

# ***NISP Daily Elliott Wave Research***

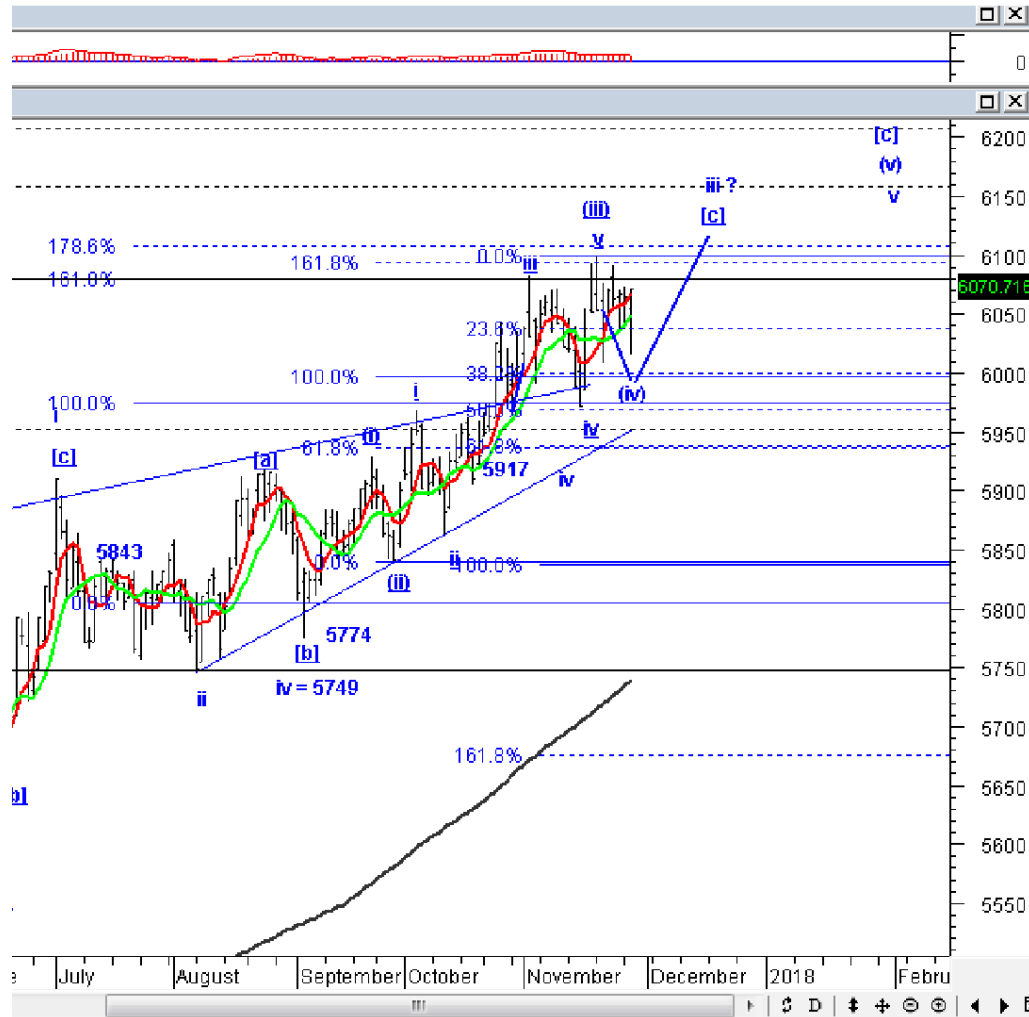
30 November 2017

# Elliottician Overview

- Jakarta Composite Index *Elliott Wave Perspective*
  - *Short Term View (1-2 days): Bearish*
- *Stocks Recommendation for Today*
  - **ACES**; *Trading Buy - Buy area 1140-1160; TP 1300; SL break 1060*
  - **AKRA**; *Trading Buy - Buy area 6400-6450; TP 6850; SL break 6300*
  - **BSDE**; *Buy on Weakness - Buy area 1600-1610; TP 1700; SL break 1550*
  - **PTBA**; *Sell on Strength - Sell area 11500-11550; Downside target 10150, 9250*
  - **GGRM**; *Trading Sell - Sell area 79700-80500; Downside target 75000, 71400*

# Jakarta Composite Index

## Elliott Wave Perspective



IHSG berpotensi mengalami koreksi minor, setidaknya hingga level 6038. Jika koreksi berlanjut hingga menembus level 6016 ke bawah, maka IHSG akan menguji *support* kuat di level 6000 yang sekaligus menjadi *bottom* ideal wave (iv). Selama IHSG belum berhasil naik menembus 6074, maka IHSG masih berada pada skenario *bearish* jangka pendek.

Support : 6000, 5969

Resisten : 6100, 6130

# Stock Recommendation for Today

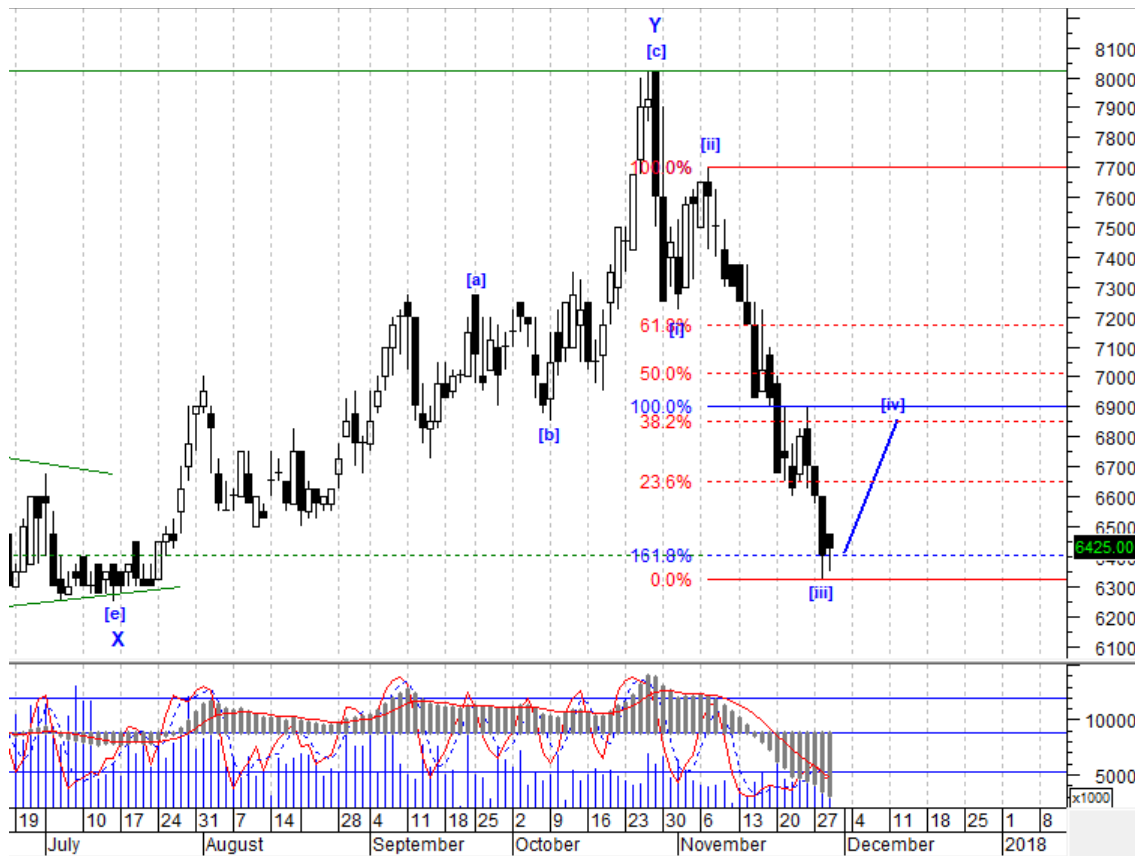
**ACES:** Trading Buy - Buy area 1140-1160; TP 1300; SL break 1060



ACES mulai naik membentuk wave (i) dari wave [iii] menuju level 1300. Silakan ambil posisi di sekitar 1140-1160.

# Stock Recommendation for Today

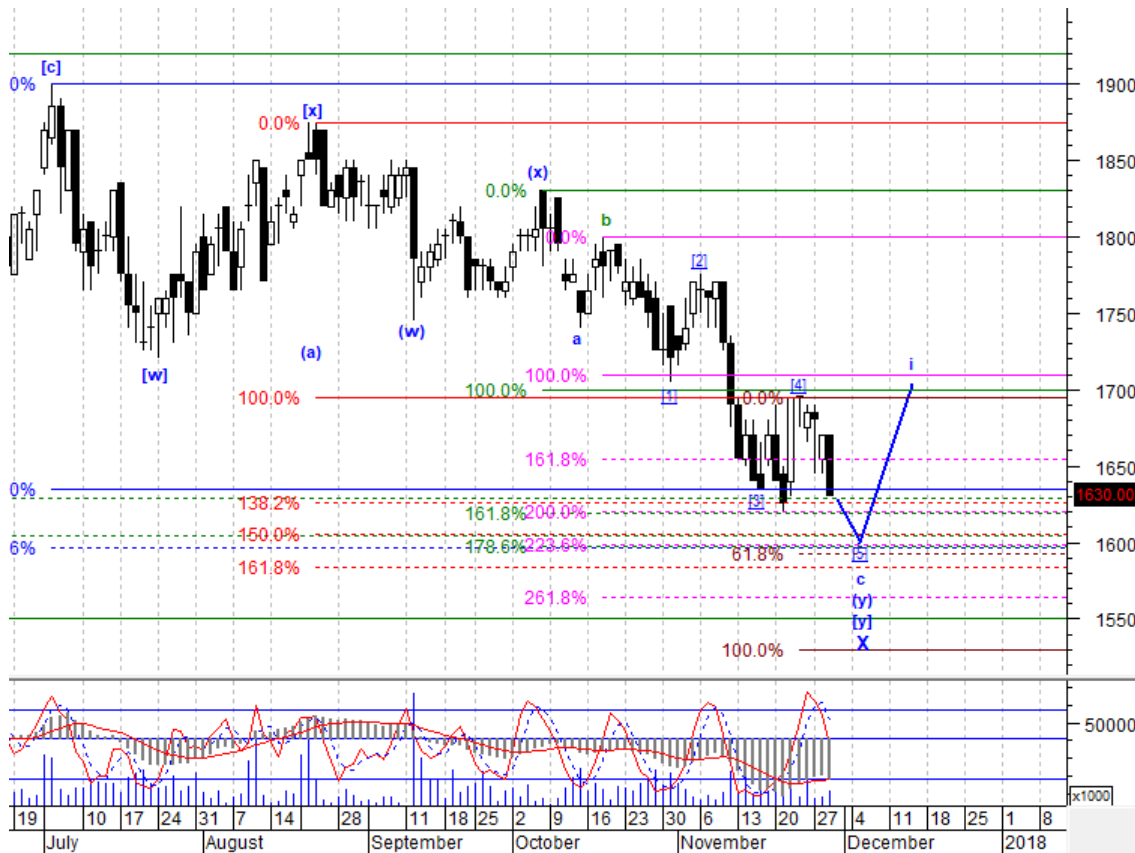
**AKRA:** Trading Buy – Buy area 6400-6450; TP 6850; SL break 6300



AKRA bakal naik membentuk wave [iv] menuju 6850. Manfaatkan momentum *rebound* ini dengan mengambil posisi di sekitar 6400-6450. Kurangi posisi jika AKRA malah ditutup di bawah 6300.

# Stock Recommendation for Today

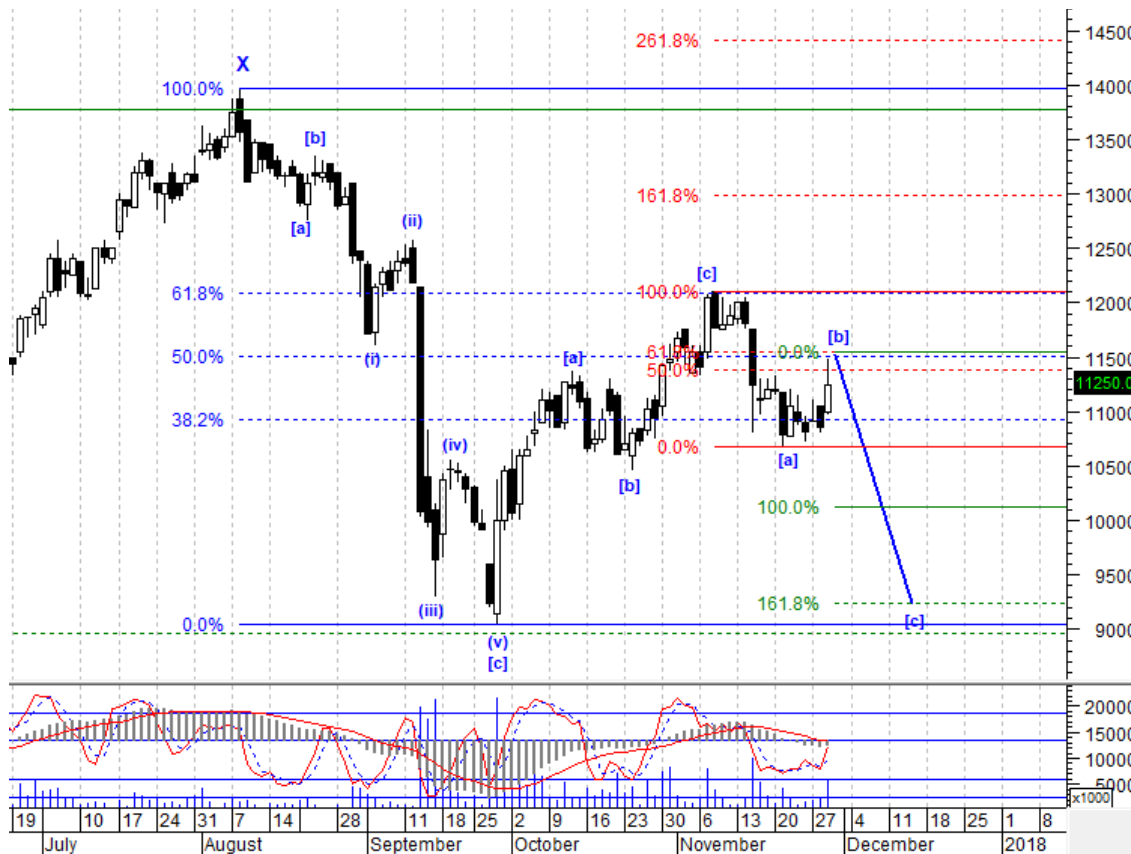
**BSDE:** *Buy on Weakness - Buy area 1600-1610; TP 1700; SL break 1550*



BSDE akan segera mengakhiri wave c di sekitar 1600-1610, lalu *rebound*. Gunakan momentum ini untuk akumulasi di area tersebut. Target kenaikannya mencapai level 1700.

# Stock Recommendation for Today

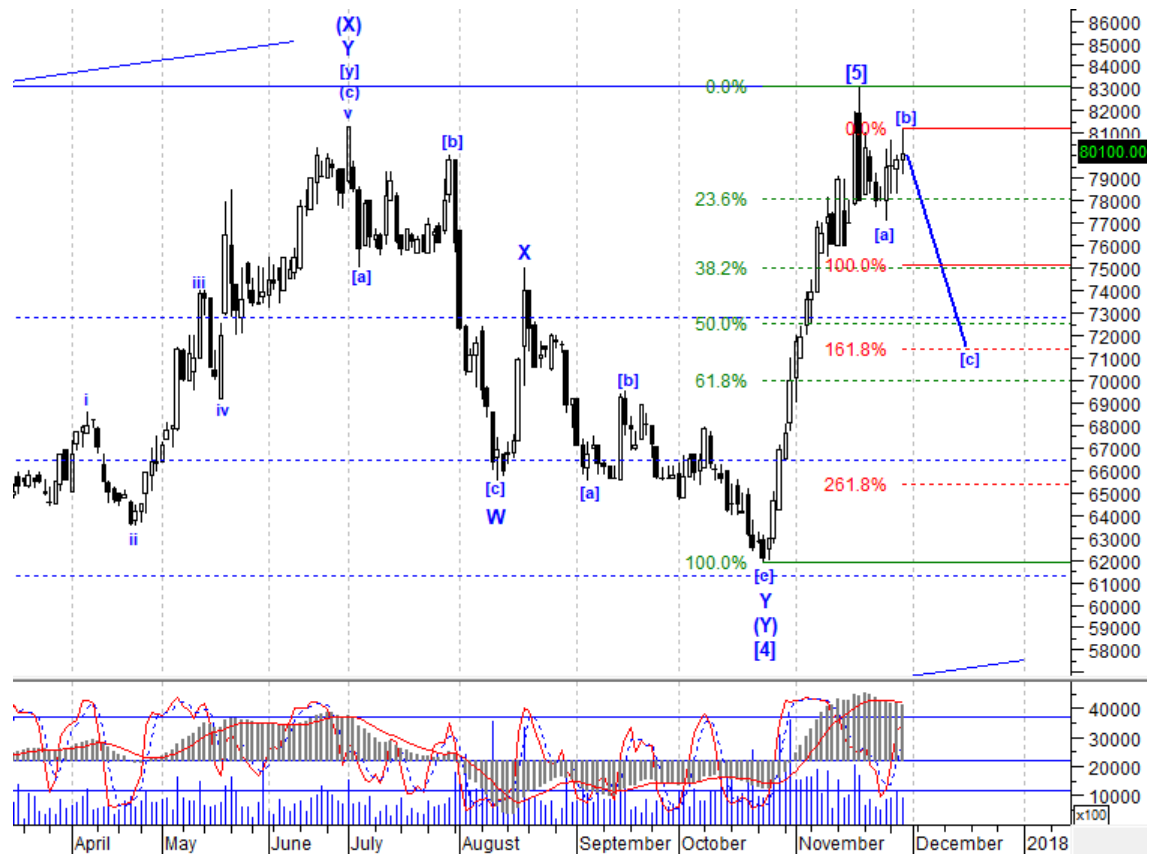
**PTBA:** *Sell on Strength - Sell area 11500-11550; Downside target 10150, 9250*



PTBA sudah berada di akhir wave [b] dengan estimasi puncak di sekitar 11500-11550. Setelah itu, wave [c] turun akan dimulai menuju 10150 atau bahkan 9250. Buang saham ini di area puncak tersebut.

# Stock Recommendation for Today

**GGRM:** *Trading Sell - Sell area 79700-80500; Downside target 75000, 71400*



GGRM akan segera turun untuk memulai wave [c] menuju target idealnya di 71400 atau target terdekatnya di 75000. Sebaiknya segera kurangi porsi GGRM di sekitar 79700-80500.



**PT NISP Sekuritas**  
**OCBC NISP Tower Lt. 21 (Head Office)**

Jl. Prof. Dr. Satrio Kav. 25  
Jakarta 12940 Indonesia  
Phone. (021) 2935 2788 (hunting)  
Fax. (021) 5794 4095  
Email: [info@nispsekuritas.com](mailto:info@nispsekuritas.com)  
Website: [www.nispsekuritas.com](http://www.nispsekuritas.com)

Branches	Address	Phone:	Fax:
Pluit Jakarta	Ruko Sentra Bisnis Blok C28 Jl. Pluit Sakti Raya No. 15 Jakarta Utara 14450	(021) 6667 5050 (hunting)	(021) 6667 5051

**Rating Definitions**

- Buy on Weakness (BoW) : We expect this stock could be bought below the last price.  
Trading Buy : We expect this stock could be bought at the last price.  
Sell on Strength (SoS) : We expect this stock could be sold above the last price.  
Trading Sell : We expect this stock could be sold at the last price.

**DISCLAIMER**

This report was produced by PT NISP Sekuritas, a member of the Indonesia Stock Exchange (IDX). The Information contained in this report has been obtained from public sources believed to be reliable and the options, analysis, forecasts, projections and expectations contained in this report are based on such information and are expressions of belief only. No representation or warranty, express or implied, is made that such information or opinion is accurate, complete or verified and it should not be relied upon as such. This report is provided solely for the information of clients of PT NISP Sekuritas who has to make their own investment decisions without reliance on this report. Neither PT NISP Sekuritas nor any officer or employee of PT NISP Sekuritas accept any liability whatsoever for any direct or consequential loss arising from any use of this report or its contents. PT NISP Sekuritas may be involved in transactions contrary to any opinions herein to make markets, or have positions in the securities recommended herein. PT NISP Sekuritas may seek or will seek investment banking or other business relationships with the companies within this report. This report is a copyright of PT NISP Sekuritas. For further information please contact our number 62-21-29352788 or fax 62-21-57944095.