

# ***NISP Daily Elliott Wave Research***

29 November 2017

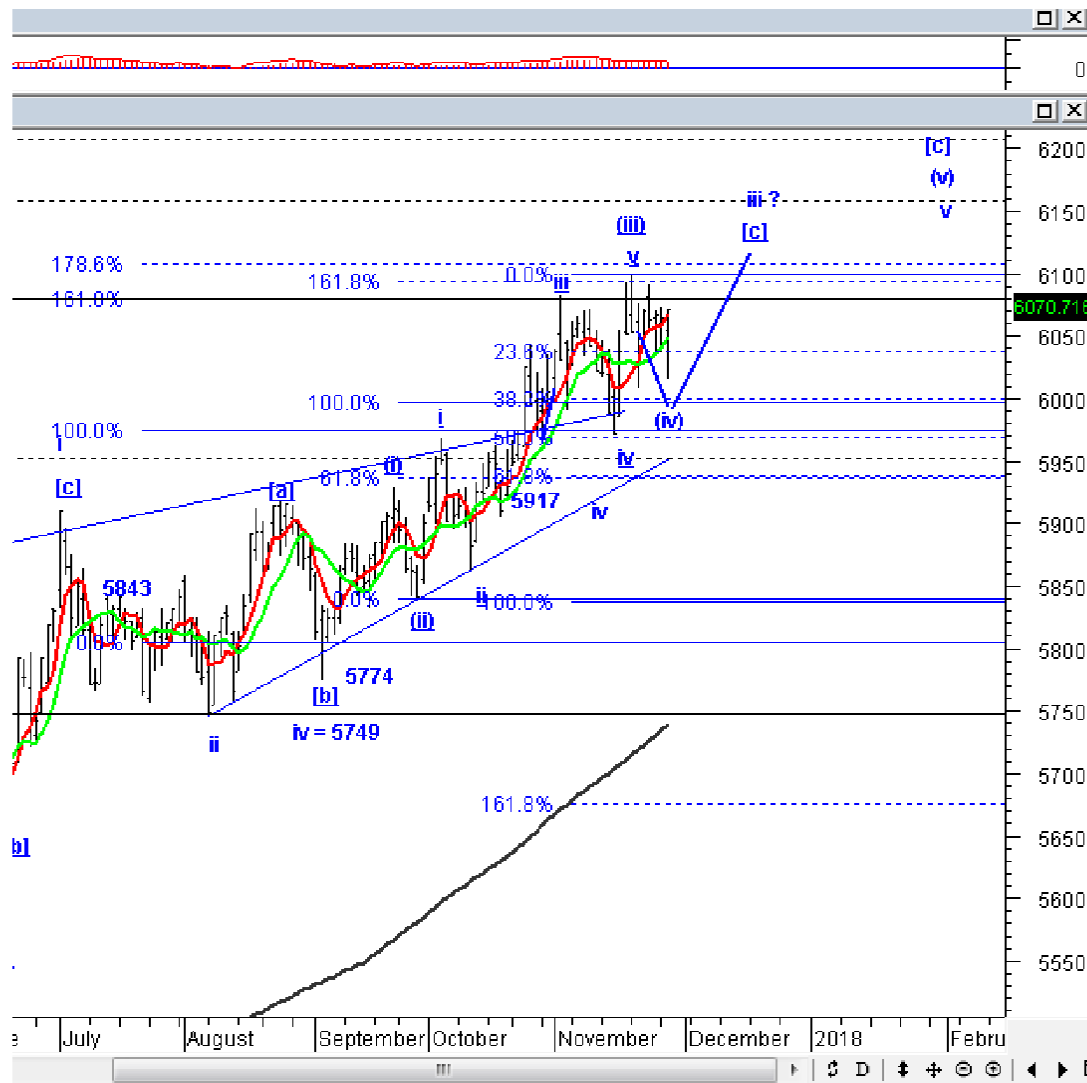


# Elliottician Overview

- Jakarta Composite Index *Elliott Wave Perspective*
  - *Short Term View (1-2 days): Bullish*
- *Stocks Recommendation for Today*
  - **MNCN**; *Buy on weakness – Buy area 1280-1320; TP 1500, 1700; SL break 1200*
  - **MBSS**; *Buy on weakness – Buy area 600-625; TP 660, 750, 900; SL break 545*
  - **INTP**; *Buy on weakness – Buy area 19000-19200; TP 20500, 21700; SL break 18350*
  - **MEDC**; *Add position – Buy area 955-965; TP 1000, 1050; SL break 885*
  - **HMSP**; *Take profit – Sell area 4400-4450; Target koreksi 4200, 4000*

# Jakarta Composite Index

## Elliott Wave Perspective



Selamat pagi, dengan menguatnya IHSG kemarin di akhir sesi 2, seharusnya pagi ini IHSG juga masih dapat menguat, terutama disebabkan oleh sentimen positif dari indeks US yang memang semalam menghijau. Meskipun begitu, ada beberapa resisten minor yang perlu diwaspadai dan berpotensi untuk menghalangi kenaikan IHSG hari ini, yaitu level 6100 dan 6130.

Support : 5940-5960, 5890-5910  
Resisten : 6100, 6130

# Stock Recommendation for Today

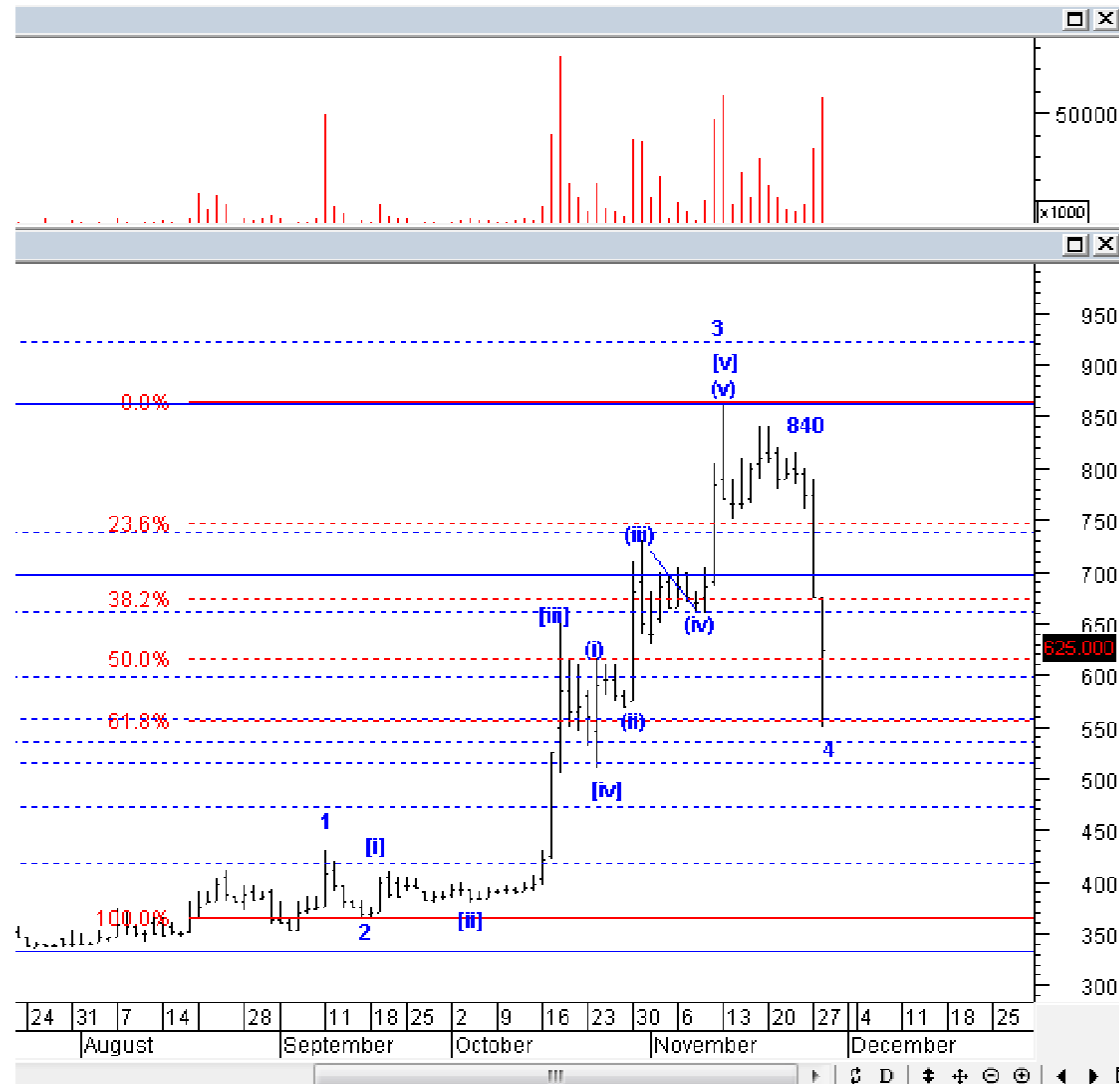
**MNCN:** Buy on weakness – Buy area 1280-1320; TP 1500, 1700; SL break 1200



MNCN kemarin memang terkoreksi dengan volume besar, tetapi besar peluangnya bahwa koreksi MNC sudah terbatas. Silakan mulai akumulasi beli MNCN, dengan catatan, hanya jika MNCN turun ke bawah 1320. Posisi MNCN saat ini sedang berada di wave [ii] dengan skenario alternatif wave 5.

# Stock Recommendation for Today

**MBSS;** *Buy on weakness – Buy area 600-625; TP 660, 750, 900; SL break 545*



MBSS harusnya saat ini sedang berada di akhir *wave* 4, artinya MBSS masih dapat menguat ke atas 865 lagi. Silakan BoW MBSS.

# Stock Recommendation for Today

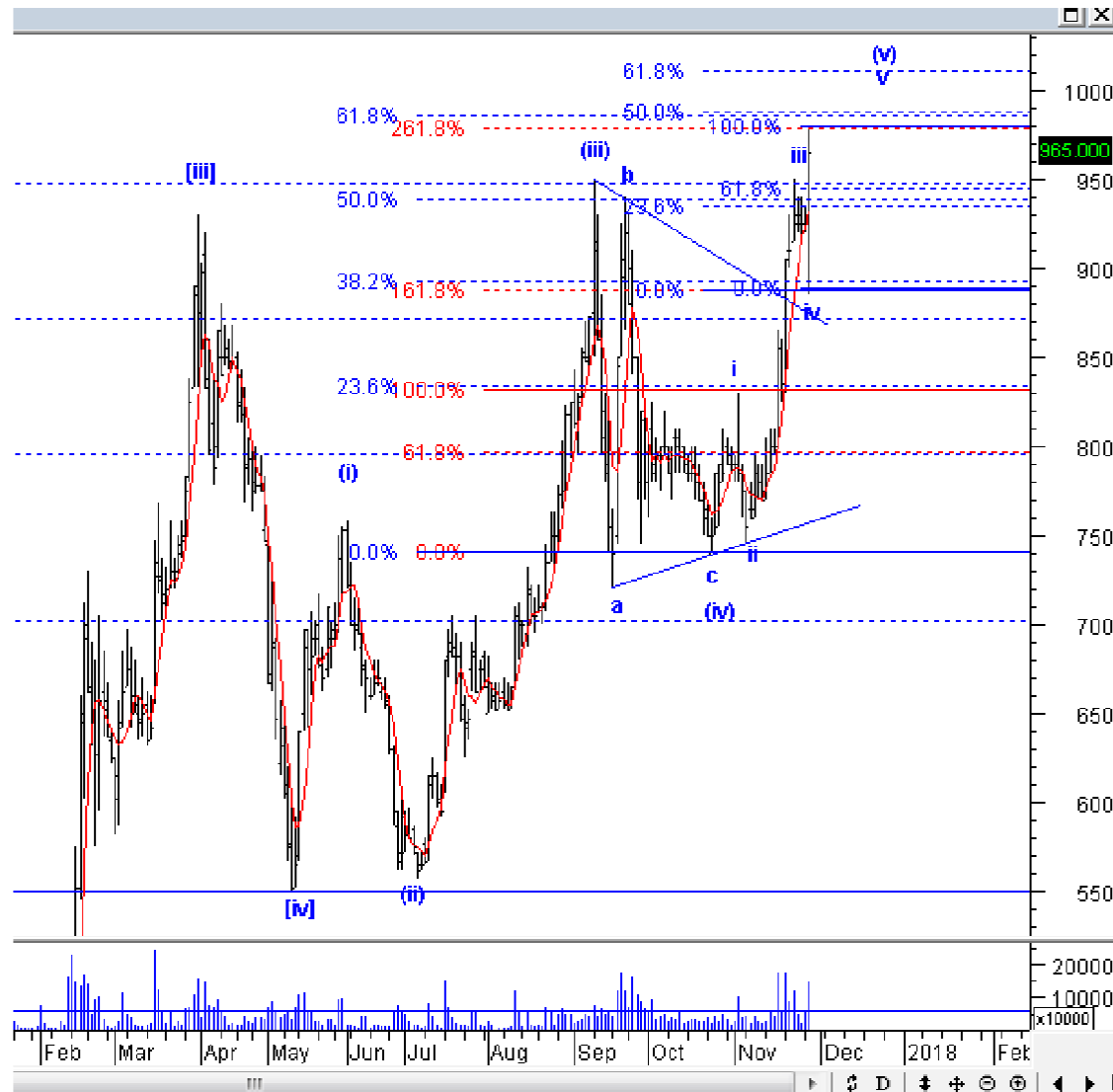
**INTP**; Buy on weakness – Buy area 19000-19200; TP 20500, 21700; SL break 18350



INTP kemarin menguat dengan volume besar, yang mana ini mengkonfirmasi bahwa INTP selesai membentuk wave [a], dan akan segera menyelesaikan target minimal wave [b] di level 20500. Silakan menambah posisi pada INTP.

# Stock Recommendation for Today

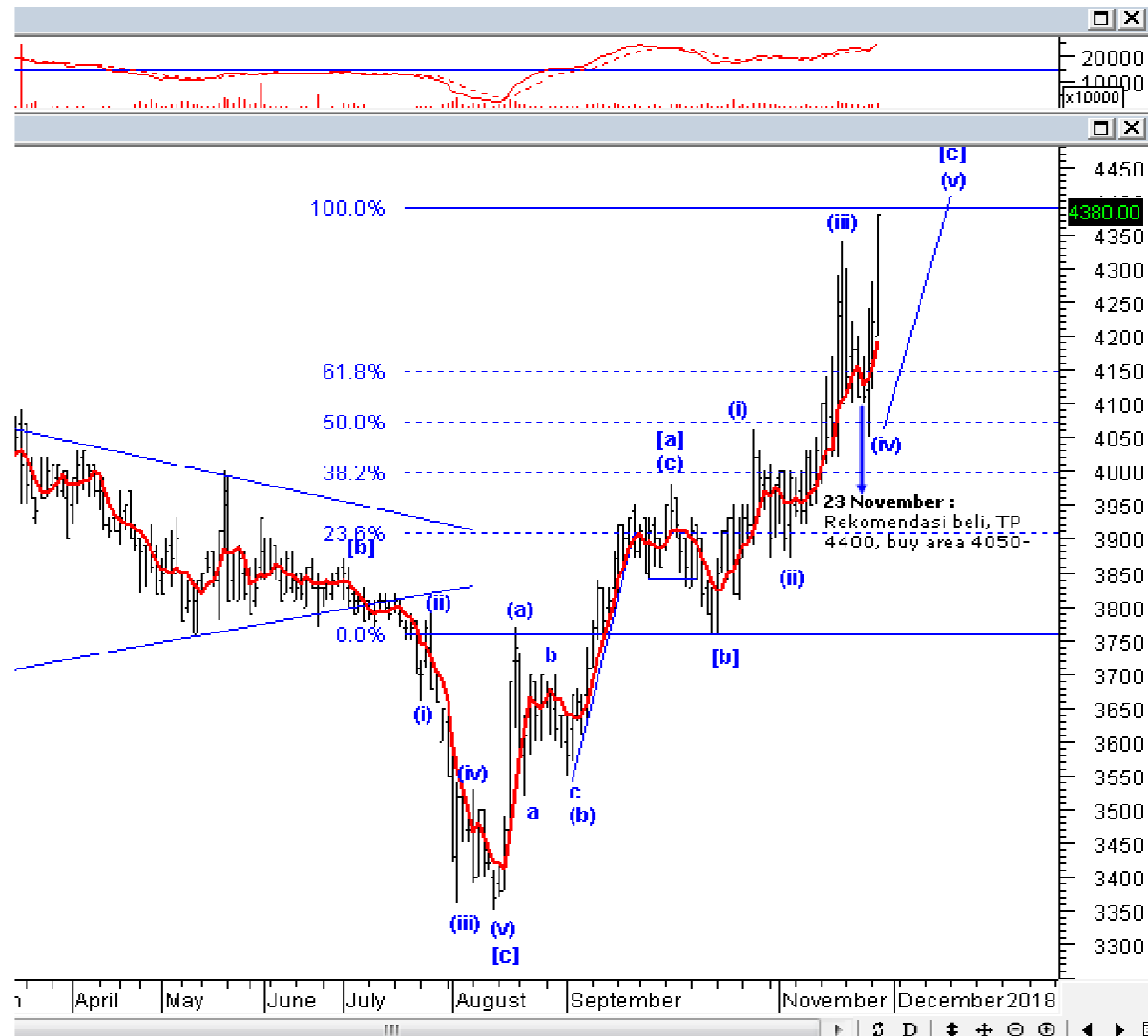
**MEDC:** Add position – Buy area 955-965; TP 1000, 1050; SL break 885



MEDC kemarin menguat dengan volume besar, serta *breakout*, ini mengkonfirmasi bahwa MEDC sudah berada di *wave v* dari *wave (v)*. Silakan menambah posisi pada MEDC, dan menggeser posisi *stoploss* di level 885.

# Stock Recommendation for Today

**HMSP;** *Take profit – Sell area 4400-4450; Target koreksi 4200, 4000*



HMSP kemarin menguat dengan volume besar, dan hampir mencapai target minimal kami di 4400. Sebagai catatan, HMSP pernah kami rekomendasikan beli di tanggal 23 November, dan area beli sudah tercapai di tanggal 24 November. Oleh karena itu, pagi ini kami rekomendasikan untuk mulai *profit taking* secara bertahap pada HMSP, terutama jika HMSP naik ke atas 4400.



**PT NISP Sekuritas**  
**OCBC NISP Tower Lt. 21 (Head Office)**  
Jl. Prof. Dr. Satrio Kav. 25  
Jakarta 12940 Indonesia  
Phone. (021) 2935 2788 (hunting)  
Fax. (021) 5794 4095  
Email: [info@nispsekuritas.com](mailto:info@nispsekuritas.com)  
Website: [www.nispsekuritas.com](http://www.nispsekuritas.com)

<b>Branches</b>	<b>Address</b>	<b>Phone:</b>	<b>Fax:</b>
<b>Pluit Jakarta</b>	Ruko Sentra Bisnis Blok C28 Jl. Pluit Sakti Raya No. 15 Jakarta Utara 14450	(021) 6667 5050 (hunting)	(021) 6667 5051

### **Rating Definitions**

Buy on Weakness (BoW) : We expect this stock could be bought below the last price.  
Trading Buy : We expect this stock could be bought at the last price.  
Sell on Strength (SoS) : We expect this stock could be sold above the last price.  
Trading Sell : We expect this stock could be sold at the last price.

### **DISCLAIMER**

This report was produced by PT NISP Sekuritas, a member of the Indonesia Stock Exchange (IDX). The Information contained in this report has been obtained from public sources believed to be reliable and the options, analysis, forecasts, projections and expectations contained in this report are based on such information and are expressions of belief only. No representation or warranty, express or implied, is made that such information or opinion is accurate, complete or verified and it should not be relied upon as such. This report is provided solely for the information of clients of PT NISP Sekuritas who has to make their own investment decisions without reliance on this report. Neither PT NISP Sekuritas nor any officer or employee of PT NISP Sekuritas accept any liability whatsoever for any direct or consequential loss arising from any use of this report or its contents. PT NISP Sekuritas may be involved in transactions contrary to any opinions herein to make markets, or have positions in the securities recommended herein. PT NISP Sekuritas may seek or will seek investment banking or other business relationships with the companies within this report. This report is a copyright of PT NISP Sekuritas. For further information please contact our number 62-21-29352788 or fax 62-21-57944095.