

NISP Daily Elliott Wave Research

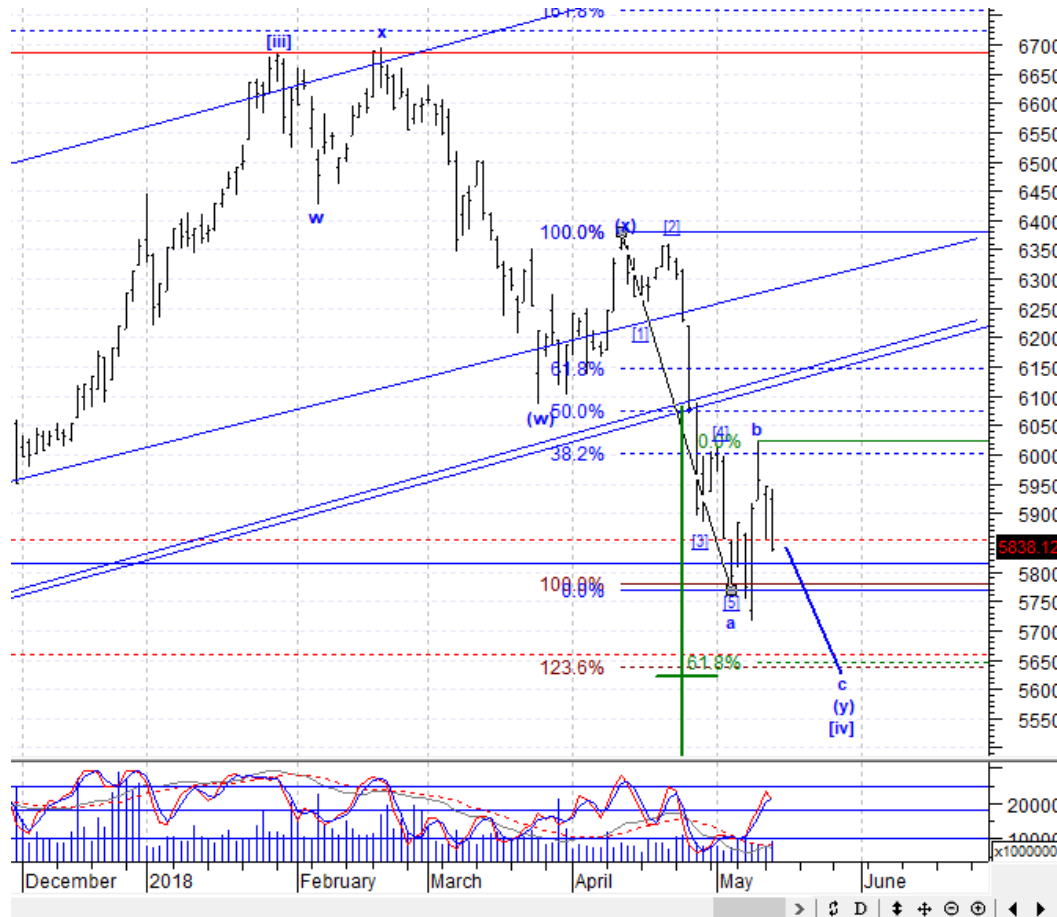
16 May 2018

Elliottician Overview

- Jakarta Composite Index *Elliott Wave Perspective*
 - *Short Term View (1-2 days): Bearish*
- *Stocks Recommendation for Today*
 - **DOID**; *Trading Buy – Buy area 855-865; TP 1000; SL break 790*
 - **SMGR**; *Trading Buy – Buy area 8850-8950; TP 9700, 10200; SL break 8600*
 - **BMRI**; *Trading Sell - Sell area 6800-6900; Downside target 6450, 6150*
 - **GGRM**; *Trading Sell - Sell area 66000-66300; Downside target 64500*
 - **WSBP**; *Trading Sell - Sell area 370-374; Downside target 350, 324*

Jakarta Composite Index

Elliott Wave Perspective

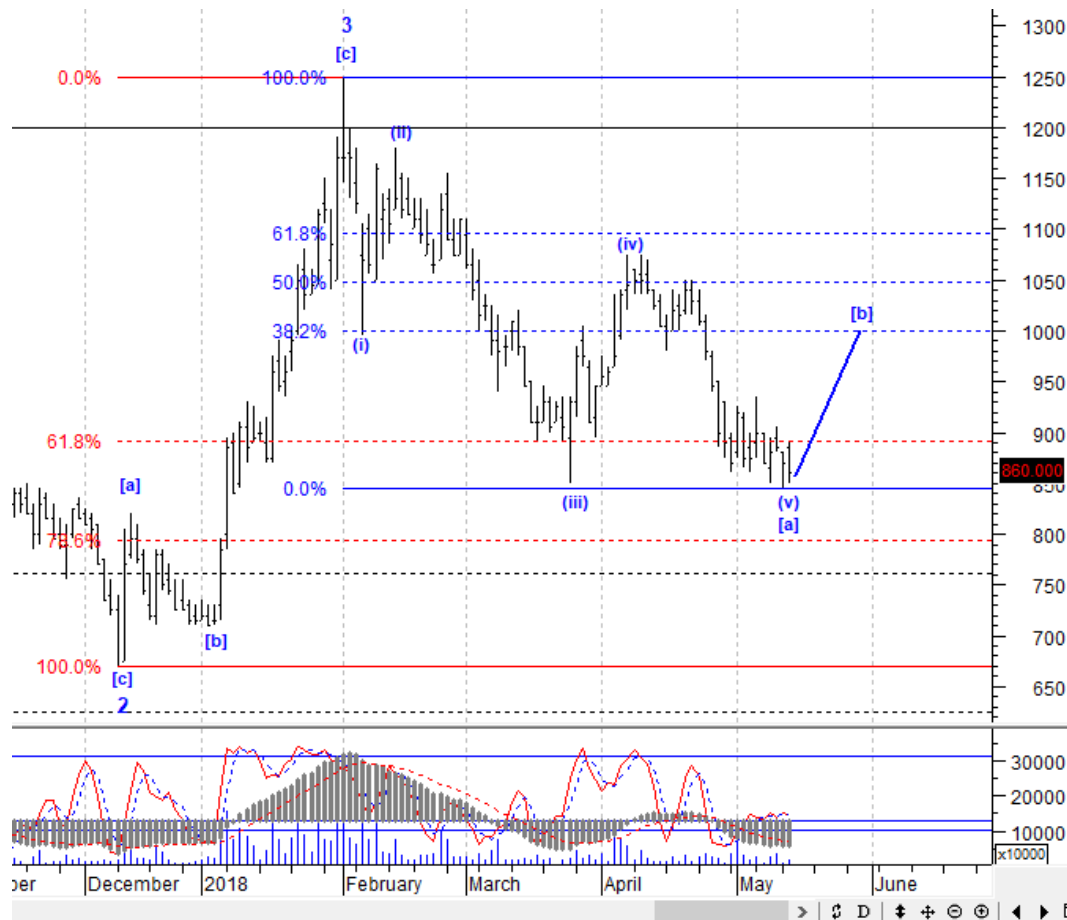


Tampaknya hari ini IHSG akan melanjutkan pelemahan wave c dari wave (y) dari wave [iv] menuju area 5640-5660. Kalaupun IHSG naik lagi, kenaikannya akan terbatas hingga level 6075, lalu turun lagi.

Support : 5640, 5715
Resisten : 6000, 6075

Stock Recommendation for Today

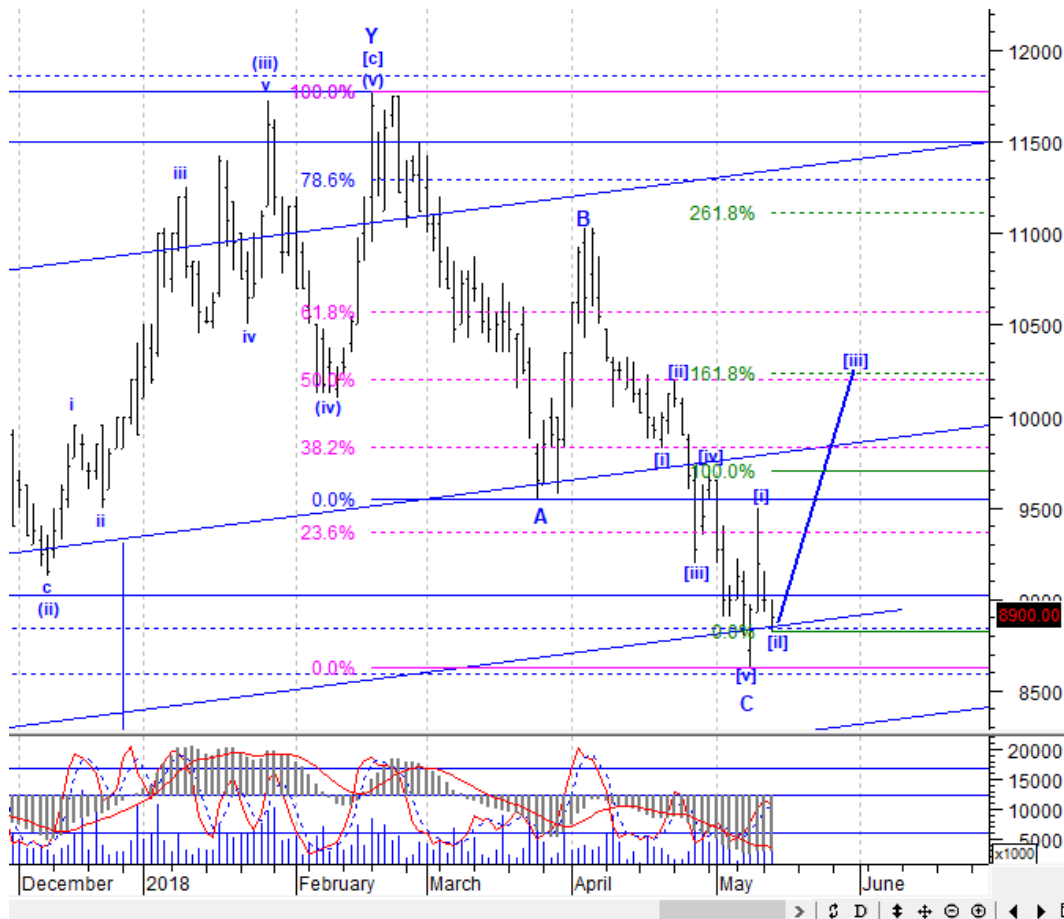
DOID: Trading Buy – Buy area 855-865; TP 1000; SL break 790



Tampaknya DOID sudah menyelesaikan wave (v) dari wave [a] sehingga akan naik memulai wave [b] menuju level 1000. Silakan ambil posisi di sekitar 855-865.

Stock Recommendation for Today

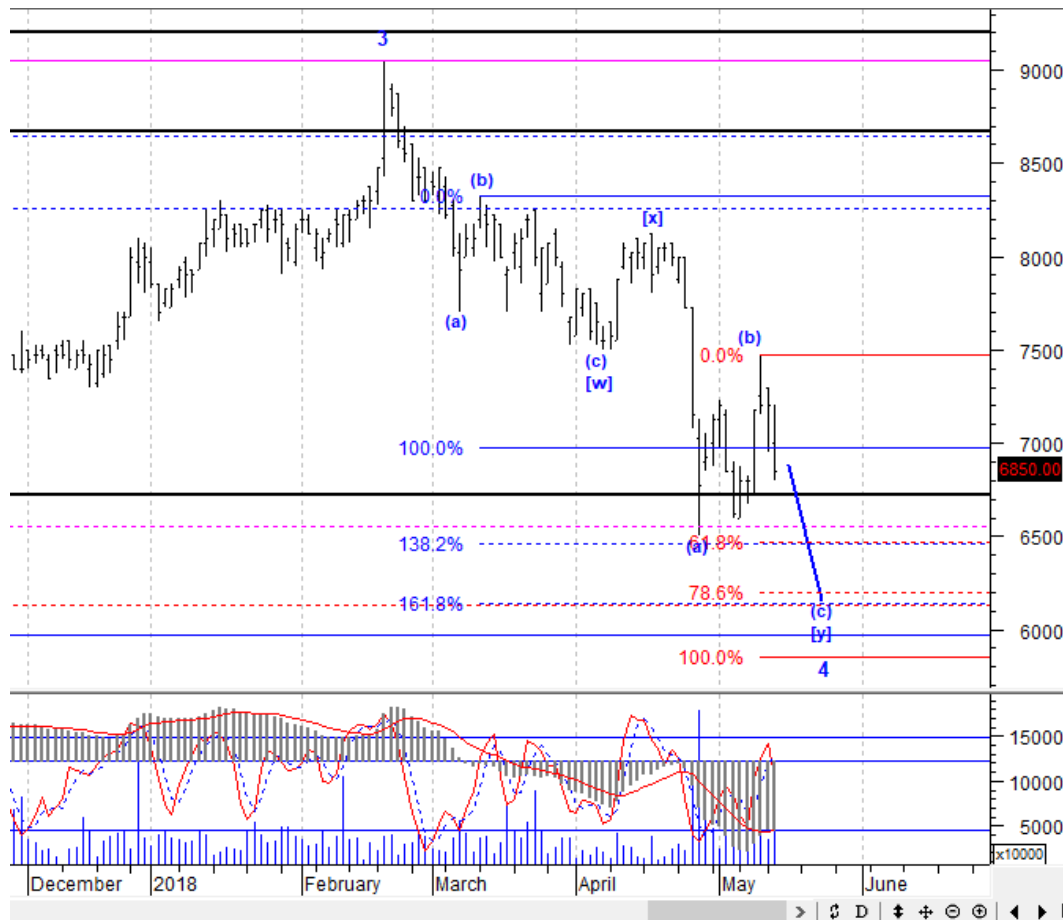
SMGR: Trading Buy – Buy area 8850-8950; TP 9700, 10200; SL break 8600



SMGR berpeluang naik melanjutkan wave [iii] menuju target terdekatnya di level 9700 dan target idealnya di level 10200. Silakan akumulasi di sekitar 8850-8950.

Stock Recommendation for Today

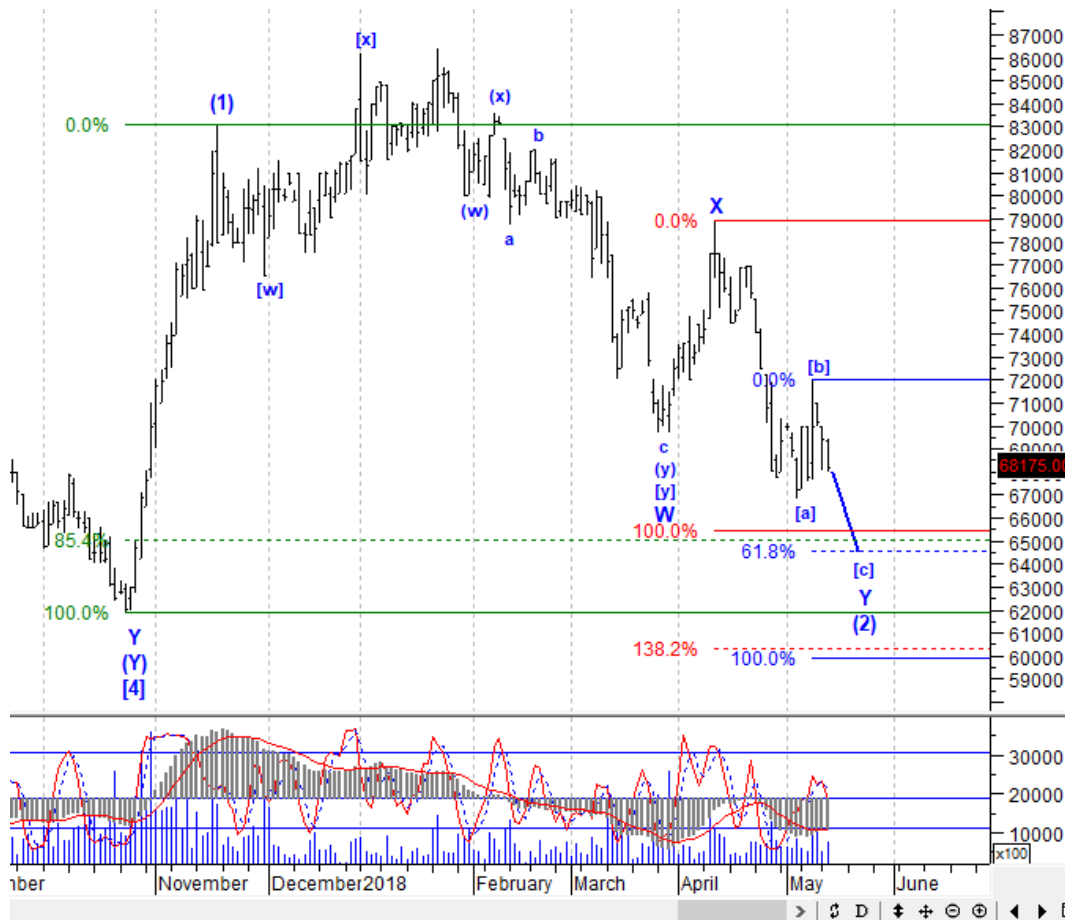
BMRI: *Trading Sell - Sell area 6800-6900; Downside target 6450, 6150*



BMRI masih berpeluang turun until menyelesaikan wave (c) dari wave [y] menuju level 6450 atau bahkan level 6150. Silakan pasang antrian jual di sekitar 6800-6900.

Stock Recommendation for Today

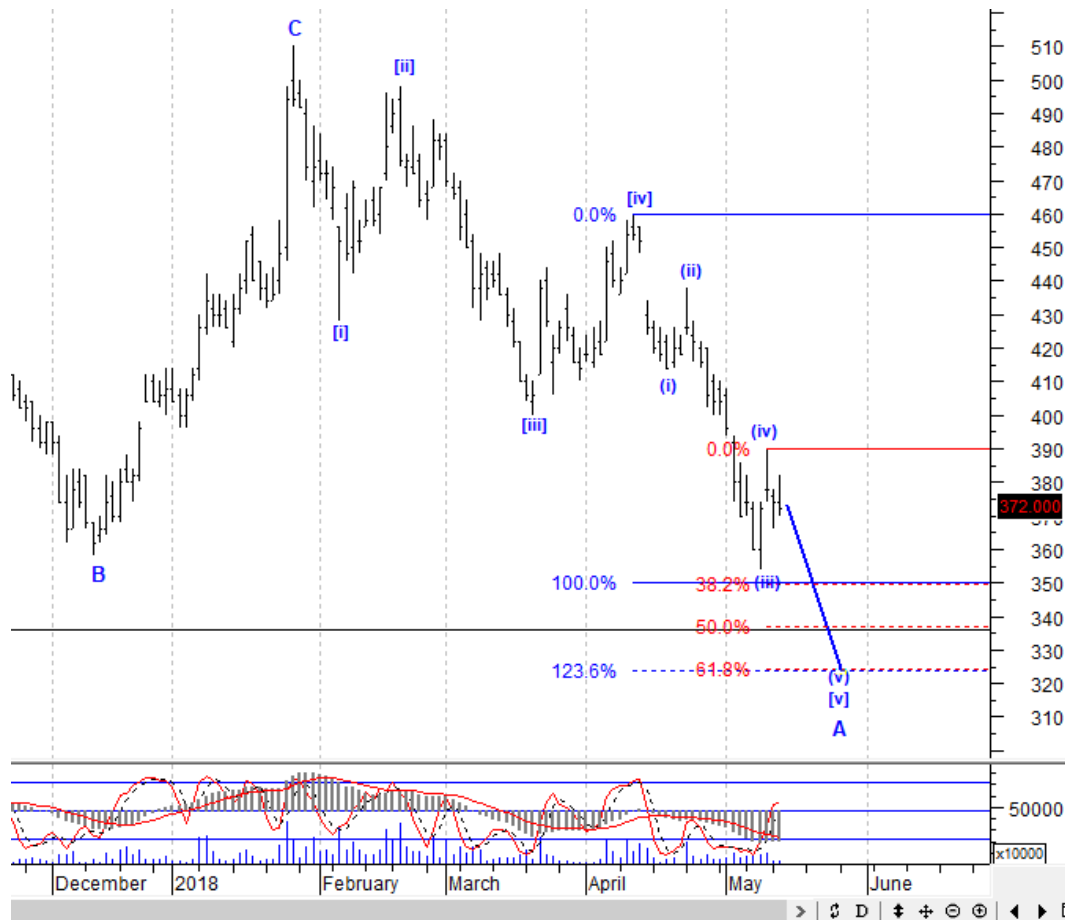
GGRM: *Trading Sell - Sell area 66000-66300; Downside target 64500*



GGRM masih berpeluang turun hingga level 64500 untuk menyelesaikan wave [c] dari wave Y. Karena itu, sebaiknya kurangi posisi dulu di sekitar 66000-66300.

Stock Recommendation for Today

WSBP: *Trading Sell - Sell area 370-374; Downside target 350, 324*



WSBP sedang berada di awal pelemahan wave (v) dari wave [v] yang berpotensi menuju level 350 atau idealnya level 324. Karena itu, segera kosongkan posisi di sekitar 370-374.

PT NISP Sekuritas
OCBC NISP Tower Lt. 21 (Head Office)

Jl. Prof. Dr. Satrio Kav. 25
Jakarta 12940 Indonesia
Phone. (021) 2935 2788 (hunting)
Fax. (021) 5794 4095
Email: info@nispsekuritas.com
Website: www.nispsekuritas.com

Branches	Address	Phone:	Fax:
Pluit Jakarta	Ruko Sentra Bisnis Blok C28 Jl. Pluit Sakti Raya No. 15 Jakarta Utara 14450	(021) 6667 5050 (hunting)	(021) 6667 5051

Rating Definitions

- Buy on Weakness (BoW) : We expect this stock could be bought below the last price.
Trading Buy : We expect this stock could be bought at the last price.
Sell on Strength (SoS) : We expect this stock could be sold above the last price.
Trading Sell : We expect this stock could be sold at the last price.

DISCLAIMER

This report was produced by PT NISP Sekuritas, a member of the Indonesia Stock Exchange (IDX). The Information contained in this report has been obtained from public sources believed to be reliable and the options, analysis, forecasts, projections and expectations contained in this report are based on such information and are expressions of belief only. No representation or warranty, express or implied, is made that such information or opinion is accurate, complete or verified and it should not be relied upon as such. This report is provided solely for the information of clients of PT NISP Sekuritas who has to make their own investment decisions without reliance on this report. Neither PT NISP Sekuritas nor any officer or employee of PT NISP Sekuritas accept any liability whatsoever for any direct or consequential loss arising from any use of this report or its contents. PT NISP Sekuritas may be involved in transactions contrary to any opinions herein to make markets, or have positions in the securities recommended herein. PT NISP Sekuritas may seek or will seek investment banking or other business relationships with the companies within this report. This report is a copyright of PT NISP Sekuritas. For further information please contact our number 62-21-

29352788 or fax 62-21-57944095.