

NISP Daily Elliott Wave Research

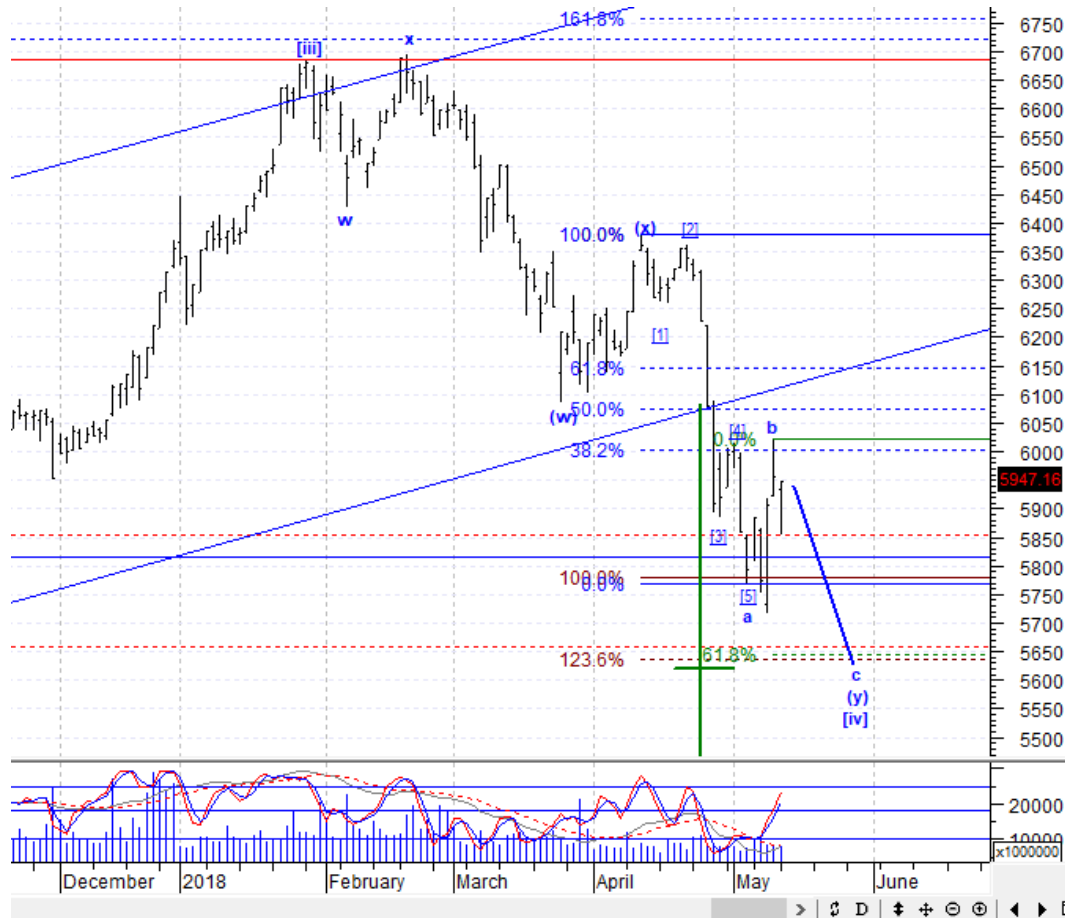
15 May 2018

Elliottician Overview

- Jakarta Composite Index *Elliott Wave Perspective*
 - *Short Term View (1-2 days): Bearish*
- *Stocks Recommendation for Today*
 - **KLBF**; *Trading Buy – Buy area 1440-1450; TP 1615, 1750; SL break 1390*
 - **LSIP**; *Trading Buy – Buy area 1100-1120; TP 1210; SL break 1070*
 - **TLKM**; *Trading Buy – Buy area 3500-3540; TP 3810, 4010; SL break 3400*
 - **BBNI**; *Trading Sell - Sell area 8150-8250; Downside target 6850, 6700*
 - **UNTR**; *Trading Sell - Sell area 35700-35900; Downside target 29900, 29300*

Jakarta Composite Index

Elliott Wave Perspective

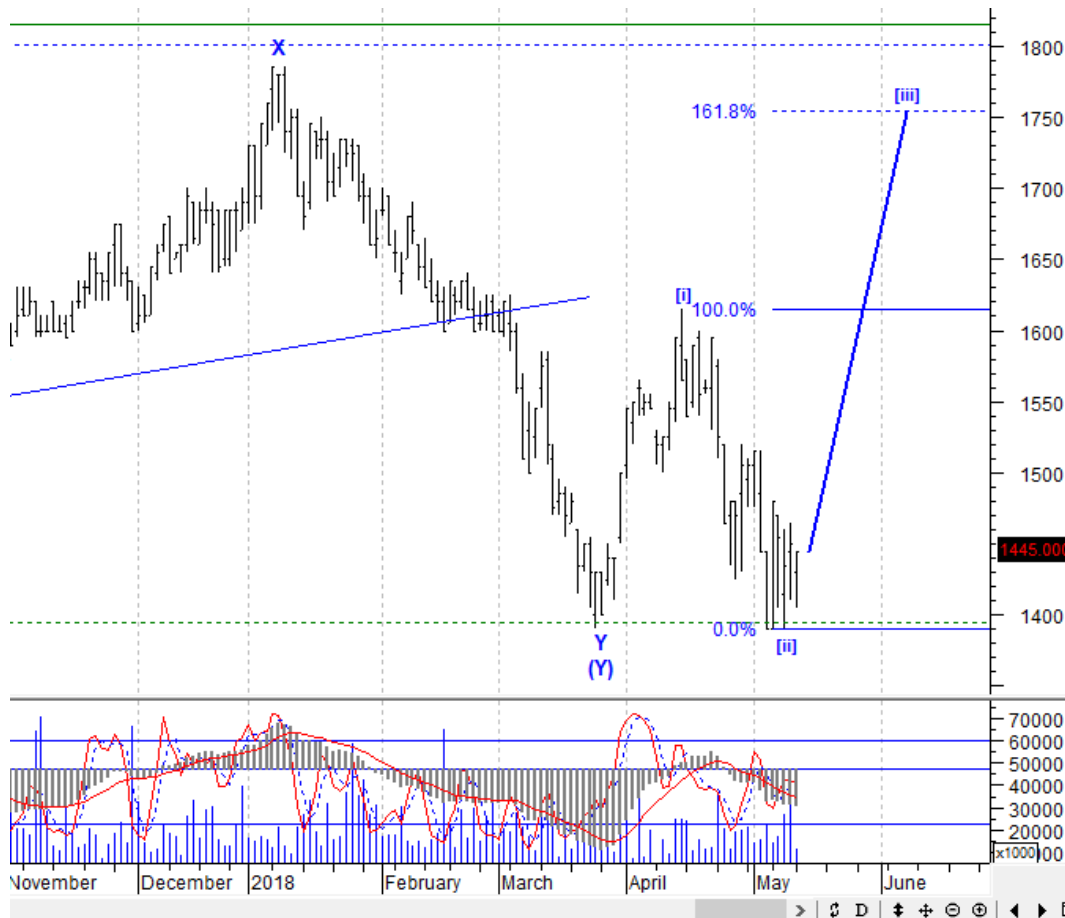


Hari ini IHSG masih berpeluang turun untuk melanjutkan wave c dari wave (y) dari wave [iv] menuju area 5640-5660. Kalaupun IHSG naik lagi, kenaikannya akan terbatas hingga level 6075, lalu turun lagi.

Support : 5640, 5715
Resisten : 6000, 6075

Stock Recommendation for Today

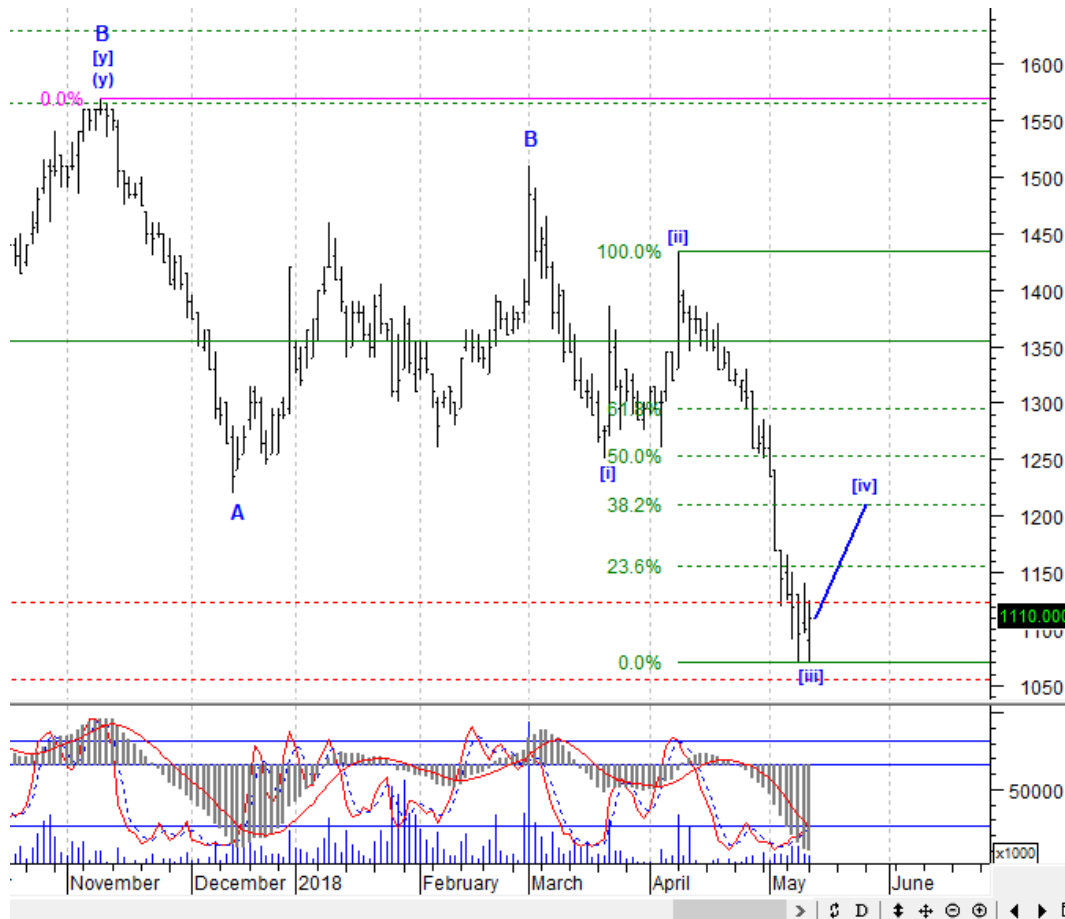
KLBF: *Trading Buy – Buy area 1440-1450; TP 1615, 1750; SL break 1390*



KLBF sudah berada di awal wave [iii] dengan target kenaikan terdekat di level 1615 dan idealnya di level 1750. Silakan pasang antrian beli di sekitar 1440-1450.

Stock Recommendation for Today

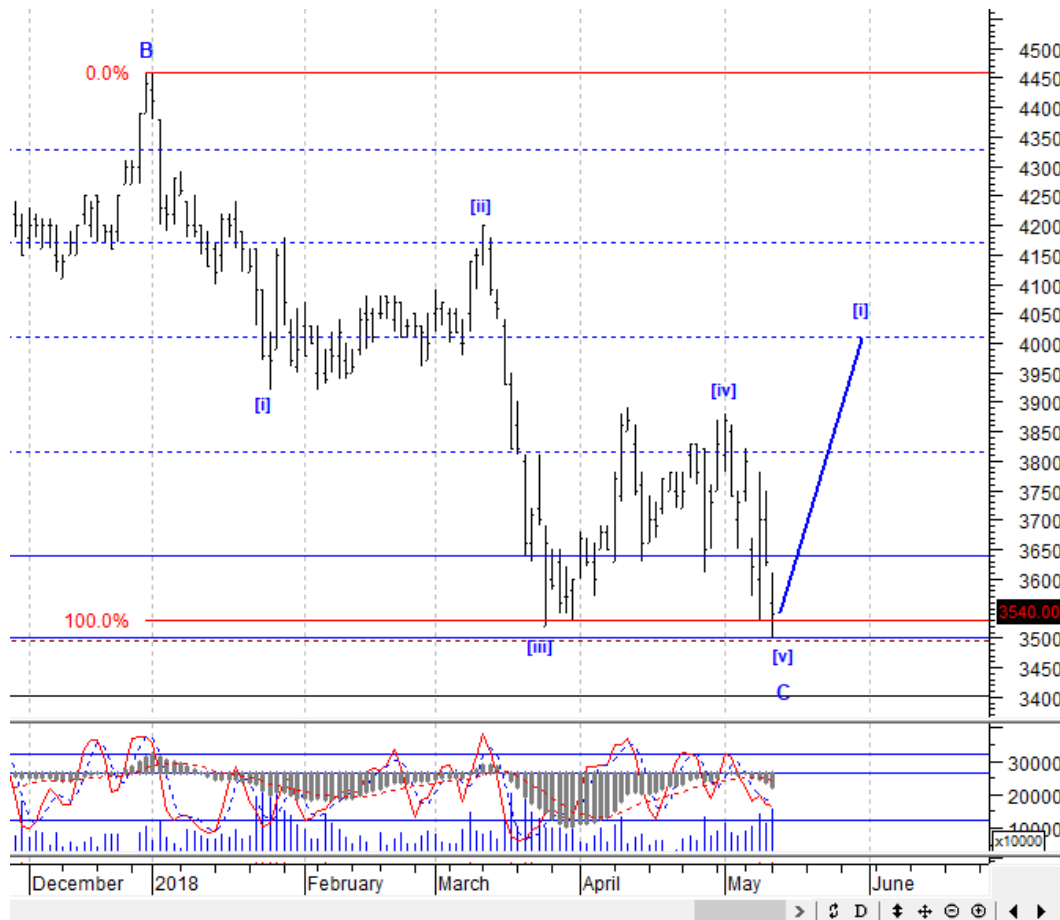
LSIP: Trading Buy – Buy area 1100-1120; TP 1210; SL break 1070



LSIP berpotensi naik membentuk wave [iv] menuju level 1210. Karena itu, Anda bisa mengambil posisi di sekitar 1100-1120. Kurangi posisi ketika LSIP malah turun menembus level 1070.

Stock Recommendation for Today

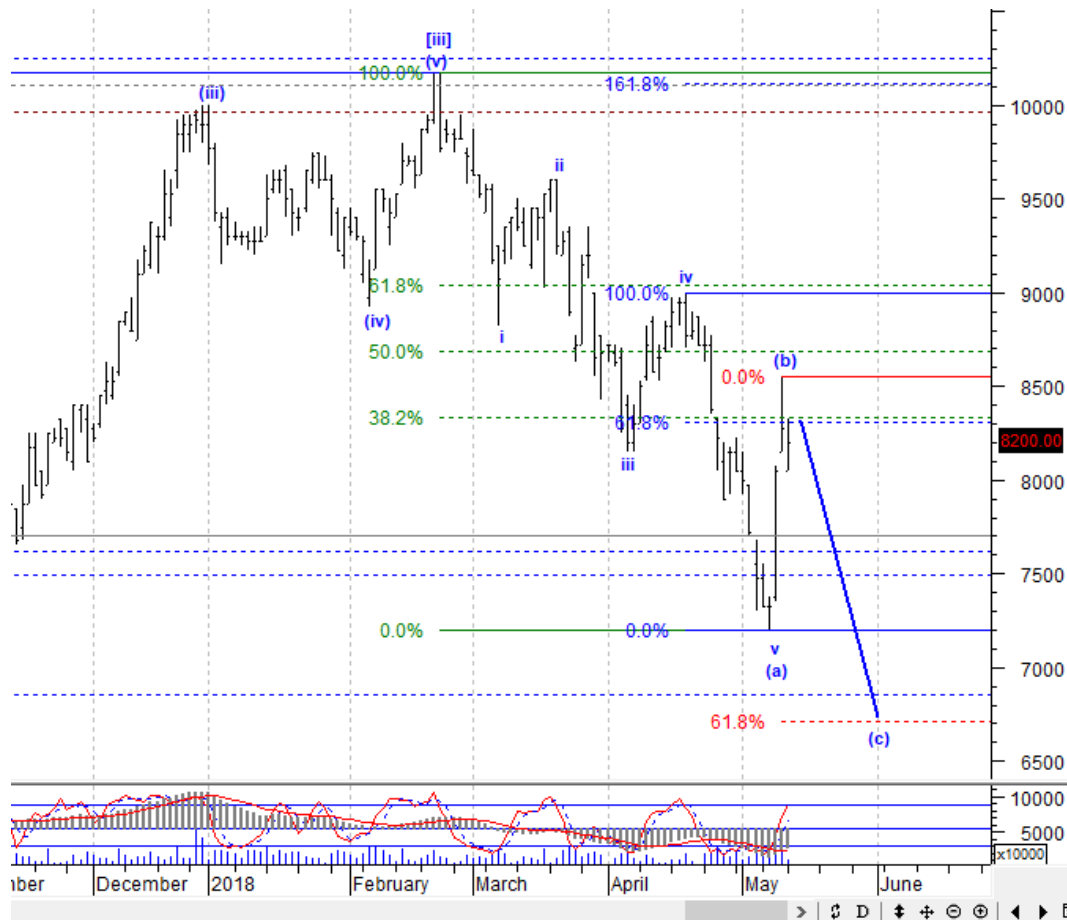
TLKM: *Trading Buy – Buy area 3500-3540; TP 3810, 4010; SL break 3400*



TLKM sedang berada di akhir wave [v] dari wave C sehingga berpotensi *rebound* memulai wave [i] menuju level 3810 sebagai target terdekat dan level 4010 sebagai target idealnya. Gunakan kesempatan ini untuk akumulasi di sekitar 3500-3540.

Stock Recommendation for Today

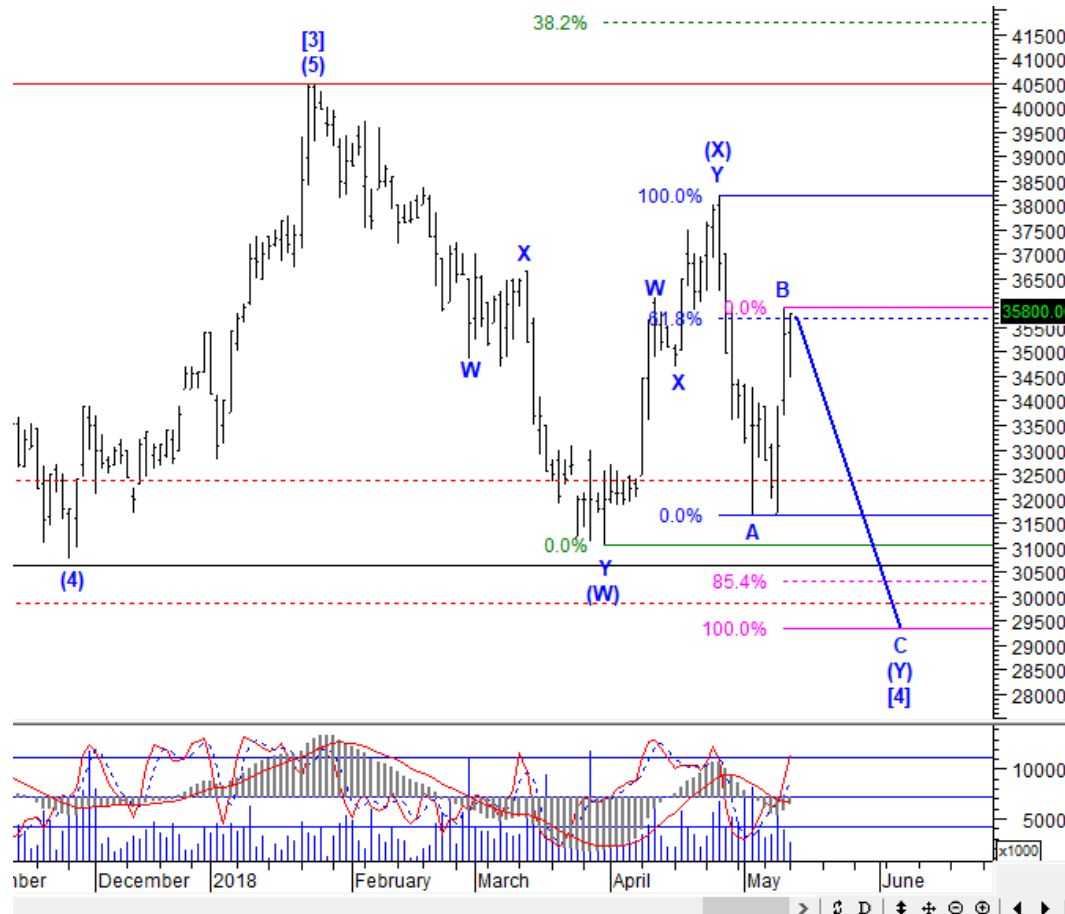
BBNI: *Trading Sell - Sell area 8150-8250; Downside target 6850, 6700*



BBNI sudah mencapai target wave (b) dan kini sedang bersiap-siap untuk memulai penurunan wave (c) menuju level 6850 atau bahkan level 6700. Silakan lepas saham ini di sekitar 8150-8250.

Stock Recommendation for Today

UNTR: *Trading Sell - Sell area 35700-35900; Downside target 29900, 29300*



UNTR sudah mencapai target ideal wave B sehingga sewaktu-waktu dapat melemah untuk memulai wave C menuju level 29900 atau bahkan level 29300. Sebaiknya Anda buang saham ini di area 35700-35900.

PT NISP Sekuritas
OCBC NISP Tower Lt. 21 (Head Office)

Jl. Prof. Dr. Satrio Kav. 25
Jakarta 12940 Indonesia
Phone. (021) 2935 2788 (hunting)
Fax. (021) 5794 4095
Email: info@nispsekuritas.com
Website: www.nispsekuritas.com

Branches	Address	Phone:	Fax:
Pluit Jakarta	Ruko Sentra Bisnis Blok C28 Jl. Pluit Sakti Raya No. 15 Jakarta Utara 14450	(021) 6667 5050 (hunting)	(021) 6667 5051

Rating Definitions

- Buy on Weakness (BoW) : We expect this stock could be bought below the last price.
Trading Buy : We expect this stock could be bought at the last price.
Sell on Strength (SoS) : We expect this stock could be sold above the last price.
Trading Sell : We expect this stock could be sold at the last price.

DISCLAIMER

This report was produced by PT NISP Sekuritas, a member of the Indonesia Stock Exchange (IDX). The Information contained in this report has been obtained from public sources believed to be reliable and the options, analysis, forecasts, projections and expectations contained in this report are based on such information and are expressions of belief only. No representation or warranty, express or implied, is made that such information or opinion is accurate, complete or verified and it should not be relied upon as such. This report is provided solely for the information of clients of PT NISP Sekuritas who has to make their own investment decisions without reliance on this report. Neither PT NISP Sekuritas nor any officer or employee of PT NISP Sekuritas accept any liability whatsoever for any direct or consequential loss arising from any use of this report or its contents. PT NISP Sekuritas may be involved in transactions contrary to any opinions herein to make markets, or have positions in the securities recommended herein. PT NISP Sekuritas may seek or will seek investment banking or other business relationships with the companies within this report. This report is a copyright of PT NISP Sekuritas. For further information please contact our number 62-21-29352788 or fax 62-21-57944095.