

# ***NISP Daily Elliott Wave Research***

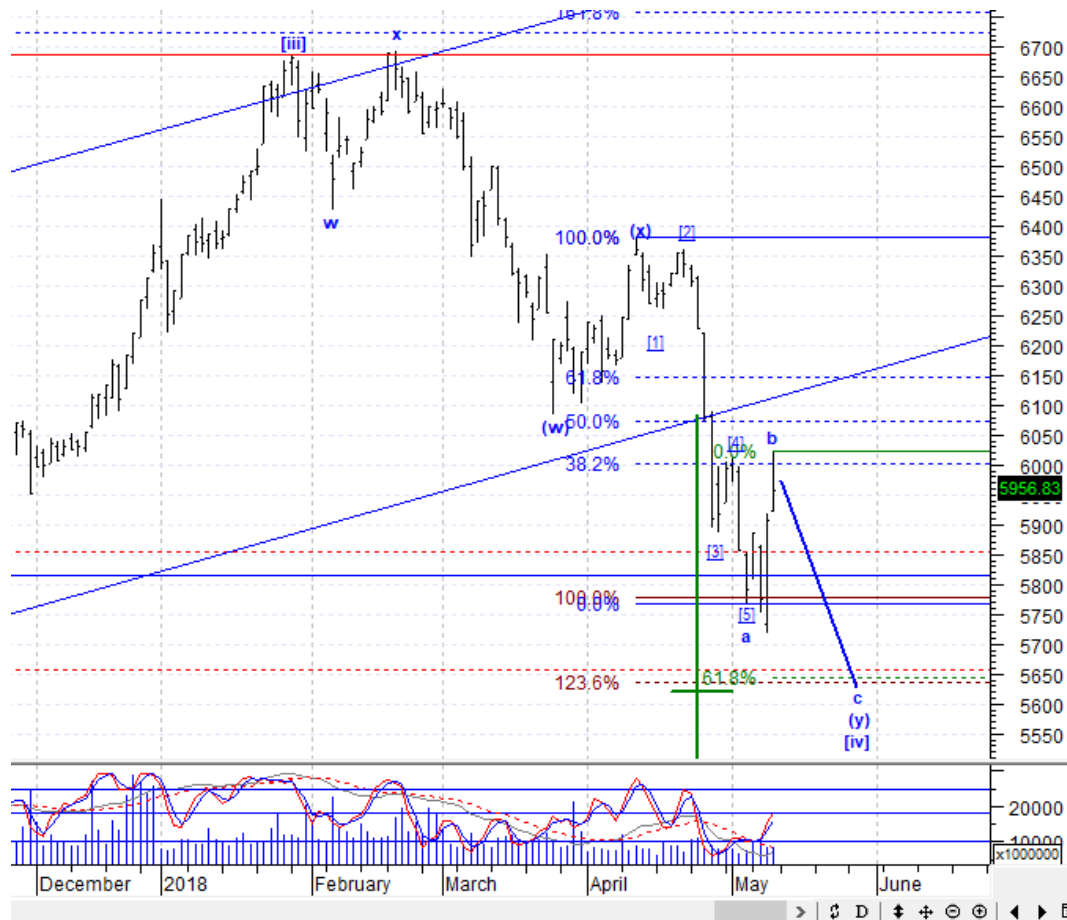
14 May 2018

# Elliottician Overview

- Jakarta Composite Index *Elliott Wave Perspective*
  - *Short Term View (1-2 days): Bearish*
- *Stocks Recommendation for Today*
  - *ACES; Trading Buy – Buy area 1240-1250; TP 1375; SL break 1210*
  - *DMAS; Trading Buy – Buy area 147-151; TP 190; SL break 144*
  - *PTRO; Trading Buy – Buy area 1800-1840; TP 2800, 3150; SL break 1535*
  - *AALI; Sell on Strength - Sell area 12550-12600; Downside target 11300*
  - *ASRI; Trading Sell - Sell area 340-344; Downside target 324*

# Jakarta Composite Index

## Elliott Wave Perspective



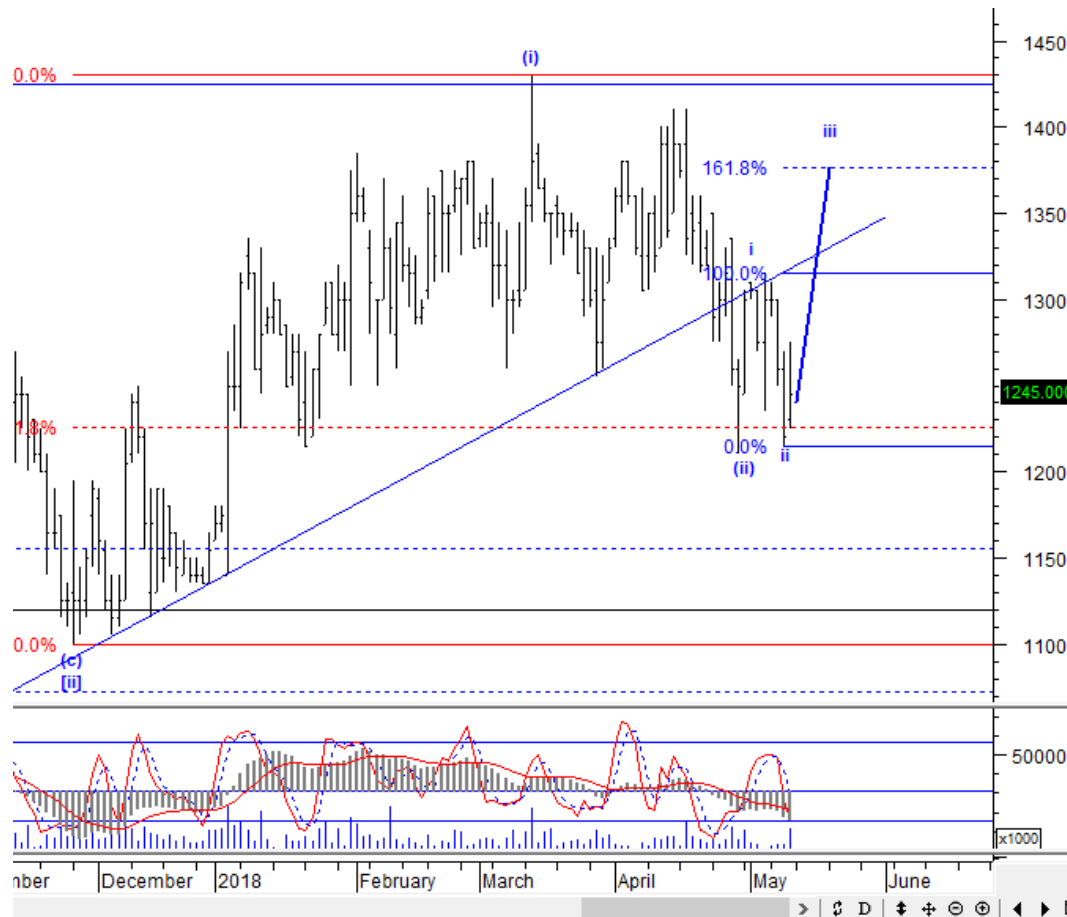
Kenaikan IHSG pada pekan lalu sudah mencapai target terdekat wave b. Karena itu, IHSG berpeluang turun lagi ke area 5640-5660 untuk membentuk wave c dari wave (y) dari wave [iv]. Kalaupun masih naik, kenaikannya akan terbatas hingga level 6075, lalu turun lagi. Karena itu, sebaiknya Anda kurangi posisi dulu terutama pada saham-saham *big cap*.

Support : 5640, 5715

Resisten : 6000, 6075

# Stock Recommendation for Today

**ACES:** Trading Buy – Buy area 1240-1250; TP 1375; SL break 1210



Kemarin ACES menguat dengan kenaikan volume. Hal tersebut dapat menjadi pertanda dimulainya kenaikan wave iii dari wave (iii) dengan target ideal di level 1375. Silakan ambil posisi di sekitar 1240-1250.

# Stock Recommendation for Today

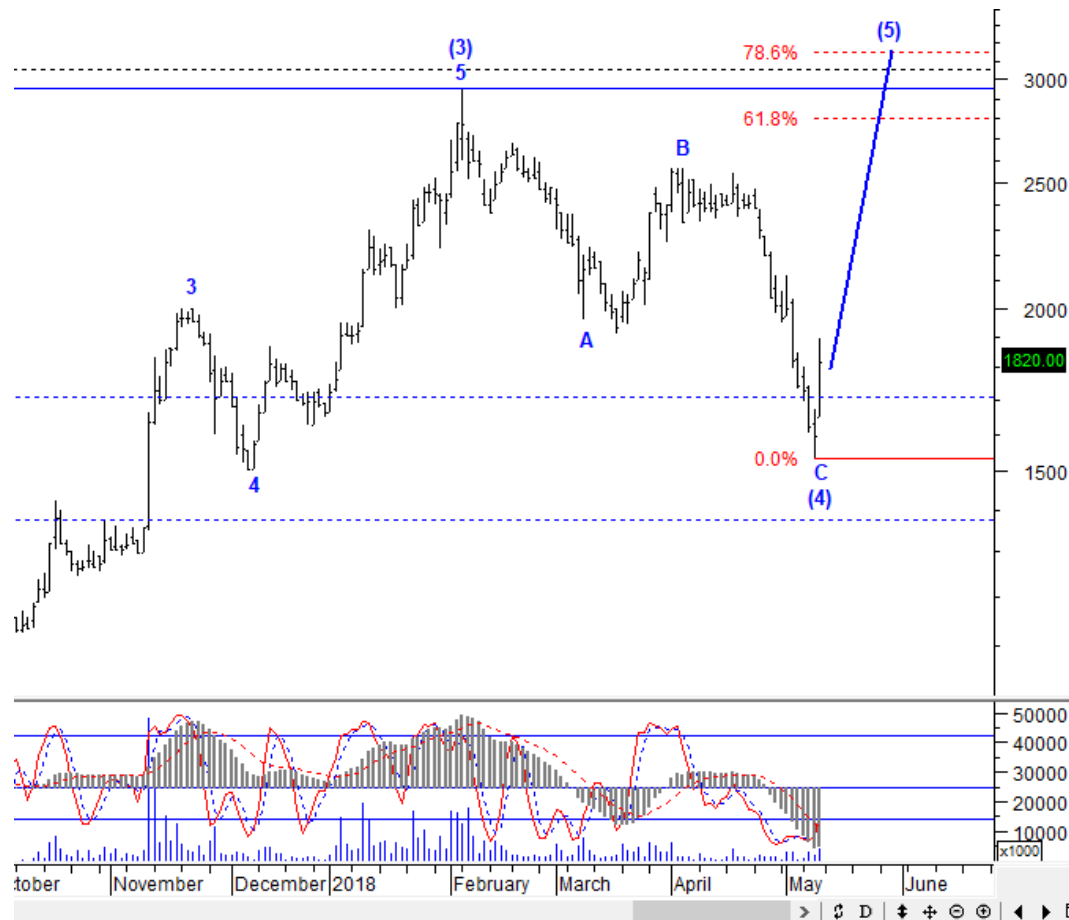
**DMAS:** Trading Buy – Buy area 147-151; TP 190; SL break 144



Kenaikan DMAS pada Jumat lalu memberikan konfirmasi selesainya pelemahan wave [v] sehingga DMAS berpeluang *rebound* menuju level 190. Anda dapat memanfaatkan momentum ini dengan akumulasi di sekitar 147-151. Batasi resiko Anda di level 144.

# Stock Recommendation for Today

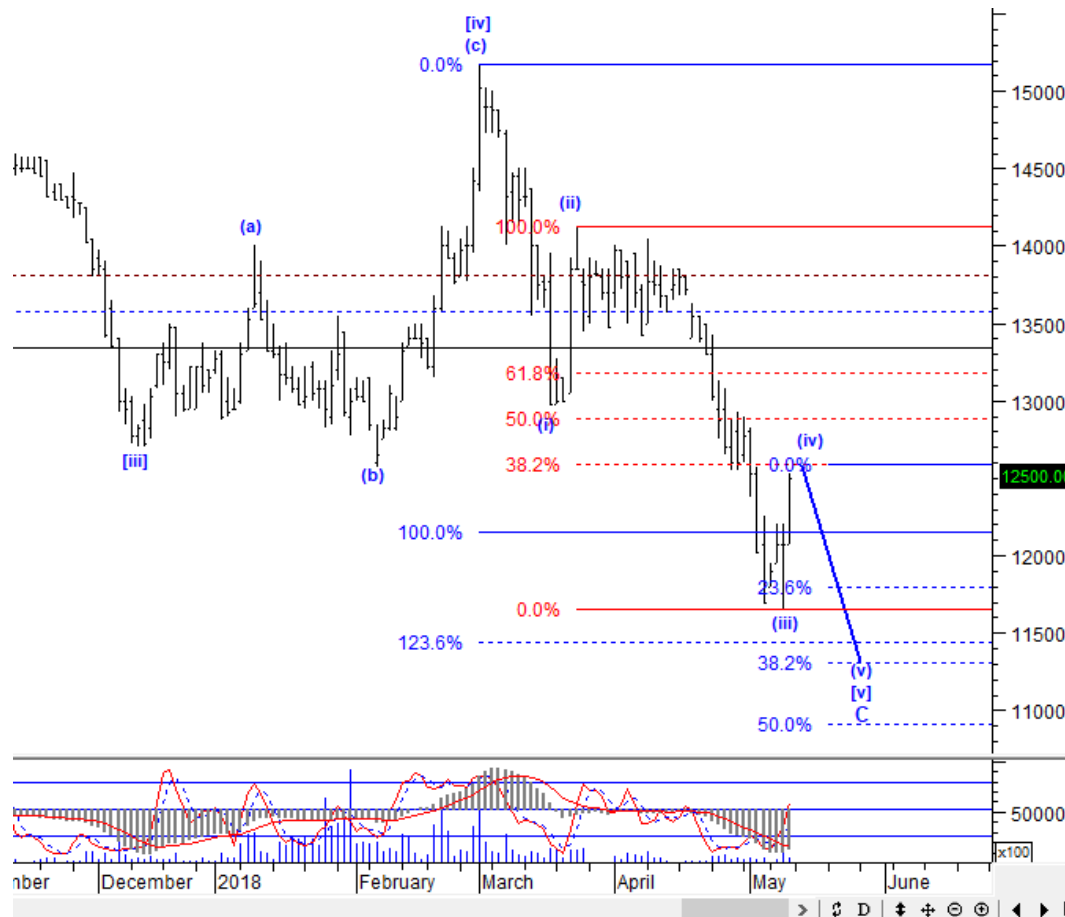
**PTRO:** *Trading Buy – Buy area 1800-1840; TP 2800, 3150; SL break 1535*



PTRO berhasil ditutup di level 1820 yang berarti di atas *weekly support* yang berada di level 1710. Ditambah lagi ada peningkatan volume pada akhir pekan lalu. Hal tersebut memberikan konfirmasi dimulainya kenaikan wave (5) menuju level 2800 sebagai target terdekat dan level 3150 sebagai target ideal. Silakan ambil posisi di sekitar 1800-1840. Perhatikan *money management* Anda karena jarak dengan batas SL-nya cukup lebar.

# Stock Recommendation for Today

**AAI:** *Sell on Strength - Sell area 12550-12600; Downside target 11300*



AAI sudah mendekati target ideal wave (iv) di sekitar 12550-12600. Setelah wave (iv) beres, AAI bakal turun memulai wave (v) hingga level 11300 atau bahkan lebih rendah lagi. Silakan SoS dulu saham ini.

# Stock Recommendation for Today

**ASRI:** *Trading Sell - Sell area 340-344; Downside target 324*



ASRI kembali turun dengan volume besar. Artinya penurunannya belum selesai dan masih akan menguji target idealnya di level 324. Silakan buang dulu saham ini di sekitar 340-344.



**PT NISP Sekuritas**  
**OCBC NISP Tower Lt. 21 (Head Office)**

Jl. Prof. Dr. Satrio Kav. 25  
Jakarta 12940 Indonesia  
Phone. (021) 2935 2788 (hunting)  
Fax. (021) 5794 4095  
Email: info@nispsekuritas.com  
Website: www.nispsekuritas.com

<b>Branches</b>	<b>Address</b>	<b>Phone:</b>	<b>Fax:</b>
<b>Pluit Jakarta</b>	Ruko Sentra Bisnis Blok C28 Jl. Pluit Sakti Raya No. 15 Jakarta Utara 14450	(021) 6667 5050 (hunting)	(021) 6667 5051

**Rating Definitions**

- Buy on Weakness (BoW) : We expect this stock could be bought below the last price.  
Trading Buy : We expect this stock could be bought at the last price.  
Sell on Strength (SoS) : We expect this stock could be sold above the last price.  
Trading Sell : We expect this stock could be sold at the last price.

**DISCLAIMER**

This report was produced by PT NISP Sekuritas, a member of the Indonesia Stock Exchange (IDX). The Information contained in this report has been obtained from public sources believed to be reliable and the options, analysis, forecasts, projections and expectations contained in this report are based on such information and are expressions of belief only. No representation or warranty, express or implied, is made that such information or opinion is accurate, complete or verified and it should not be relied upon as such. This report is provided solely for the information of clients of PT NISP Sekuritas who has to make their own investment decisions without reliance on this report. Neither PT NISP Sekuritas nor any officer or employee of PT NISP Sekuritas accept any liability whatsoever for any direct or consequential loss arising from any use of this report or its contents. PT NISP Sekuritas may be involved in transactions contrary to any opinions herein to make markets, or have positions in the securities recommended herein. PT NISP Sekuritas may seek or will seek investment banking or other business relationships with the companies within this report. This report is a copyright of PT NISP Sekuritas. For further information please contact our number 62-21-

29352788 or fax 62-21-57944095.