

NISP Daily Elliott Wave Research

12 January 2018

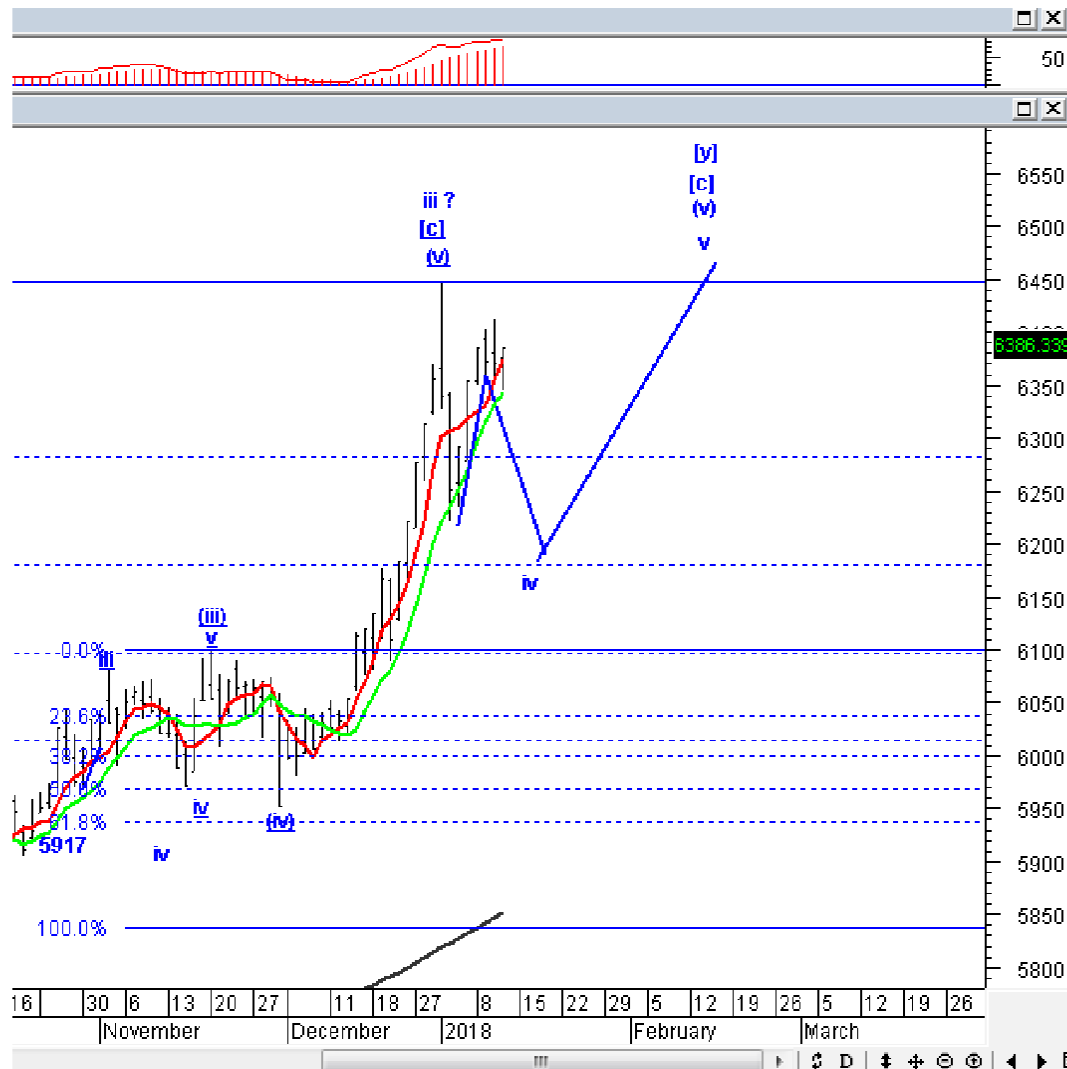


Elliottician Overview

- Jakarta Composite Index *Elliott Wave Perspective*
 - *Short Term View (1-2 days): Bullish*
- *Stocks Recommendation for Today*
 - **SCMA**; *Speculative buy – Buy area 2320-2350; TP 2550, 2700-2750; SL break 2300*
 - **TINS**; *Buy on weakness – Buy area 800-810; TP 880, 950; SL break 775*
 - **BRMS**; *Trading buy – Buy area 85-88; TP 98-100; SL break 83*
 - **MEDC**; *Sell on strength – Sell area 1080-1120; Target koreksi 1010, 915*
 - **LSIP**; *Sell on strength – Sell area 1420-1450; Target koreksi 1280-1320*

Jakarta Composite Index

Elliott Wave Perspective



IHSG kemarin ditutup menguat di level 6386, dan tertahan di *support* MA-5, yang bergeser lagi di level 6370. Kami tetap melihat level 6300 sebagai level *support* yang cukup vital. Jika IHSG ditutup di bawah level ini, IHSG sangat mungkin untuk terkoreksi lagi ke bawah 6200, karena selama IHSG belum *break* 6455, IHSG masih berada di *wave* iv, dan masih ada peluang ke bawah 6200. Pergerakan hari ini, IHSG cenderung bergerak *sideways*, tampaknya *closing* hari ini akan menjadi penentuan arah IHSG untuk minggu depan.

Support : 6250-6280, 6150
Resisten : 6350-6375

Stock Recommendation for Today

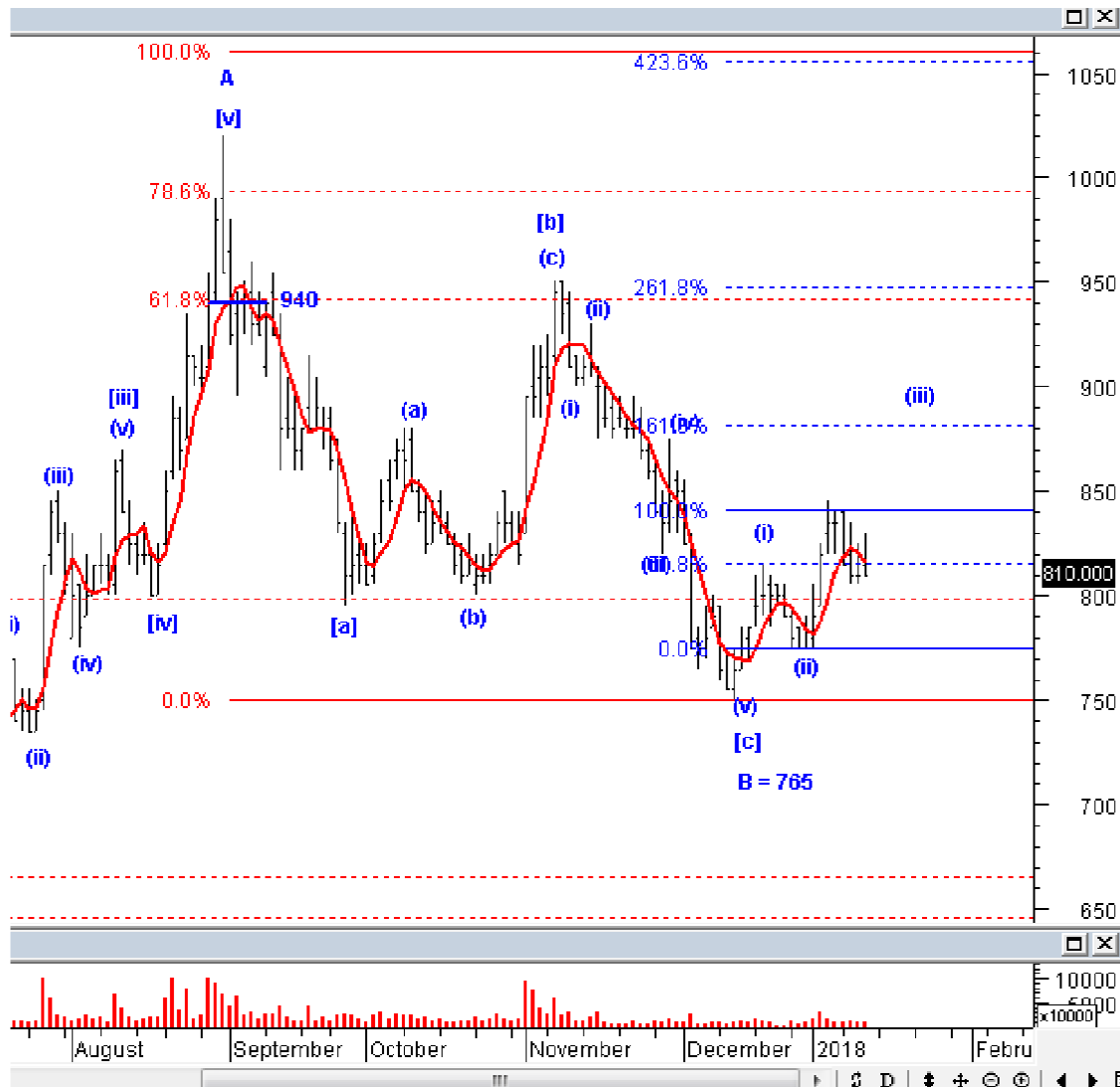
SCMA: *Speculative buy* – Buy area 2320-2350; TP 2550, 2700-2750; SL break 2300



SCMA harusnya sudah berada di akhir *wave* (c) dari *wave* [b], Anda bisa melakukan spekulatif beli di area yang kami berikan. Mengingat, rekomendasi kami adalah spekulatif beli, ada baiknya untuk tidak membeli dalam jumlah banyak, dan jaga ketat level *stoplossnya*. Jika SMCA ditutup di bawah 2300, SCMA punya kecenderungan untuk turun hingga 2100-2150. Tetapi, jika SCMA mampu mantul di *support* MA-40, dan berhasil *break* 2560, SCMA konfirm selesai membentuk *wave* [b] dan akan menuju 2700-2750.

Stock Recommendation for Today

TINS; Buy on weakness – Buy area 800-810; TP 880, 950; SL break 775



TINS harusnya masih *ontrack* berada di *wave* (iii), memang terlihat lambat, tetapi posisi TINS sudah *uptrend* jangka pendek. Silakan menambah posisi atau BoW TINS.

Stock Recommendation for Today

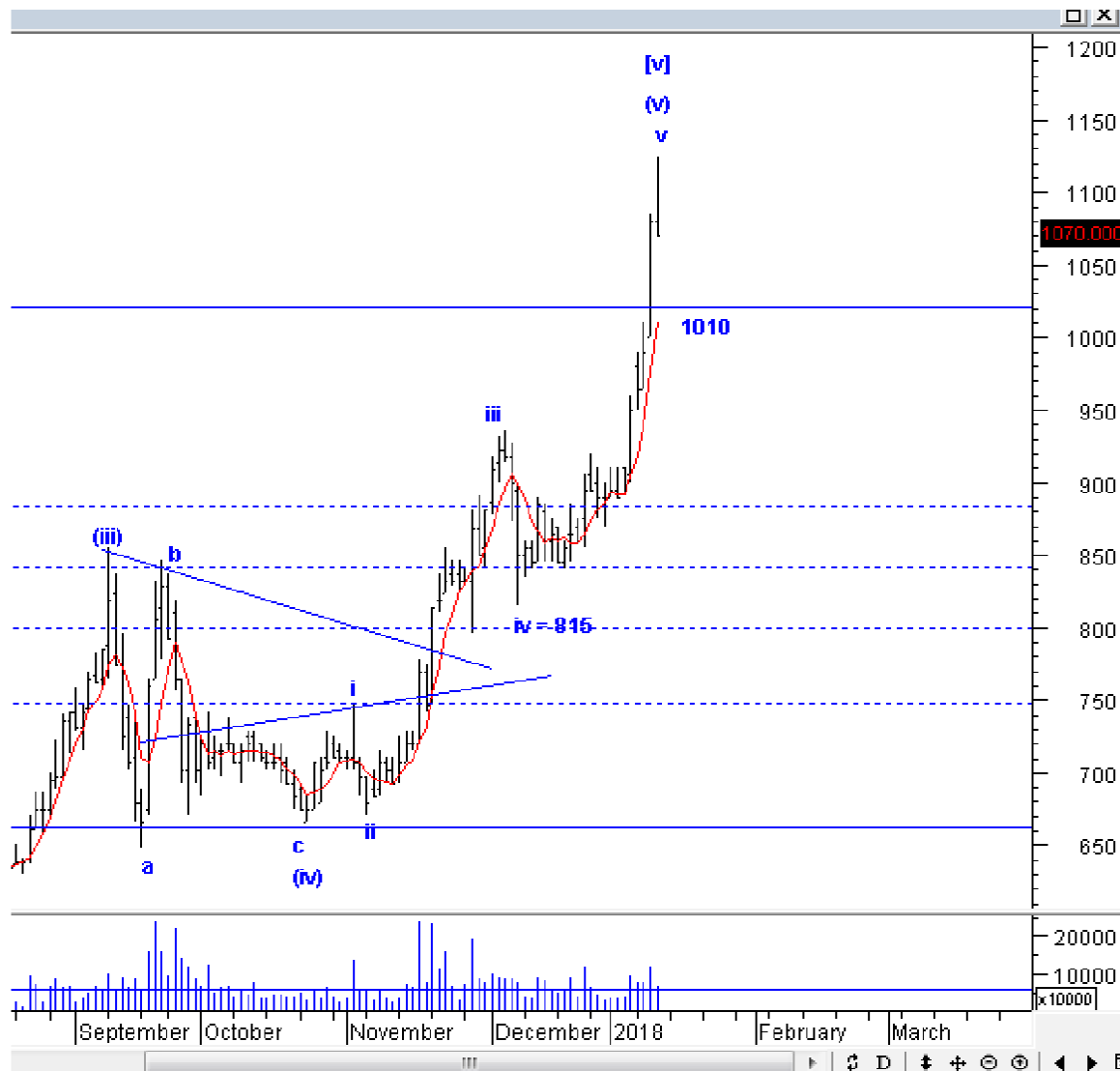
BRMS; *Trading buy – Buy area 85-88; TP 98-100; SL break 83*



BRMS kemarin menguat dengan volume luar biasa, ini mengkonfirmasi bahwa BRMS sedang berada di wave iii dari wave (iii), silakan *trading buy*, dan jaga ketat level *stoplossnya*. Karena BRMS termasuk saham spekulatif, hindari pembelian terlalu banyak, dan disiplin dengan *trading plan* yang kami sediakan.

Stock Recommendation for Today

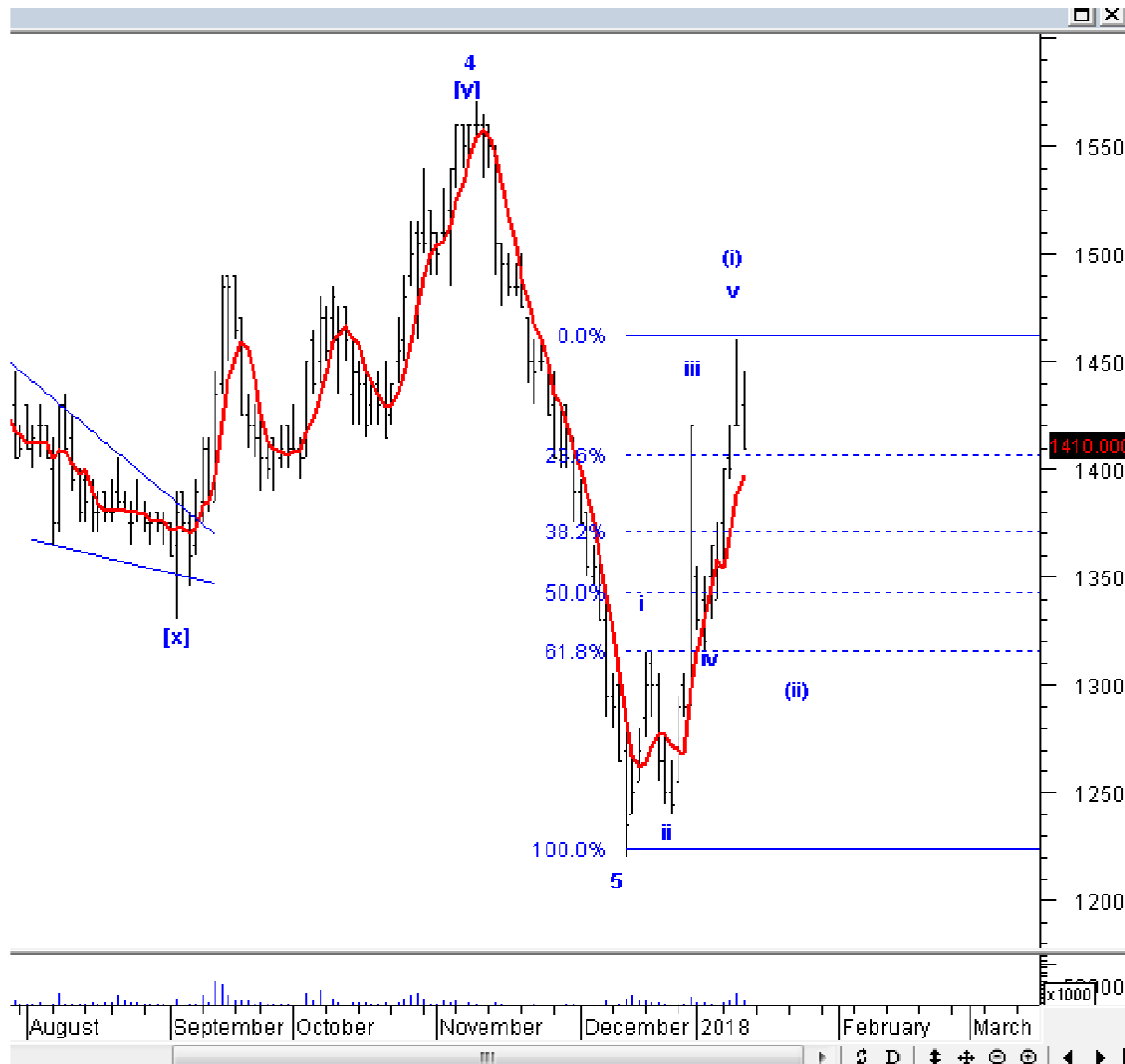
MEDC: *Sell on strength – Sell area 1080-1120; Target koreksi 1010, 915*



MEDC kemarin mulai terkoreksi, dan posisi saat ini, sudah berada di akhir *uptrend* dari wave v dari wave (v) dari wave [v]. Memang belum ada konfirmasi selesai, tetapi jika MEDC turun ke bawah 1010, MEDC konfirmasi mengakhiri *uptrend*nya, ada baiknya penggunaan setiap kesempatan naik untuk SoS dan *clear all position*, hindari MEDC untuk sementara waktu.

Stock Recommendation for Today

LSIP; *Sell on strength – Sell area 1420-1450; Target koreksi 1280-1320*



Posisi LSIP saat ini sudah berada di akhir wave v dari wave (i), sehingga rawan terkoreksi membentuk wave (ii), silakan SoS LSIP, dan Anda dapat lakukan *buyback* jika LSIP turun ke 2320 atau di bawah itu.

PT NISP Sekuritas
OCBC NISP Tower Lt. 21 (Head Office)
Jl. Prof. Dr. Satrio Kav. 25
Jakarta 12940 Indonesia
Phone. (021) 2935 2788 (hunting)
Fax. (021) 5794 4095
Email: info@nispsekuritas.com
Website: www.nispsekuritas.com

Branches	Address	Phone:	Fax:
Pluit Jakarta	Ruko Sentra Bisnis Blok C28 Jl. Pluit Sakti Raya No. 15 Jakarta Utara 14450	(021) 6667 5050 (hunting)	(021) 6667 5051

Rating Definitions

Buy on Weakness (BoW) : We expect this stock could be bought below the last price.
Trading Buy : We expect this stock could be bought at the last price.
Sell on Strength (SoS) : We expect this stock could be sold above the last price.
Trading Sell : We expect this stock could be sold at the last price.

DISCLAIMER

This report was produced by PT NISP Sekuritas, a member of the Indonesia Stock Exchange (IDX). The Information contained in this report has been obtained from public sources believed to be reliable and the options, analysis, forecasts, projections and expectations contained in this report are based on such information and are expressions of belief only. No representation or warranty, express or implied, is made that such information or opinion is accurate, complete or verified and it should not be relied upon as such. This report is provided solely for the information of clients of PT NISP Sekuritas who has to make their own investment decisions without reliance on this report. Neither PT NISP Sekuritas nor any officer or employee of PT NISP Sekuritas accept any liability whatsoever for any direct or consequential loss arising from any use of this report or its contents. PT NISP Sekuritas may be involved in transactions contrary to any opinions herein to make markets, or have positions in the securities recommended herein. PT NISP Sekuritas may seek or will seek investment banking or other business relationships with the companies within this report. This report is a copyright of PT NISP Sekuritas. For further information please contact our number 62-21-29352788 or fax 62-21-57944095.