

NISP Daily Elliott Wave Research

11 September 2017



Elliottician Overview

- Jakarta Composite Index *Elliott Wave Perspective*
 - *Short Term View (1-2 days): Bearish*
- *Stocks Recommendation for Today*
 - *ASII; Add position – Buy area 7775-7800; TP 8150-8175; SL break 7650*
 - *SIMP; Add position – Buy area 496-505; TP 540, 565; SL break 490*
 - *BWPT; Add position – Buy if break 226; TP 244, 264; SL break 212*
 - *PTBA; Sell on strength – Sell area 12400-12500; Target koreksi 11200, 10200*
 - *ITMG; Sell on strength – Sell area 20000-20100; Target koreksi 16500, 14500*

Jakarta Composite Index

Elliott Wave Perspective

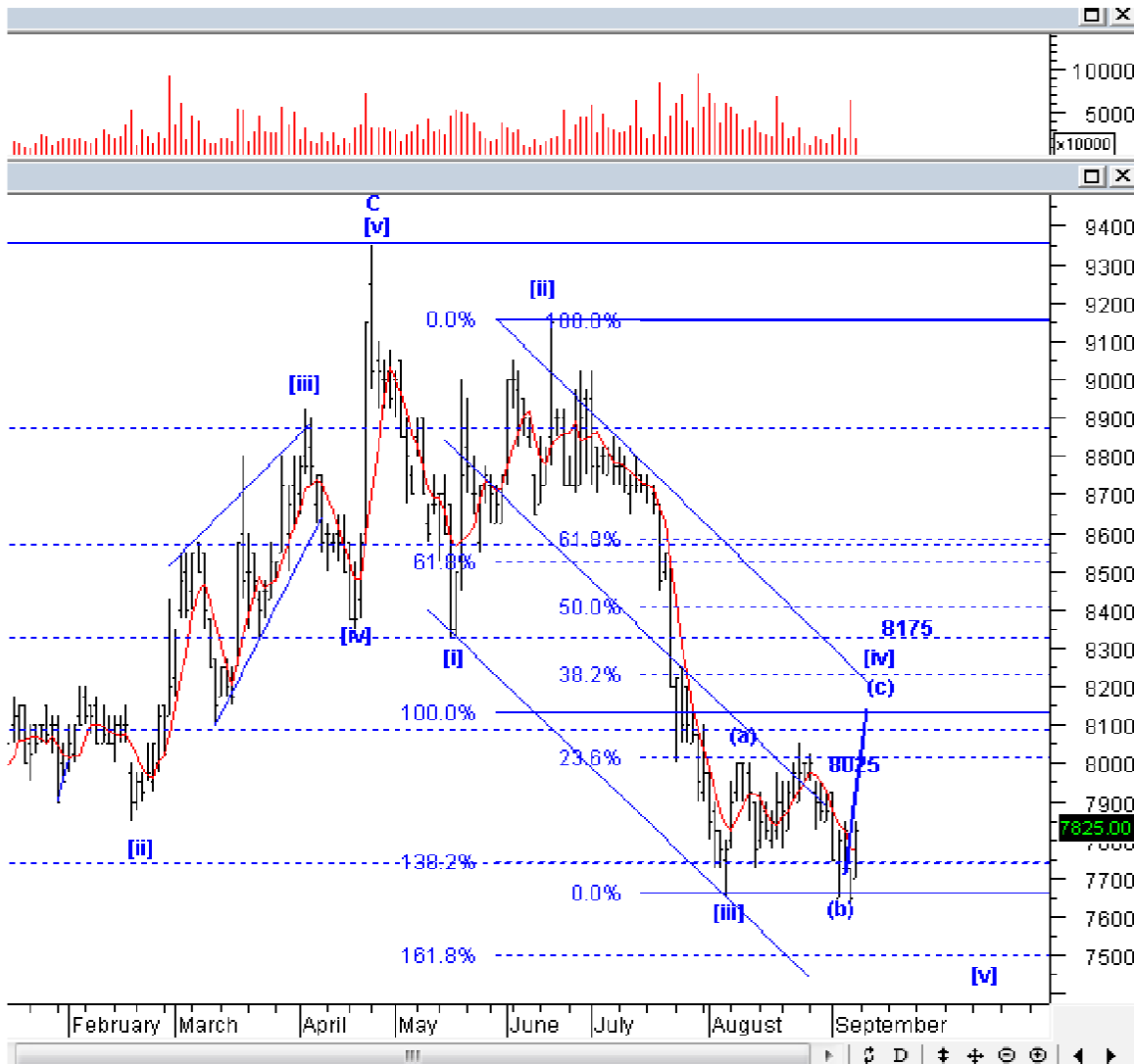


Selamat pagi, IHSG kemarin Jumat ditutup menguat agresif di 5857, jika minggu ini IHSG mampu ditutup di atas 5885, IHSG tampaknya konfirm melanjutkan wave v dari wave (v). Tetap manfaatkan penguatan pada IHSG untuk SoS dan *clear all position*.

Support : 5750, 5642
Resisten : 5950

Stock Recommendation for Today

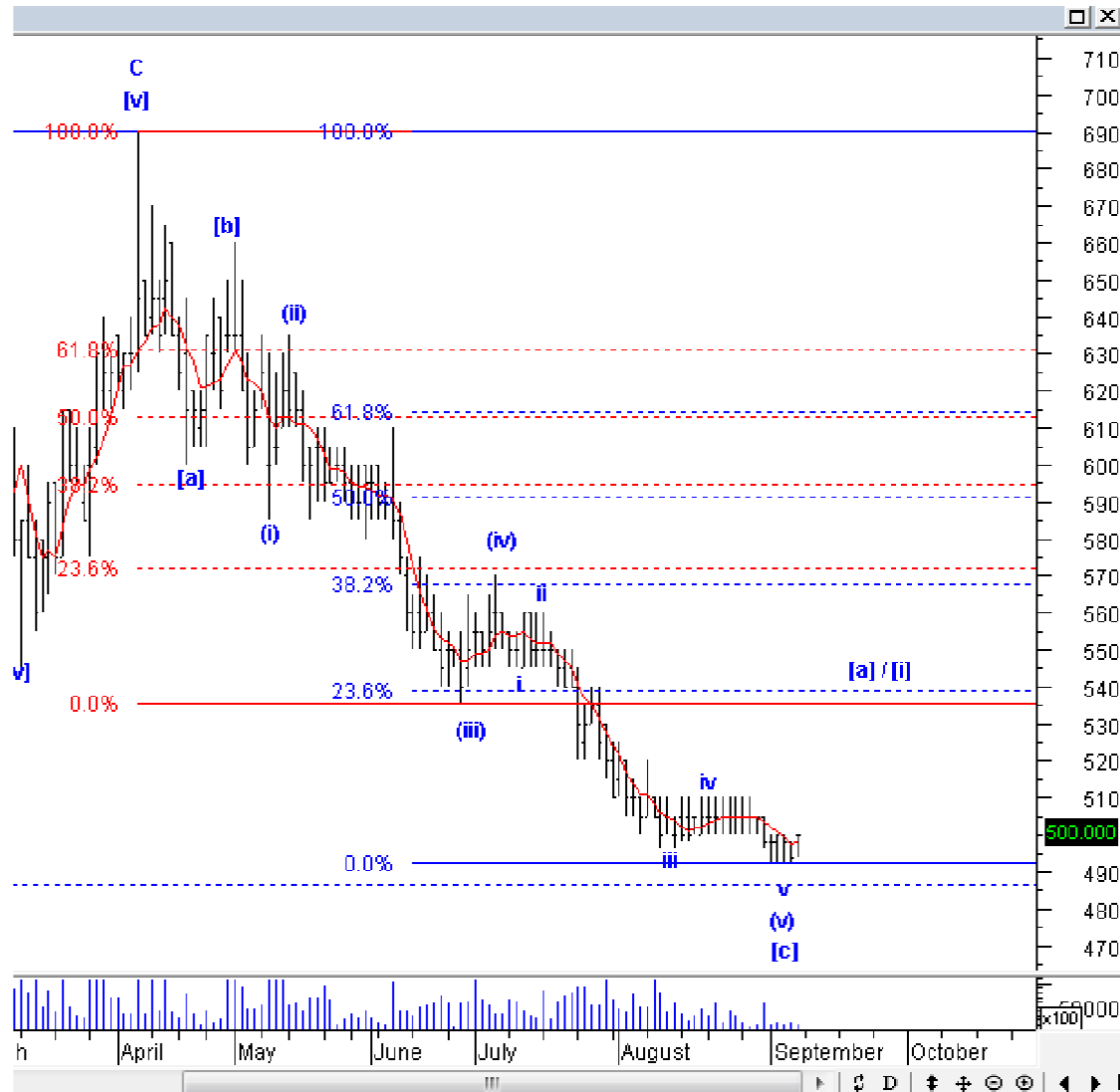
ASII: Add position – Buy area 7775-7800; TP 8150-8175; SL break 7650



ASII kemarin menguat, meskipun volume yang terbentuk relatif kecil. Seharusnya ASII masih dapat menguat lagi menyelesaikan wave (c) dari wave [iv]. Silakan menambah posisi pada ASII.

Stock Recommendation for Today

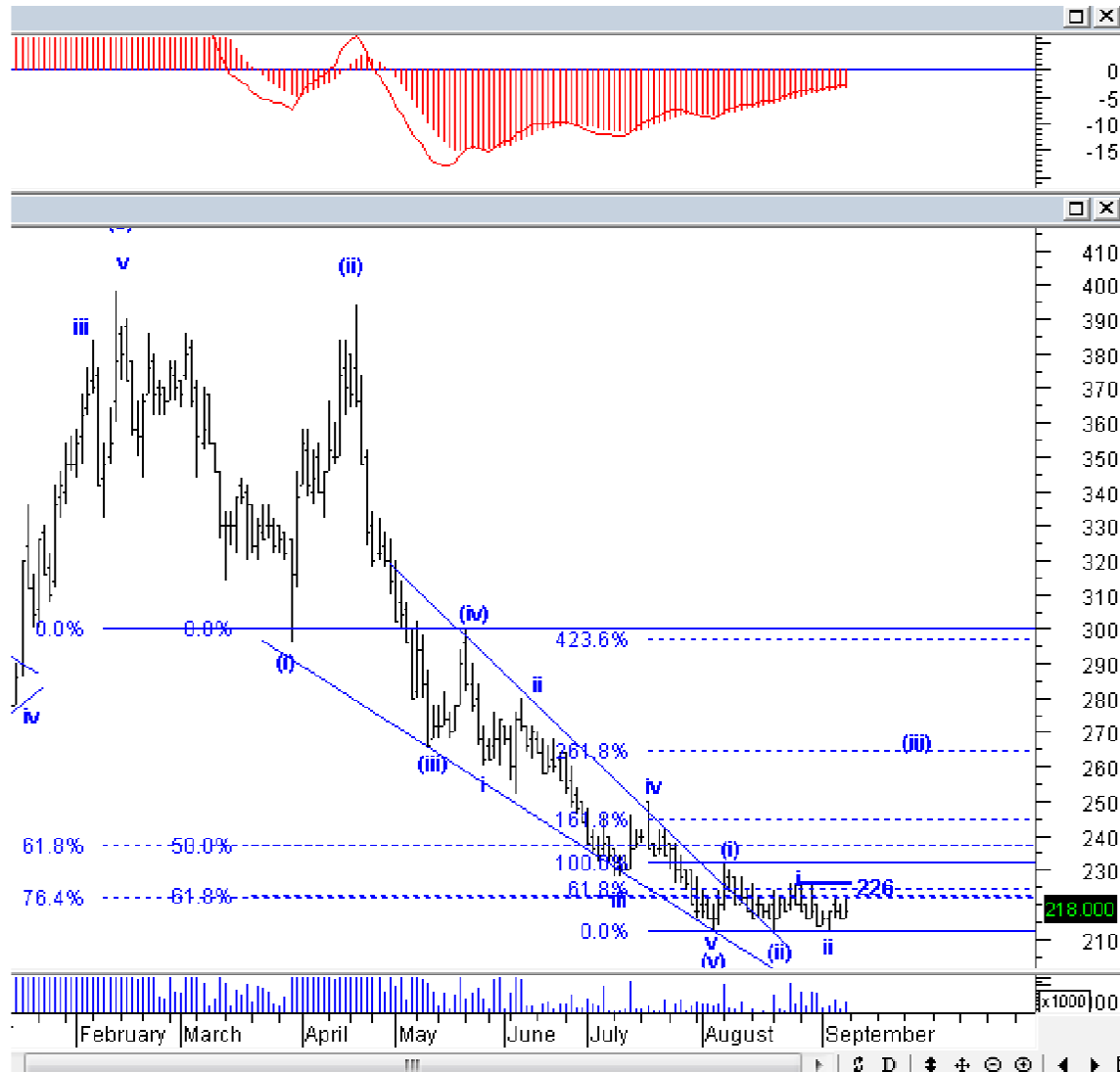
SIMP; Add position – Buy area 496-505; TP 540, 565; SL break 490



SIMP kemarin Jumat terlihat mulai menguat dan ditutup di atas MA-5, seharusnya SIMP akan naik agresif. Manfaatkan koreksi untuk menambah posisi pada SIMP.

Stock Recommendation for Today

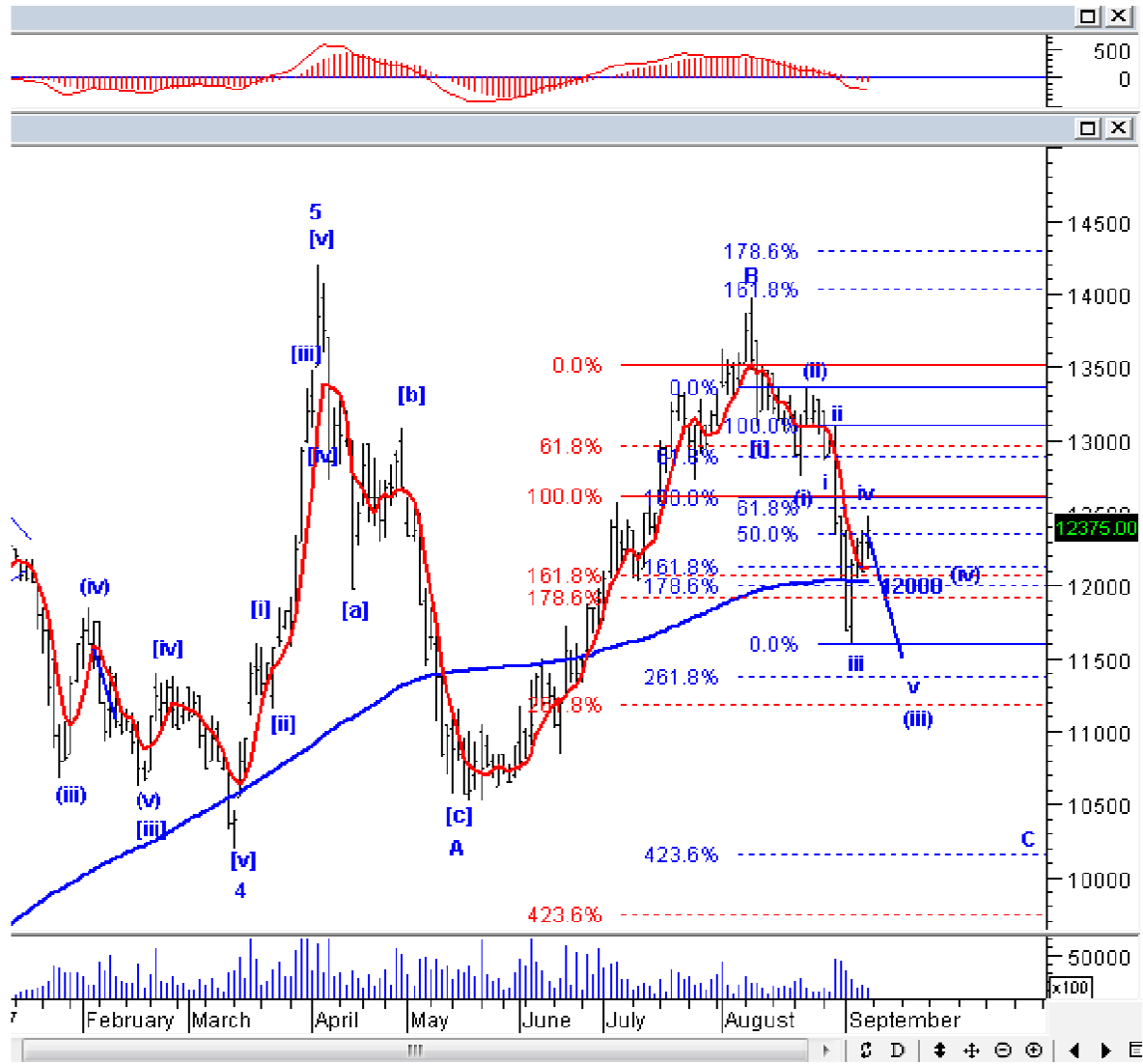
BWPT; Add position – Buy if break 226; TP 244, 264; SL break 212



BWPT harusnya sebentar lagi akan *break resistance 226*, jika *break 226*, BWPT akan konfirm berada di *wave iii* dari *wave (iii)*. Silakan menambah posisi pada BWPT.

Stock Recommendation for Today

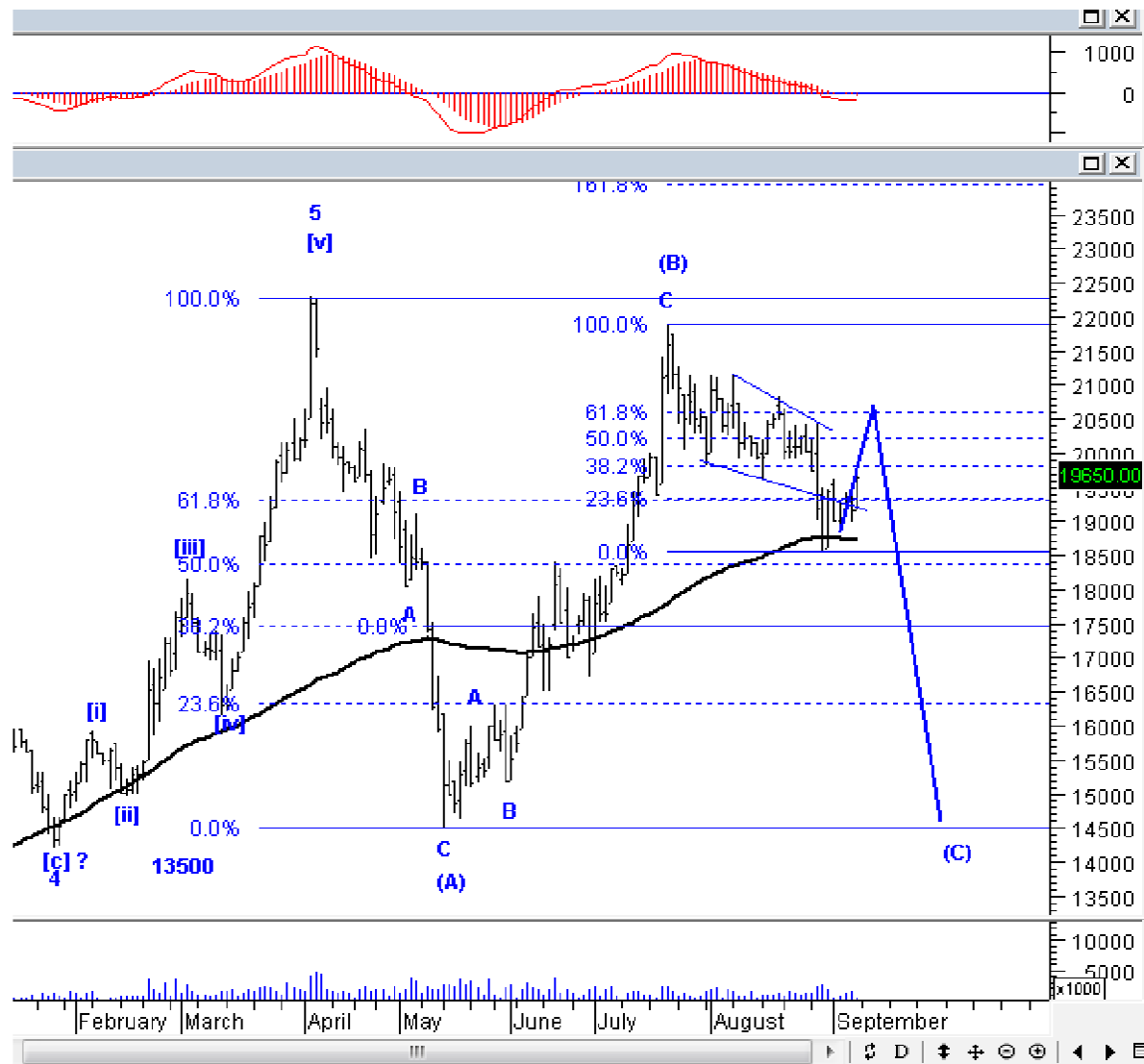
PTBA: *Sell on strength – Sell area 12400-12500; Target koreksi 11200, 10200*



PTBA harusnya sudah berada di akhir wave iv, dan rawan untuk turun lagi ke bawah MA-200, silakan SoS PTBA.

Stock Recommendation for Today

ITMG; *Sell on strength – Sell area 20000-20100; Target koreksi 16500, 14500*



ITMG masih berada di wave (C), dan rebound yang terjadi minggu lalu, harusnya akan selesai. Silakan SoS dan clear all position.

PT NISP Sekuritas
OCBC NISP Tower Lt. 21 (Head Office)
Jl. Prof. Dr. Satrio Kav. 25
Jakarta 12940 Indonesia
Phone. (021) 2935 2788 (hunting)
Fax. (021) 5794 4095
Email: info@nispsekuritas.com
Website: www.nispsekuritas.com

Branches	Address	Phone:	Fax:
Pluit Jakarta	Ruko Sentra Bisnis Blok C28 Jl. Pluit Sakti Raya No. 15 Jakarta Utara 14450	(021) 6667 5050 (hunting)	(021) 6667 5051

Rating Definitions

- Buy on Weakness (BoW) : We expect this stock could be bought below the last price.
Trading Buy : We expect this stock could be bought at the last price.
Sell on Strength (SoS) : We expect this stock could be sold above the last price.
Trading Sell : We expect this stock could be sold at the last price.

DISCLAIMER

This report was produced by PT NISP Sekuritas, a member of the Indonesia Stock Exchange (IDX). The Information contained in this report has been obtained from public sources believed to be reliable and the options, analysis, forecasts, projections and expectations contained in this report are based on such information and are expressions of belief only. No representation or warranty, express or implied, is made that such information or opinion is accurate, complete or verified and it should not be relied upon as such. This report is provided solely for the information of clients of PT NISP Sekuritas who has to make their own investment decisions without reliance on this report. Neither PT NISP Sekuritas nor any officer or employee of PT NISP Sekuritas accept any liability whatsoever for any direct or consequential loss arising from any use of this report or its contents. PT NISP Sekuritas may be involved in transactions contrary to any opinions herein to make markets, or have positions in the securities recommended herein. PT NISP Sekuritas may seek or will seek investment banking or other business relationships with the companies within this report. This report is a copyright of PT NISP Sekuritas. For further information please contact our number 62-21-29352788 or fax 62-21-57944095.