

NISP Daily Elliott Wave Research

10 October 2018

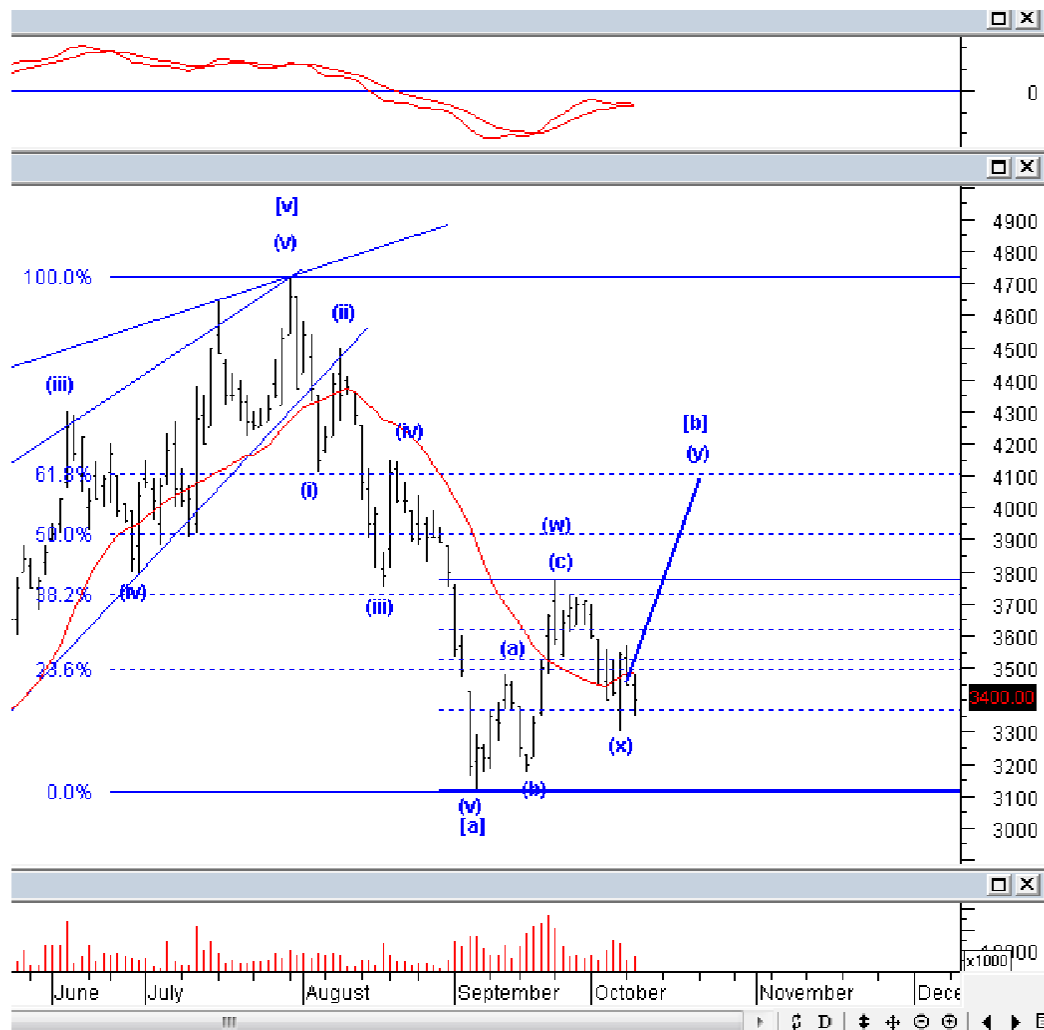


Elliottician Overview

- Jakarta Composite Index *Elliott Wave Perspective*
 - *Short Term View (1-2 days): Bullish*
- *Stocks Recommendation for Today*
 - **INCO**; *Buy on weakness – Buy area 3390-3400; TP 3760, 3920, 4100; SL 3170*
 - **TINS**; *Buy on weakness - Buy area 720-725; TP 770, 810; SL 700*
 - **ERAA**; *Add position - Buy area 2180-2220; TP 2400, 2600, 2750; SL 2070*
 - **CPIN**; *Sell on strength; Sell area 5100-5150; Downside target 4650, 4400*
 - **SILO**; *Sell on strength; Sell area 2700-2720; Downside target 2500, 2000, 1900*

Stock Recommendation for Today

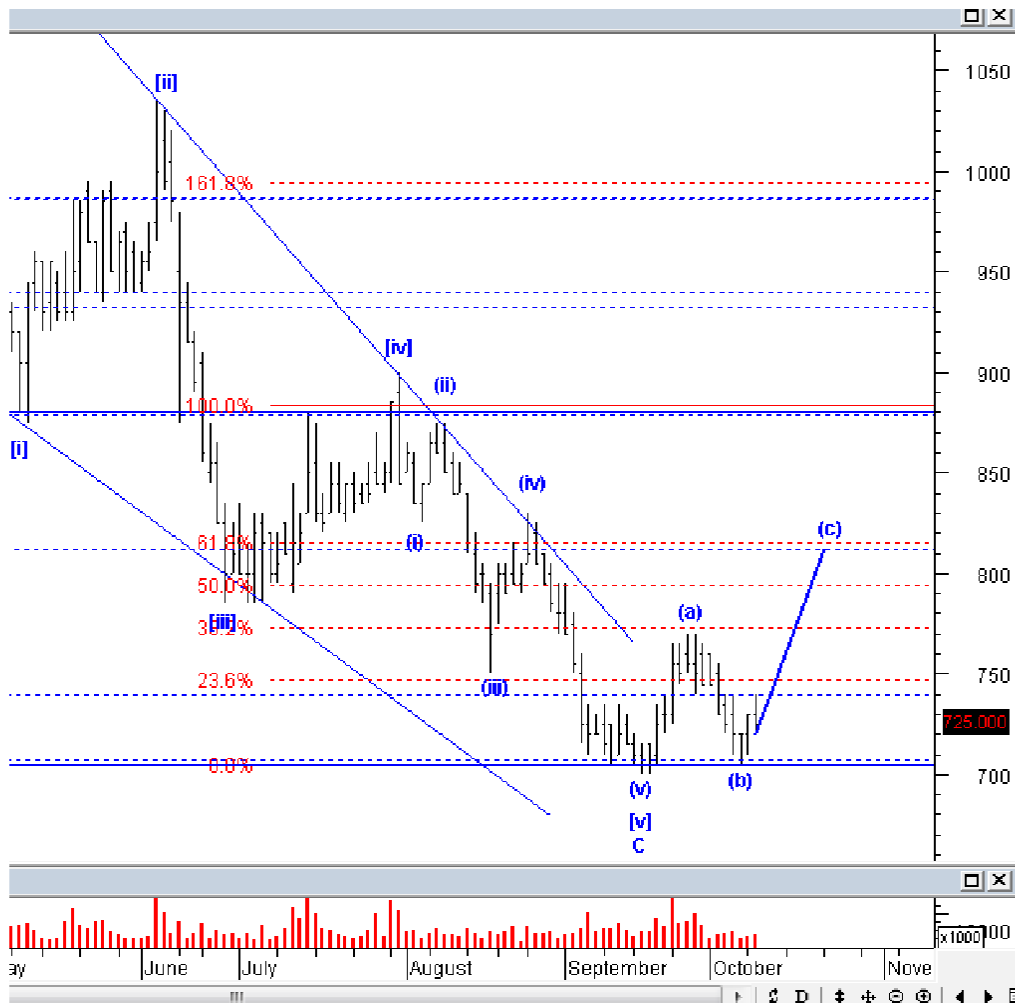
INCO: *Buy on weakness – Buy area 3390-3400; TP 3760, 3920, 4100; SL 3170*



INCO harusnya masih *ontrack* berada di *wave* (y) dari *wave* [b]. Silakan BoW INCO, dan batasi resiko dengan menjaga level *stoploss*-nya.

Stock Recommendation for Today

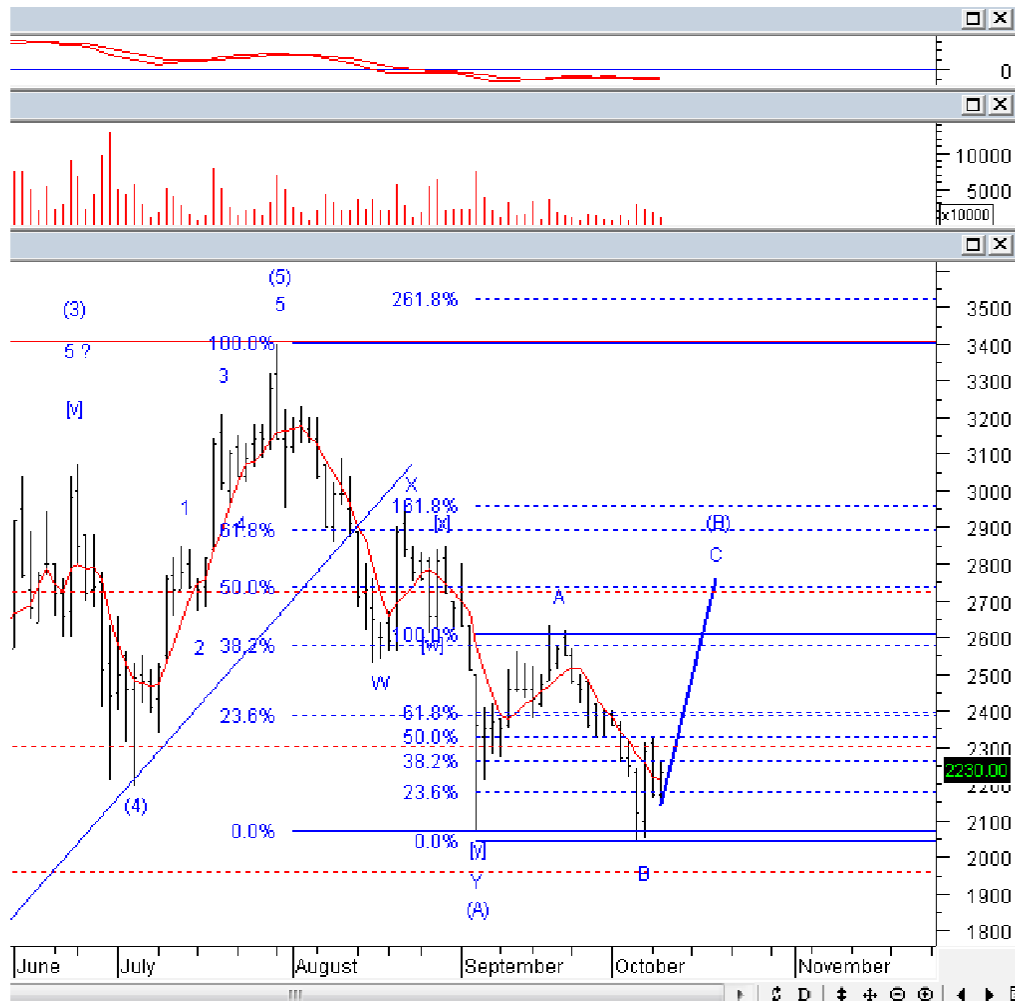
TINS: Buy on weakness - Buy area 720-725; TP 770, 810; SL 700



TINS masih *ontrack* berada di wave (c), dan harusnya TINS masih akan melanjutkan penguatannya. Silakan BoW dan batasi resiko jika TINS turun ke bawah 700.

Stock Recommendation for Today

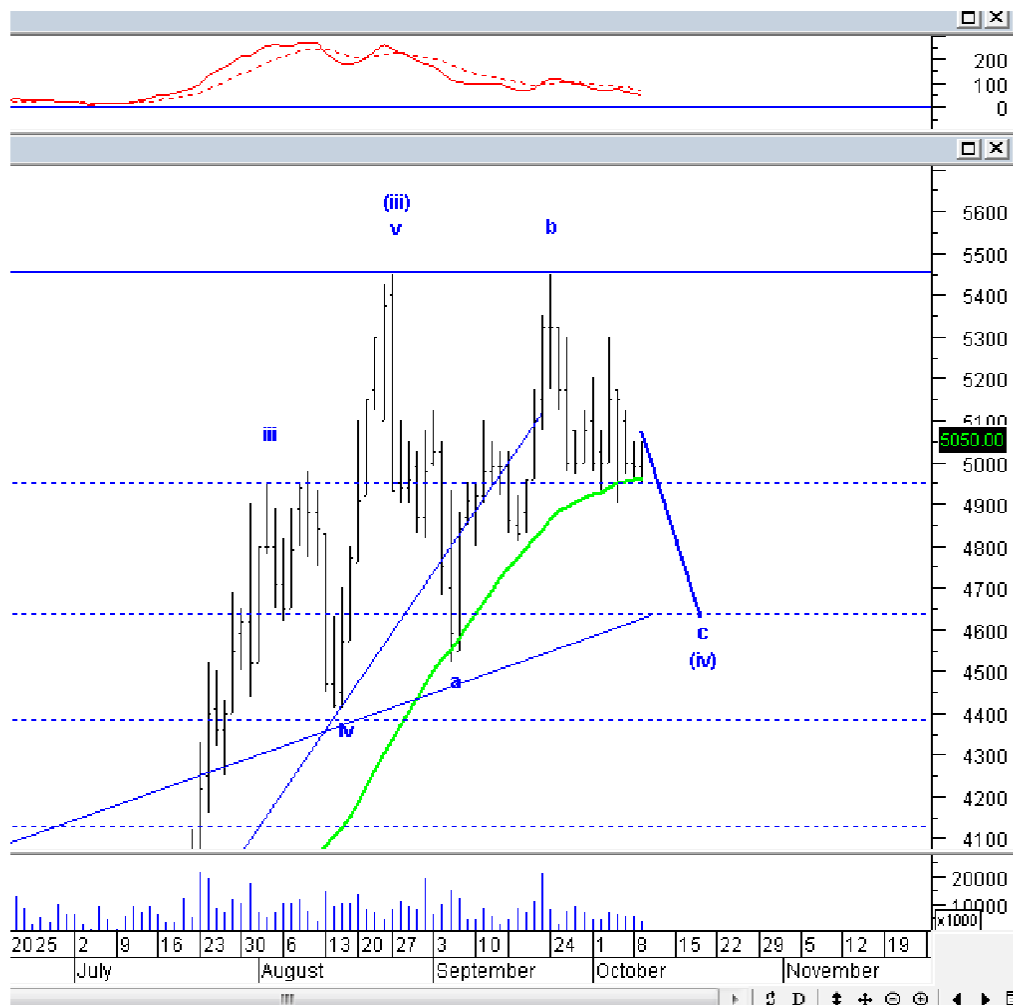
ERAA: Add position - Buy area 2180-2220; TP 2400, 2600, 2750; SL 2070



ERAA pernah kami rekomendasikan beli, meskipun ERAA sempat turun ke bawah 2070, tetapi ERAA belum pernah ditutup di bawah 2070, yang artinya ERAA masih *ontrack* berada di *flat correction*. Posisi ERAA saat ini masih mengawali *wave C* dari *wave (B)*, sehingga kami masih rekomendasikan untuk menambah posisi pada ERAA. Batasi resiko dengan melakukan *cutloss*, jika ERAA ditutup di bawah 2070.

Stock Recommendation for Today

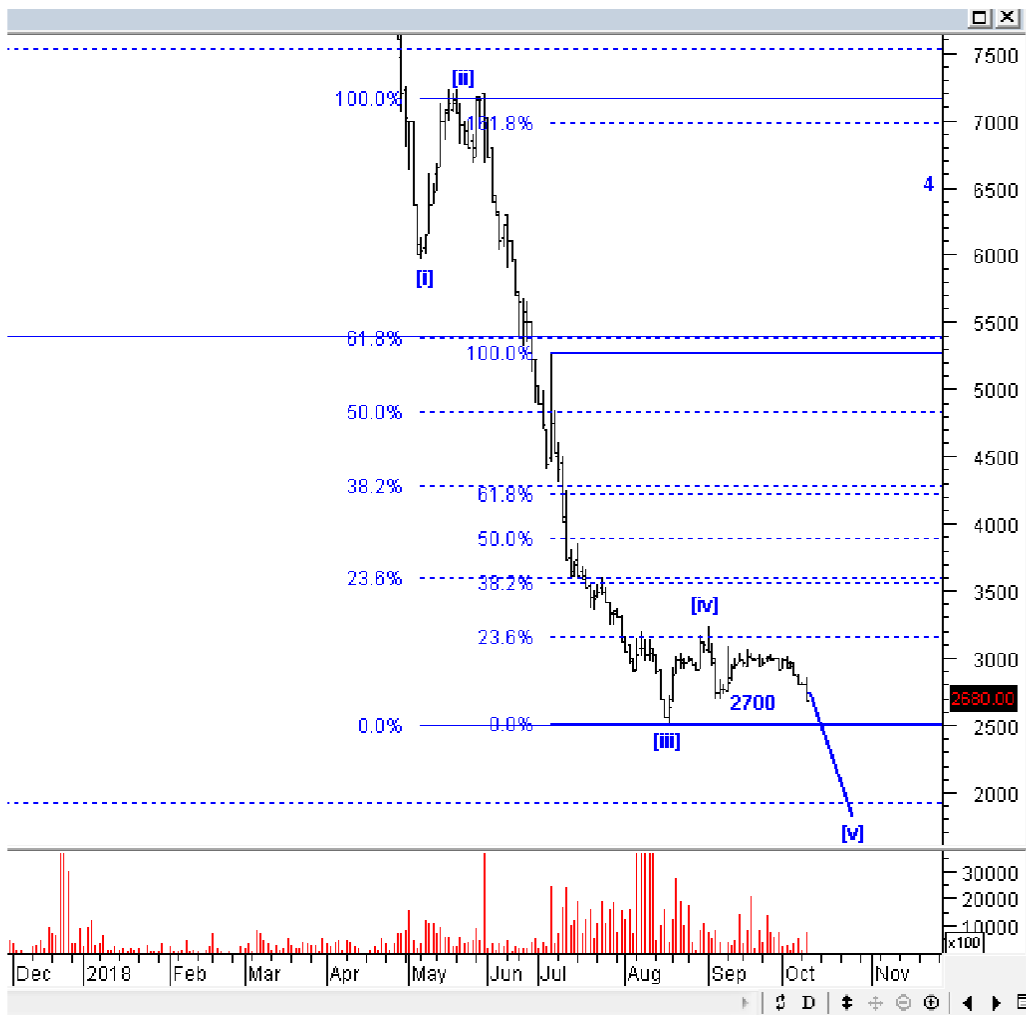
CPIN: *Sell on strength; Sell area 5100-5150; Downside target 4650, 4400*



CPIN masih rawan untuk koreksi, terutama jika CPIN turun ke bawah 4900, mengingat selama CPIN masih di bawah 5500, CPIN masih berada di wave c dari wave (iv). Hindari CPIN terlebih dahulu, dan SoS jika Anda masih memiliki CPIN.

Stock Recommendation for Today

SILO: *Sell on strength; Sell area 2700-2720; Downside target 2500, 2000, 1900*



SILO berada di wave [v], dan SILO sudah turun ke bawah 2700, sehingga SILO rawan turun agresif. Idealnya wave [v] SILO berpotensi hingga level 1900-2000. Silakan SoS dan hindari SILO terlebih dahulu.

PT NISP Sekuritas
OCBC NISP Tower Lt. 21 (Head Office)
Jl. Prof. Dr. Satrio Kav. 25
Jakarta 12940 Indonesia
Phone. (021) 2935 2788 (hunting)
Fax. (021) 5794 4095
Email: info@nispsekuritas.com
Website: www.nispsekuritas.com

Branches	Address	Phone:	Fax:
Pluit Jakarta	Ruko Sentra Bisnis Blok C28 Jl. Pluit Sakti Raya No. 15 Jakarta Utara 14450	(021) 6667 5050 (hunting)	(021) 6667 5051

Rating Definitions

Buy on Weakness (BoW) : We expect this stock could be bought below the last price.
Trading Buy : We expect this stock could be bought at the last price.
Sell on Strength (SoS) : We expect this stock could be sold above the last price.
Trading Sell : We expect this stock could be sold at the last price.

DISCLAIMER

This report was produced by PT NISP Sekuritas, a member of the Indonesia Stock Exchange (IDX). The Information contained in this report has been obtained from public sources believed to be reliable and the options, analysis, forecasts, projections and expectations contained in this report are based on such information and are expressions of belief only. No representation or warranty, express or implied, is made that such information or opinion is accurate, complete or verified and it should not be relied upon as such. This report is provided solely for the information of clients of PT NISP Sekuritas who has to make their own investment decisions without reliance on this report. Neither PT NISP Sekuritas nor any officer or employee of PT NISP Sekuritas accept any liability whatsoever for any direct or consequential loss arising from any use of this report or its contents. PT NISP Sekuritas may be involved in transactions contrary to any opinions herein to make markets, or have positions in the securities recommended herein. PT NISP Sekuritas may seek or will seek investment banking or other business relationships with the companies within this report. This report is a copyright of PT NISP Sekuritas. For further information please contact our number 62-21-29352788 or fax 62-21-57944095.