

# ***NISP Daily Elliott Wave Research***

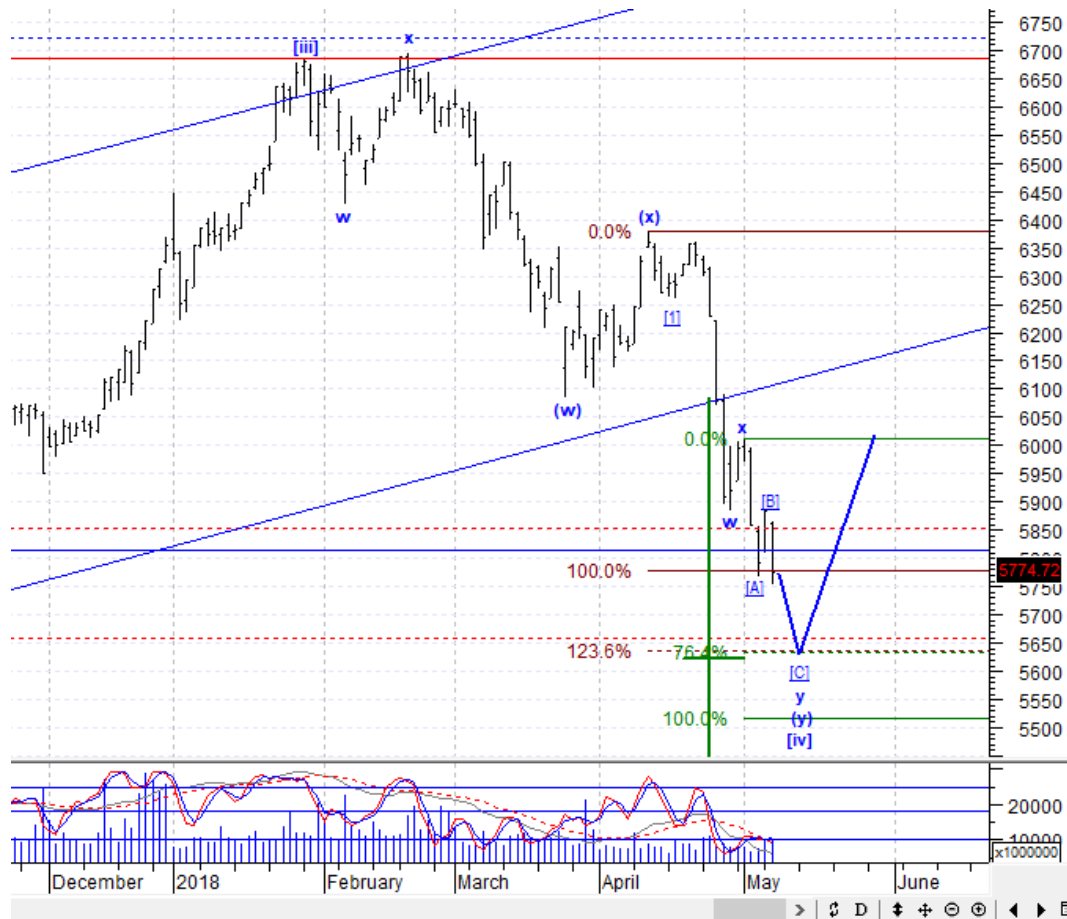
9 May 2018

# Elliottician Overview

- Jakarta Composite Index *Elliott Wave Perspective*
  - *Short Term View (1-2 days): Bearish*
- *Stocks Recommendation for Today*
  - **ADHI**; *Buy on Weakness - Buy area 1750-1775; TP 1930, 2040; SL break 1700*
  - **BMRI**; *Buy on Weakness - Buy area 6450-6550; TP 7100, 7450; SL break 6100*
  - **CPIN**; *Trading Buy – Buy area 3430-3470; TP 3900; SL break 3340*
  - **PTPP**; *Buy on Weakness - Buy area 2000-2030; TP 2210, 2330; SL break 1900*
  - **MEDC**; *Buy on Weakness - Buy area 1090-1100; TP 1270, 1330; SL break 1070*

# Jakarta Composite Index

## Elliott Wave Perspective



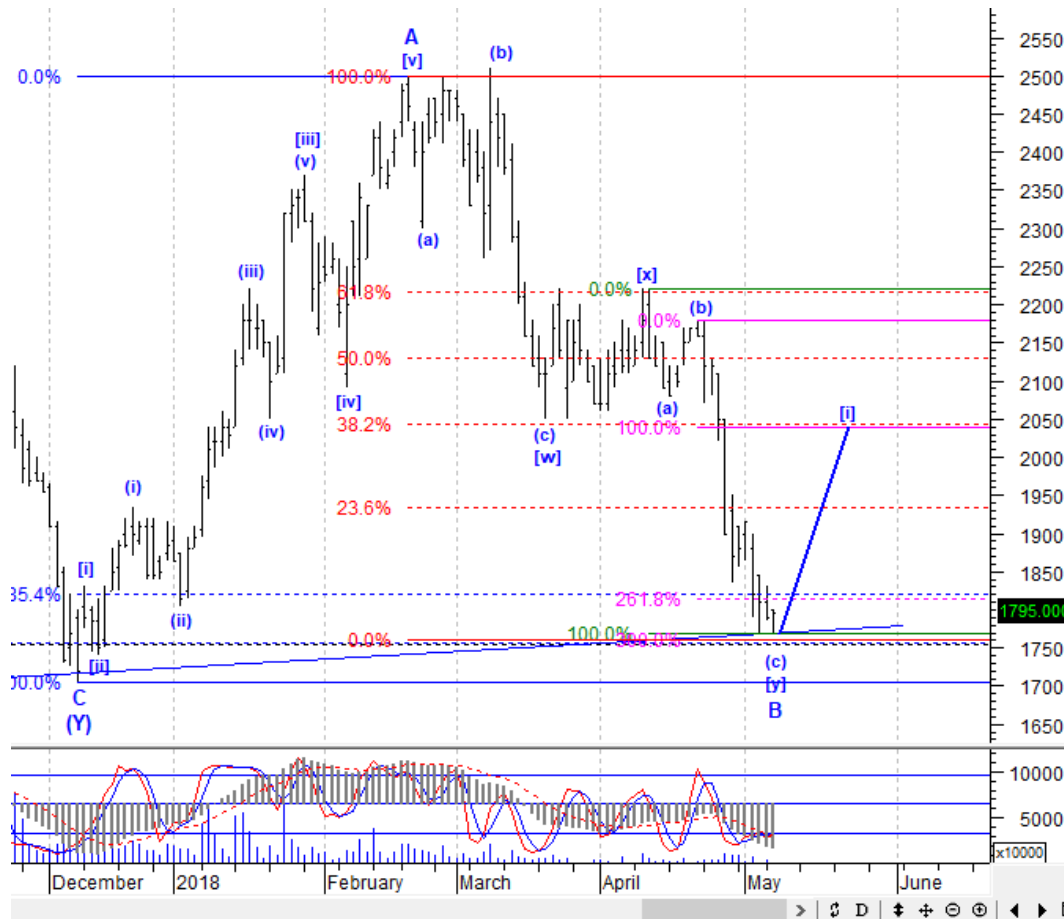
Terbentuknya *new low* dalam seminggu terakhir ini membuat IHSX akan melanjutkan gerakan turunnya hingga level 5630 sebagai target ideal wave [iv]. Setelah level tersebut tercapai, IHSX berpotensi berbalik arah menuju level 6010. Karena itu, Anda dapat melakukan akumulasi ketika IHSX sudah mendekati *bottom wave* [iv].

Support : 5690, 5630

Resisten : 5885, 6010

# Stock Recommendation for Today

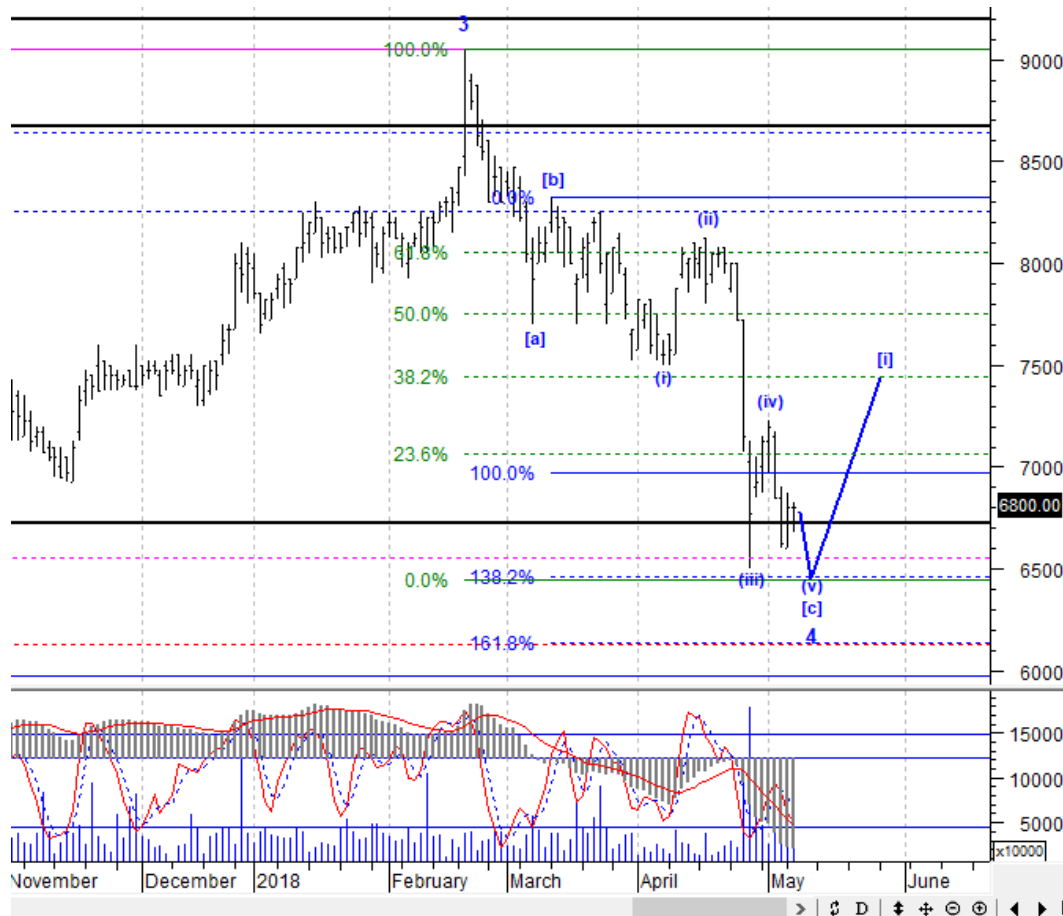
**ADHI:** Buy on Weakness - Buy area 1750-1775; TP 1930, 2040; SL break 1700



ADHI sedang mendekati area akhir wave (c) dari wave [y] di sekitar 1750-1775. Setelah wave [y] selesai, ADHI bakal naik menuju level 1930 atau bahkan level 2040. Gunakan momentum ini untuk mengambil posisi di area *bottom* tersebut.

# Stock Recommendation for Today

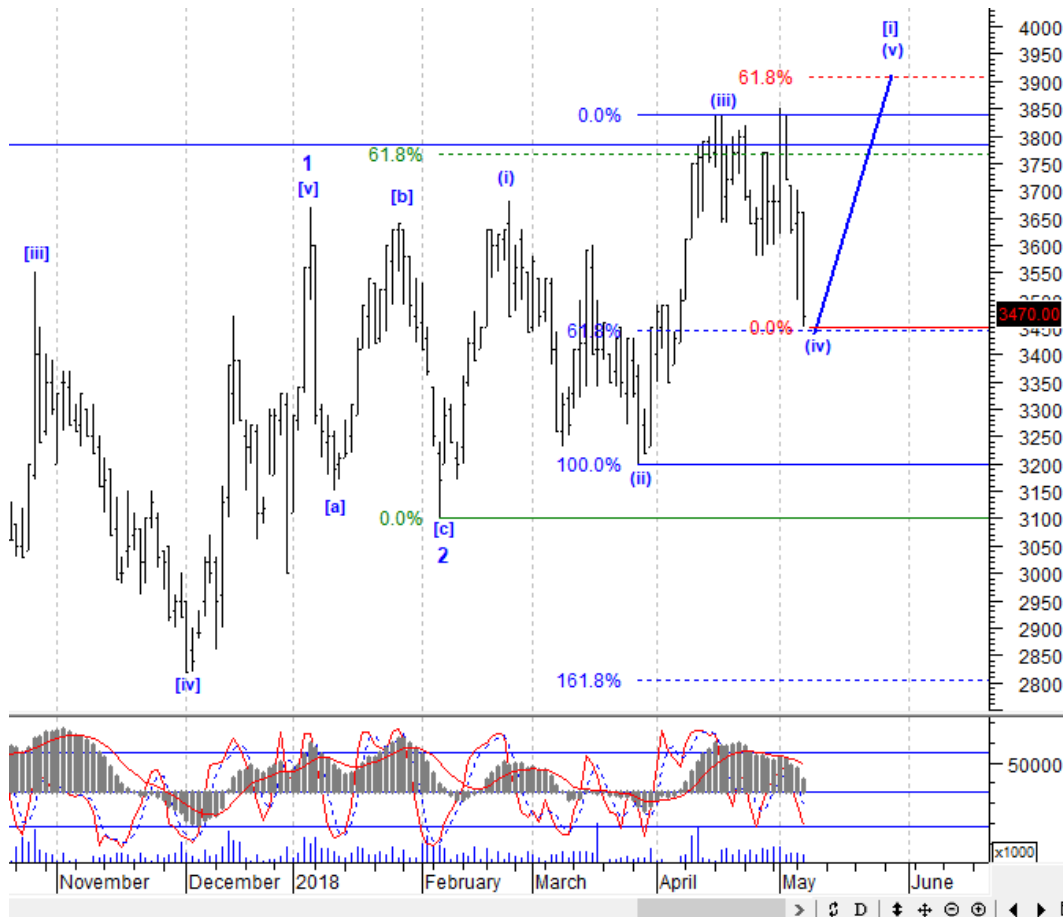
**BMRI:** Buy on Weakness - Buy area 6450-6550; TP 7100, 7450; SL break 6100



BMRI sudah berada di akhir wave (v) dari wave [c] sehingga berpotensi *rebound* ke level 7100 atau bahkan level 7450. Ketika terkoreksi ke area 6450-6550, manfaatkan kesempatan itu untuk akumulasi. Jika ternyata BMRI turun terus dan malah ditutup di bawah 6100, kurangi posisi.

# Stock Recommendation for Today

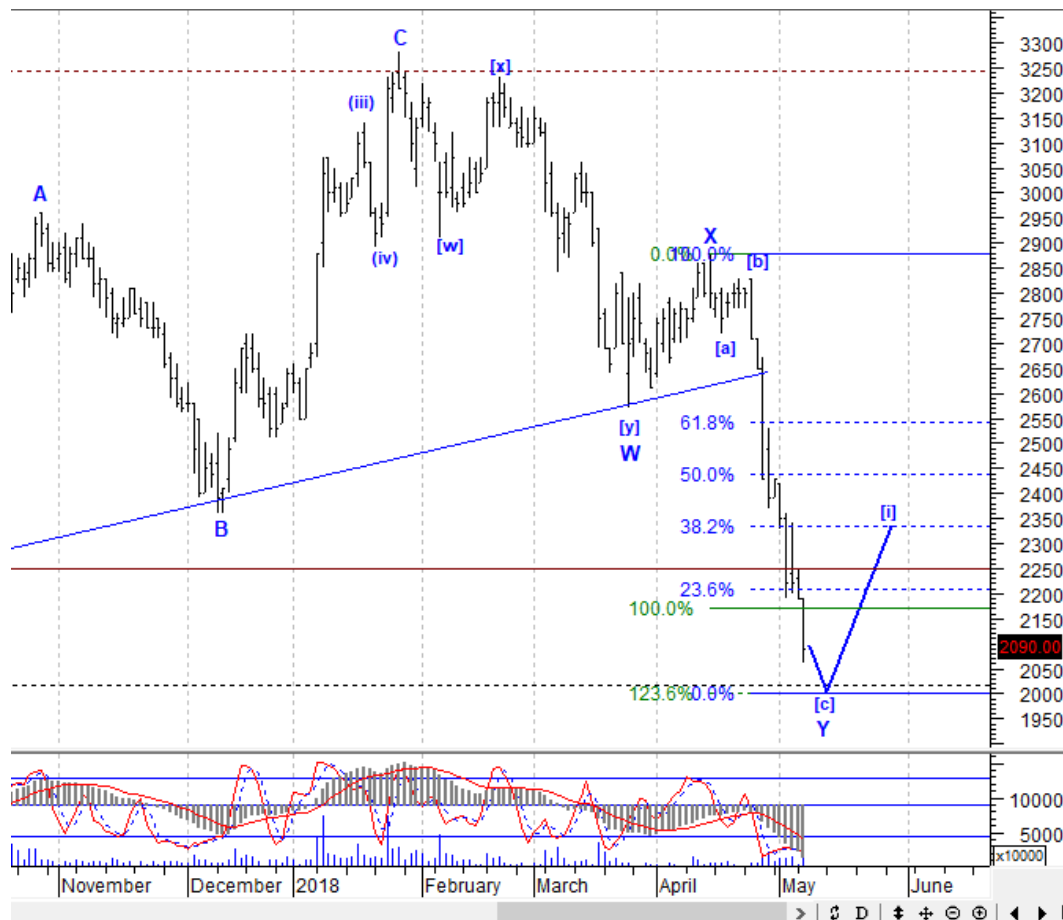
**CPIN:** *Trading Buy – Buy area 3430-3470; TP 3900; SL break 3340*



CPIN akan segera mengakhiri fase koreksi wave (iv) dari wave [i] menuju di sekitar 3430-3470. Lalu CPIN akan berbalik arah menuju level 3900 untuk memulai wave [v]. Silakan akumulasi.

# Stock Recommendation for Today

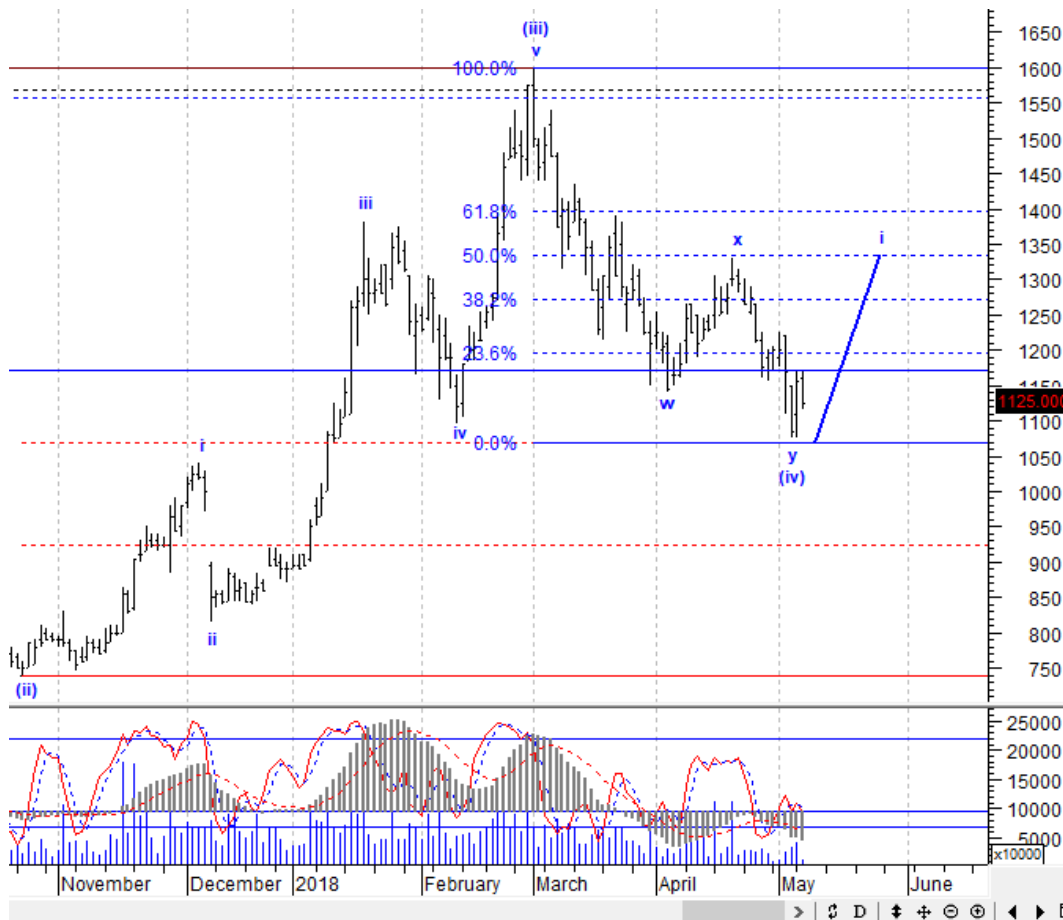
**PTPP:** Buy on Weakness - Buy area 2000-2030; TP 2210, 2330; SL break 1900



PTPP sedang mendekati akhir wave [c] dari wave Y dengan estimasi *bottom* di sekitar 2000-2030. Setelah itu, PTPP akan bergerak ke atas menuju level 2210 atau bahkan 2330. Silakan pasang antrian beli di area *bottom* tersebut.

# Stock Recommendation for Today

**MEDC:** Buy on Weakness - Buy area 1090-1100; TP 1270, 1330; SL break 1070



Tampaknya MEDC sudah memasuki awal fase naik wave i dari wave (v) menuju level 1270 atau bahkan 1330. Manfaatkan koreksi yg mungkin terjadi hari ini untuk ambil posisi di sekitar 1090-1100.



**PT NISP Sekuritas**  
**OCBC NISP Tower Lt. 21 (Head Office)**

Jl. Prof. Dr. Satrio Kav. 25  
Jakarta 12940 Indonesia  
Phone. (021) 2935 2788 (hunting)  
Fax. (021) 5794 4095  
Email: [info@nispsekuritas.com](mailto:info@nispsekuritas.com)  
Website: [www.nispsekuritas.com](http://www.nispsekuritas.com)

Branches	Address	Phone:	Fax:
Pluit Jakarta	Ruko Sentra Bisnis Blok C28 Jl. Pluit Sakti Raya No. 15 Jakarta Utara 14450	(021) 6667 5050 (hunting)	(021) 6667 5051

**Rating Definitions**

- Buy on Weakness (BoW) : We expect this stock could be bought below the last price.  
Trading Buy : We expect this stock could be bought at the last price.  
Sell on Strength (SoS) : We expect this stock could be sold above the last price.  
Trading Sell : We expect this stock could be sold at the last price.

**DISCLAIMER**

This report was produced by PT NISP Sekuritas, a member of the Indonesia Stock Exchange (IDX). The Information contained in this report has been obtained from public sources believed to be reliable and the options, analysis, forecasts, projections and expectations contained in this report are based on such information and are expressions of belief only. No representation or warranty, express or implied, is made that such information or opinion is accurate, complete or verified and it should not be relied upon as such. This report is provided solely for the information of clients of PT NISP Sekuritas who has to make their own investment decisions without reliance on this report. Neither PT NISP Sekuritas nor any officer or employee of PT NISP Sekuritas accept any liability whatsoever for any direct or consequential loss arising from any use of this report or its contents. PT NISP Sekuritas may be involved in transactions contrary to any opinions herein to make markets, or have positions in the securities recommended herein. PT NISP Sekuritas may seek or will seek investment banking or other business relationships with the companies within this report. This report is a copyright of PT NISP Sekuritas. For further information please contact our number 62-21-29352788 or fax 62-21-57944095.