

NISP Daily Elliott Wave Research

09 January 2018

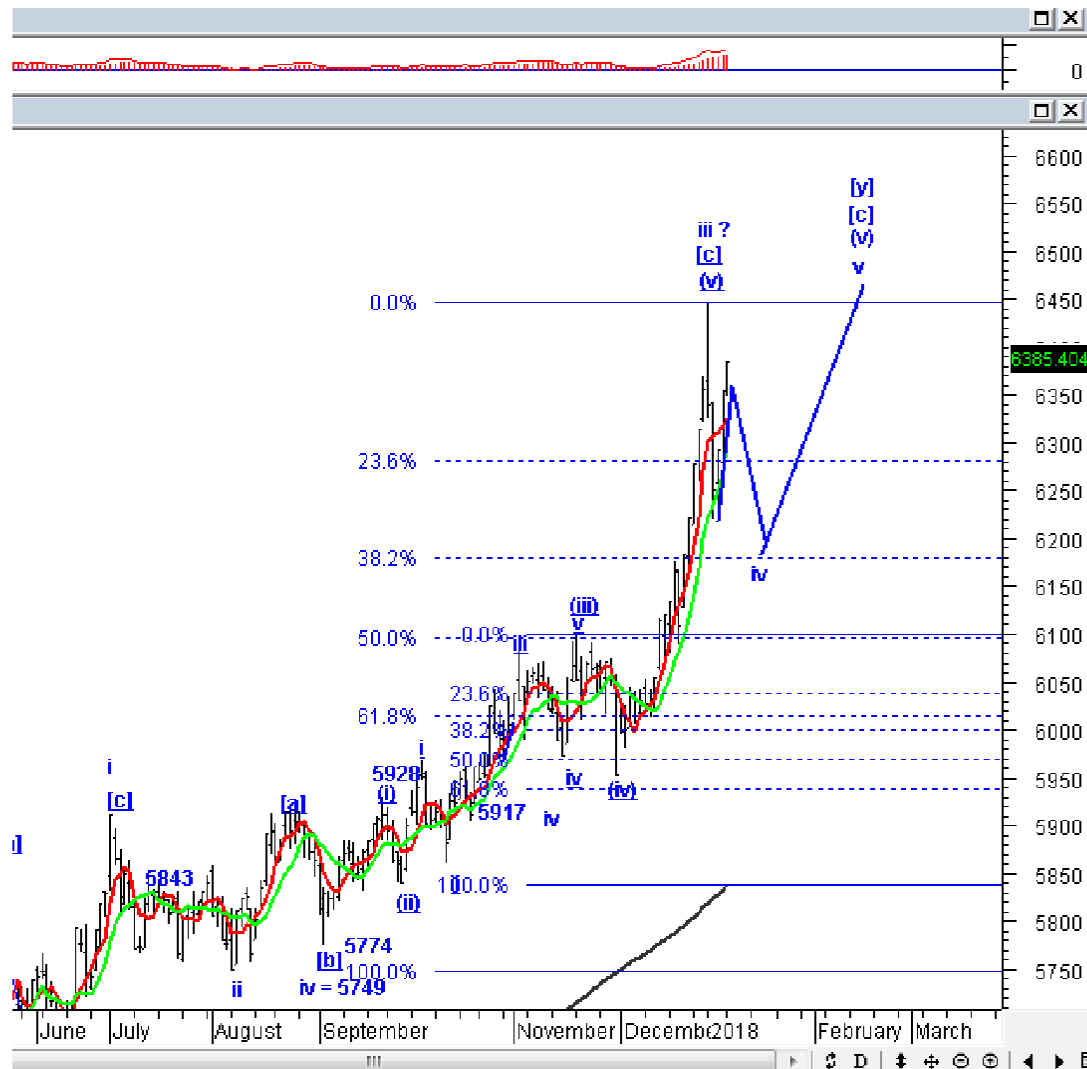


Elliottician Overview

- Jakarta Composite Index *Elliott Wave Perspective*
 - *Short Term View (1-2 days): Bullish*
- *Stocks Recommendation for Today*
 - **BEST**; *Buy on weakness – Buy area 260-266; TP 280, 310; SL break 252*
 - **SSIA**; *Buy on weakness – Buy area 510-515; TP 575, 620; SL break 498*
 - **MAPI**; *Buy on weakness – Buy area 6300-6375; TP 6900, 7350; SL break 6125*
 - **WSBP**; *Sell on strength – Sell area 430-434; Target koreksi 408-412*
 - **INAF**; *Sell on strength – Sell area 4600-4750; Target koreksi 3800, 3400*

Jakarta Composite Index

Elliott Wave Perspective

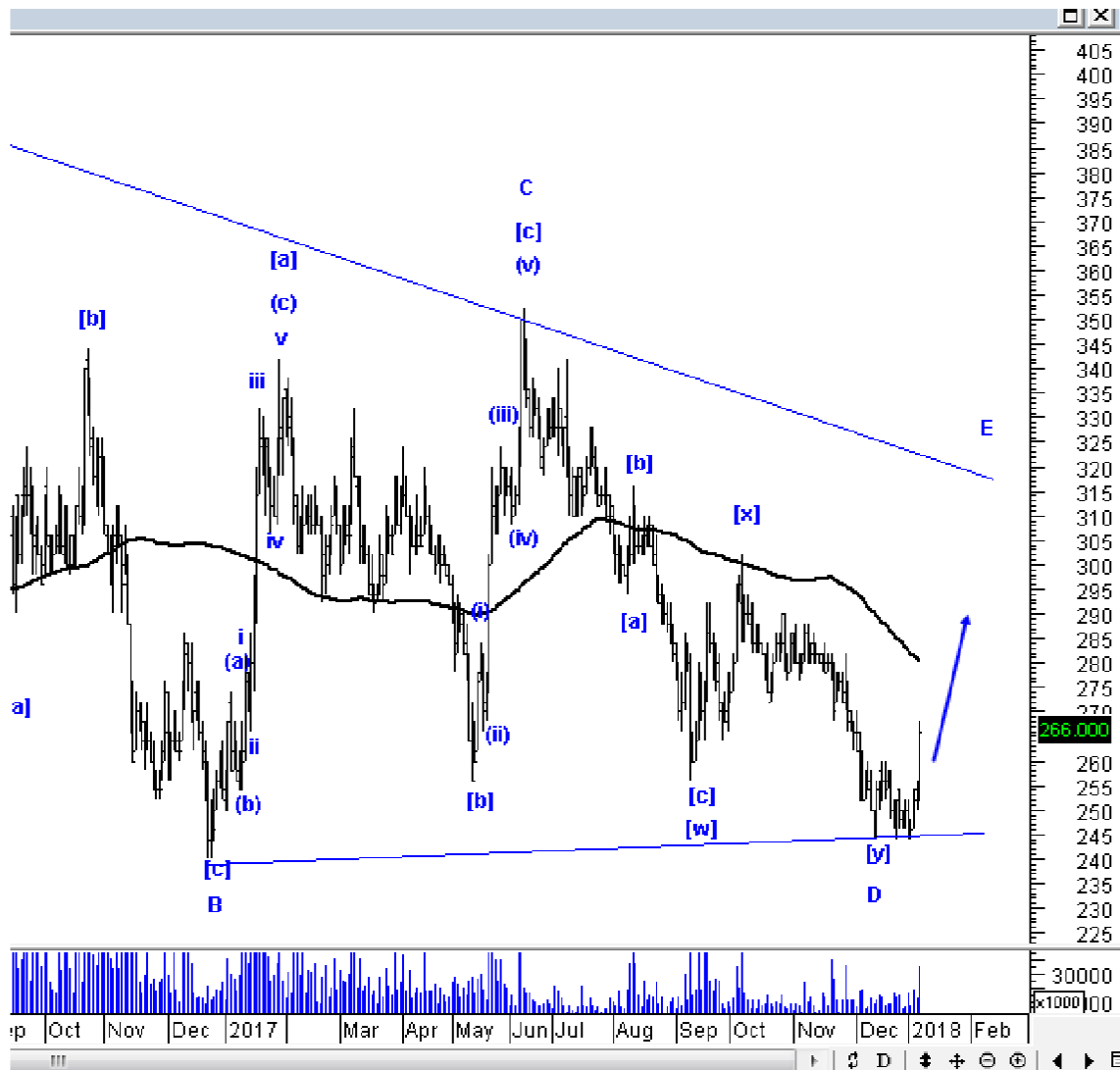


IHSG kemarin ditutup masih menguat, tetapi dengan nilai transaksi semakin terbatas, dan ditutup di level 6385. IHSG sudah terpelanting jauh dari *support* terdekatnya SMA-5 di level 6300-6324. Jika IHSG turun ke bawah 6300, IHSG ada potensi untuk kembali merosot lagi ke bawah 6200. Kami perkirakan hari ini atau besok, IHSG akan *pullback* menuju *support* MA-5 tadi.

Support : 6250-6280, 6150
Resisten : 6350-6375

Stock Recommendation for Today

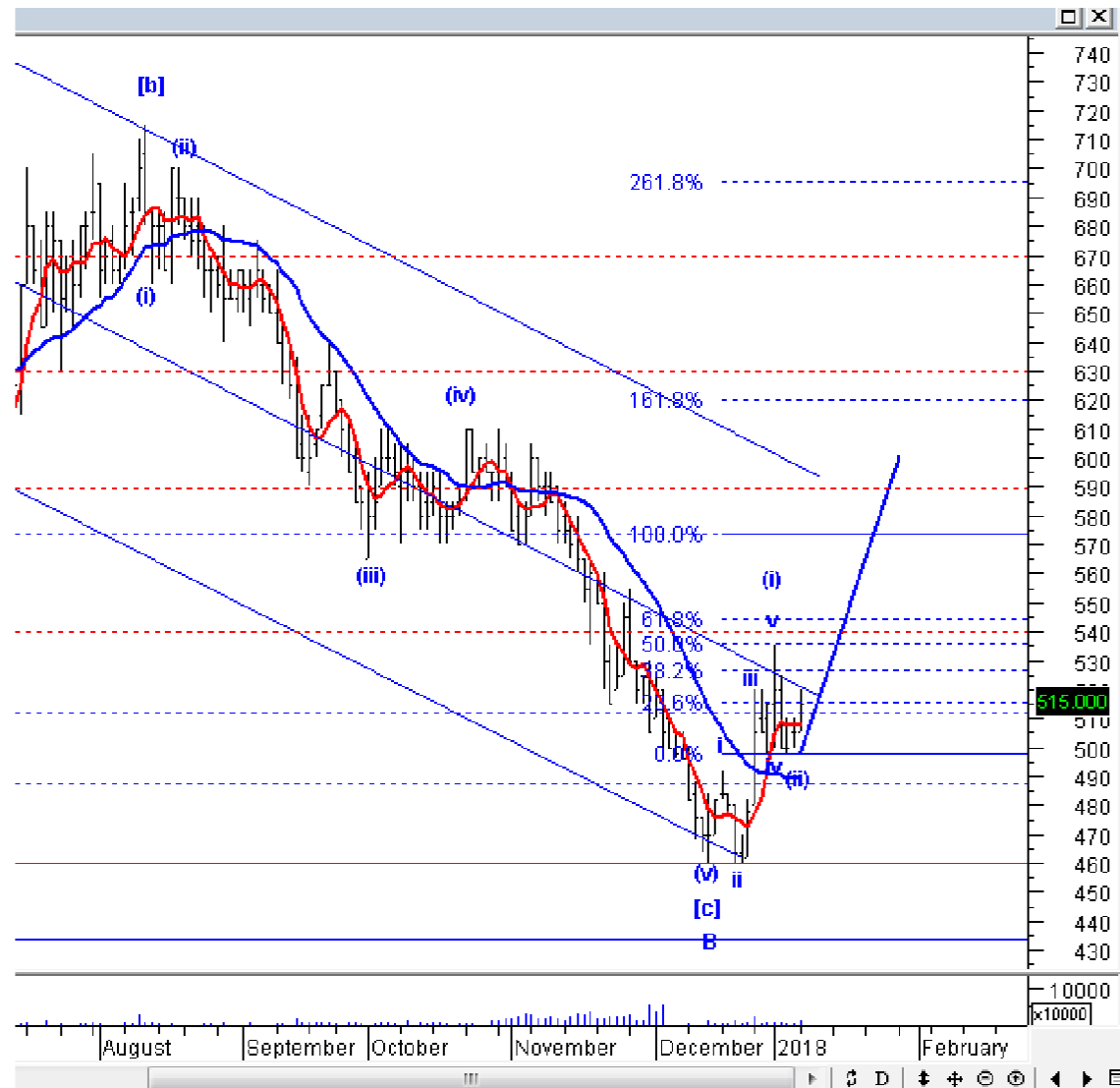
BEST: *Buy on weakness – Buy area 260-266; TP 280, 310; SL break 252*



BEST kemarin menguat dengan volume besar, ini mengkonfirmasi bahwa BEST selesai membentuk wave [y] dari wave D, dan harusnya BEST akan naik ke atas 300 lagi untuk menyelesaikan wave E.

Stock Recommendation for Today

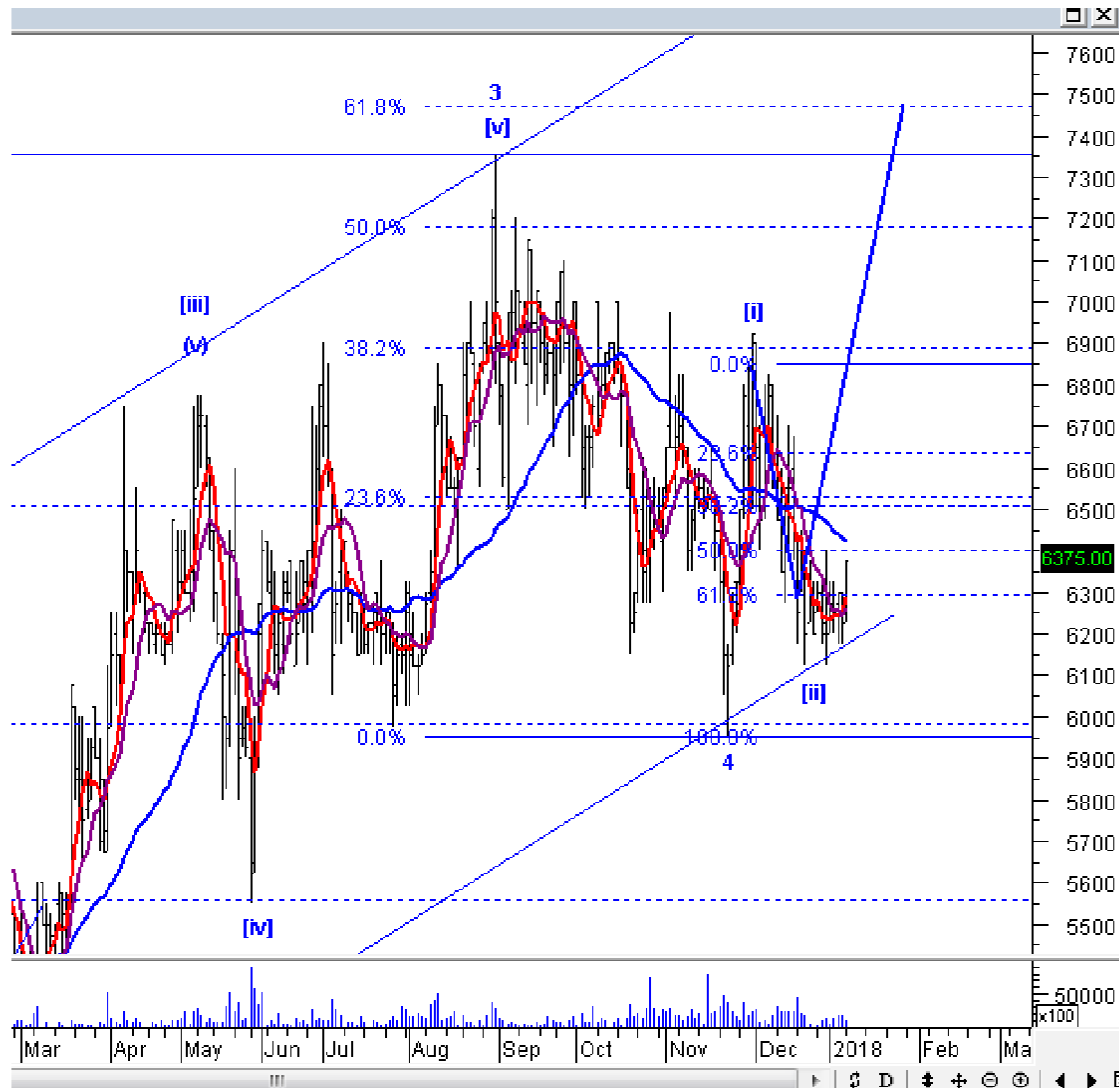
SSIA; *Buy on weakness – Buy area 510-515; TP 575, 620; SL break 498*



SSIA kemarin menguat dengan volume besar, tampaknya SSIA selesai membentuk *wave (ii)*, silakan BoW atau menambah posisi dan jaga ketat level *stoplossnya*.

Stock Recommendation for Today

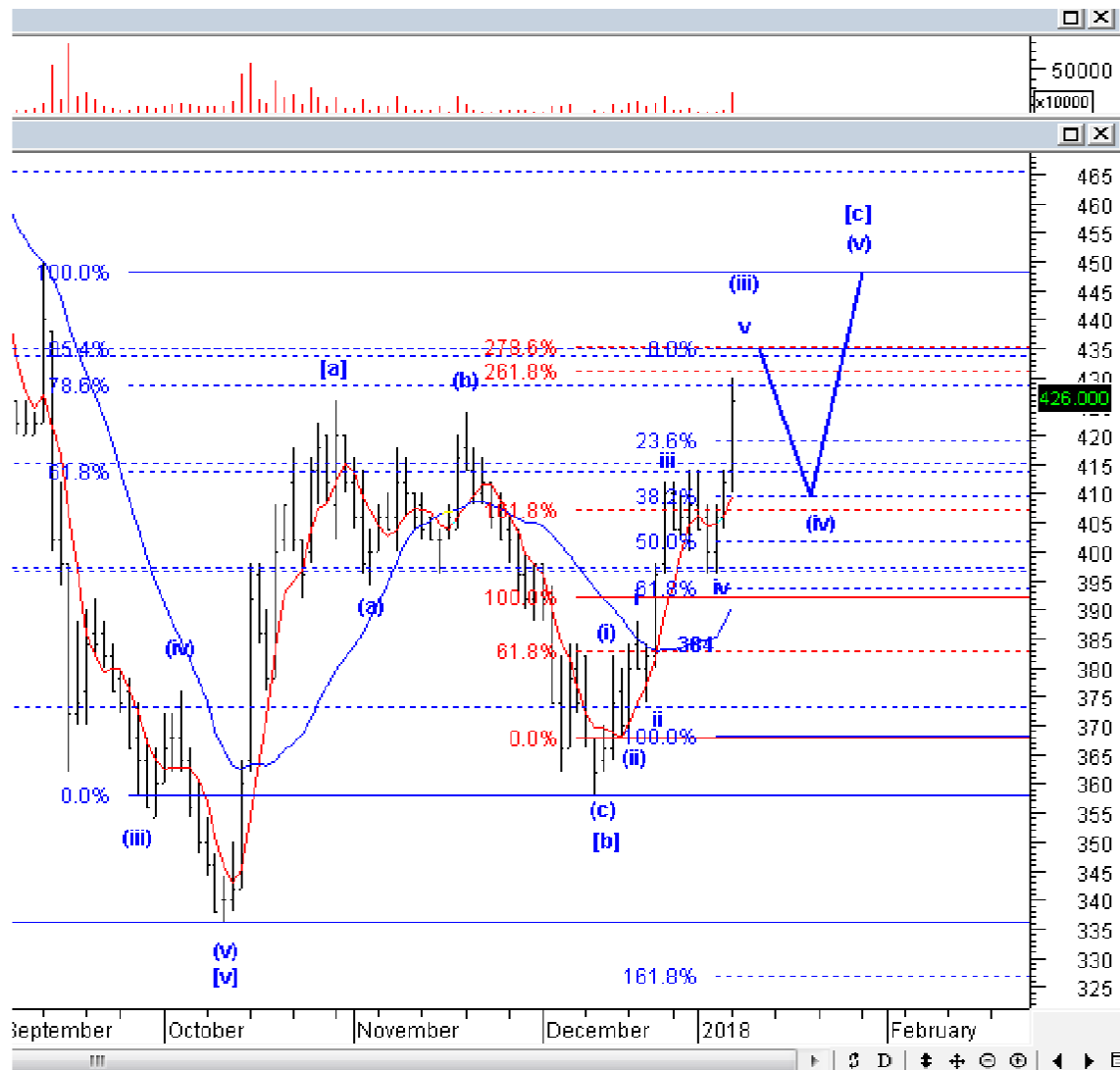
MAPI; *Buy on weakness – Buy area 6300-6375; TP 6900, 7350; SL break 6125*



MAPI kemarin menguat dengan volume besar, ini mengkonfirmasi bahwa MAPI *ontrack* selesai membentuk *wave [ii]*, dan berpeluang naik agresif. Silakan menambah posisi pada MAPI, dan menggeser level *stoplossnya* ke 6125.

Stock Recommendation for Today

WSBP: *Sell on strength – Sell area 430-434; Target koreksi 408-412*



WSBP kemarin memang menguat dengan volume besar, tetapi posisi WSBP saat ini sedang berada di akhir wave v dari wave (iii). Silakan SoS WSBP dulu, dan lakukan pembelian hanya jika target koreksi WSBP sudah tercapai.

Stock Recommendation for Today

INAF; *Sell on strength – Sell area 4600-4750; Target koreksi 3800, 3400*



INAF yang termasuk saham *thirdliner*, sangat beresiko untuk kembali turun. Kami sarankan untuk hindari INAF, dan SoS jika Anda masih memiliki INAF. INAF saat ini berpeluang *rebound* pendek untuk selesaikan wave [b], tetapi setelah itu, INAF masih akan terkoreksi lagi. Silakan SoS dan hindari INAF.

PT NISP Sekuritas
OCBC NISP Tower Lt. 21 (Head Office)
Jl. Prof. Dr. Satrio Kav. 25
Jakarta 12940 Indonesia
Phone. (021) 2935 2788 (hunting)
Fax. (021) 5794 4095
Email: info@nispsekuritas.com
Website: www.nispsekuritas.com

Branches	Address	Phone:	Fax:
Pluit Jakarta	Ruko Sentra Bisnis Blok C28 Jl. Pluit Sakti Raya No. 15 Jakarta Utara 14450	(021) 6667 5050 (hunting)	(021) 6667 5051

Rating Definitions

Buy on Weakness (BoW) : We expect this stock could be bought below the last price.
Trading Buy : We expect this stock could be bought at the last price.
Sell on Strength (SoS) : We expect this stock could be sold above the last price.
Trading Sell : We expect this stock could be sold at the last price.

DISCLAIMER

This report was produced by PT NISP Sekuritas, a member of the Indonesia Stock Exchange (IDX). The Information contained in this report has been obtained from public sources believed to be reliable and the options, analysis, forecasts, projections and expectations contained in this report are based on such information and are expressions of belief only. No representation or warranty, express or implied, is made that such information or opinion is accurate, complete or verified and it should not be relied upon as such. This report is provided solely for the information of clients of PT NISP Sekuritas who has to make their own investment decisions without reliance on this report. Neither PT NISP Sekuritas nor any officer or employee of PT NISP Sekuritas accept any liability whatsoever for any direct or consequential loss arising from any use of this report or its contents. PT NISP Sekuritas may be involved in transactions contrary to any opinions herein to make markets, or have positions in the securities recommended herein. PT NISP Sekuritas may seek or will seek investment banking or other business relationships with the companies within this report. This report is a copyright of PT NISP Sekuritas. For further information please contact our number 62-21-29352788 or fax 62-21-57944095.