

NISP Daily Elliott Wave Research

8 October 2018

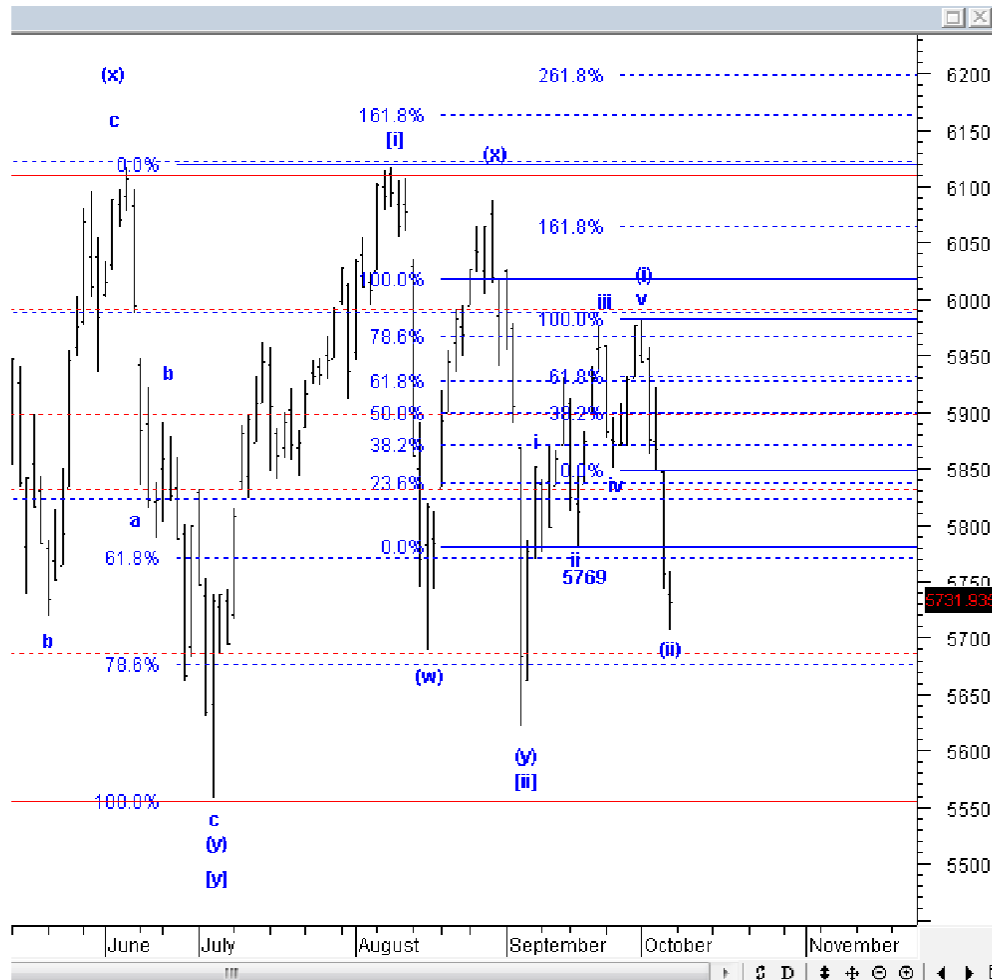


Elliottician Overview

- Jakarta Composite Index *Elliott Wave Perspective*
 - *Short Term View (1-2 days): Bullish*
- *Stocks Recommendation for Today*
 - **TLKM**; *Buy on weakness – Buy area 3440-3490, 3380-3400; TP 3780, 3920, 4100; SL 3240*
 - **MEDC**; *Buy on weakness - Buy area 950-975; TP 1090, 1150; SL 895*
 - **TBLA**; *Buy on weakness - Buy area 950-970; TP 1035, 1165, 1250; SL 900*
 - **PGAS**; *Sell on strength; Sell area 2240-2260; Downside target 2040, 1940, 1840*
 - **CPIN**; *Sell on strength; Sell area 5000-5100; Downside target 4630, 4390*

Jakarta Composite Index

Elliott Wave Perspective

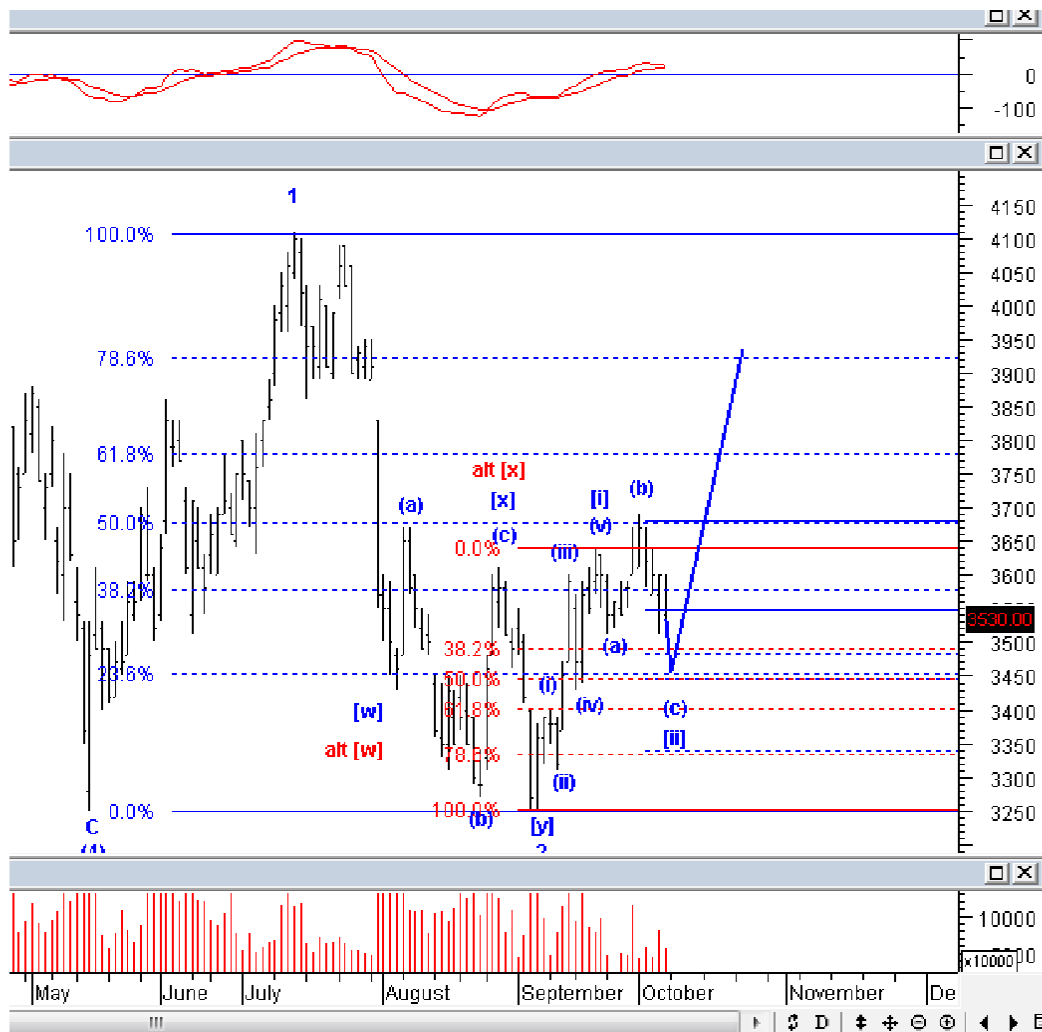


IHSG kemarin Jumat masih ditutup melemah pada level 5731, tetapi *lowest* IHSG hari Jumat sempat menyentuh 5706, artinya terlihat mulai adanya *buying power*, sehingga IHSG masih mampu ditutup dekat harga *opening* di level 5738. Harusnya minggu ini, IHSG berpotensi *rebound* lagi setidaknya ke level 5830-5850. Support ada di level 5670-5685

Support : 5670-56865
 Resisten : 5830-5850, 5900

Stock Recommendation for Today

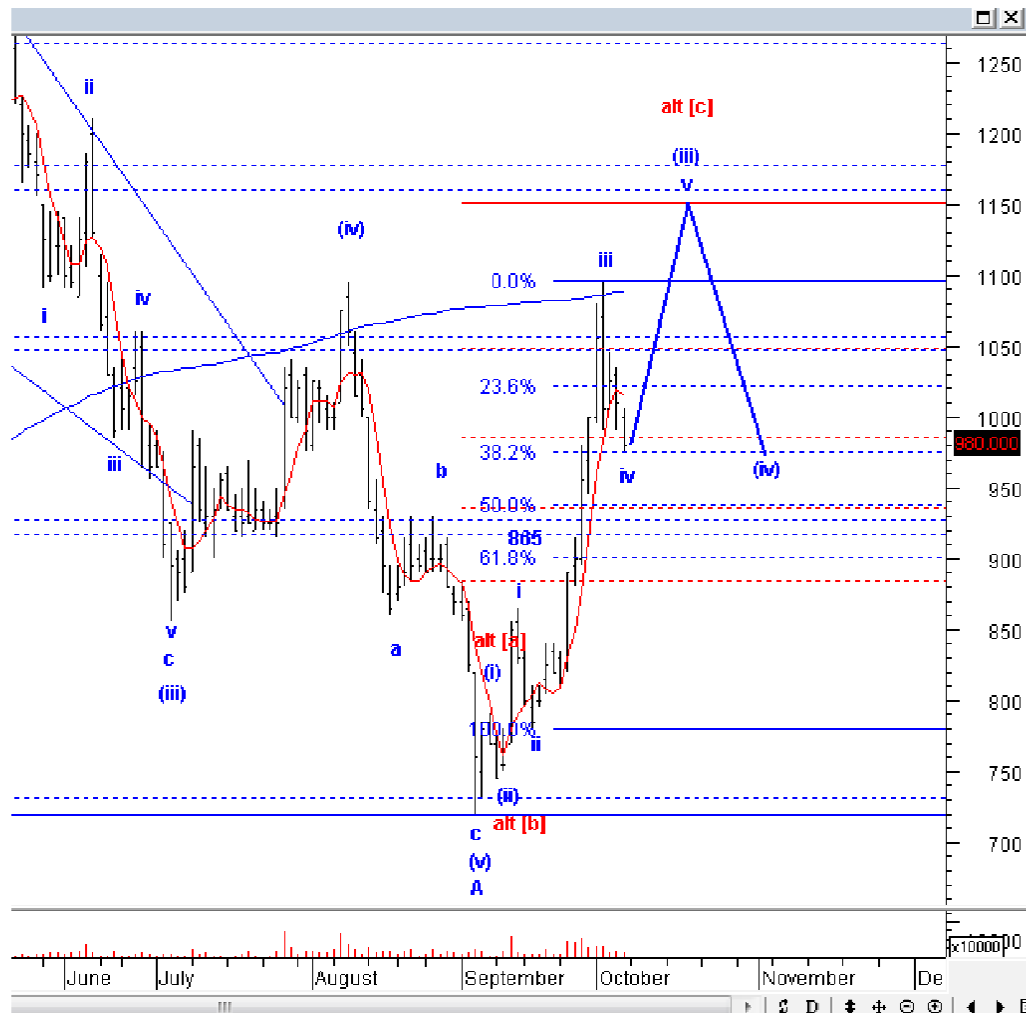
TLKM: Buy on weakness – Buy area 3440-3490, 3380-3400; TP 3780, 3920, 4100; SL 3240



TLKM masih belum selesai koreksi, dan masih akan melanjutkan pelemahan dari wave (c) dari wave [ii]. Tetapi, downside TLKM idealnya hanya di level 3440-3490, dan maksimal di 3380-3400. Oleh karena itu, kami rekomendasikan BoW TLKM jika TLKM turun ke area beli itu, lakukan pembelian bertahap, sehingga jika TLKM mengalami overshoot hingga 3380-3400, Anda masih ada dana untuk menambah posisi atau averaging down.

Stock Recommendation for Today

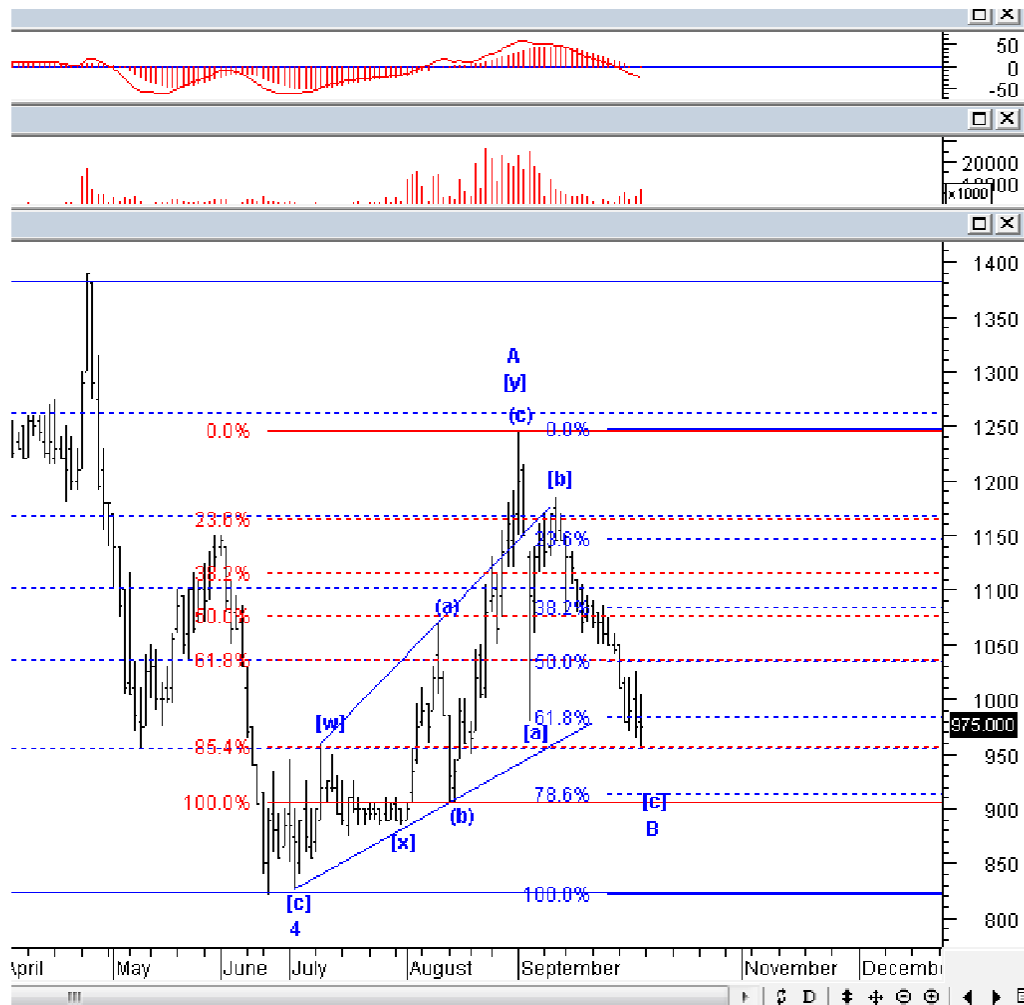
MEDC: Buy on weakness - Buy area 950-975; TP 1090, 1150; SL 895



MEDC kami rekomendasikan beli setelah minggu lalu kami rekomendasikan SoS, karena MEDC sudah mencapai target koreksi minimal dari wave iv. Silakan mulai lakukan akumulasi beli, dan batasi resiko jika MEDC turun ke bawah level 895.

Stock Recommendation for Today

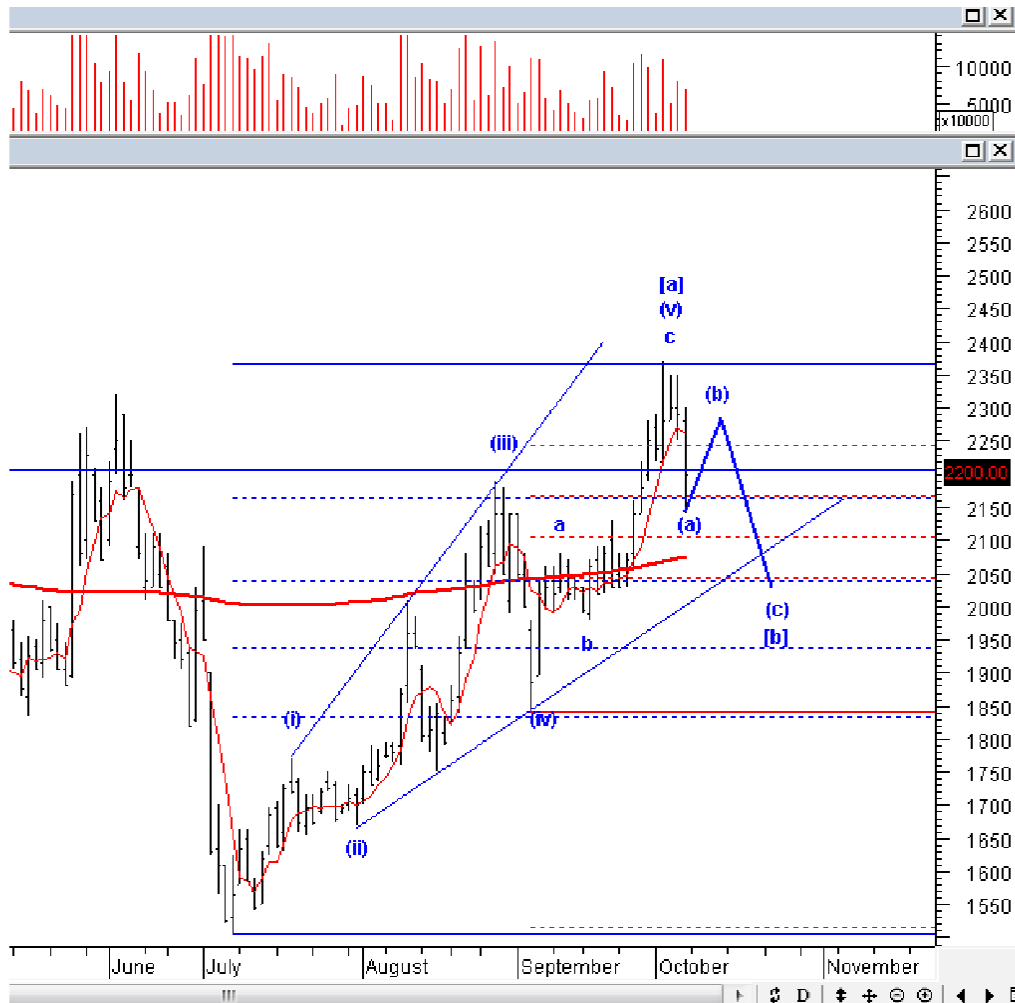
TBLA: *Buy on weakness - Buy area 950-970; TP 1035, 1165, 1250; SL 900*



TBLA masih kami rekomendasikan BoW, meskipun kemarin masih terkoreksi, harusnya *downside* TBLA tidak lebih rendah dari 900. Silakan BoW TBLA secara bertahap.

Stock Recommendation for Today

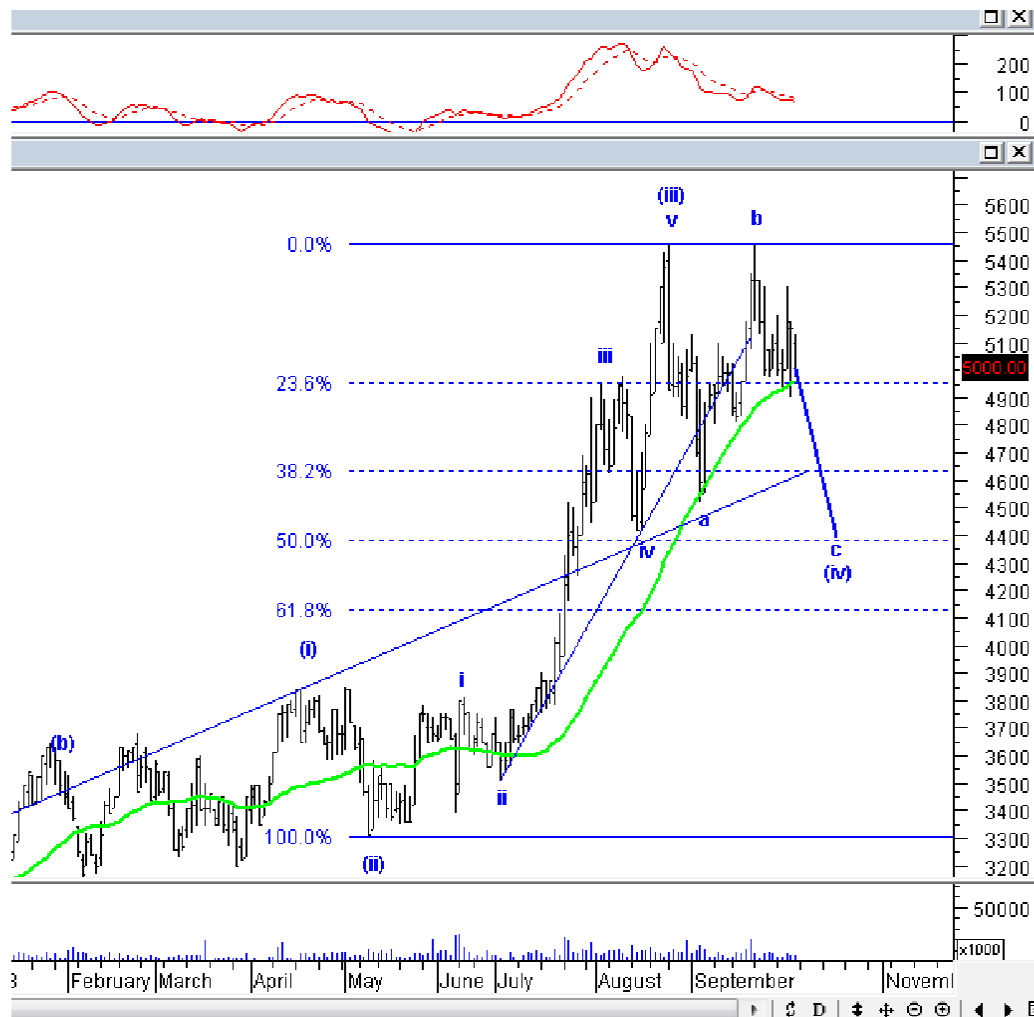
PGAS: *Sell on strength; Sell area 2240-2260; Downside target 2040, 1940, 1840*



PGAS harusnya pagi ini akan *rebound* pendek dan membentuk *wave (b)* dari *wave [b]*, setelah itu, PGAS akan lanjut terkoreksi lagi menuju 2040. Silakan SoS PGAS jika PGAS *rebound* ke area jual kami.

Stock Recommendation for Today

CPIN: *Sell on strength; Sell area 5000-5100; Downside target 4630, 4390*



CPIN kemarin Jumat terkoreksi dan volume terlihat mulai meningkat, jika CPIN turun ke bawah 4900, CPIN konfirm berada di wave c dari wave (iv), dengan pola *flat correction*. Silakan SoS CPIN.

PT NISP Sekuritas
OCBC NISP Tower Lt. 21 (Head Office)
Jl. Prof. Dr. Satrio Kav. 25
Jakarta 12940 Indonesia
Phone. (021) 2935 2788 (hunting)
Fax. (021) 5794 4095
Email: info@nispsekuritas.com
Website: www.nispsekuritas.com

Branches	Address	Phone:	Fax:
Pluit Jakarta	Ruko Sentra Bisnis Blok C28 Jl. Pluit Sakti Raya No. 15 Jakarta Utara 14450	(021) 6667 5050 (hunting)	(021) 6667 5051

Rating Definitions

- Buy on Weakness (BoW) : We expect this stock could be bought below the last price.
Trading Buy : We expect this stock could be bought at the last price.
Sell on Strength (SoS) : We expect this stock could be sold above the last price.
Trading Sell : We expect this stock could be sold at the last price.

DISCLAIMER

This report was produced by PT NISP Sekuritas, a member of the Indonesia Stock Exchange (IDX). The Information contained in this report has been obtained from public sources believed to be reliable and the options, analysis, forecasts, projections and expectations contained in this report are based on such information and are expressions of belief only. No representation or warranty, express or implied, is made that such information or opinion is accurate, complete or verified and it should not be relied upon as such. This report is provided solely for the information of clients of PT NISP Sekuritas who has to make their own investment decisions without reliance on this report. Neither PT NISP Sekuritas nor any officer or employee of PT NISP Sekuritas accept any liability whatsoever for any direct or consequential loss arising from any use of this report or its contents. PT NISP Sekuritas may be involved in transactions contrary to any opinions herein to make markets, or have positions in the securities recommended herein. PT NISP Sekuritas may seek or will seek investment banking or other business relationships with the companies within this report. This report is a copyright of PT NISP Sekuritas. For further information please contact our number 62-21-29352788 or fax 62-21-57944095.