

NISP Daily Elliott Wave Research

07 September 2017

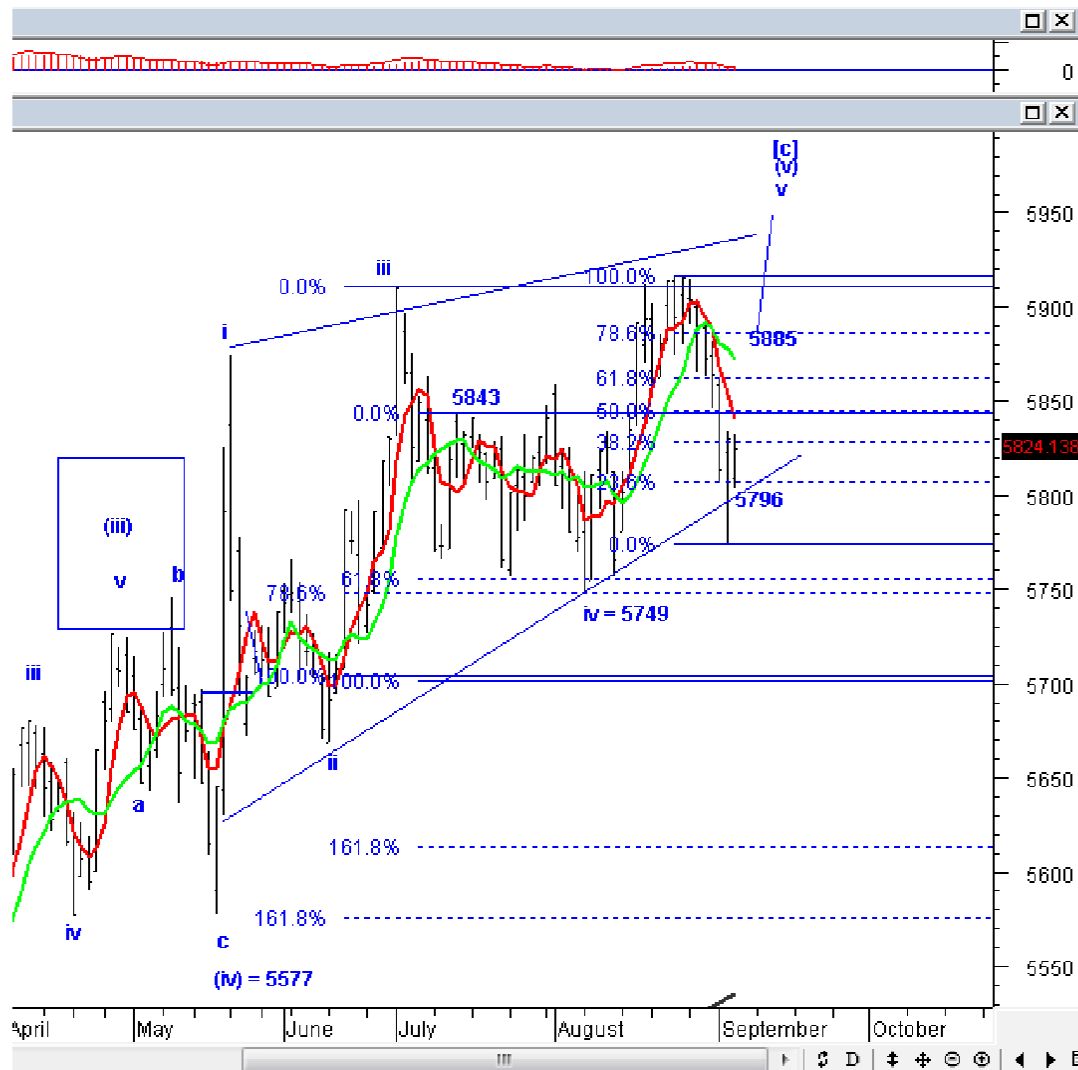


Elliottician Overview

- Jakarta Composite Index *Elliott Wave Perspective*
 - *Short Term View (1-2 days): Bearish*
- *Stocks Recommendation for Today*
 - **SMGR**; Buy on weakness – Buy area 9600-9700; TP 9900, 10150; SL break 9500
 - **SIMP**; Buy on weakness – Buy area 495-500; TP 540, 565; SL break 480
 - **LSIP**; Add position – Buy area 1350-1360; TP 1540, 1565, 1610; SL break 1330
 - **PTBA**; Sell on strength – Sell area 12300-12400; Target koreksi 11200-11300
 - **ITMG**; Sell on strength – Sell area 51000-51500; Target koreksi 46000

Jakarta Composite Index

Elliott Wave Perspective



Selamat pagi, IHSG kemarin berhasil ditutup menguat, secara *candlestick*, karena IHSG kemarin dibuka *gap down* di level 5809, dan akhirnya ditutup di level 5824. Seharusnya, IHSG masih dapat menguat untuk menguji resisten MA-5 di level 5840, jika IHSG berhasil *break level* ini, resisten berikutnya di 5870. Kami tetap rekomendasikan rekan-rekan untuk mulai memperbanyak *cash*. Penggunaan penguatan yang mungkin terjadi 1-2 hari ke depan untuk banyak melakukan penjualan di saham-saham *bluechip*, terutama yang sudah *break even* ataupun sudah *profit*.

Support : 5750, 5642

Resisten : 5950

Stock Recommendation for Today

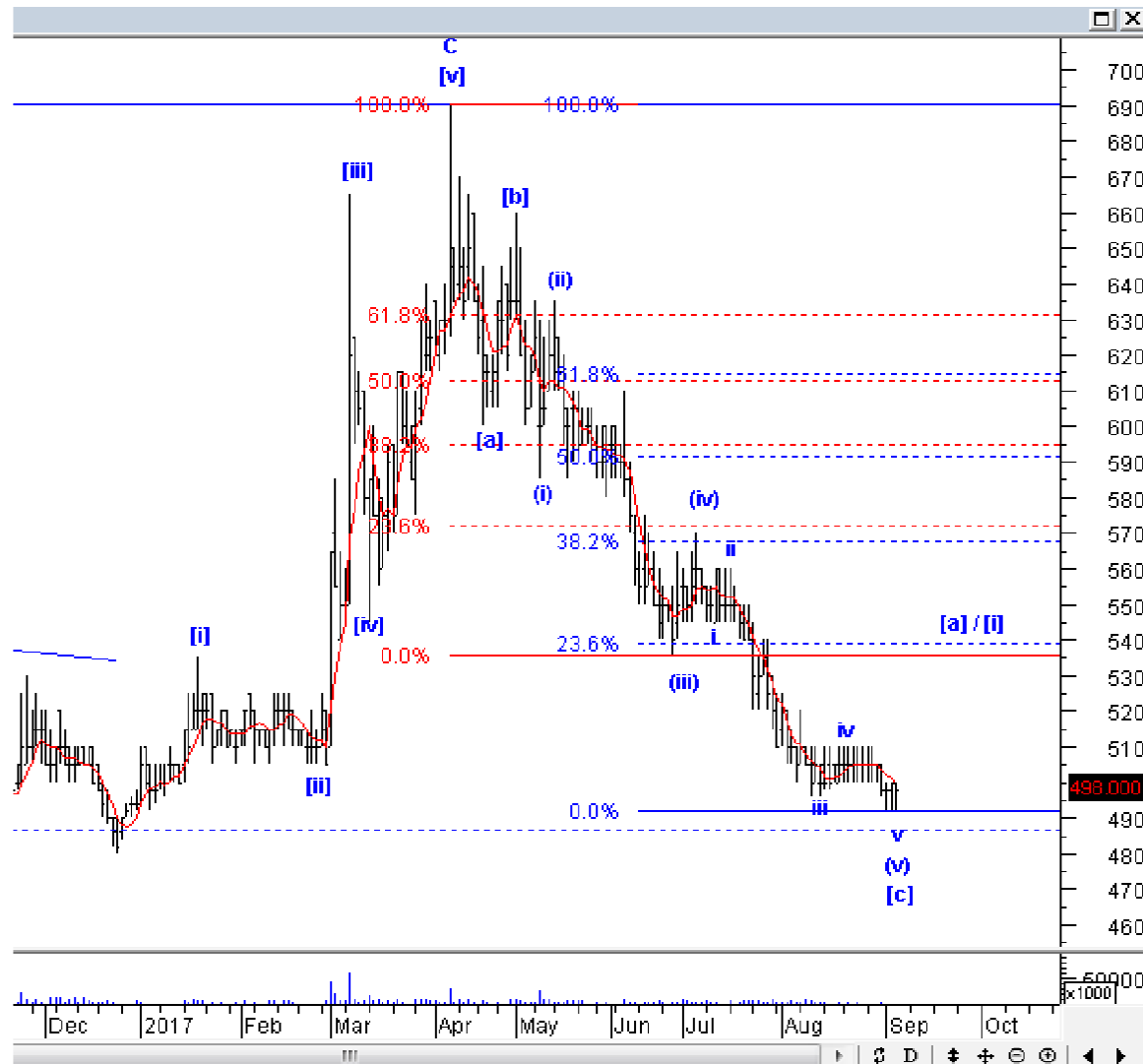
SMGR: Buy on weakness – Buy area 9600-9700; TP 9900, 10150; SL break 9500



SMGR sejak awal Agustus sudah mulai kami rekomendasikan SoS, dan kami melihat bahwa penurunan yang terjadi kemarin sudah melebihi target ideal wave (a)/(i), sehingga, menurut kami, *overshoot* yang terjadi menjadi peluang untuk melakukan *buy on weakness*, karena *downside wave* (a) sudah sangat terbatas. Silakan lakukan *buyback* jika Anda pernah menjual SMGR sewaktu kami rekomendasikan SoS dulu. Anda dapat melakukan *profit taking* lagi ketika wave (b) sudah selesai terbentuk.

Stock Recommendation for Today

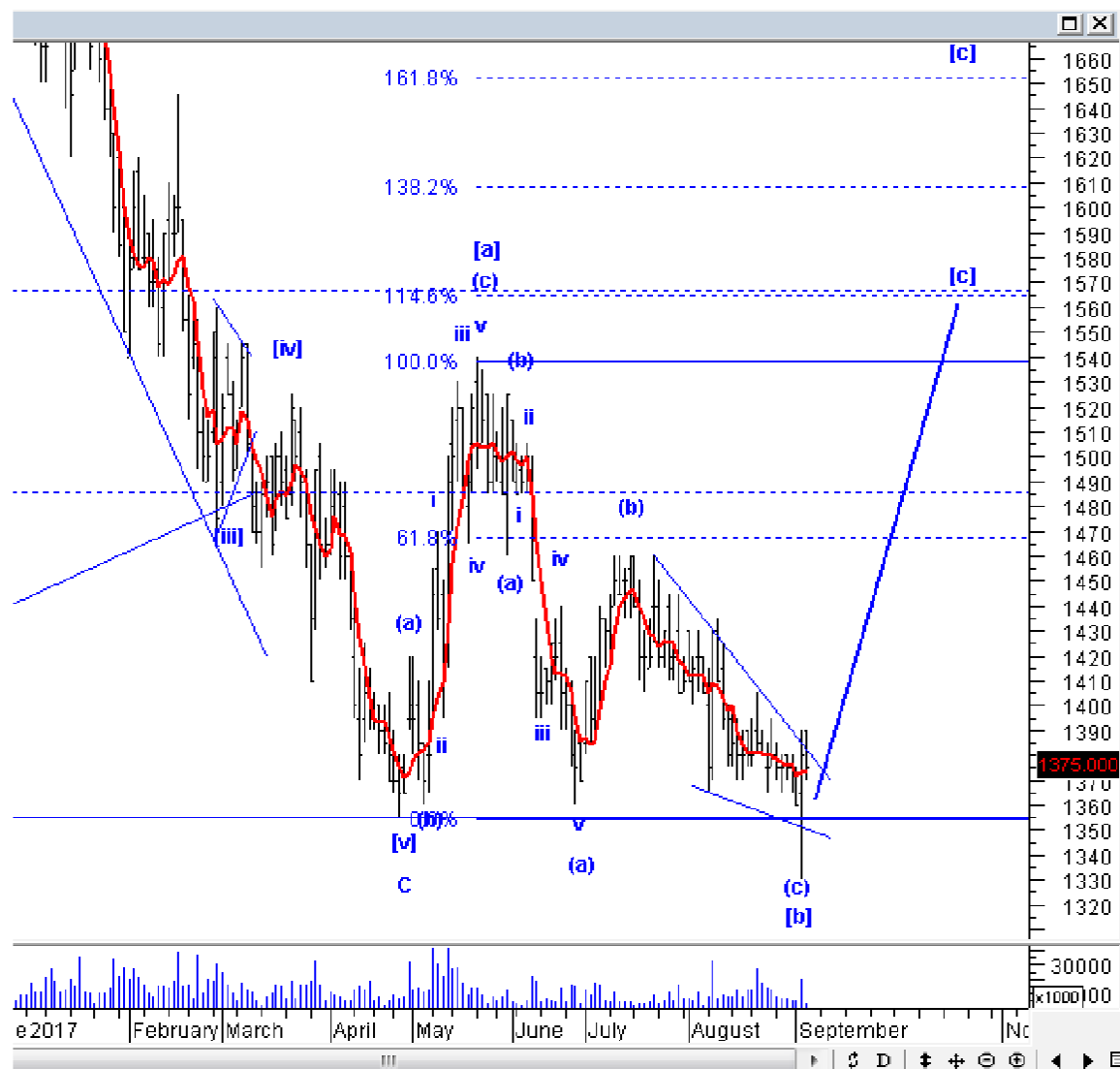
SIMP; *Buy on weakness – Buy area 495-500; TP 540, 565; SL break 480*



SIMP harusnya sudah berada di akhir wave v dari wave (v) dari wave [c]. Silakan BoW SIMP, idealnya SIMP akan segera menguat agresif. Silakan menambah posisi pula jika nanti SIMP berhasil *break* resisten 515.

Stock Recommendation for Today

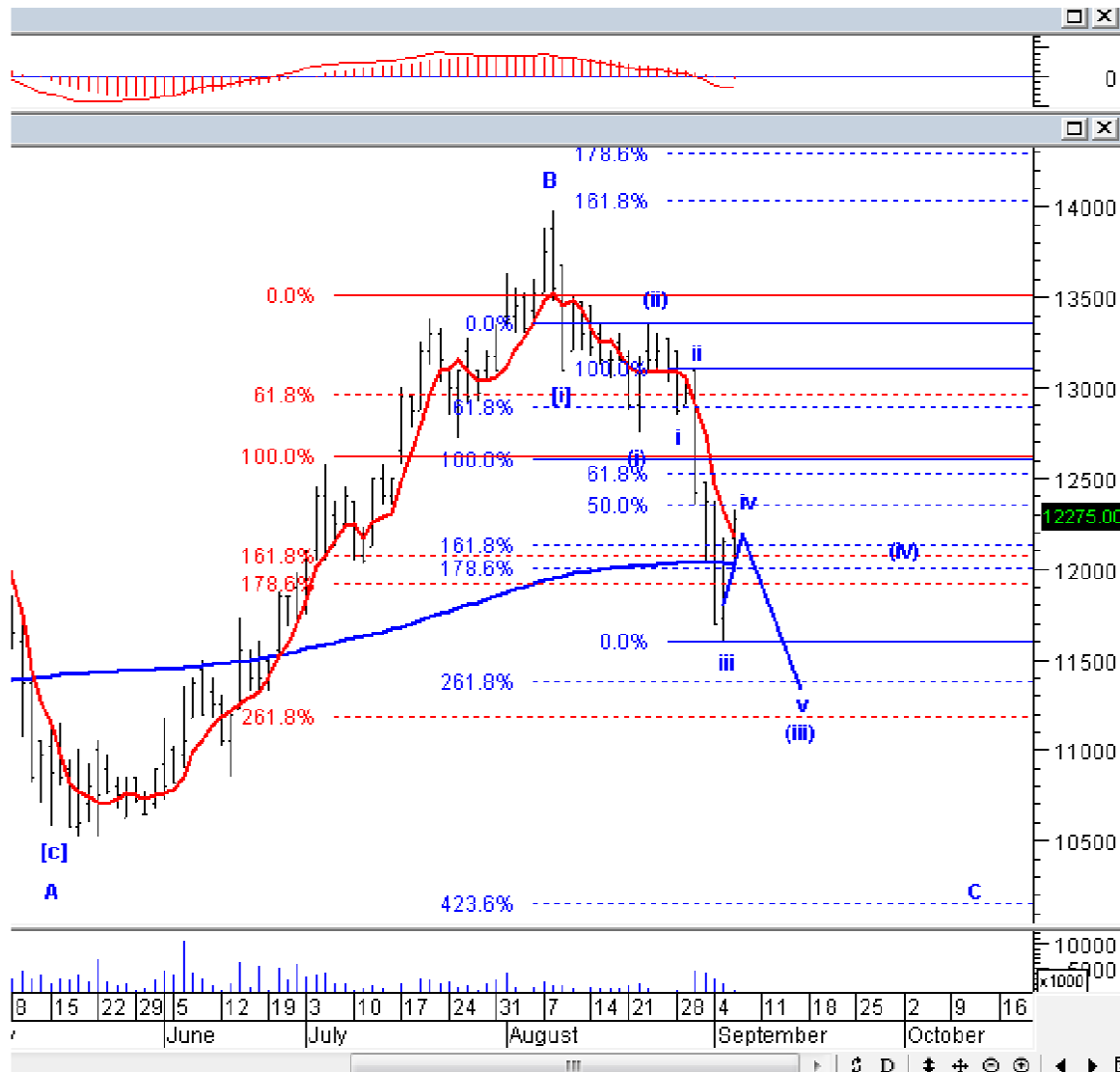
LSIP; Add position – Buy area 1350-1360; TP 1540, 1565, 1610; SL break 1330



LSIP kemarin terkoreksi wajar, harusnya LSIP sudah berada di wave [c]. Silakan menambah posisi pada LSIP.

Stock Recommendation for Today

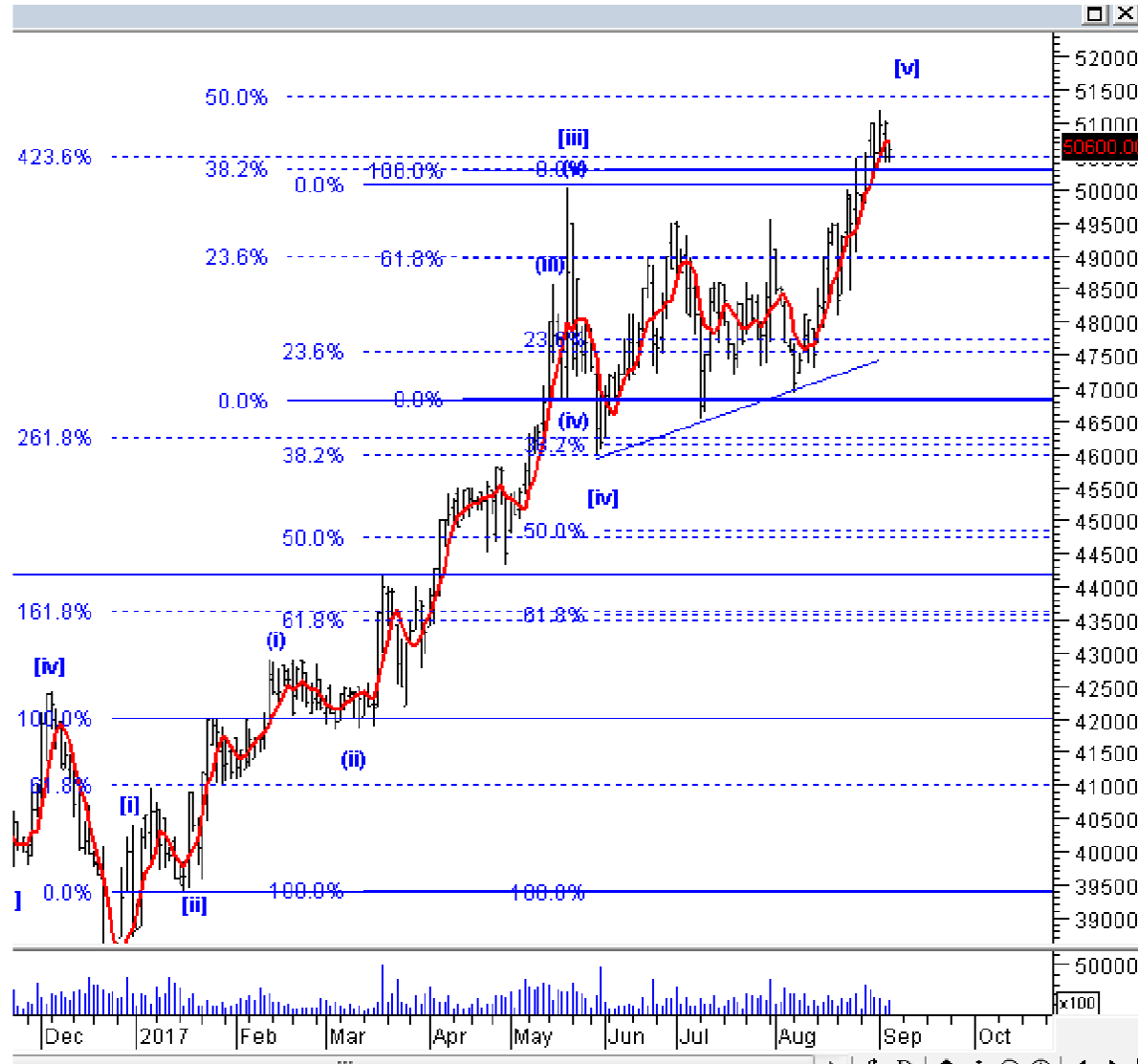
PTBA: *Sell on strength – Sell area 12300-12400; Target koreksi 11200-11300*



Penguatan yang terjadi pada PTBA kemarin masih bagian dari wave iv, idealnya, PTBA akan kembali terkoreksi lagi. Tetap SoS jika PTBA hari ini menguat.

Stock Recommendation for Today

UNVR; *Sell on strength – Sell area 51000-51500; Target koreksi 46000*



Meskipun target ideal UNVR belum tercapai (51500), tetapi, posisi UNVR saat ini sudah berada di akhir wave [v], oleh karena itu, kami mulai rekomendasikan SoS UNVR jika UNVR kembali menguat lagi ke 51000 atau di atas itu.

PT NISP Sekuritas
OCBC NISP Tower Lt. 21 (Head Office)
Jl. Prof. Dr. Satrio Kav. 25
Jakarta 12940 Indonesia
Phone. (021) 2935 2788 (hunting)
Fax. (021) 5794 4095
Email: info@nispsekuritas.com
Website: www.nispsekuritas.com

Branches	Address	Phone:	Fax:
Pluit Jakarta	Ruko Sentra Bisnis Blok C28 Jl. Pluit Sakti Raya No. 15 Jakarta Utara 14450	(021) 6667 5050 (hunting)	(021) 6667 5051

Rating Definitions

Buy on Weakness (BoW) : We expect this stock could be bought below the last price.
Trading Buy : We expect this stock could be bought at the last price.
Sell on Strength (SoS) : We expect this stock could be sold above the last price.
Trading Sell : We expect this stock could be sold at the last price.

DISCLAIMER

This report was produced by PT NISP Sekuritas, a member of the Indonesia Stock Exchange (IDX). The Information contained in this report has been obtained from public sources believed to be reliable and the options, analysis, forecasts, projections and expectations contained in this report are based on such information and are expressions of belief only. No representation or warranty, express or implied, is made that such information or opinion is accurate, complete or verified and it should not be relied upon as such. This report is provided solely for the information of clients of PT NISP Sekuritas who has to make their own investment decisions without reliance on this report. Neither PT NISP Sekuritas nor any officer or employee of PT NISP Sekuritas accept any liability whatsoever for any direct or consequential loss arising from any use of this report or its contents. PT NISP Sekuritas may be involved in transactions contrary to any opinions herein to make markets, or have positions in the securities recommended herein. PT NISP Sekuritas may seek or will seek investment banking or other business relationships with the companies within this report. This report is a copyright of PT NISP Sekuritas. For further information please contact our number 62-21-29352788 or fax 62-21-57944095.