

# ***NISP Daily Elliott Wave Research***

7 August 2018

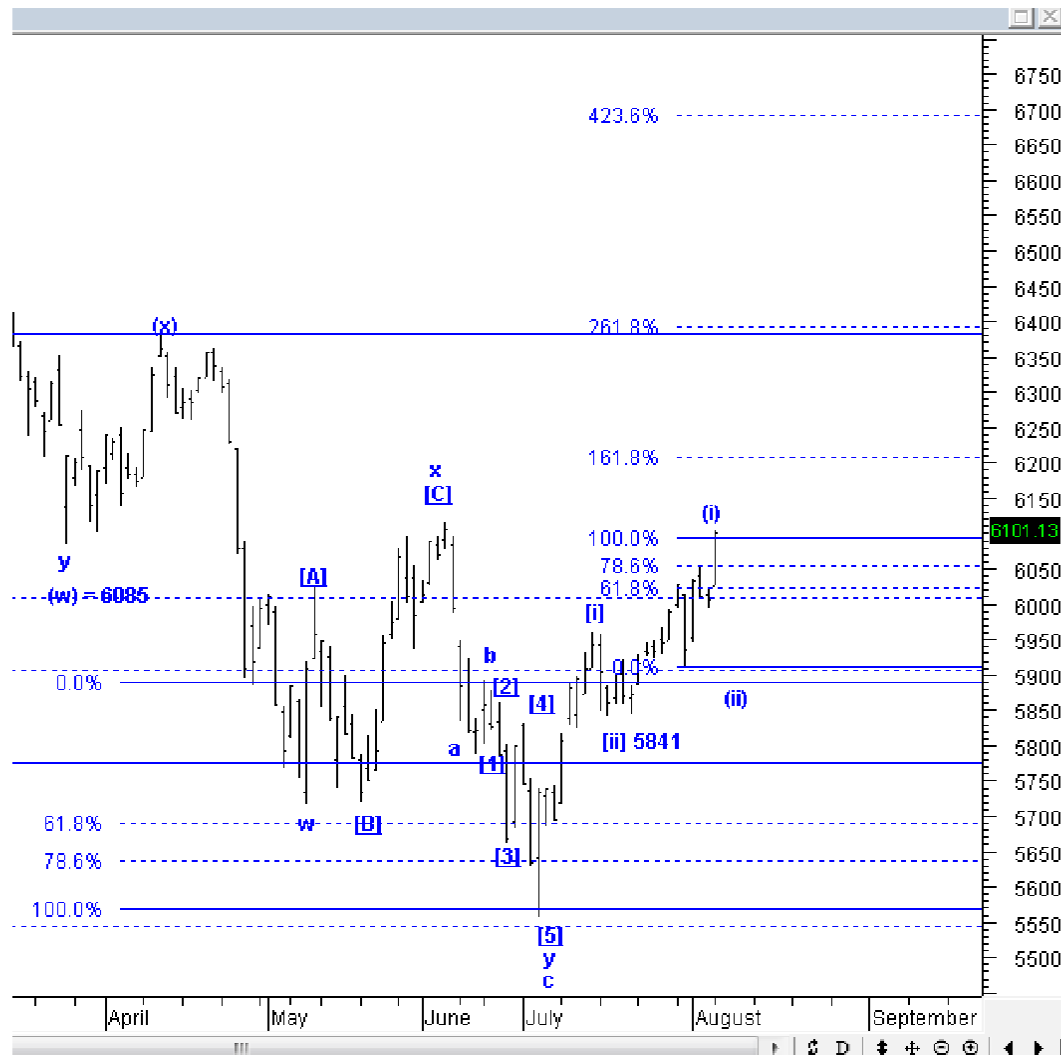


# Elliottician Overview

- Jakarta Composite Index *Elliott Wave Perspective*
  - *Short Term View (1-2 days): Bullish*
- *Stocks Recommendation for Today*
  - **SCMA**; *Buy on weakness – Buy area 2050-2100; TP 2320, 2380; SL 2030*
  - **HRUM**; *Buy on weakness – Buy 2800-2810; TP 3200, 3350, 3400; SL 2750*
  - **MEDC**; *Buy on weakness – Buy area 980-1000; TP 1050, 1120-1140; SL break 975*
  - **BMRI**; *Take profit – Sell area 7350-7450; Downside target 7000*
  - **ELSA**; *Take profit – Sell area 394-396; Downside target 360, 344*

# Jakarta Composite Index

## Elliott Wave Perspective



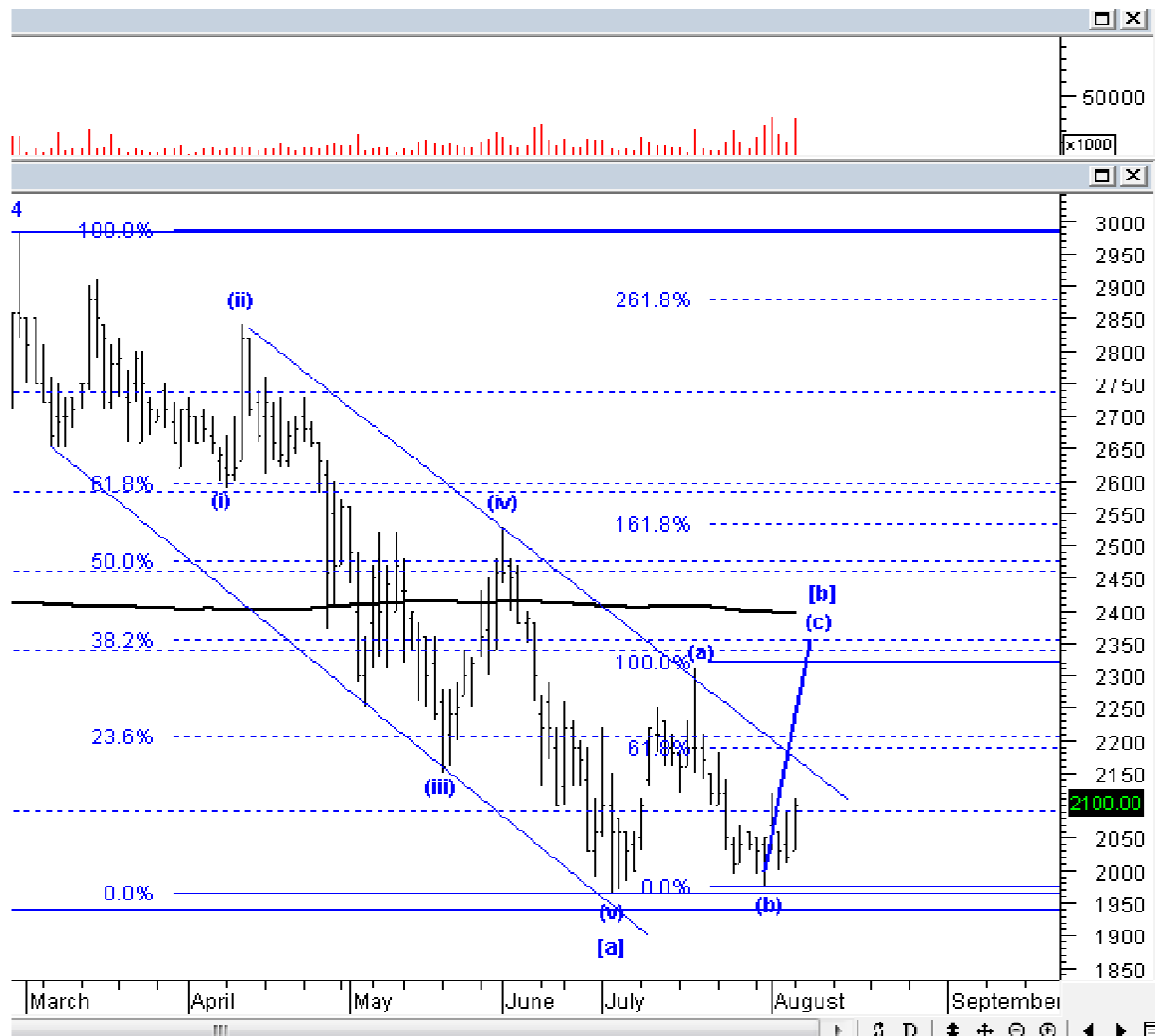
IHSG kemarin masih menguat dan berhasil ditutup di atas 6100, tampaknya kenaikan IHSG menjadikan wave (i) mengalami ekstensi, target berikutnya ada di level 6150, dan 6210. Meskipun arahnya masih menguat untuk jangka pendek, tetapi kami minta agar tetap waspada terhadap peluang koreksi dari wave (ii), yang akan menjadikan IHSG rawan koreksi dalam dan agresif.

Support : 6050, 5900, 5810

Resisten : 6150, 6210

# Stock Recommendation for Today

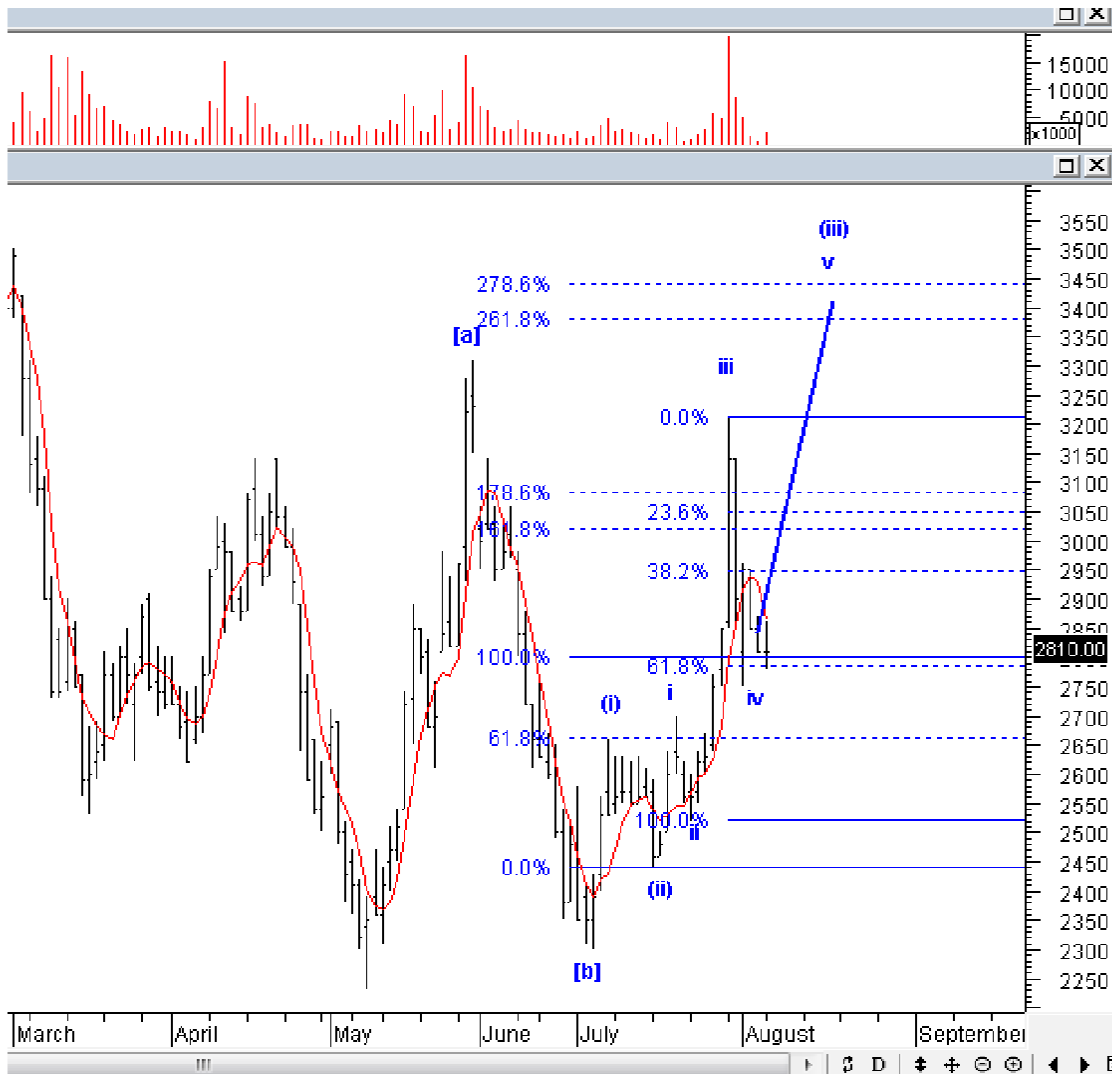
**SCMA:** *Buy on weakness – Buy area 2050-2100; TP 2320, 2380; SL 2030*



SCMA kemarin menguat dengan volume besar, ini mengkonfirmasi bahwa SCMA sedang berada di awal wave (c) dari wave [b]. Silakan BoW SCMA, upside SCMA masih cukup jauh.

# Stock Recommendation for Today

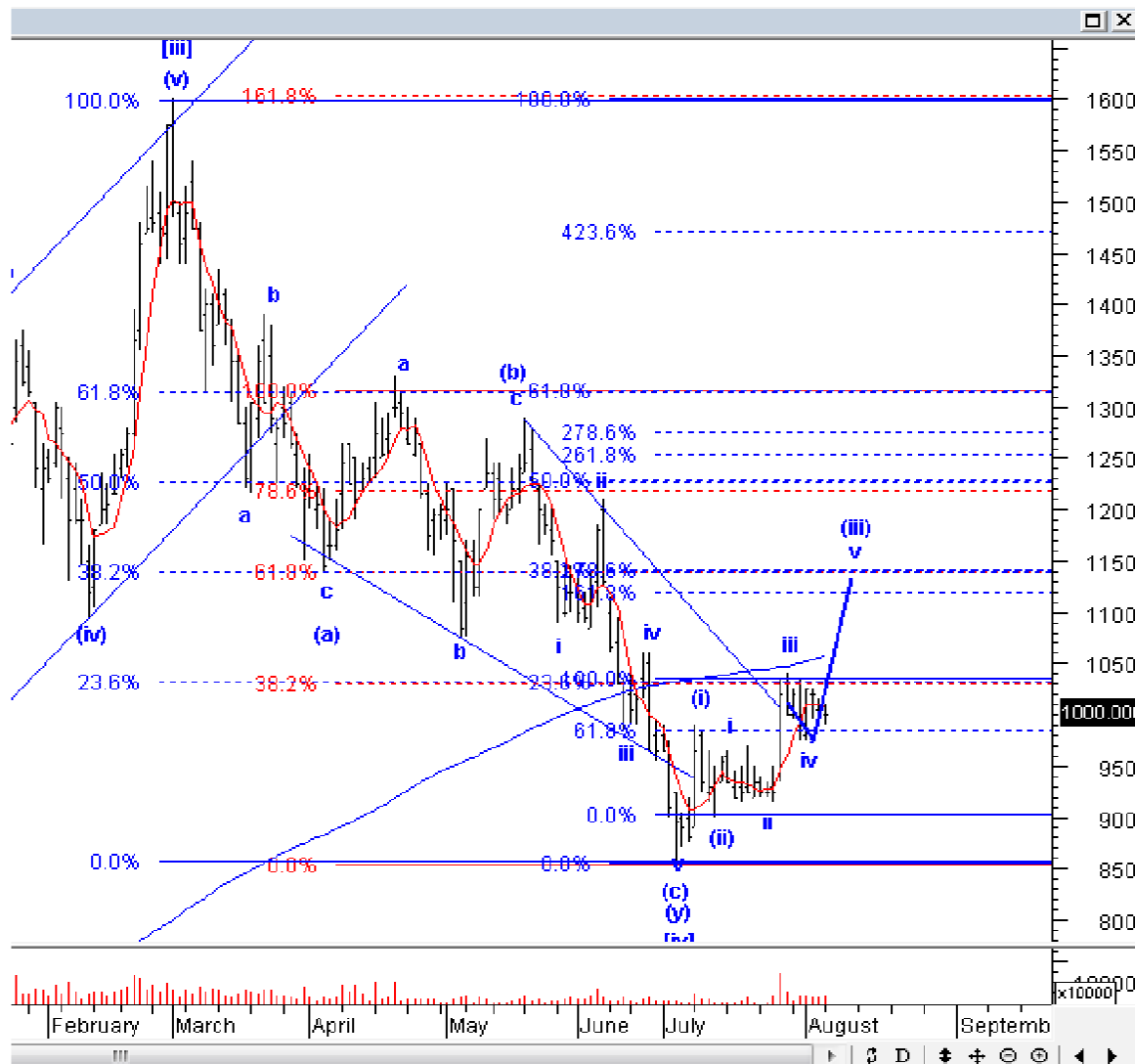
**HRUM:** Buy on weakness – Buy 2800-2810; TP 3200, 3350, 3400; SL 2750



HRUM kami yakini sudah selesai membentuk wave iv dari wave (iii). Silakan BoW HRUM.

# Stock Recommendation for Today

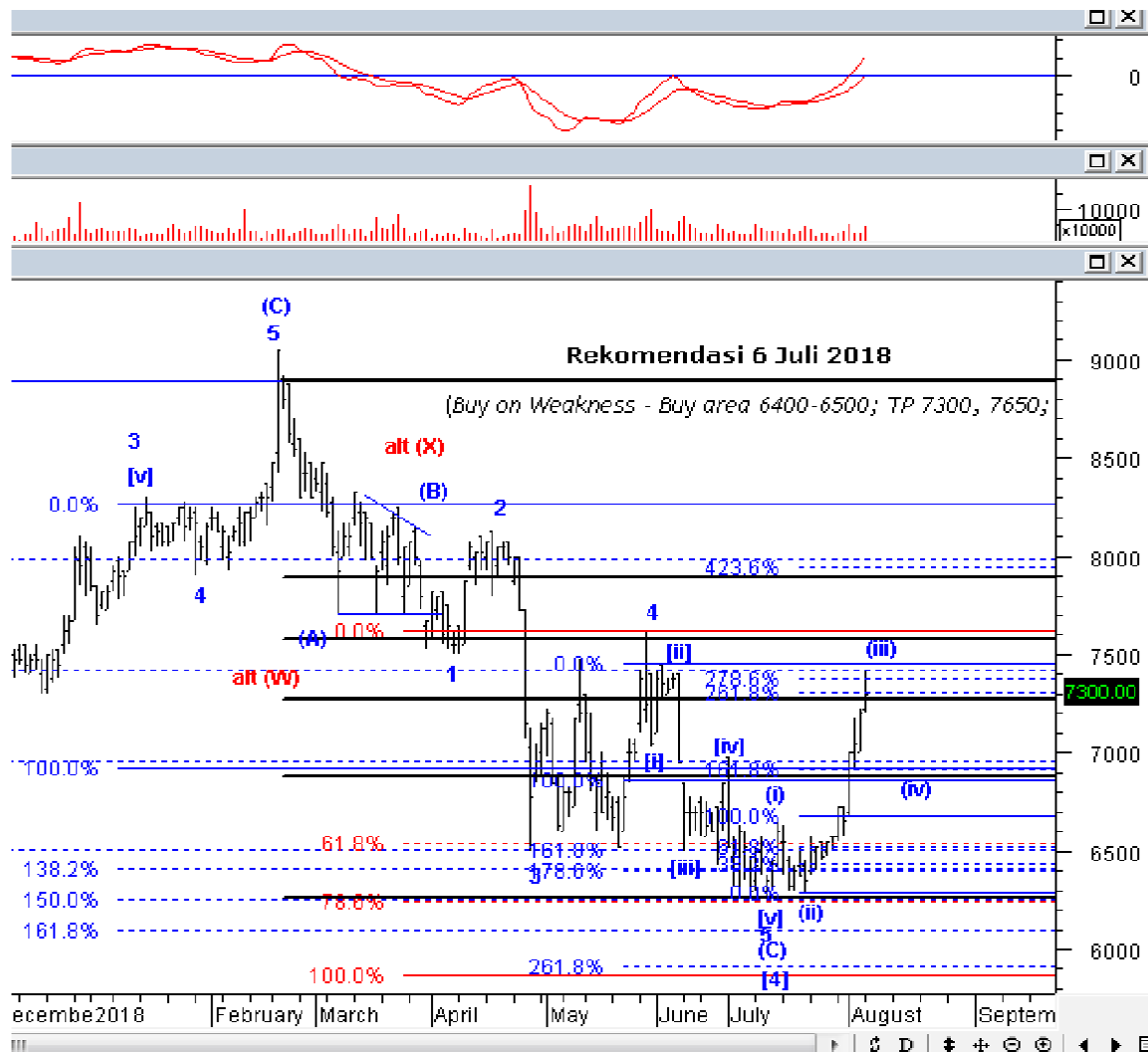
**MEDC:** Buy on weakness – Buy area 980-1000; TP 1050, 1120-1140; SL break 975



MEDC kemarin membentuk *doji*, dan ini mengkonfirmasi bahwa MEDC sudah selesai membentuk *wave iv* dari *wave (iii)*. Harusnya MEDC pagi ini akan menguat lagi. Silakan BoW atau menambah posisi.

# Stock Recommendation for Today

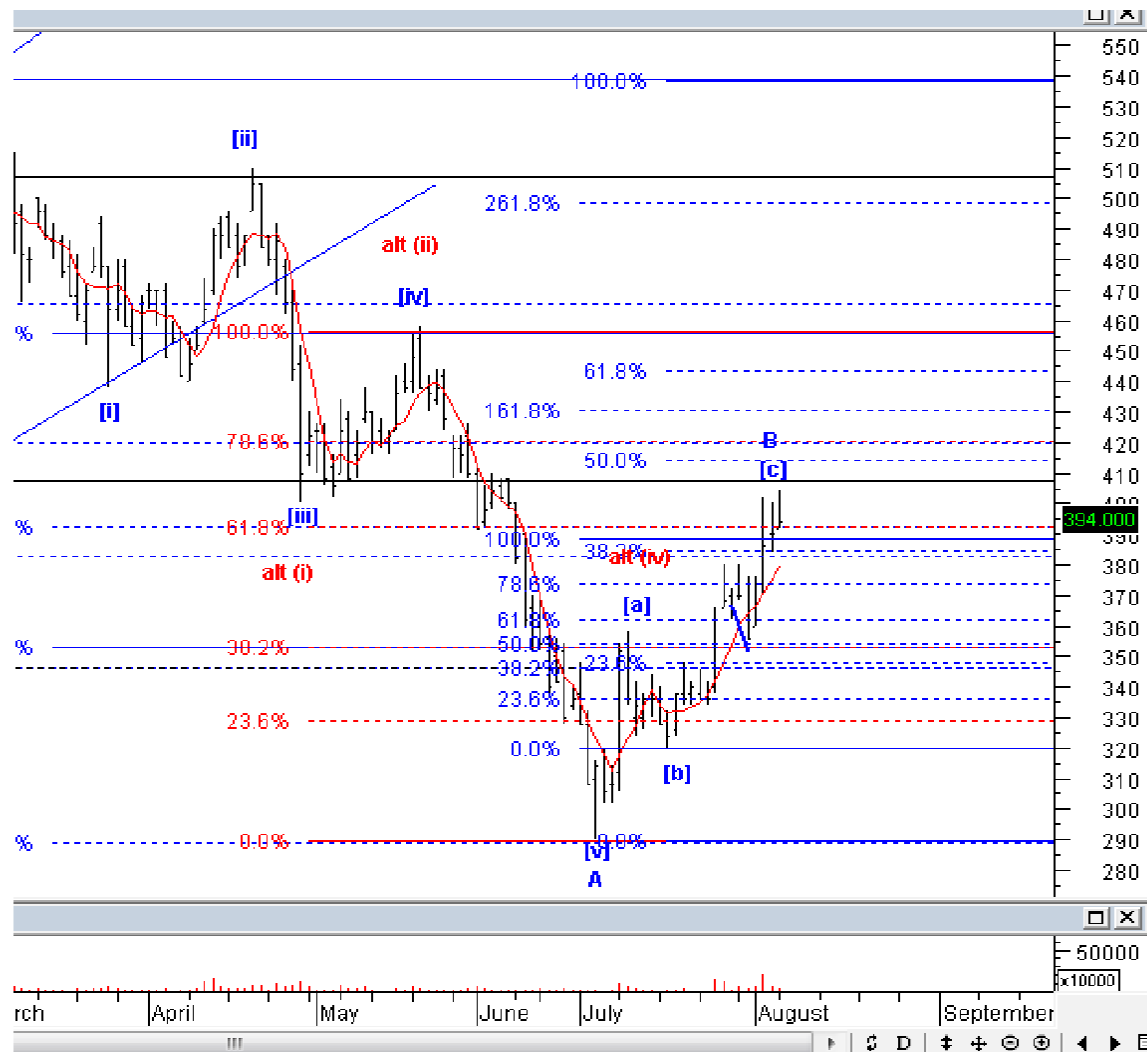
**BMRI:** *Take profit – Sell area 7350-7450; Downside target 7000*



BMRI pernah kami rekomendasikan sejak tanggal 6 Juli lalu, dan target pertama BMRI sudah tercapai di 7300. Kami sarankan untuk melakukan *profit taking* hari ini, mengingat BMRI sudah hampir selesai membentuk *wave* (iii), dan akan terkoreksi menyelesaikan *wave* (iv). Lakukan *buyback* jika target *wave* (iv) sudah tercapai.

## Stock Recommendation for Today

**ELSA:** *Take profit – Sell area 394-396; Downside target 360, 344*



ELSA pernah kami rekomendasikan tanggal 7 Juli lalu, dengan target akhir di 394. Kemarin ELSA ditutup di level 394, yang berarti target kami sudah tercapai. Kami rekomendasikan untuk melakukan *profit taking* pada ELSA, karena posisi ELSA sudah berada di akhir wave [c] dari wave B, dan rawan terkoreksi.



**PT NISP Sekuritas**  
**OCBC NISP Tower Lt. 21 (Head Office)**  
Jl. Prof. Dr. Satrio Kav. 25  
Jakarta 12940 Indonesia  
Phone. (021) 2935 2788 (hunting)  
Fax. (021) 5794 4095  
Email: [info@nispsekuritas.com](mailto:info@nispsekuritas.com)  
Website: [www.nispsekuritas.com](http://www.nispsekuritas.com)

<b>Branches</b>	<b>Address</b>	<b>Phone:</b>	<b>Fax:</b>
<b>Pluit Jakarta</b>	Ruko Sentra Bisnis Blok C28 Jl. Pluit Sakti Raya No. 15 Jakarta Utara 14450	(021) 6667 5050 (hunting)	(021) 6667 5051

### **Rating Definitions**

- Buy on Weakness (BoW) : We expect this stock could be bought below the last price.  
Trading Buy : We expect this stock could be bought at the last price.  
Sell on Strength (SoS) : We expect this stock could be sold above the last price.  
Trading Sell : We expect this stock could be sold at the last price.

### **DISCLAIMER**

This report was produced by PT NISP Sekuritas, a member of the Indonesia Stock Exchange (IDX). The Information contained in this report has been obtained from public sources believed to be reliable and the options, analysis, forecasts, projections and expectations contained in this report are based on such information and are expressions of belief only. No representation or warranty, express or implied, is made that such information or opinion is accurate, complete or verified and it should not be relied upon as such. This report is provided solely for the information of clients of PT NISP Sekuritas who has to make their own investment decisions without reliance on this report. Neither PT NISP Sekuritas nor any officer or employee of PT NISP Sekuritas accept any liability whatsoever for any direct or consequential loss arising from any use of this report or its contents. PT NISP Sekuritas may be involved in transactions contrary to any opinions herein to make markets, or have positions in the securities recommended herein. PT NISP Sekuritas may seek or will seek investment banking or other business relationships with the companies within this report. This report is a copyright of PT NISP Sekuritas. For further information please contact our number 62-21-29352788 or fax 62-21-57944095.