

NISP Daily Elliott Wave Research

06 September 2017

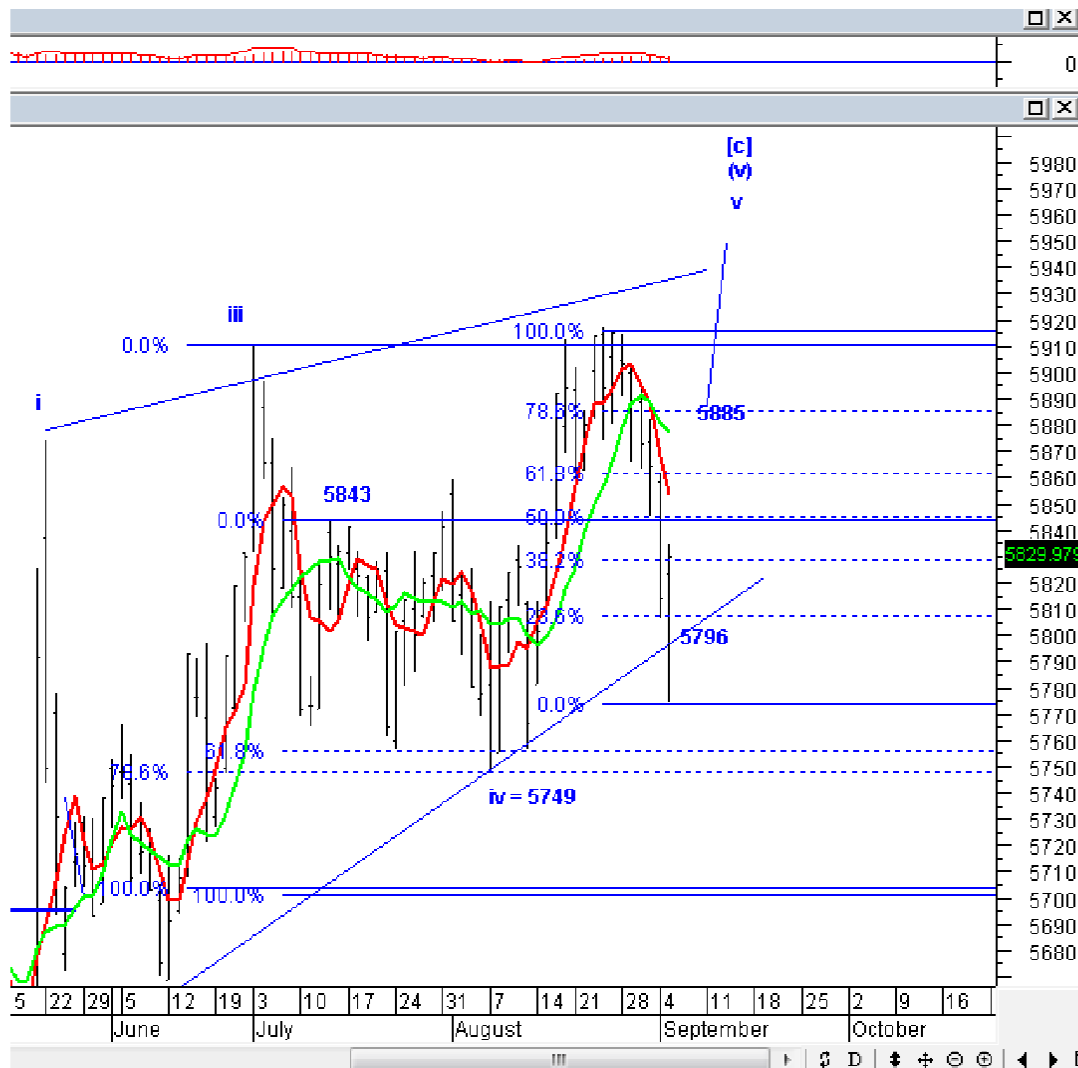


Elliottician Overview

- Jakarta Composite Index *Elliott Wave Perspective*
 - *Short Term View (1-2 days): Bearish*
- *Stocks Recommendation for Today*
 - **SCMA**; *Buy on weakness – Buy area 2100-2140; TP 2230, 2350; SL break 2050*
 - **GGRM**; *Add position – Buy area 65800-66100; TP 69000, 72000; SL break 64500*
 - **ANTM**; *Add position – Buy area 690-705; TP 780-800, 850; SL break 670*
 - **INTP**; *Sell on strength – Sell area 18900-19100; Target koreksi 16000-16500*
 - **ITMG**; *Sell on strength – Sell area 19800-20000; Target koreksi 14500*

Jakarta Composite Index

Elliott Wave Perspective



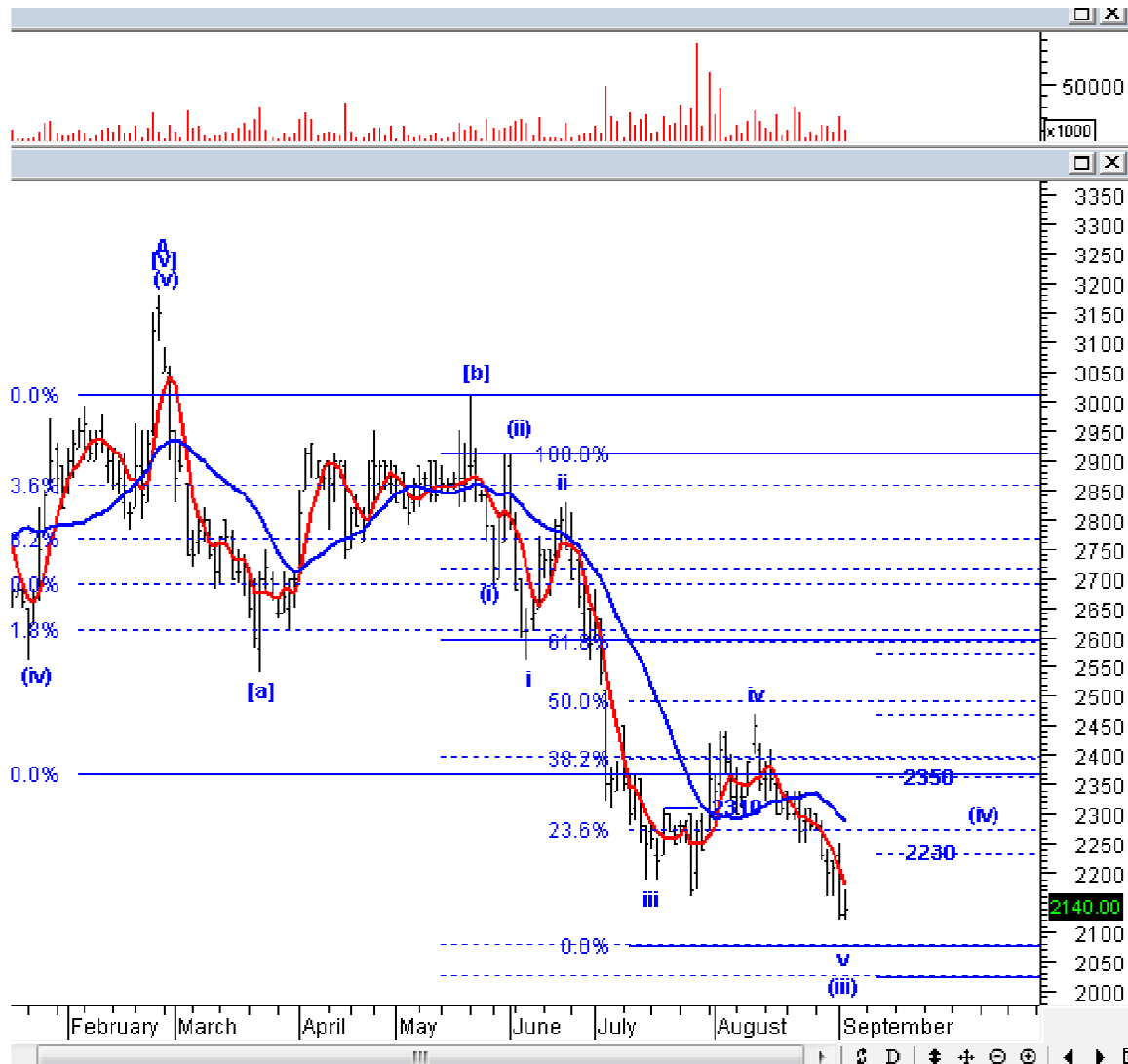
Selamat pagi, IHSK kemarin berhasil *rebound* dan ditutup di atas *support* 5796. Meskipun belum ada konfirmasi apakah *wave v* dari *wave (v)* sudah selesai, tetapi dengan mempertimbangkan koreksi yang terjadi kemarin, dan sempat menyentuh di bawah 5775, harusnya resiko IHSK sudah semakin meningkat. Kami tetap merekomendasikan rekan-rekan untuk mulai memperbanyak *cash*. Penggunaan penguatan yang mungkin terjadi 1-2 hari ini untuk banyak melakukan penjualan di saham-saham *bluechip*, terutama yang sudah *break even* ataupun sudah *profit*.

Support : 5750, 5642

Resisten : 5950

Stock Recommendation for Today

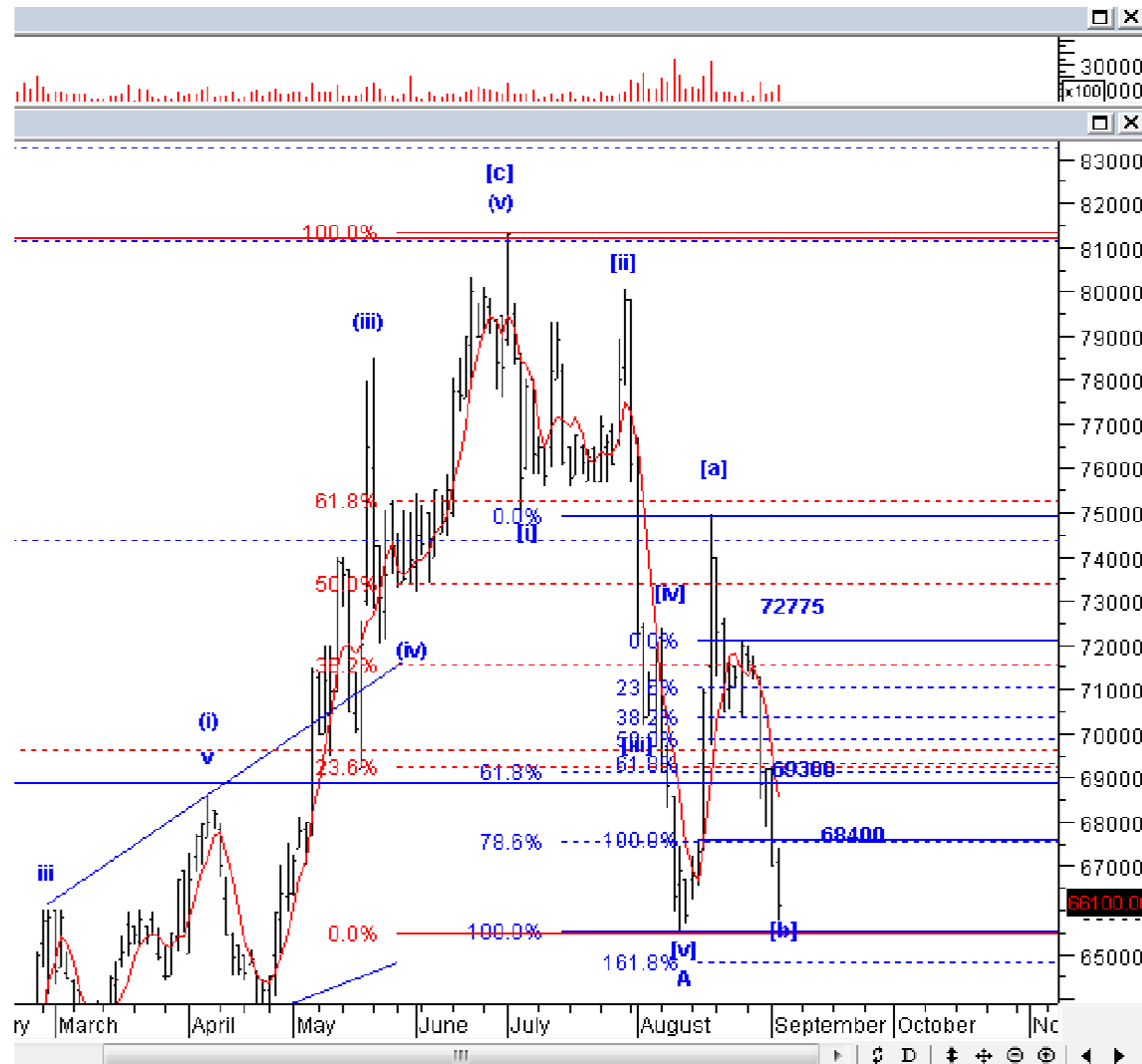
SCMA: Buy on weakness – Buy area 2100-2140; TP 2230, 2350; SL break 2050



SCMA harusnya sudah berada di akhir wave v dari wave (iii). Silakan BoW SCMA.

Stock Recommendation for Today

GGRM; Add position – Buy area 65800-66100; TP 69000, 72000; SL break 64500



Anda dapat melakukan *switching* saham *bluechip* seperti perbankan ataupun Telkom ke saham *bluechip* berbasis *consumer goods*, seperti GGRM. Koreksi yang terjadi pada GGRM kemarin masih merupakan koreksi wajar sebagai bagian dari *wave* [b]. Silakan menambah posisi pada GGRM.

Stock Recommendation for Today

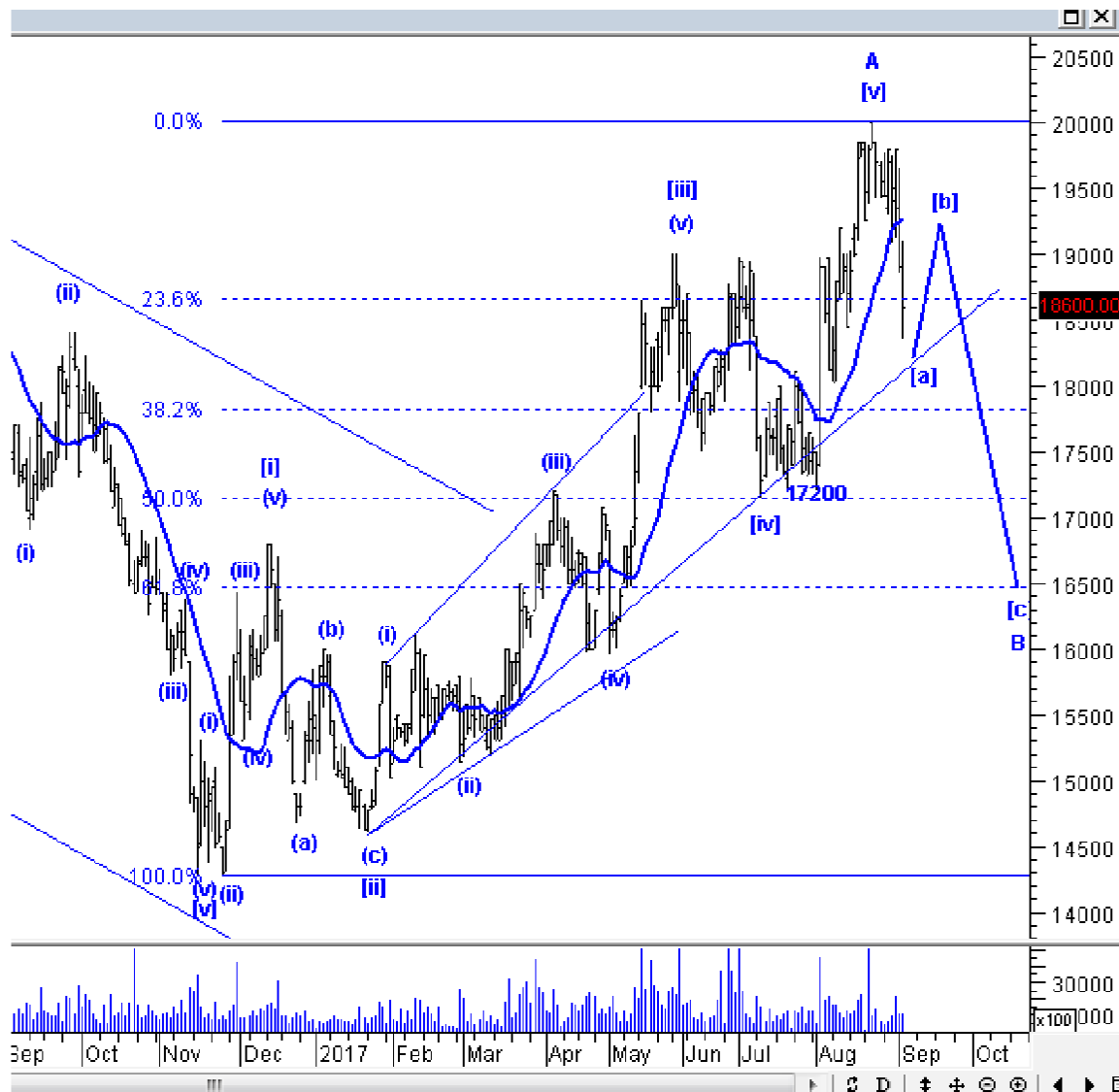
ANTM; Add position – Buy area 690-705; TP 780-800, 850; SL break 670



Skenario jangka pendek ANTM kami ubah, tetapi untuk jangka menengah, skenario masih tetap sama. Posisi ANTM kemarin adalah koreksi wave (ii). Dengan terbentuknya *doji*, ANTM harusnya konfirmasi selesai membentuk wave (ii), dan punya peluang untuk menguat lagi. Silakan menambah posisi pada ANTM.

Stock Recommendation for Today

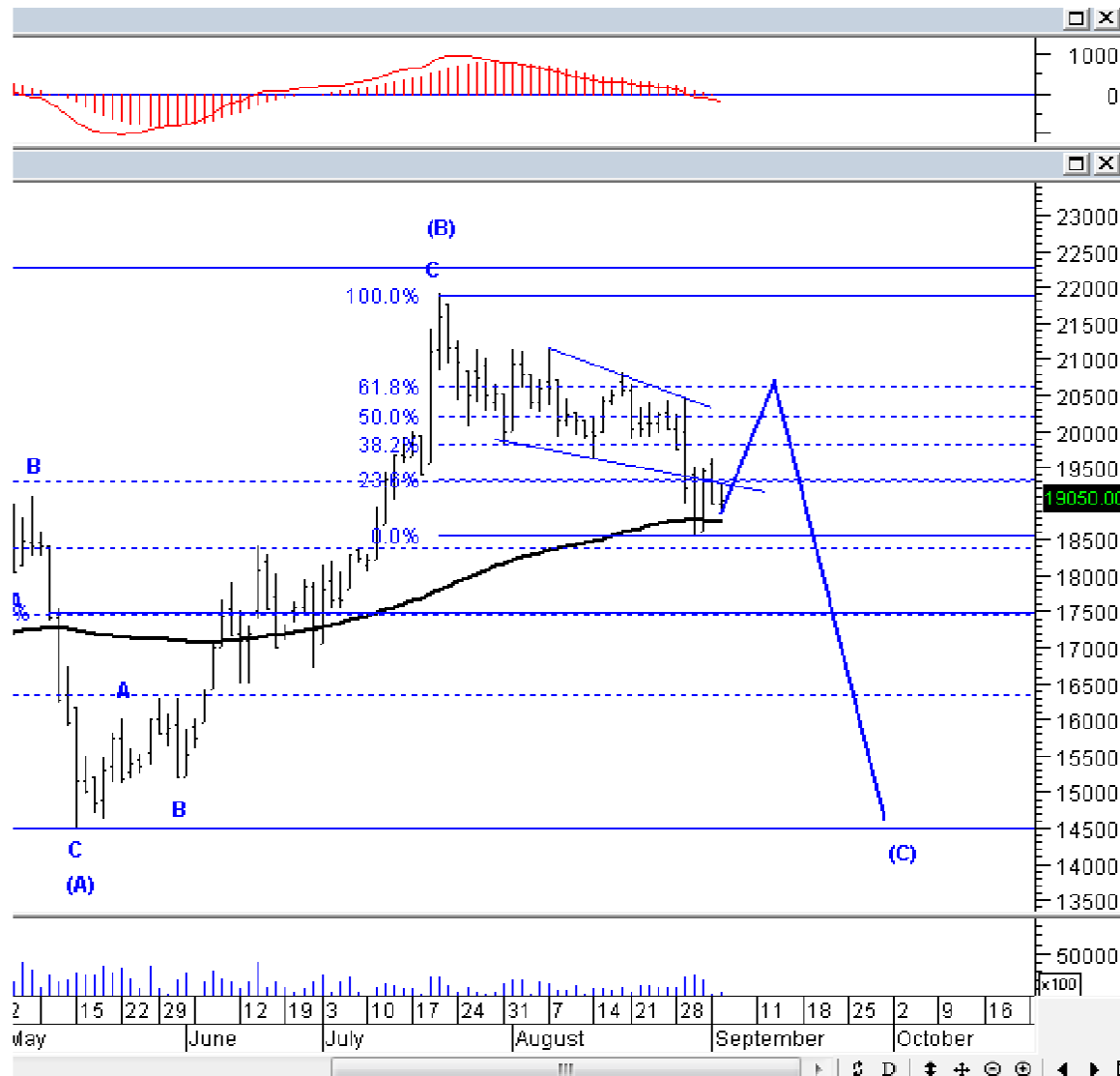
INTP: *Sell on strength – Sell area 18900-19100; Target koreksi 16000-16500*



INTP kemarin masih terkoreksi dengan volume membesar, ini mengkonfirmasi bahwa INTP selesai membentuk *wave* [a], silakan SoS jika INTP *rebound* dalam 1-2 hari ini. Harusnya, koreksi INTP untuk jangka menengah masih akan terjadi.

Stock Recommendation for Today

ITMG; *Sell on strength – Sell area 19800-20000; Target koreksi 14500*



ITMG harusnya dalam waktu 2-3 hari ini akan menguat lagi minimal ke 19800-20000, silakan SoS ITMG saat ITMG rebound, karena ITMG sudah konfirm selesai membentuk wave (B).

PT NISP Sekuritas
OCBC NISP Tower Lt. 21 (Head Office)
Jl. Prof. Dr. Satrio Kav. 25
Jakarta 12940 Indonesia
Phone. (021) 2935 2788 (hunting)
Fax. (021) 5794 4095
Email: info@nispsekuritas.com
Website: www.nispsekuritas.com

| Branches | Address | Phone: | Fax: |
|----------------------|---|---------------------------|-----------------|
| Pluit Jakarta | Ruko Sentra Bisnis Blok C28 Jl. Pluit Sakti Raya No. 15 Jakarta Utara 14450 | (021) 6667 5050 (hunting) | (021) 6667 5051 |

Rating Definitions

Buy on Weakness (BoW) : We expect this stock could be bought below the last price.
Trading Buy : We expect this stock could be bought at the last price.
Sell on Strength (SoS) : We expect this stock could be sold above the last price.
Trading Sell : We expect this stock could be sold at the last price.

DISCLAIMER

This report was produced by PT NISP Sekuritas, a member of the Indonesia Stock Exchange (IDX). The Information contained in this report has been obtained from public sources believed to be reliable and the options, analysis, forecasts, projections and expectations contained in this report are based on such information and are expressions of belief only. No representation or warranty, express or implied, is made that such information or opinion is accurate, complete or verified and it should not be relied upon as such. This report is provided solely for the information of clients of PT NISP Sekuritas who has to make their own investment decisions without reliance on this report. Neither PT NISP Sekuritas nor any officer or employee of PT NISP Sekuritas accept any liability whatsoever for any direct or consequential loss arising from any use of this report or its contents. PT NISP Sekuritas may be involved in transactions contrary to any opinions herein to make markets, or have positions in the securities recommended herein. PT NISP Sekuritas may seek or will seek investment banking or other business relationships with the companies within this report. This report is a copyright of PT NISP Sekuritas. For further information please contact our number 62-21-29352788 or fax 62-21-57944095.