

# ***NISP Daily Elliott Wave Research***

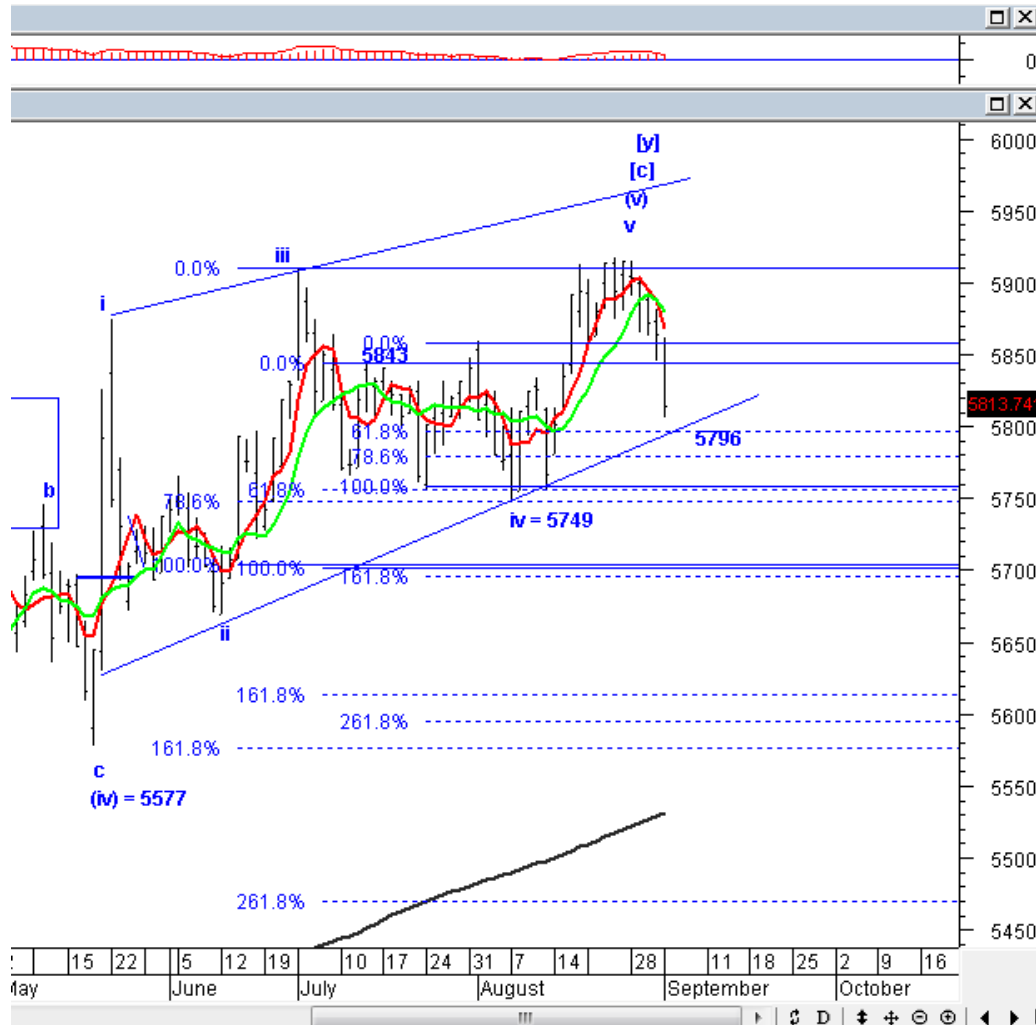
05 September 2017

# Elliottician Overview

- Jakarta Composite Index *Elliott Wave Perspective*
  - *Short Term View (1-2 days): Bearish*
- *Stocks Recommendation for Today*
  - **HMSP**; *Buy on weakness – Buy area 3450-3500; TP 3800, 3900; SL break 3340*
  - **WSBP**; *Add position – Buy area 420-428; TP 494, 510; SL break 414*
  - **BWPT**; *Add position – Buy area 214-216; TP 232, 236; SL break 212*
  - **INCO**; *Sell on strength – Sell area 3010-3050; Target koreksi 2650, 2350*
  - **PTBA**; *Sell on strength – Sell area 11900-12000; Target koreksi 11400, 10500*

# Jakarta Composite Index

## Elliott Wave Perspective



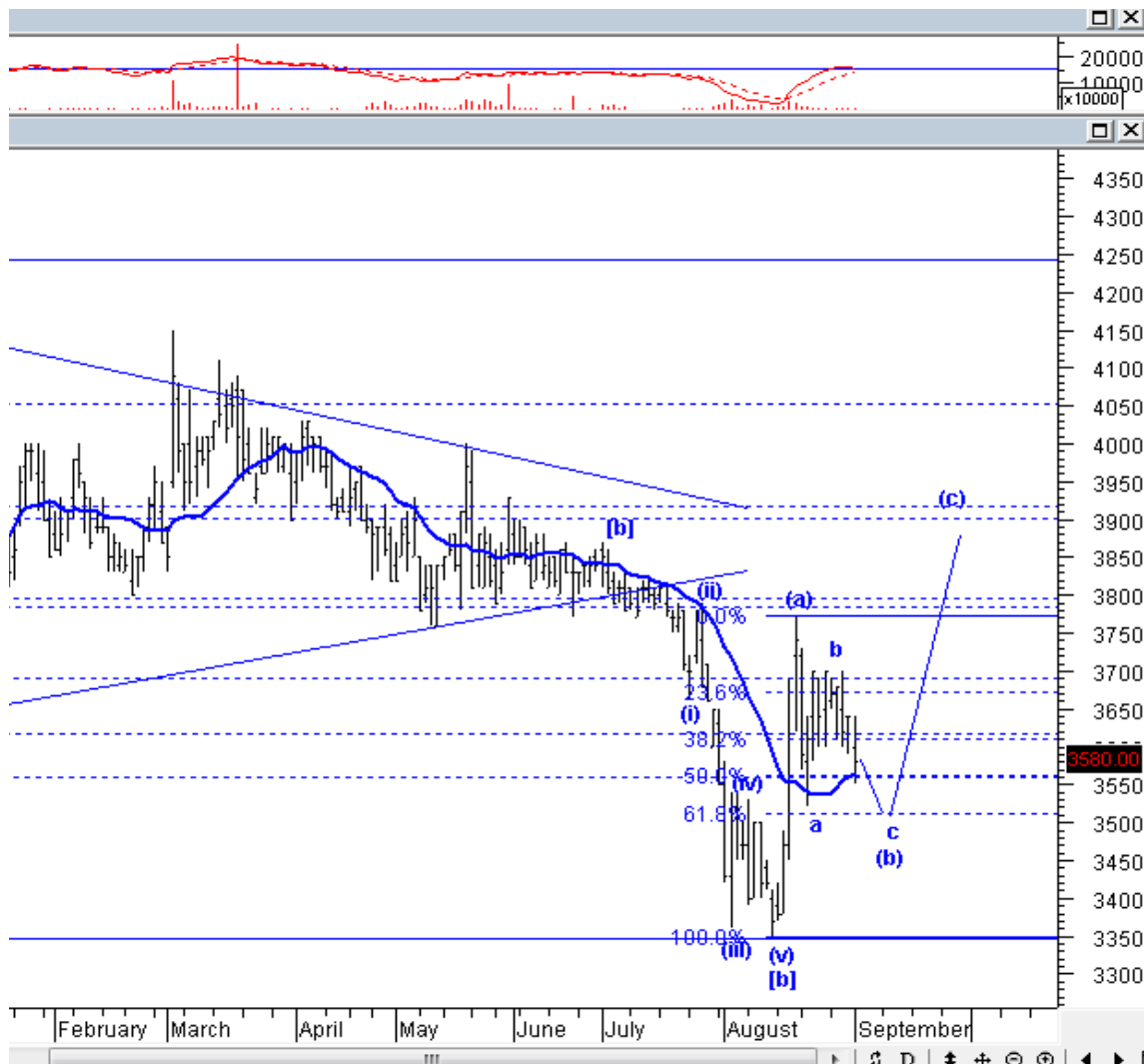
Selamat pagi, IHSG kemarin malah terkoreksi dalam alih-alih menguat, yang disebabkan jebolnya *support* 5845. Saat ini, IHSG mencoba untuk menguji *support minor* 5796. Seharusnya IHSG dapat *rebound* ketika menyentuh itu. Perhatikan *support* penting di 5749, jika *support* ini jebol, tampaknya IHSG konfirm selesai membentuk *wave v* dari *wave (v)* dari *wave [c]*, dan konfirm akan *bearish* selama beberapa bulan. Jika IHSG turun ke bawah 5749, kami akan mengubah strategi untuk lebih banyak merekomendasikan SoS terutama dari saham-saham yang pernah kami rekomendasikan sebelumnya, dan memperbanyak *cash*.

Support : 5750, 5642

Resisten : 5950

# Stock Recommendation for Today

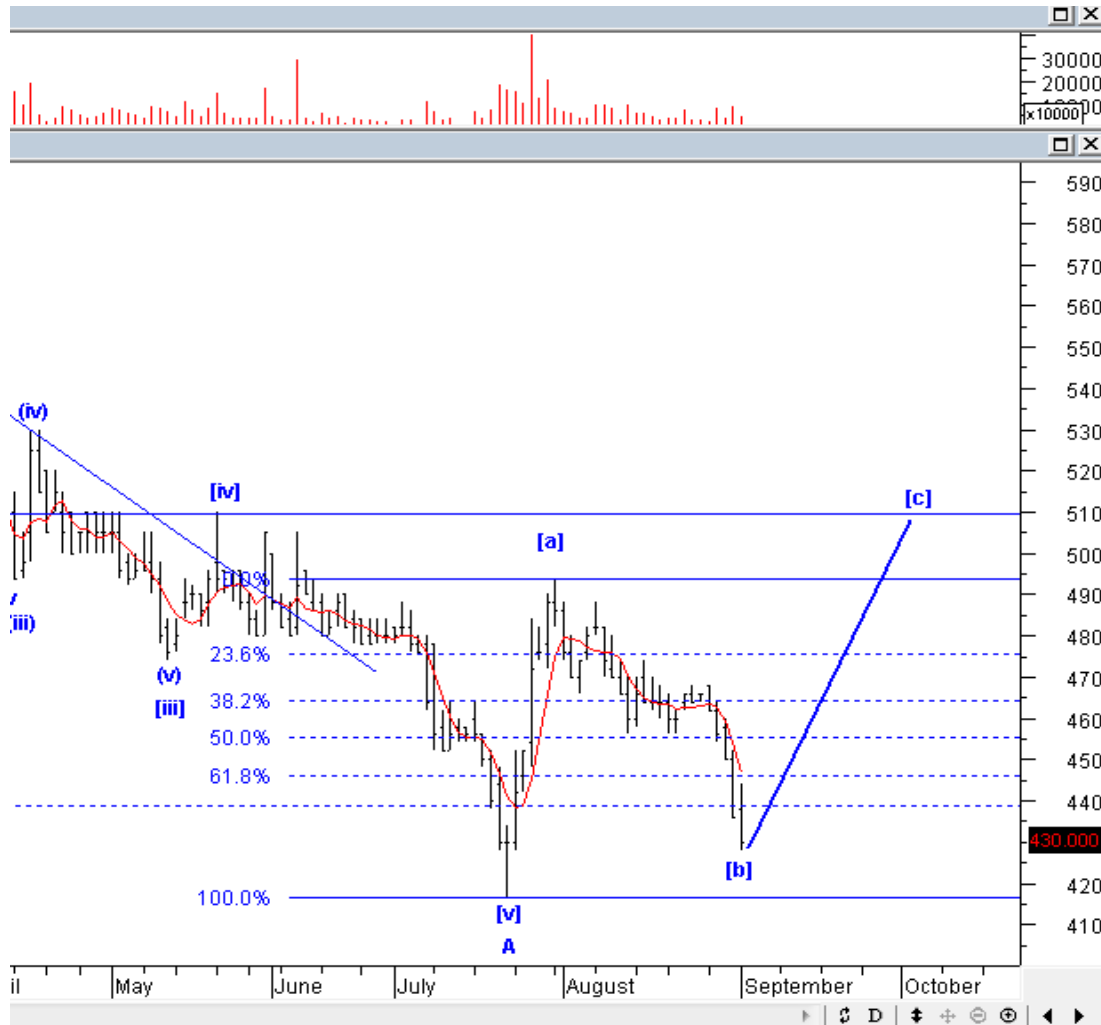
**HMSP:** Buy on weakness – Buy area 3450-3500; TP 3800, 3900; SL break 3340



HMSP kemarin terkoreksi masih wajar, dan tertahan di *support* MA. Seharusnya *downside risk* HMSP sudah terbatas, mengingat target ideal *wave c* dari *wave (b)* ada di level 3450-3500. Silakan BoW jika HMSP turun ke level beli kami.

# Stock Recommendation for Today

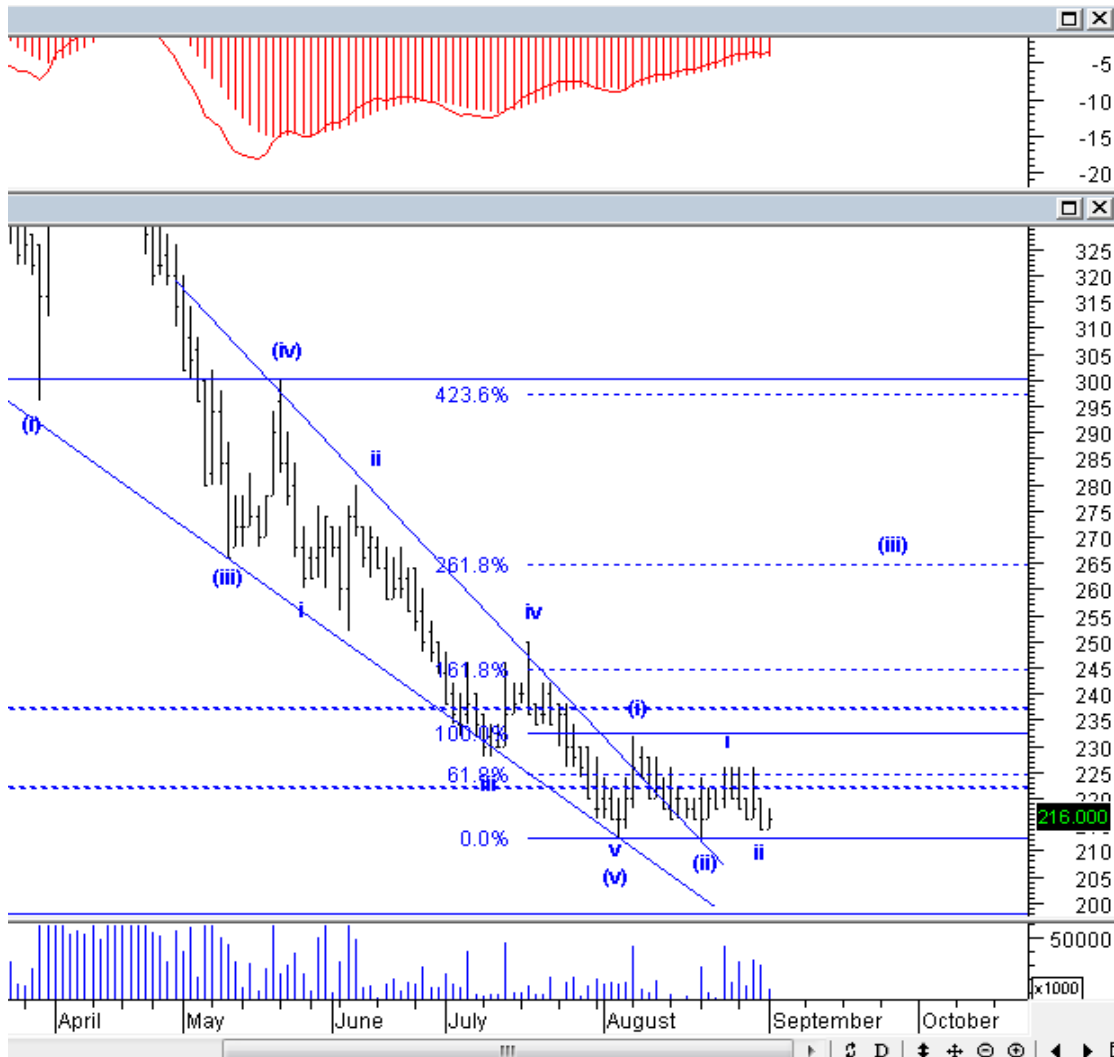
**WSBP;** Add position – Buy area 420-428; TP 494, 510; SL break 414



WSBP harusnya masih berada di wave [b], dari wave B. Idealnya, masih ada satu kali *upside* lagi bagi WSBP. Silakan BoW WSBP, dan perhatikan level *stoploss*nya.

# Stock Recommendation for Today

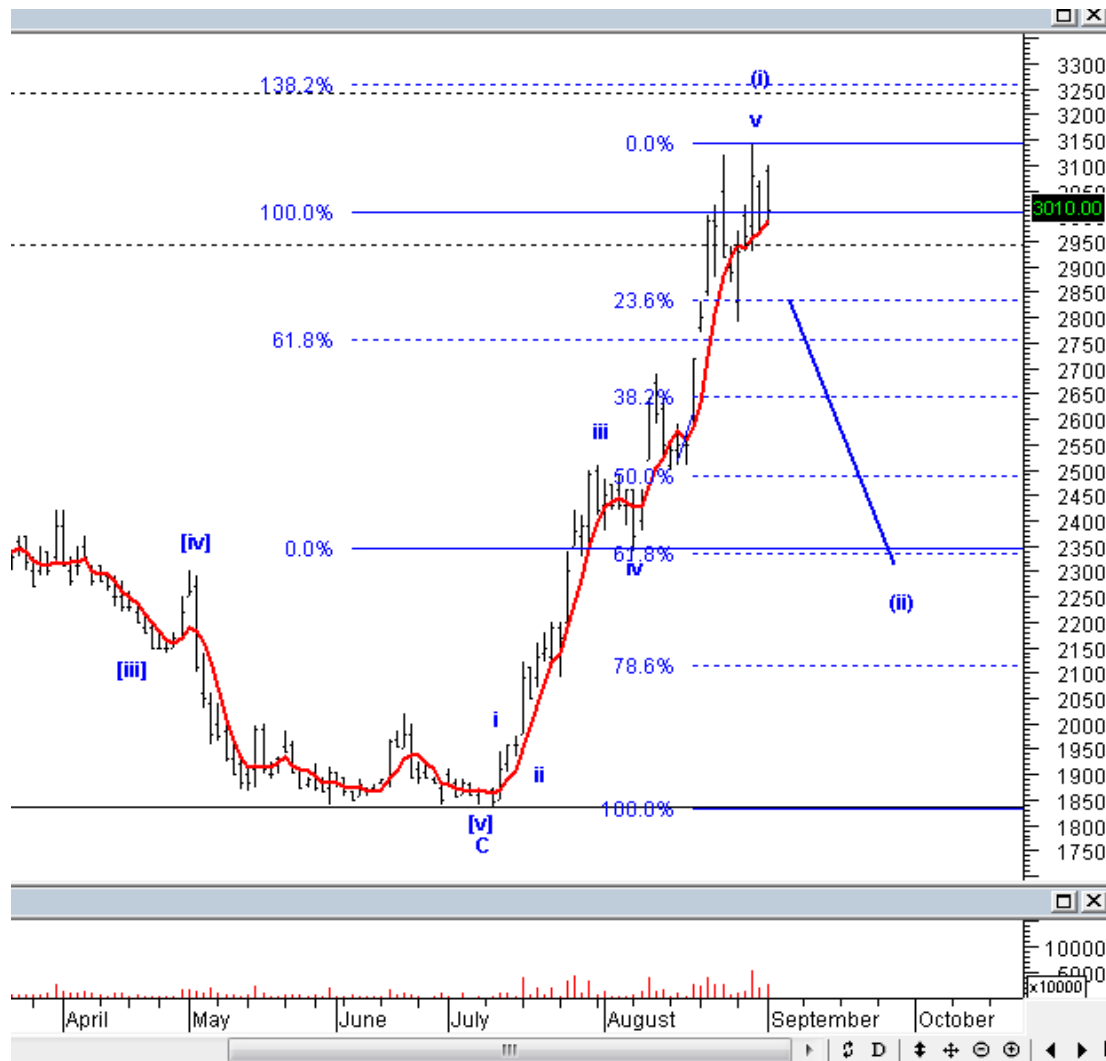
**BWPT;** Add position – Buy area 214-216; TP 232, 236; SL break 212



BWPT, harusnya sudah berada di akhir wave ii. Silakan BoW BWPT, karena idealnya sektor *agriculture* dapat menjadi *buffer* kuat jika IHSG terkoreksi.

# Stock Recommendation for Today

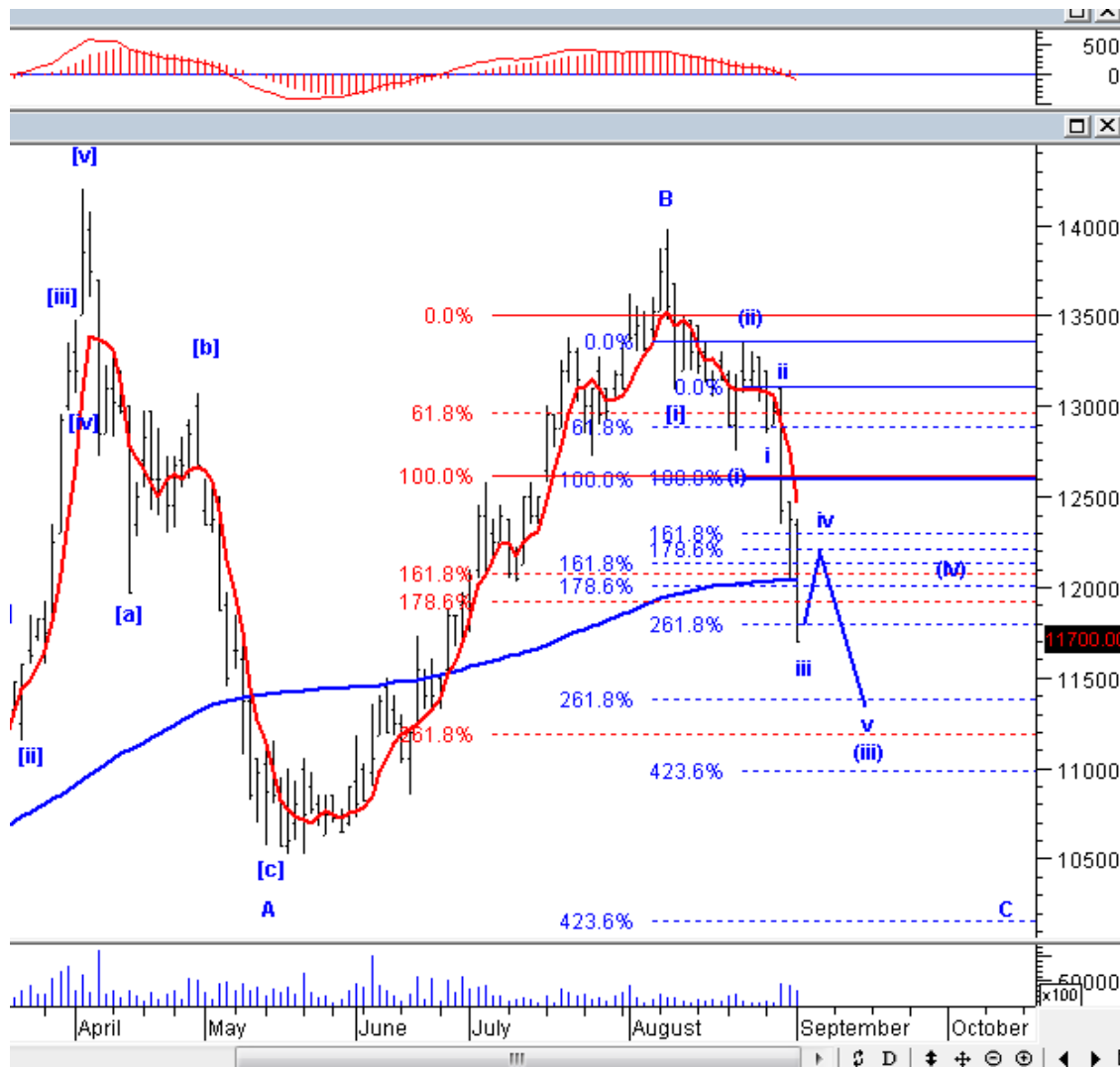
**INCO:** *Sell on strength – Sell area 3010-3050; Target koreksi 2650, 2350*



INCO kemarin terkoreksi dengan volume besar, ini mengkonfirmasi bahwa INCO seharusnya akan segera menjebol *support* 2970. Jika INCO turun ke bawah 2970, harusnya INCO akan turun agresif sekaligus mengkonfirmasi selesainya *wave* v dari *wave* (i). Silakan SoS INCO.

# Stock Recommendation for Today

**PTBA;** *Sell on strength – Sell area 11900-12000; Target koreksi 11400, 10500*



PTBA kemarin turun agresif dan menjebol *support* SMA-200, ini menunjukkan bahwa PTBA konfirm berada di *wave* iii dari *wave* (iii). *Downside* masih jauh ke bawah, silakan SoS dan *clear all position* jika PTBA rebound membentuk *wave* iv. Harusnya, 1-2 hari ini, PTBA akan rebound dan mulai membentuk *wave* iv.



**PT NISP Sekuritas**  
**OCBC NISP Tower Lt. 21 (Head Office)**

Jl. Prof. Dr. Satrio Kav. 25  
Jakarta 12940 Indonesia  
Phone. (021) 2935 2788 (hunting)  
Fax. (021) 5794 4095  
Email: [info@nispsekuritas.com](mailto:info@nispsekuritas.com)  
Website: [www.nispsekuritas.com](http://www.nispsekuritas.com)

<b>Branches</b>	<b>Address</b>	<b>Phone:</b>	<b>Fax:</b>
<b>Pluit Jakarta</b>	Ruko Sentra Bisnis Blok C28 Jl. Pluit Sakti Raya No. 15 Jakarta Utara 14450	(021) 6667 5050 (hunting)	(021) 6667 5051

**Rating Definitions**

- Buy on Weakness (BoW) : We expect this stock could be bought below the last price.  
Trading Buy : We expect this stock could be bought at the last price.  
Sell on Strength (SoS) : We expect this stock could be sold above the last price.  
Trading Sell : We expect this stock could be sold at the last price.

**DISCLAIMER**

This report was produced by PT NISP Sekuritas, a member of the Indonesia Stock Exchange (IDX). The Information contained in this report has been obtained from public sources believed to be reliable and the options, analysis, forecasts, projections and expectations contained in this report are based on such information and are expressions of belief only. No representation or warranty, express or implied, is made that such information or opinion is accurate, complete or verified and it should not be relied upon as such. This report is provided solely for the information of clients of PT NISP Sekuritas who has to make their own investment decisions without reliance on this report. Neither PT NISP Sekuritas nor any officer or employee of PT NISP Sekuritas accept any liability whatsoever for any direct or consequential loss arising from any use of this report or its contents. PT NISP Sekuritas may be involved in transactions contrary to any opinions herein to make markets, or have positions in the securities recommended herein. PT NISP Sekuritas may seek or will seek investment banking or other business relationships with the companies within this report. This report is a copyright of PT NISP Sekuritas. For further information please contact our number 62-21-

29352788 or fax 62-21-57944095.