

NISP Daily Elliott Wave Research

5 July 2018

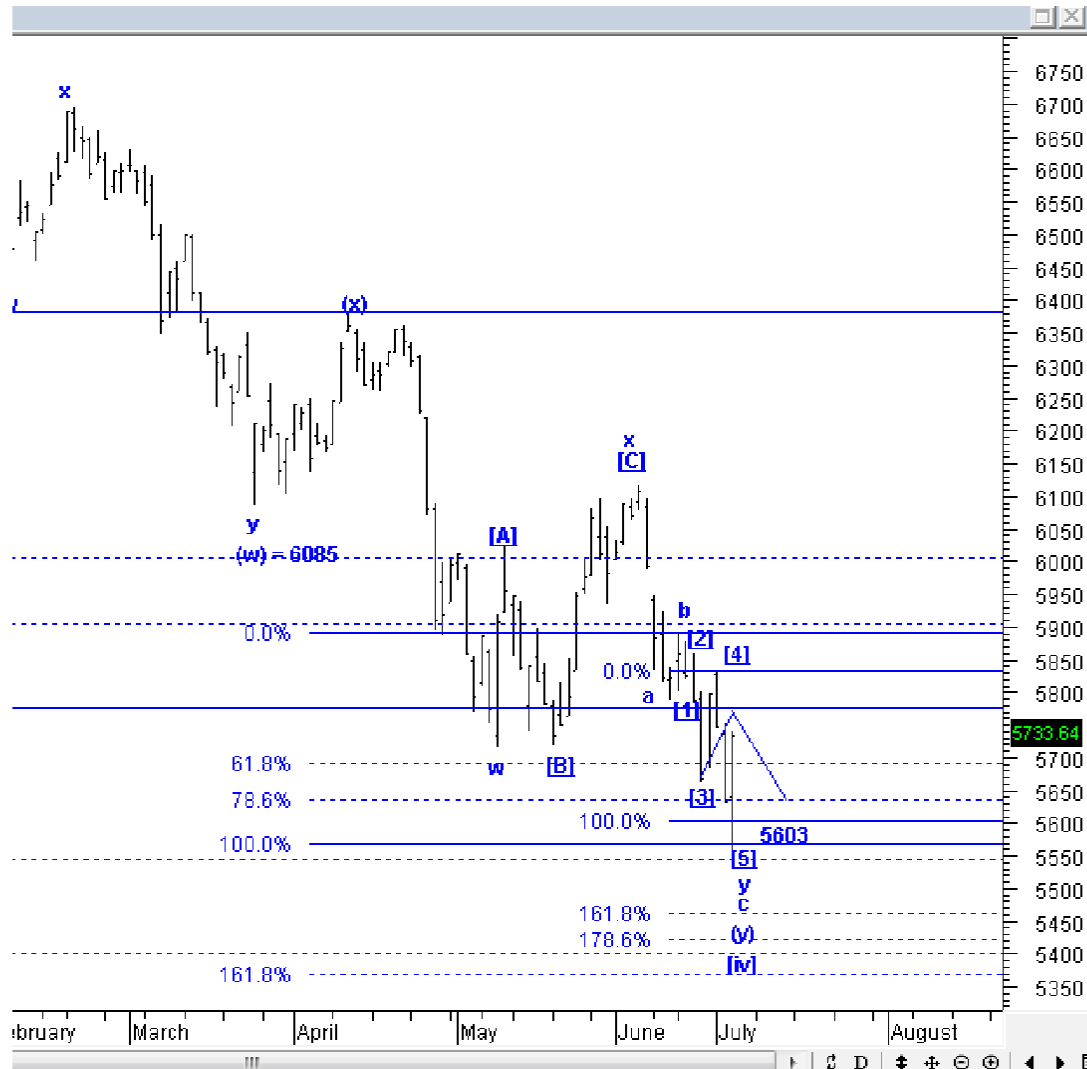


Elliottician Overview

- Jakarta Composite Index *Elliott Wave Perspective*
 - *Short Term View (1-2 days): Bullish*
- *Stocks Recommendation for Today*
 - **JSMR**; *Buy on weakness – Buy area 4250-4300; TP 4750. 4900-4950; SL break 4000*
 - **GJTL**; *Buy on weakness – Buy area 600-610; TP 690, 730, 770; SL break 575*
 - **BBKP**; *Buy on weakness – Buy area 376-400; TP 496, 550; SL break 340*
 - **PTBA**; *Sell on strength – Sell area 4100-4150; Downside target 3450, 3150*
 - **EXCL**; *Sell on strength – Sell area 2360-2400; Downside target 2100, 1850, 1500*

Jakarta Composite Index

Elliott Wave Perspective



IHSX kemarin sempat turun hingga menyentuh level 5557, tetapi setelah itu, IHSX langsung menguat, dan tetap ditutup positif di level 5733. Seharusnya, IHSX sudah hampir konfirm selesai membentuk wave [5] dari wave c dari wave y. Konfirmasi terakhir ada di level 5900. Jika IHSX mampu *break* level 5900, IHSX konfirm mengakhiri *downtrend* jangka pendeknya.

Support : 5630, 5600, 5540-5560
Resisten : 5780-5800, 5900

Stock Recommendation for Today

JSMR: Buy on weakness – Buy area 4250-4300; TP 4750. 4900-4950; SL break 4000



JSMR kemarin naik hampir 9%, dan ini mengkonfirmasi bahwa JSMR selesai membentuk wave B. Artinya, JSMR idealnya akan terus naik mengejar target wave C di 4950. Silakan BoW hanya jika JSMR terkoreksi ke area beli.

Stock Recommendation for Today

GJTL: *Buy on weakness – Buy area 600-610; TP 690, 730, 770; SL break 575*



GJTL kemarin membentuk *hammer*, yang mengkonfirmasi bahwa GJTL sudah selesai membentuk *wave [iii]*. Silakan BoW GJTL, dan manfaatkan peluang trading di *wave [iv]*.

Stock Recommendation for Today

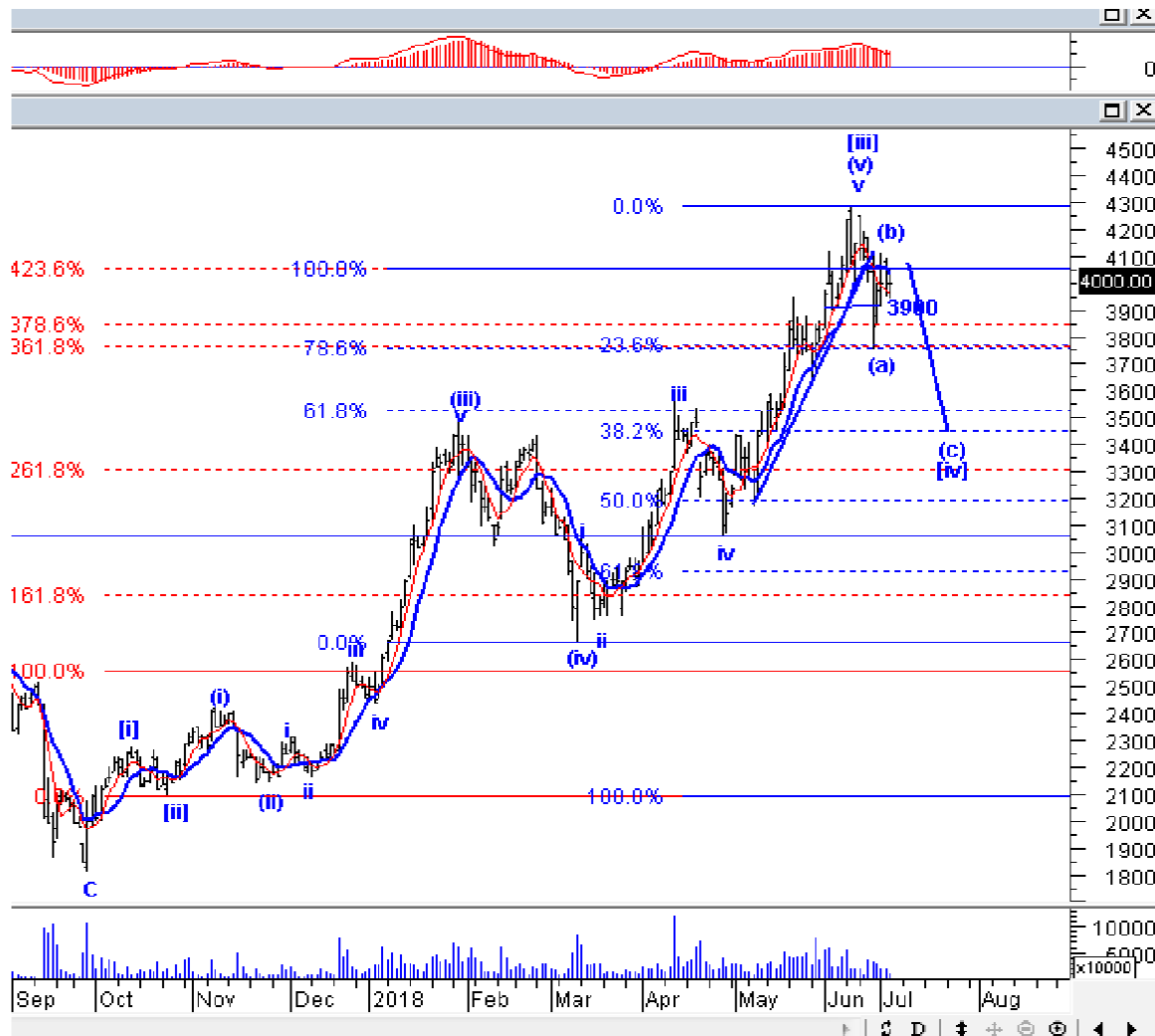
BBKP: *Buy on weakness – Buy area 376-400; TP 496, 550; SL break 340*



Kami pernah rekomendasikan BoW BBKP, hanya saja, area beli BBKP belum tercapai. Pagi ini, kami rekomendasikan BoW BBKP kembali, mengingat BBKP konfirm selesai membentuk wave [v] dan posisi saat ini sudah berada di akhir wave [b], sehingga BBKP harus naik lagi mengejar target wave [c].

Stock Recommendation for Today

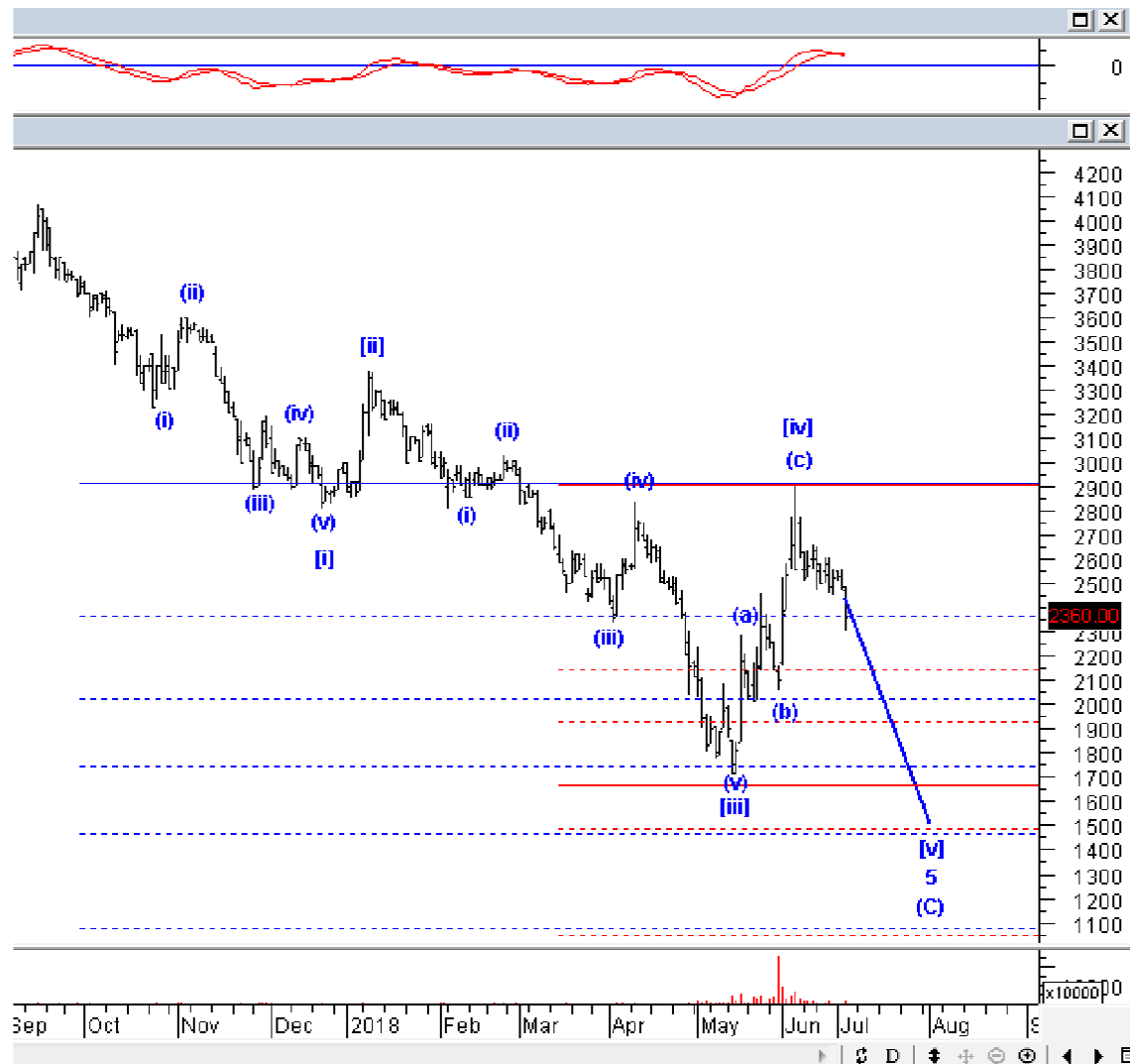
PTBA: *Sell on strength – Sell area 4100-4150; Downside target 3450, 3150*



PTBA harusnya pagi ini masih dapat menguat lagi untuk menyelesaikan wave (b), tetapi setelah wave (b) berakhir, PTBA akan turun lagi minimal ke 3450. Manfaatkan kenaikan ini untuk melakukan SoS.

Stock Recommendation for Today

EXCL: *Sell on strength – Sell area 2360-2400; Downside target 2100, 1850, 1500*



EXCL kemarin melemah dengan volume besar, ini mengkonfirmasi tampaknya EXCL sudah selesai membentuk wave (c) dari wave [iv]. Artinya, EXCL akan memulai *downtrend* jangka menengahnya. Silakan SoS EX~CL.

PT NISP Sekuritas
OCBC NISP Tower Lt. 21 (Head Office)
Jl. Prof. Dr. Satrio Kav. 25
Jakarta 12940 Indonesia
Phone. (021) 2935 2788 (hunting)
Fax. (021) 5794 4095
Email: info@nispsekuritas.com
Website: www.nispsekuritas.com

Branches	Address	Phone:	Fax:
Pluit Jakarta	Ruko Sentra Bisnis Blok C28 Jl. Pluit Sakti Raya No. 15 Jakarta Utara 14450	(021) 6667 5050 (hunting)	(021) 6667 5051

Rating Definitions

Buy on Weakness (BoW) : We expect this stock could be bought below the last price.
Trading Buy : We expect this stock could be bought at the last price.
Sell on Strength (SoS) : We expect this stock could be sold above the last price.
Trading Sell : We expect this stock could be sold at the last price.

DISCLAIMER

This report was produced by PT NISP Sekuritas, a member of the Indonesia Stock Exchange (IDX). The Information contained in this report has been obtained from public sources believed to be reliable and the options, analysis, forecasts, projections and expectations contained in this report are based on such information and are expressions of belief only. No representation or warranty, express or implied, is made that such information or opinion is accurate, complete or verified and it should not be relied upon as such. This report is provided solely for the information of clients of PT NISP Sekuritas who has to make their own investment decisions without reliance on this report. Neither PT NISP Sekuritas nor any officer or employee of PT NISP Sekuritas accept any liability whatsoever for any direct or consequential loss arising from any use of this report or its contents. PT NISP Sekuritas may be involved in transactions contrary to any opinions herein to make markets, or have positions in the securities recommended herein. PT NISP Sekuritas may seek or will seek investment banking or other business relationships with the companies within this report. This report is a copyright of PT NISP Sekuritas. For further information please contact our number 62-21-29352788 or fax 62-21-57944095.