

# ***NISP Daily Elliott Wave Research***

5 Desember 2017

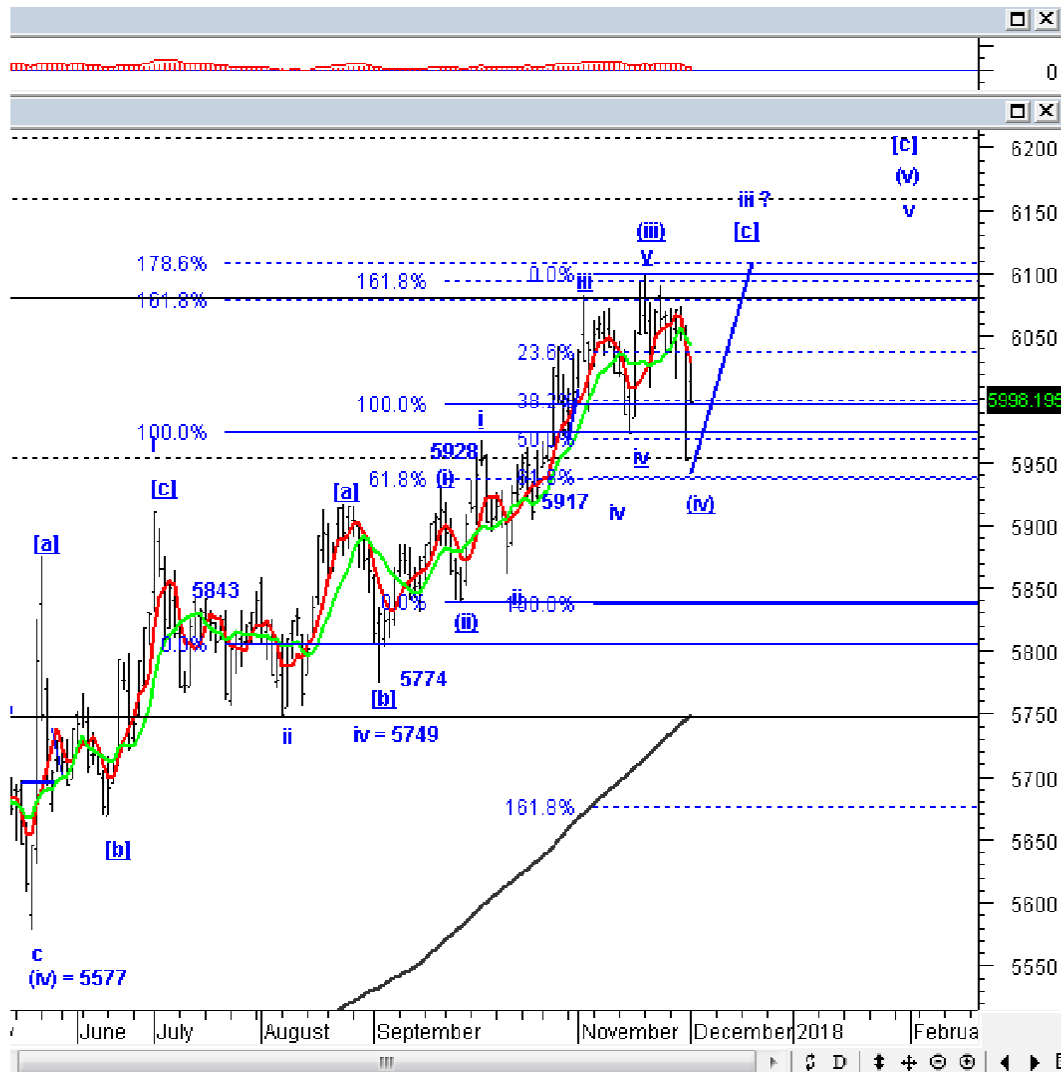


# Elliottician Overview

- Jakarta Composite Index *Elliott Wave Perspective*
  - *Short Term View (1-2 days): Bullish*
- *Stocks Recommendation for Today*
  - **LPPF**; *Buy on weakness – Buy area 9700-10000; TP 12000, 13000; SL break 9000*
  - **MBSS**; *Buy on weakness – Buy area 590-600; TP 875-900; SL break 550*
  - **MNCN**; *Buy on weakness – Buy area 1250-1200; TP 1500, 1700; SL break 1150*
  - **PTBA**; *Sell on strength – Sell area 11500-11700; Target koreksi 9000-8500*
  - **MEDC**; *Take profit – Sell area 1000-1050; Target koreksi 890, 730*

# Jakarta Composite Index

## Elliott Wave Perspective

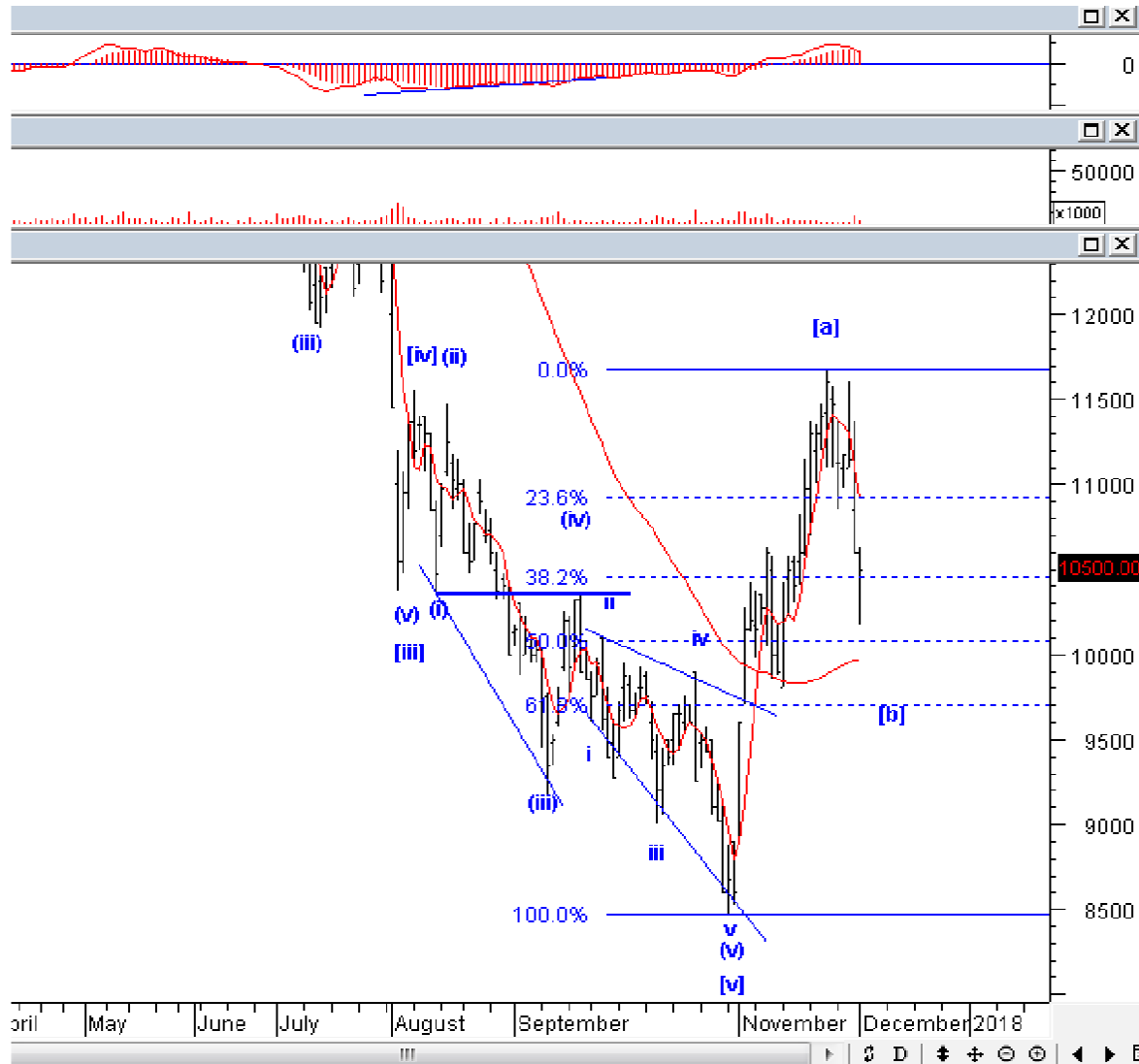


Selamat pagi, IHSG kemarin turun jika dibandingkan harga *opening*, tetapi koreksi IHSG masih wajar selama tidak turun di bawah 5910. Idealnya, IHSG akan segera *break resistance* minor di level 6030-6043 di minggu ini. Jika IHSG berhasil naik ke atas 6043 lagi, IHSG konfirm akan mencetak *all time high* segera.

Support : 5940-5960, 5890-5910  
Resisten : 6100, 6130

# Stock Recommendation for Today

**LPPF:** Buy on weakness – Buy area 9700-10000; TP 12000, 13000; SL break 9000



LPPF harusnya konfirm sedang membentuk wave [b], dengan target koreksi ideal di 9700. Manfaatkan koreksi untuk mulai akumulasi LPPF kembali.

# Stock Recommendation for Today

**MBSS;** *Buy on weakness – Buy area 590-600; TP 875-900; SL break 550*



Koreksi yang terjadi kemarin, seharusnya masih sehat, karena volume yang terbentuk juga semakin kecil. Idealnya, MBSS sedang membentuk wave [ii] dari wave 5. Silakan menambah posisi pada MBSS.

# Stock Recommendation for Today

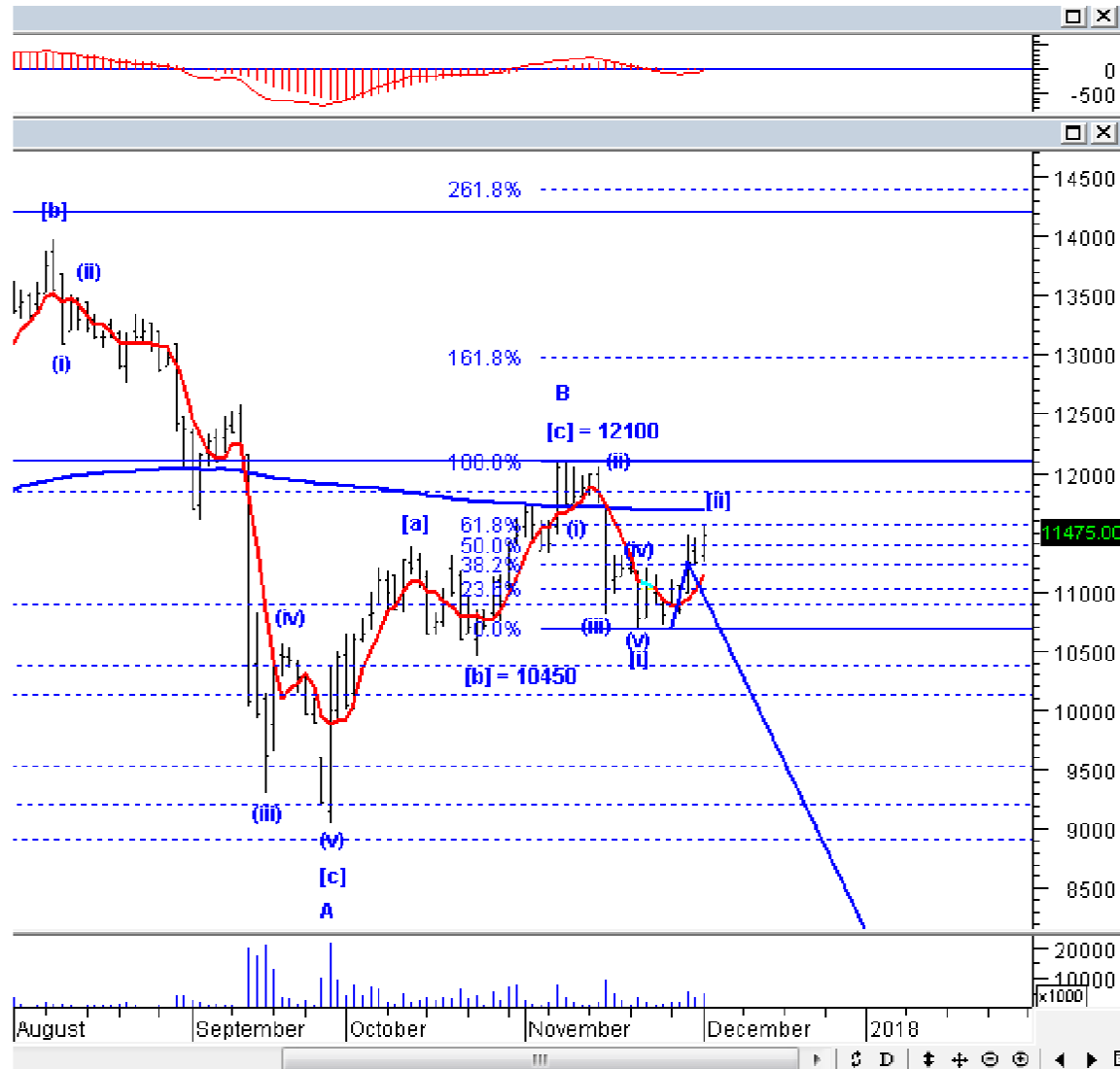
**MNCN**; Buy on weakness – Buy area 1250-1200; TP 1500, 1700; SL break 1150



MNCN kemarin turun lebih dalam dari 1320, yang berarti mengkonfirmasi bahwa MNCN sedang membentuk *wave* [v]. Meskipun demikian, kami melihat *downside risk* seharusnya tidak lebih dari 1200. Silakan menambah posisi hanya jika MNCN turun lagi ke bawah 1250.

# Stock Recommendation for Today

**PTBA:** *Sell on strength – Sell area 11500-11700; Target koreksi 9000-8500*



PTBA kemarin memang menguat dengan volume besar, tetapi kenaikan PTBA hanya bagian dari *wave [ii]*. Silakan SoS dan tetap *clear all position* pada PTBA.

# Stock Recommendation for Today

**MEDC;** *Take profit – Sell area 1000-1050; Target koreksi 890, 730*



MEDC harusnya sudah konfirm berada di akhir wave v dari wave (v). Silakan *takeprofit* MEDC, idealnya MEDC akan segera turun agresif.



**PT NISP Sekuritas**  
**OCBC NISP Tower Lt. 21 (Head Office)**  
Jl. Prof. Dr. Satrio Kav. 25  
Jakarta 12940 Indonesia  
Phone. (021) 2935 2788 (hunting)  
Fax. (021) 5794 4095  
Email: [info@nispsekuritas.com](mailto:info@nispsekuritas.com)  
Website: [www.nispsekuritas.com](http://www.nispsekuritas.com)

<b>Branches</b>	<b>Address</b>	<b>Phone:</b>	<b>Fax:</b>
<b>Pluit Jakarta</b>	Ruko Sentra Bisnis Blok C28 Jl. Pluit Sakti Raya No. 15 Jakarta Utara 14450	(021) 6667 5050 (hunting)	(021) 6667 5051

### **Rating Definitions**

- Buy on Weakness (BoW) : We expect this stock could be bought below the last price.  
Trading Buy : We expect this stock could be bought at the last price.  
Sell on Strength (SoS) : We expect this stock could be sold above the last price.  
Trading Sell : We expect this stock could be sold at the last price.

### **DISCLAIMER**

This report was produced by PT NISP Sekuritas, a member of the Indonesia Stock Exchange (IDX). The Information contained in this report has been obtained from public sources believed to be reliable and the options, analysis, forecasts, projections and expectations contained in this report are based on such information and are expressions of belief only. No representation or warranty, express or implied, is made that such information or opinion is accurate, complete or verified and it should not be relied upon as such. This report is provided solely for the information of clients of PT NISP Sekuritas who has to make their own investment decisions without reliance on this report. Neither PT NISP Sekuritas nor any officer or employee of PT NISP Sekuritas accept any liability whatsoever for any direct or consequential loss arising from any use of this report or its contents. PT NISP Sekuritas may be involved in transactions contrary to any opinions herein to make markets, or have positions in the securities recommended herein. PT NISP Sekuritas may seek or will seek investment banking or other business relationships with the companies within this report. This report is a copyright of PT NISP Sekuritas. For further information please contact our number 62-21-29352788 or fax 62-21-57944095.