

NISP Daily Elliott Wave Research

4 October 2018

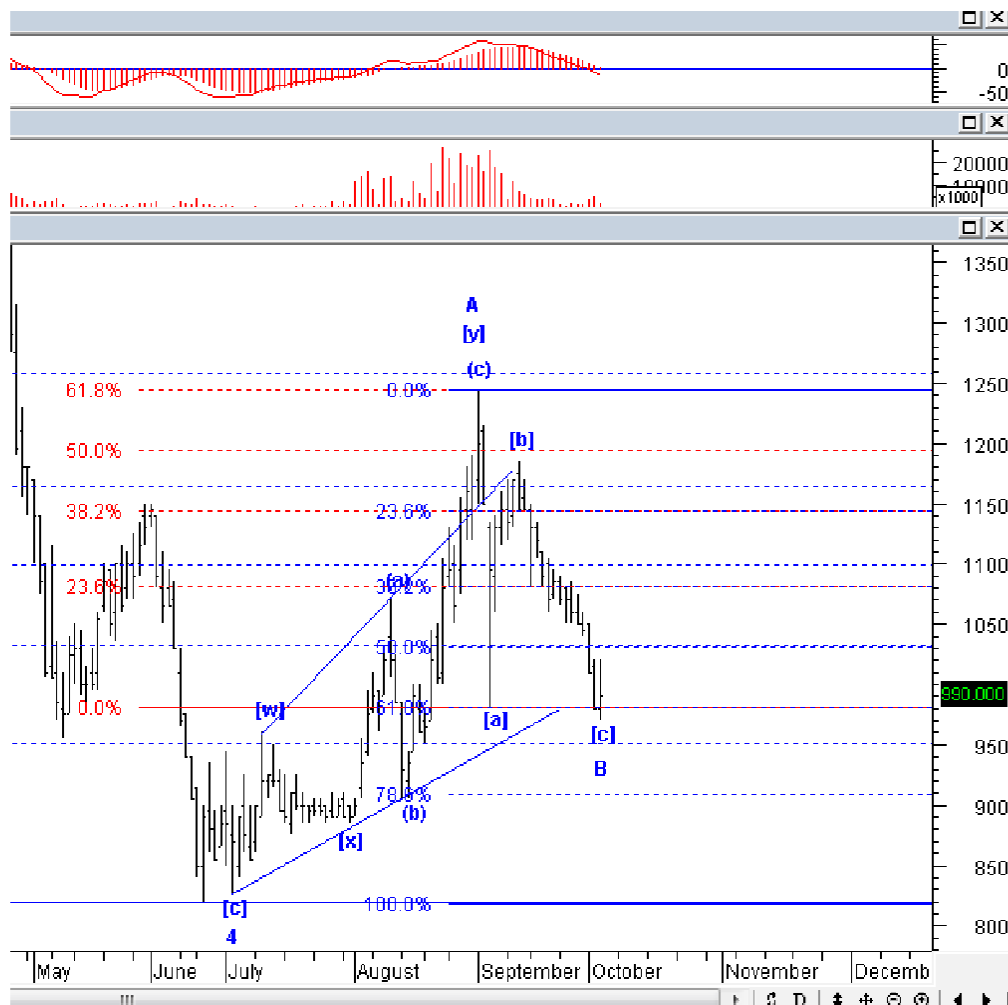


Elliottician Overview

- Jakarta Composite Index *Elliott Wave Perspective*
 - *Short Term View (1-2 days): Bullish*
- *Stocks Recommendation for Today*
 - **TBLA**; *Buy on weakness – Buy area 940-970; TP 1030, 1080, 1140, 1250; SL 900*
 - **ERAA**; *Buy on weakness - Buy area 2200-2250; TP 2400, 2510, 2720; SL 2070*
 - **PTPP**; *Buy on weakness - Buy area 1590-1610; TP 1750, 1900, 1950; SL 1530*
 - **PGAS**; *Sell on strength; Sell area 2330-2350; Downside target 2050, 1850-1900*
 - **PNLF**; *Sell on strength; Sell area 274-284; Downside target 240, 226*

Stock Recommendation for Today

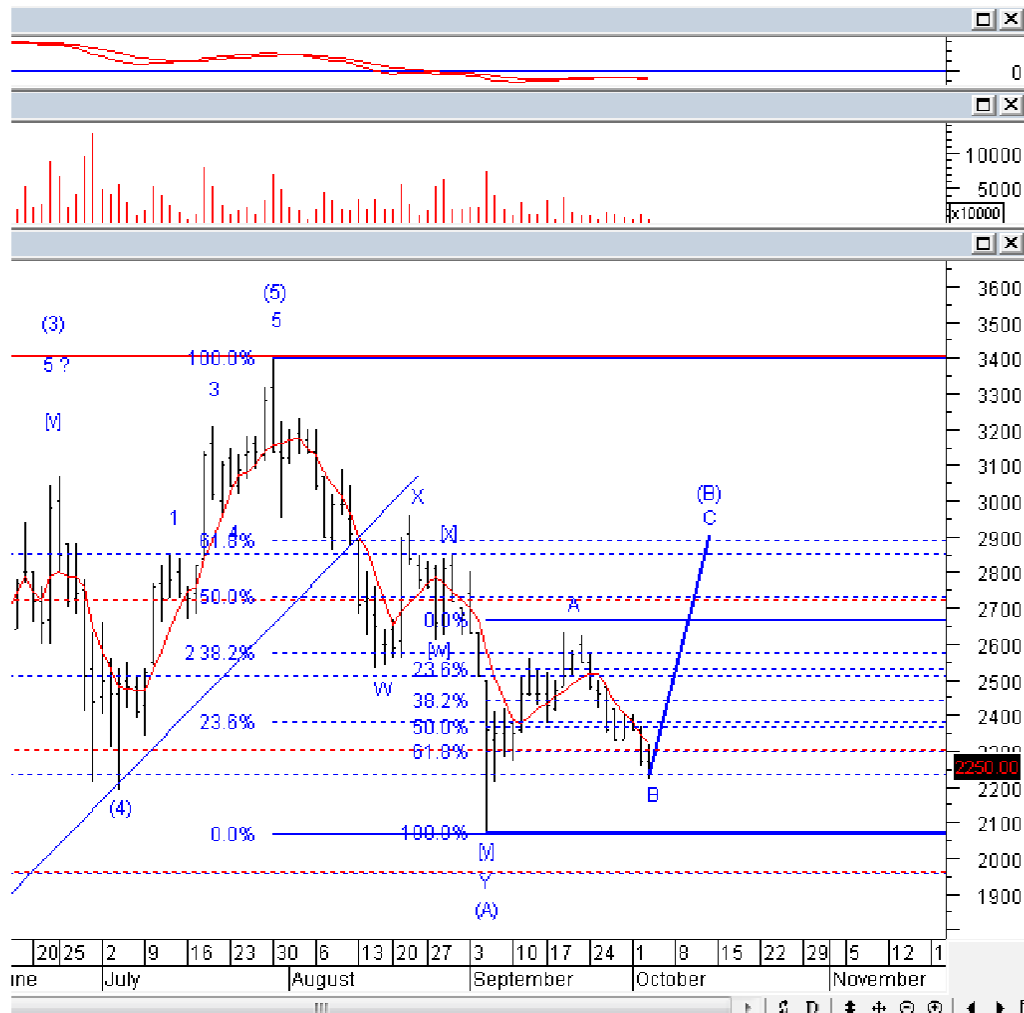
TBLA: *Buy on weakness* – Buy area 940-970; TP 1030, 1080, 1140, 1250; SL 900



Pagi ini, kami rekomendasikan BoW TBLA, saham emiten CPO ini seharusnya sudah berada di akhir *downtrend* dari wave [c] dari wave B. Lakukan pembelian secara bertahap pada area beli yang kami berikan, batasi resiko jika TBLA turun ke bawah level 900.

Stock Recommendation for Today

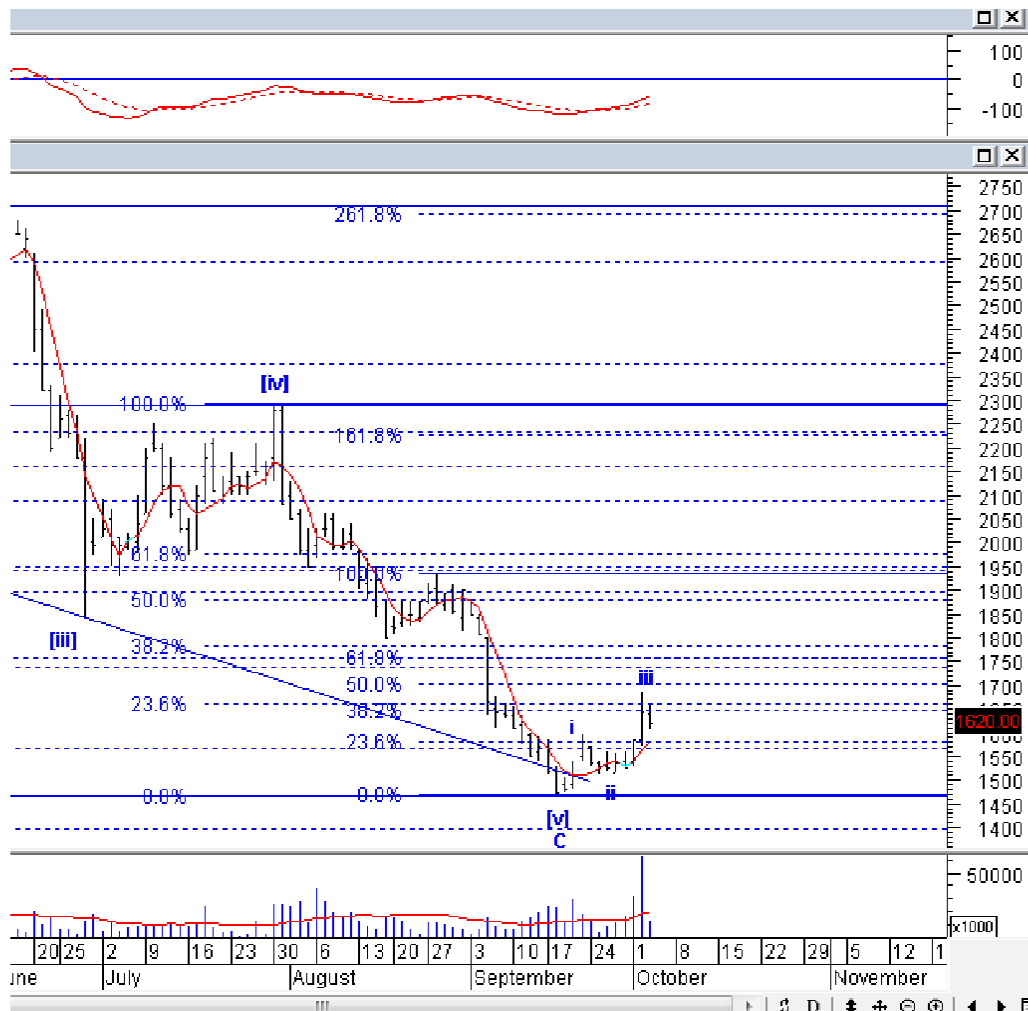
ERAA: Buy on weakness - Buy area 2200-2250; TP 2400, 2510, 2720; SL 2070



ERAA pernah kami rekomendasikan beli, pagi ini juga masih kami rekomendasikan beli. Posisi ERAA semakin mendekati akhir *downtrend* pendek dari *wave* B. Silakan BoW atau menambah posisi pada ERAA, usahakan harga rata-rata pembelian bisa dijaga di bawah 2350.

Stock Recommendation for Today

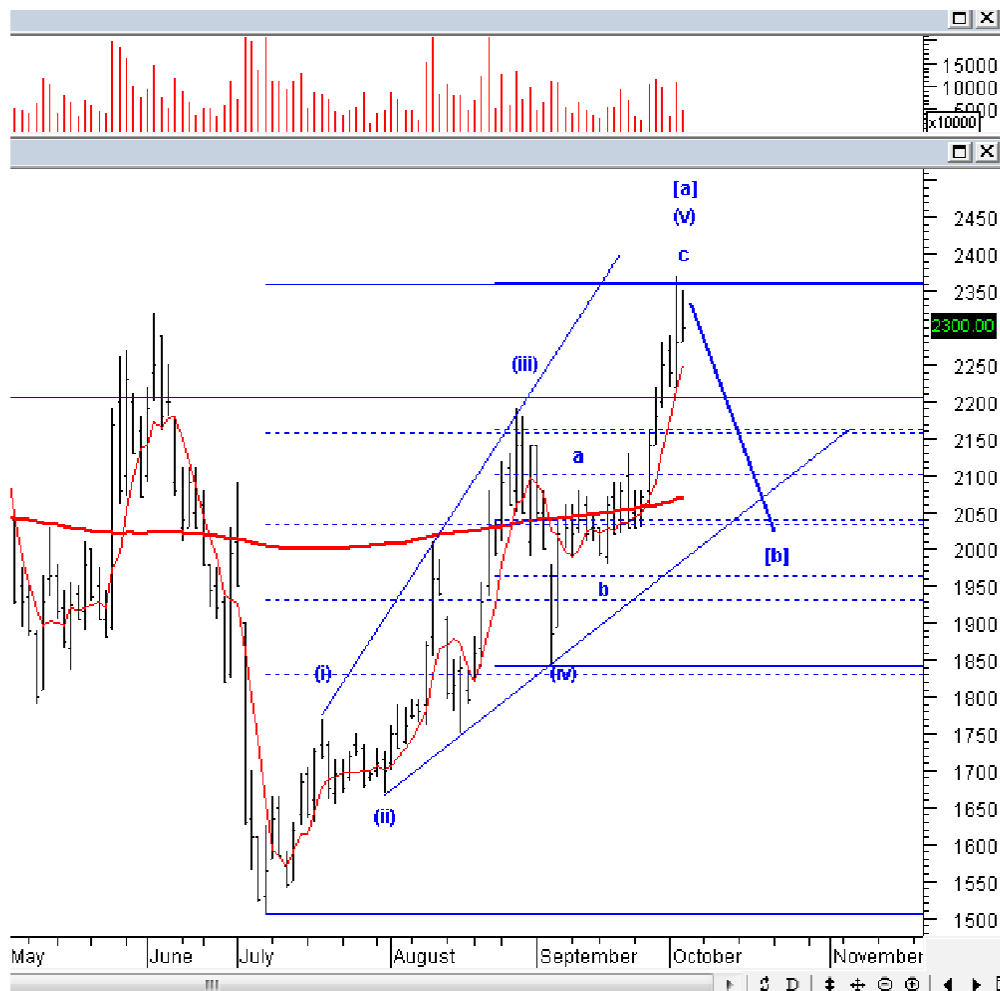
PTPP: *Buy on weakness - Buy area 1590-1610; TP 1750, 1900, 1950; SL 1530*



PTPP harusnya masih berada pada fase koreksi wajar, di wave iv. Harusnya hari ini menjadi hari terakhir koreksi PTPP, setelah itu PTPP akan cenderung menguat lagi. Manfaatkan koreksi untuk tetap BoW atau menambah posisi pada PTPP.

Stock Recommendation for Today

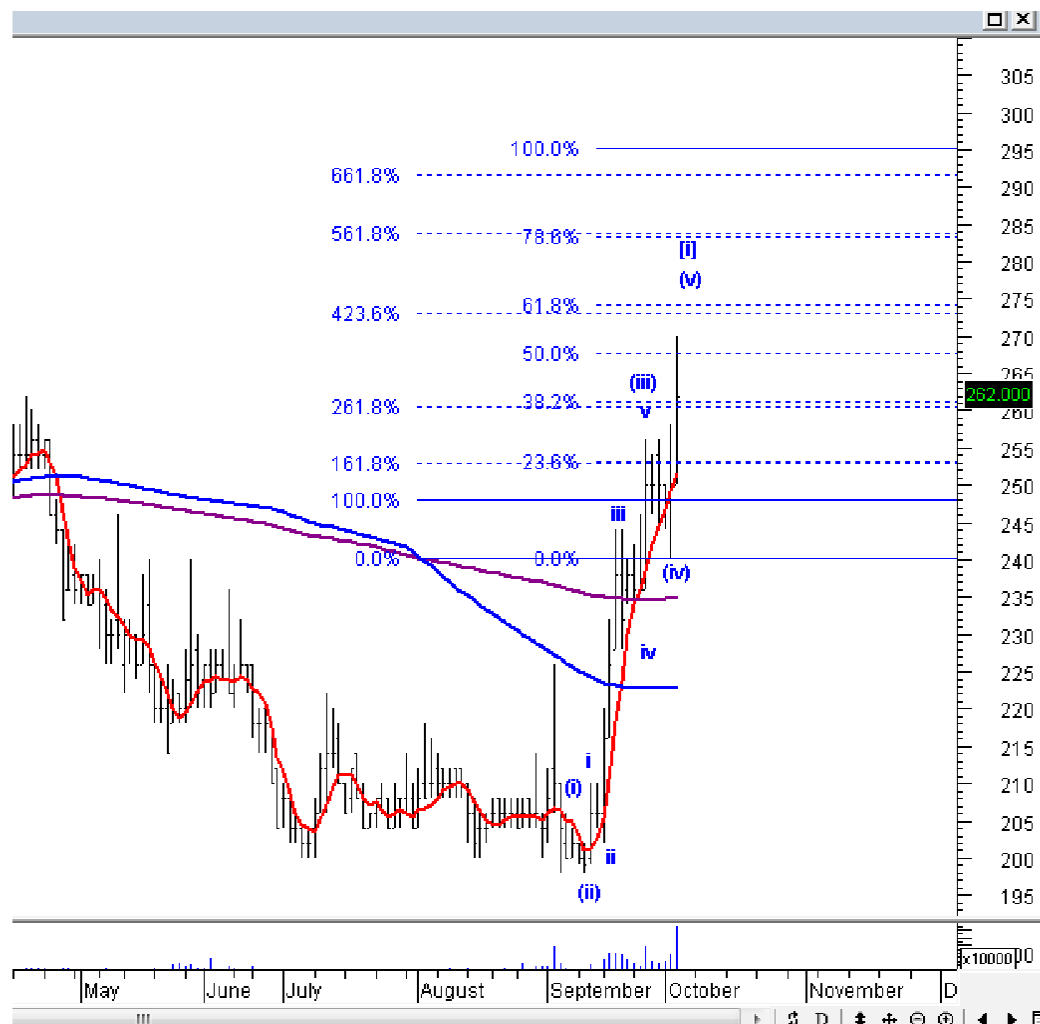
PGAS: *Sell on strength; Sell area 2330-2350; Downside target 2050, 1850-1900*



PGAS sudah berada di akhir *uptrend* jangka menengah dari *wave c* dari *wave (v)* dari *wave [a]*, artinya PGAS idealnya akan terkoreksi minimal ke 2050, dan ideal kembali lagi ke 1850-1900. Oleh karena itu, ada baiknya untuk SoS dan hindari PGAS terlebih dahulu.

Stock Recommendation for Today

PNLF: *Sell on strength; Sell area 274-284; Downside target 240, 226*



PNLF memang betul kemarin menguat dengan volume besar, tetapi penguatan ini sebetulnya sudah memasuki akhir *uptrend* jangka menengah dari wave (v) dari wave [i]. Silakan SoS dan hindari PNLF terlebih dahulu.

PT NISP Sekuritas
OCBC NISP Tower Lt. 21 (Head Office)
Jl. Prof. Dr. Satrio Kav. 25
Jakarta 12940 Indonesia
Phone. (021) 2935 2788 (hunting)
Fax. (021) 5794 4095
Email: info@nispsekuritas.com
Website: www.nispsekuritas.com

Branches	Address	Phone:	Fax:
Pluit Jakarta	Ruko Sentra Bisnis Blok C28 Jl. Pluit Sakti Raya No. 15 Jakarta Utara 14450	(021) 6667 5050 (hunting)	(021) 6667 5051

Rating Definitions

- Buy on Weakness (BoW) : We expect this stock could be bought below the last price.
Trading Buy : We expect this stock could be bought at the last price.
Sell on Strength (SoS) : We expect this stock could be sold above the last price.
Trading Sell : We expect this stock could be sold at the last price.

DISCLAIMER

This report was produced by PT NISP Sekuritas, a member of the Indonesia Stock Exchange (IDX). The Information contained in this report has been obtained from public sources believed to be reliable and the options, analysis, forecasts, projections and expectations contained in this report are based on such information and are expressions of belief only. No representation or warranty, express or implied, is made that such information or opinion is accurate, complete or verified and it should not be relied upon as such. This report is provided solely for the information of clients of PT NISP Sekuritas who has to make their own investment decisions without reliance on this report. Neither PT NISP Sekuritas nor any officer or employee of PT NISP Sekuritas accept any liability whatsoever for any direct or consequential loss arising from any use of this report or its contents. PT NISP Sekuritas may be involved in transactions contrary to any opinions herein to make markets, or have positions in the securities recommended herein. PT NISP Sekuritas may seek or will seek investment banking or other business relationships with the companies within this report. This report is a copyright of PT NISP Sekuritas. For further information please contact our number 62-21-29352788 or fax 62-21-57944095.