

# ***NISP Daily Elliott Wave Research***

3 July 2018

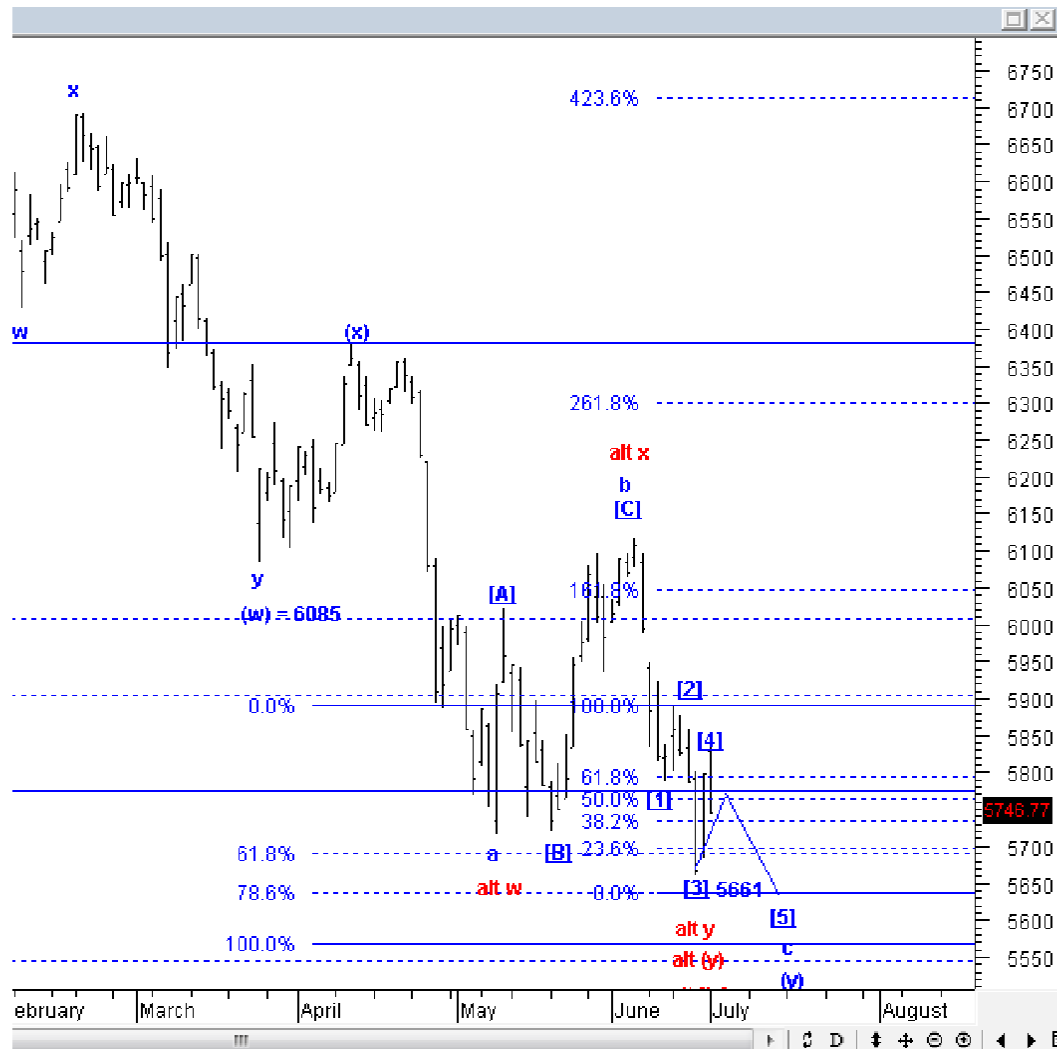


# Elliottician Overview

- Jakarta Composite Index *Elliott Wave Perspective*
  - *Short Term View (1-2 days): Bullish*
- *Stocks Recommendation for Today*
  - **ASII**; *Accumulate buy – Buy area 6000-6250; TP 6600, 7000; SL break 5900*
  - **ADRO**; *Buy on weakness – Buy area 1700-1750; TP 1980-2000, 2050, 2150; SL break 1650*
  - **PGAS**; *Buy on weakness – Buy area 1940-1950; TP 2350, 2700-2750; SL break 1820*
  - **ERAA**; *Sell on strength – Sell area 2600-2650; Downside target 2150, 1850*
  - **PTBA**; *Sell on strength – Sell area 4000-4100; Downside target 3000, 3450*

# Jakarta Composite Index

## Elliott Wave Perspective



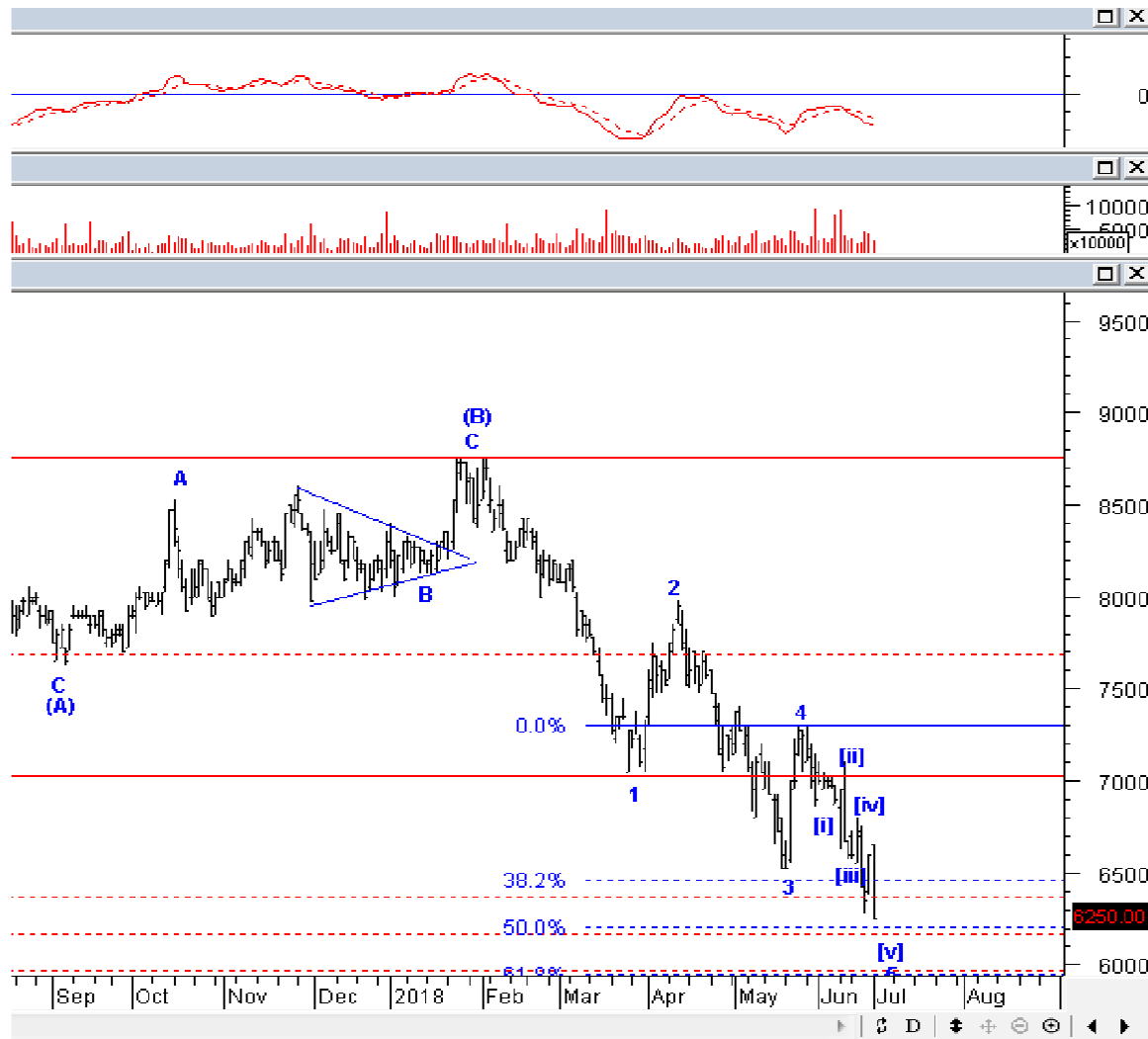
Koreksi yang terjadi kemarin dihitung masih normal, IHSG masih mampu untuk menguat lagi. Tetapi, jika malah IHSG turun ke bawah 5661, IHSG mengkonfirmasi sedang berada di wave [5] dari wave c, jika ini yang terjadi pun, koreksi yang terjadi harusnya tidak terlalu dalam. Resisten penting yang perlu dicermati ada di level 5891, jika IHSG *break* level ini, IHSG berpotensi untuk kembali naik menuju 6000 lagi.

Support : 5660, 5630, 5540-5560

Resisten : 5730, 5800

# Stock Recommendation for Today

**ASII:** Accumulate buy – Buy area 6000-6250; TP 6600, 7000; SL break 5900



Koreksi yang terjadi pada ASII kemarin adalah akhir dari *downtrend* jangka menengah. Kami rekomendasikan untuk mulai melakukan akumulasi beli pada ASII, mengingat di harga sekarang, valuasi ASII sudah sangat murah. Terlihat pula pada MACD adanya *divergence*, yang mengkonfirmasi bahwa ASII sedang berada di akhir *wave* [v] dari *wave* 5 dari *wave* (C).

# Stock Recommendation for Today

**ADRO:** *Buy on weakness – Buy area 1700-1750; TP 1980-2000, 2050, 2150; SL break 1650*



ADRO kemarin terkoreksi normal, dan posisi ADRO masih berada di wave [c] dari wave B. Silakan BoW ADRO.

# Stock Recommendation for Today

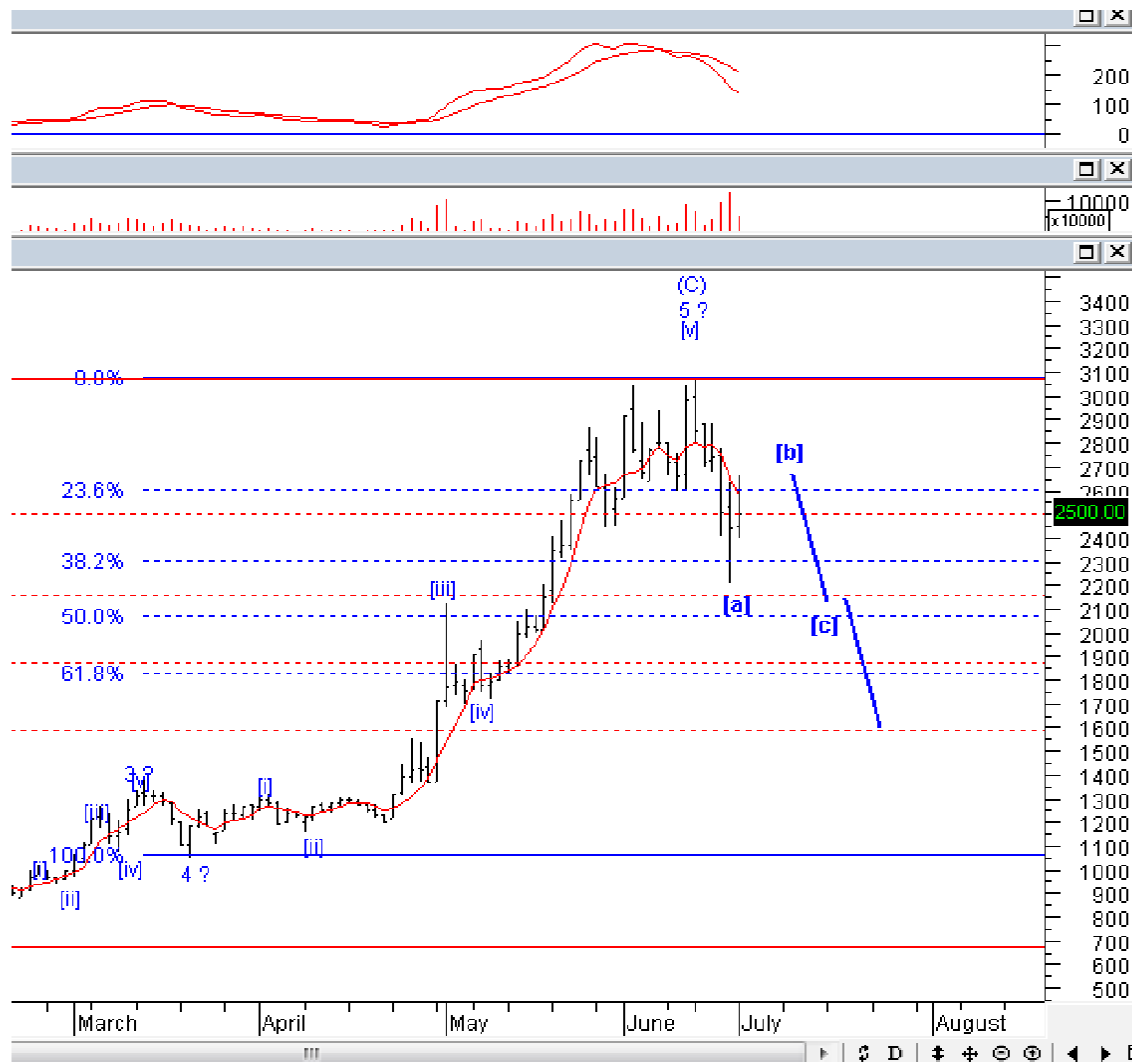
**PGAS:** Buy on weakness – Buy area 1940-1950; TP 2350, 2700-2750; SL break 1820



Setelah sempat menguat di akhir minggu kemarin, PGAS kemarin terkoreksi. Koreksi ini masih wajar. Selama PGAS tidak turun ke bawah 1820, wave [b] dapat diasumsikan sudah selesai terbentuk. Silakan BoW, idealnya PGAS akan menguat dan selesaikan target wave [c] minimal di 2350, dan ideal di 2700-2750.

# Stock Recommendation for Today

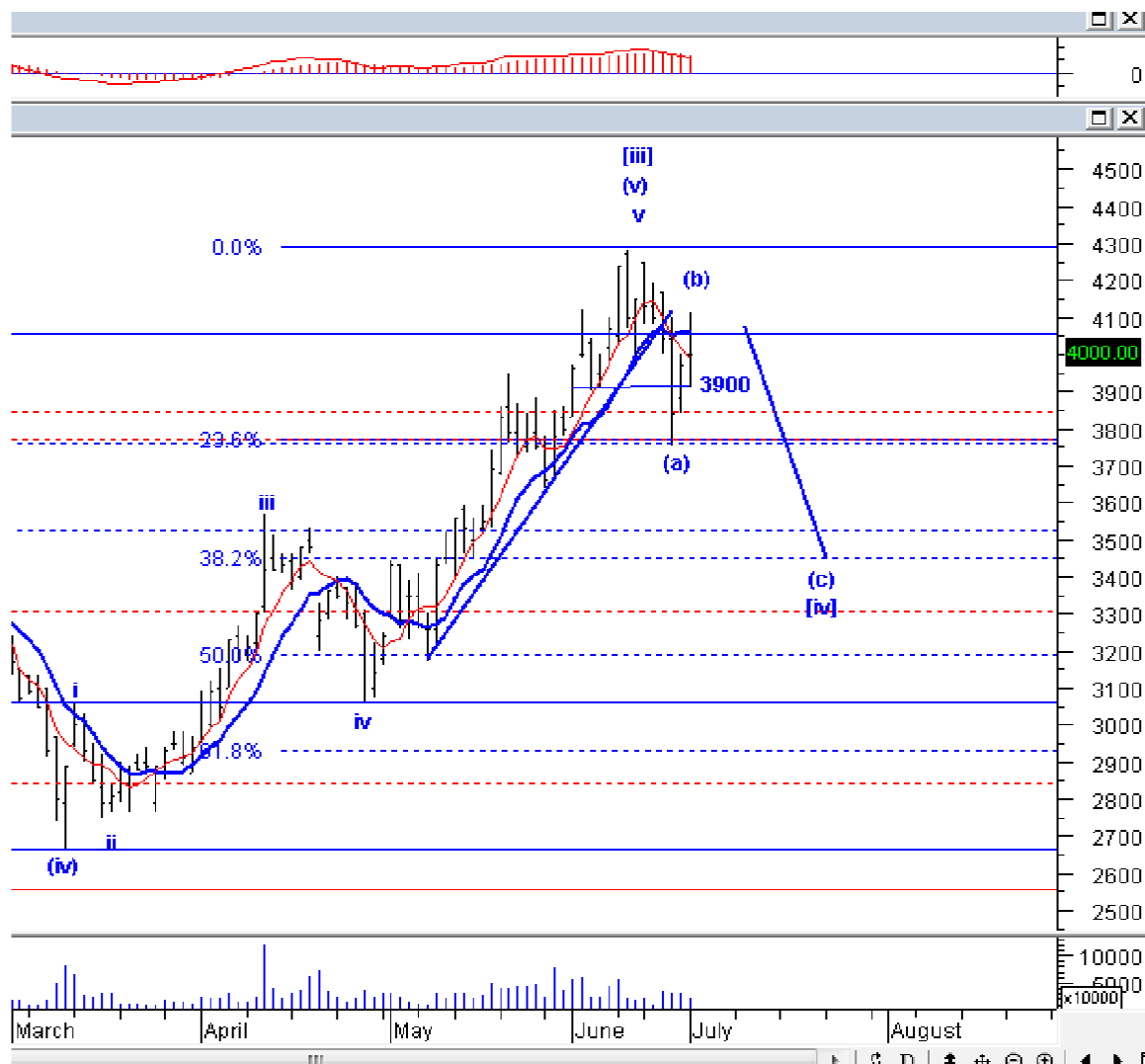
**ERAA:** *Sell on strength – Sell area 2600-2650; Downside target 2150, 1850*



ERAA harusnya sudah berada di akhir wave [b], dan sangat rawan terkoreksi. Silakan SoS ERAA.

## Stock Recommendation for Today

**PTBA:** *Sell on strength – Sell area 4000-4100; Downside target 3000, 3450*



PTBA juga sudah berada di akhir wave (b), sehingga rawan terkoreksi, apalagi jika turun ke bawah 3000. Silakan SoS PTBA.



**PT NISP Sekuritas**  
**OCBC NISP Tower Lt. 21 (Head Office)**  
Jl. Prof. Dr. Satrio Kav. 25  
Jakarta 12940 Indonesia  
Phone. (021) 2935 2788 (hunting)  
Fax. (021) 5794 4095  
Email: [info@nispsekuritas.com](mailto:info@nispsekuritas.com)  
Website: [www.nispsekuritas.com](http://www.nispsekuritas.com)

<b>Branches</b>	<b>Address</b>	<b>Phone:</b>	<b>Fax:</b>
<b>Pluit Jakarta</b>	Ruko Sentra Bisnis Blok C28 Jl. Pluit Sakti Raya No. 15 Jakarta Utara 14450	(021) 6667 5050 (hunting)	(021) 6667 5051

### **Rating Definitions**

- Buy on Weakness (BoW) : We expect this stock could be bought below the last price.  
Trading Buy : We expect this stock could be bought at the last price.  
Sell on Strength (SoS) : We expect this stock could be sold above the last price.  
Trading Sell : We expect this stock could be sold at the last price.

### **DISCLAIMER**

This report was produced by PT NISP Sekuritas, a member of the Indonesia Stock Exchange (IDX). The Information contained in this report has been obtained from public sources believed to be reliable and the options, analysis, forecasts, projections and expectations contained in this report are based on such information and are expressions of belief only. No representation or warranty, express or implied, is made that such information or opinion is accurate, complete or verified and it should not be relied upon as such. This report is provided solely for the information of clients of PT NISP Sekuritas who has to make their own investment decisions without reliance on this report. Neither PT NISP Sekuritas nor any officer or employee of PT NISP Sekuritas accept any liability whatsoever for any direct or consequential loss arising from any use of this report or its contents. PT NISP Sekuritas may be involved in transactions contrary to any opinions herein to make markets, or have positions in the securities recommended herein. PT NISP Sekuritas may seek or will seek investment banking or other business relationships with the companies within this report. This report is a copyright of PT NISP Sekuritas. For further information please contact our number 62-21-29352788 or fax 62-21-57944095.