

NISP Daily Elliott Wave Research

2 July 2018

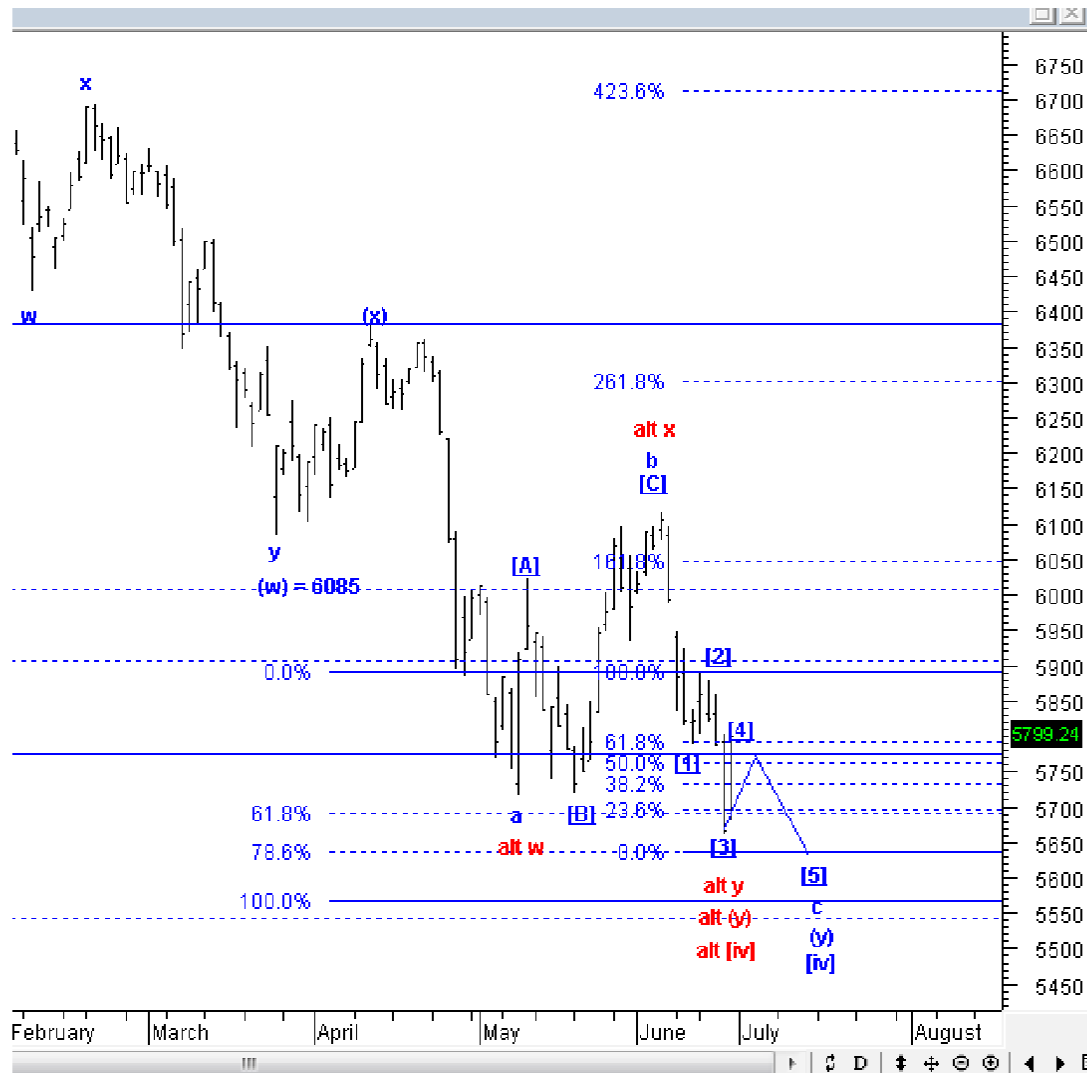


Elliottician Overview

- Jakarta Composite Index *Elliott Wave Perspective*
 - *Short Term View (1-2 days): Bullish*
- *Stocks Recommendation for Today*
 - **HMSP**; *Buy on weakness – Buy area 3500-3580; TP 4100, 4650; SL break 3350*
 - **ITMG**; *Buy on weakness – Buy area 22000-22350; TP 29000, 33300; SL break 21200*
 - **WIKA**; *Buy on weakness – Buy area 1250-1300; TP 1750-1800; SL break 1215*
 - **BBKP**; *Sell on strength – Sell area 360, 374-380; Downside target 320, 300, 280-284*
 - **BBTN**; *Sell on strength – Sell area 2540, 2640; Downside target 2250, 2050*

Jakarta Composite Index

Elliott Wave Perspective



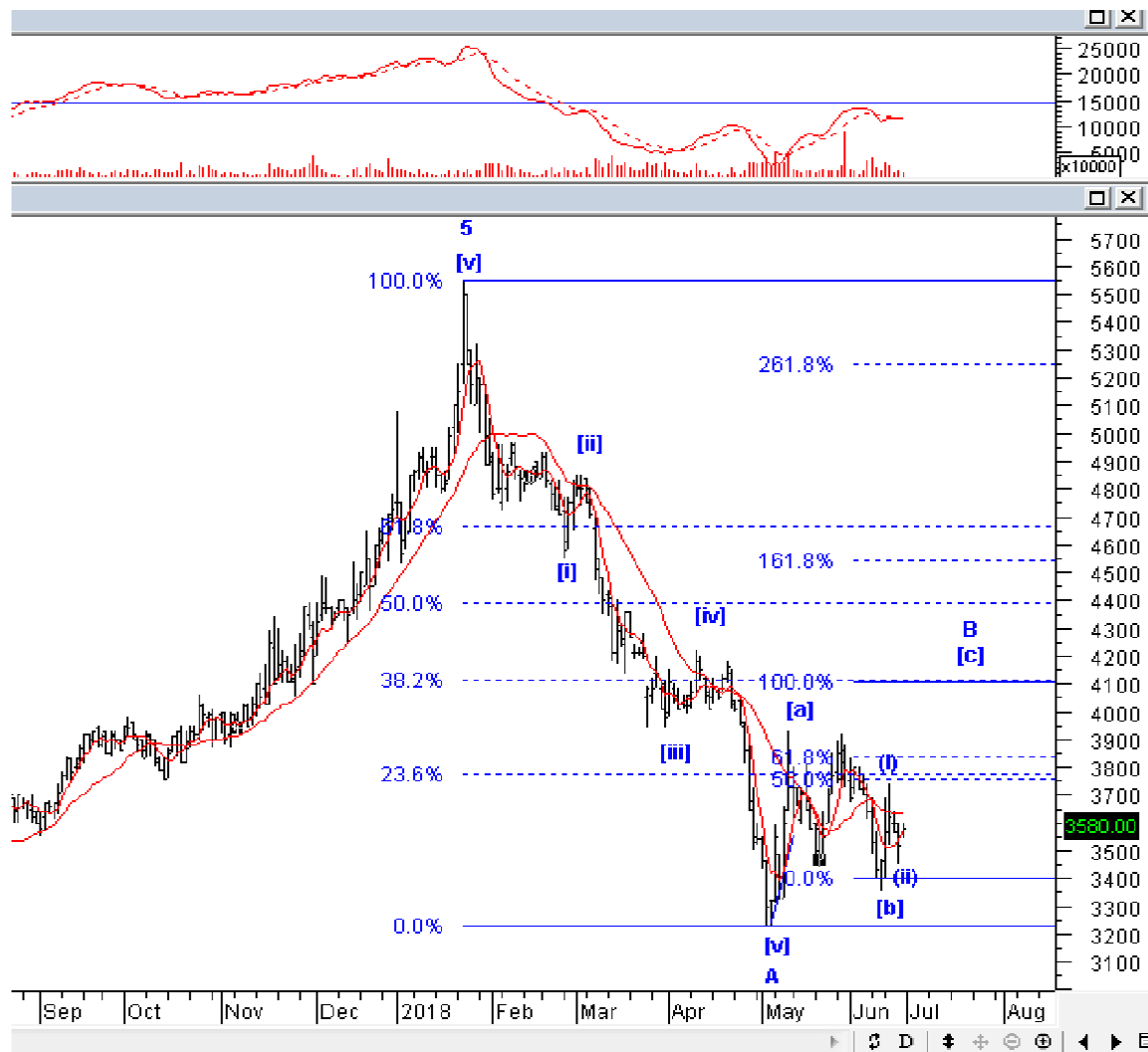
IHSG kemarin Jumat ditutup menguat agresif, dan seharusnya, selama IHSG belum menguat ke atas 5950, IHSG masih berpeluang untuk mencetak *new low* baru lagi dengan target koreksi idealnya di 5550-5550. Tetapi, jika IHSG berhasil naik di atas 5950, kemungkinan besar, IHSG sudah selesai membentuk koreksi jangka menengah, dan akan kembali naik lagi ke atas 6150 dalam waktu 1-2 bulan ini.

Support : 5660, 5630, 5540-5560

Resisten : 5730, 5800

Stock Recommendation for Today

HMSP: *Buy on weakness – Buy area 3500-3580; TP 4100, 4650; SL break 3350*



HMSP seharusnya sudah selesai membentuk *wave (ii)* dari *wave [c]*, artinya HMSP akan kembali menguat. Silakan BoW HMSP.

Stock Recommendation for Today

ITMG: Buy on weakness – Buy area 22000-22350; TP 29000, 33300; SL break 21200



ITMG harusnya sudah konfirm selesai membentuk wave [ii], dan berpeluang untuk menguat. Silakan BoW ITMG.

Stock Recommendation for Today

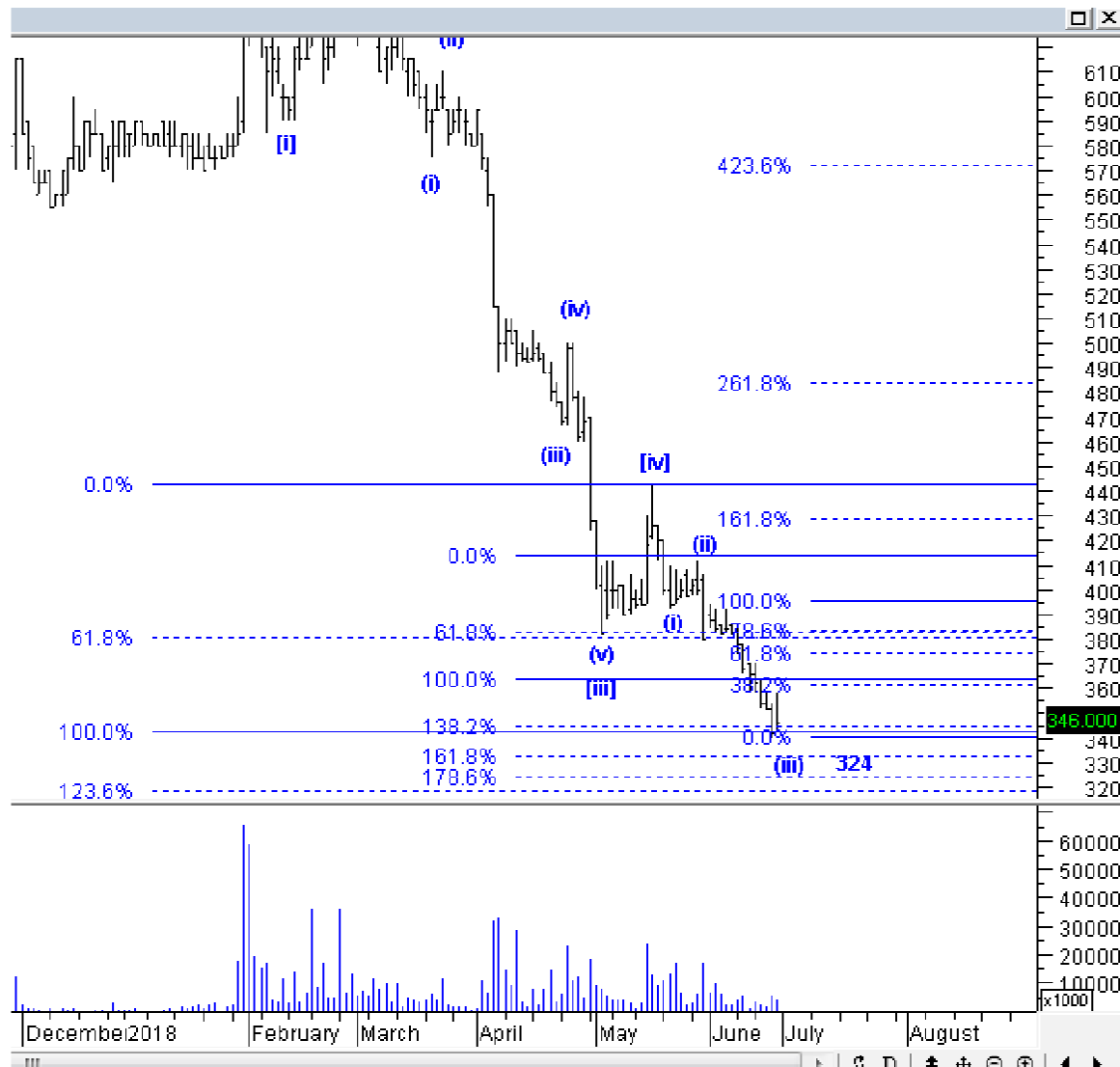
WIKA: Buy on weakness – Buy area 1250-1300; TP 1750-1800; SL break 1215



WIKA harusnya sudah berada di akhir koreksi wave 2, dan selama WIKA tidak turun ke bawah 1215, skenario ini masih *ontrack*, di mana WIKA masih mampu untuk naik ke 1750-1800 minimal.

Stock Recommendation for Today

BBKP: *Sell on strength – Sell area 360, 374-380; Downside target 320, 300, 280-284*



BBKP tampaknya akan segera melakukan *right issue*, tetapi, secara *Elliott Wave*, downside risk BBKP masih cukup jauh, yaitu minimal di 320, 300 dan ideal di 280-284. Untuk jangka pendek (2-3 hari), BBKP sangat mungkin untuk menguat dulu terbatas ke 360, dan maksimal ke 374-380. Manfaatkan kenaikan ini untuk SoS.

Stock Recommendation for Today

BBTN: *Sell on strength – Sell area 2540, 2640; Downside target 2250, 2050*



BBTN saat ini sedang berada di akhir wave [iii] dari wave C. Artinya, BBTN akan menguat, tetapi terbatas untuk selesaikan wave [iv]. Pergunakan kesempatan ini untuk SoS dan *clear all position*.

PT NISP Sekuritas
OCBC NISP Tower Lt. 21 (Head Office)
Jl. Prof. Dr. Satrio Kav. 25
Jakarta 12940 Indonesia
Phone. (021) 2935 2788 (hunting)
Fax. (021) 5794 4095
Email: info@nispsekuritas.com
Website: www.nispsekuritas.com

Branches	Address	Phone:	Fax:
Pluit Jakarta	Ruko Sentra Bisnis Blok C28 Jl. Pluit Sakti Raya No. 15 Jakarta Utara 14450	(021) 6667 5050 (hunting)	(021) 6667 5051

Rating Definitions

Buy on Weakness (BoW) : We expect this stock could be bought below the last price.
Trading Buy : We expect this stock could be bought at the last price.
Sell on Strength (SoS) : We expect this stock could be sold above the last price.
Trading Sell : We expect this stock could be sold at the last price.

DISCLAIMER

This report was produced by PT NISP Sekuritas, a member of the Indonesia Stock Exchange (IDX). The Information contained in this report has been obtained from public sources believed to be reliable and the options, analysis, forecasts, projections and expectations contained in this report are based on such information and are expressions of belief only. No representation or warranty, express or implied, is made that such information or opinion is accurate, complete or verified and it should not be relied upon as such. This report is provided solely for the information of clients of PT NISP Sekuritas who has to make their own investment decisions without reliance on this report. Neither PT NISP Sekuritas nor any officer or employee of PT NISP Sekuritas accept any liability whatsoever for any direct or consequential loss arising from any use of this report or its contents. PT NISP Sekuritas may be involved in transactions contrary to any opinions herein to make markets, or have positions in the securities recommended herein. PT NISP Sekuritas may seek or will seek investment banking or other business relationships with the companies within this report. This report is a copyright of PT NISP Sekuritas. For further information please contact our number 62-21-29352788 or fax 62-21-57944095.