

NISP Daily Elliott Wave Research

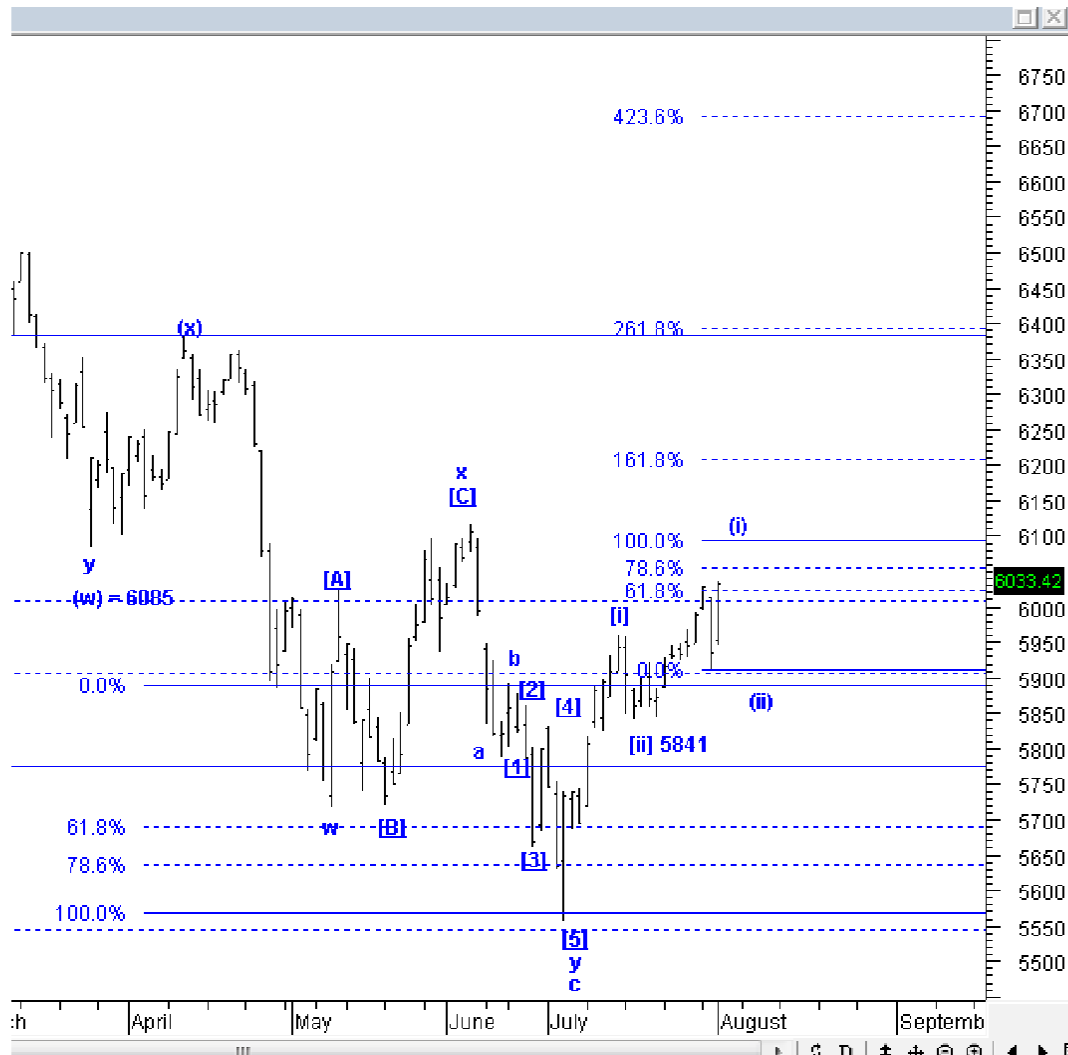
2 August 2018

Elliottician Overview

- Jakarta Composite Index *Elliott Wave Perspective*
 - *Short Term View (1-2 days): Bullish*
- *Stocks Recommendation for Today*
 - **BBRI**; *Add position – Buy 3140-3170; TP 3450, 3650; SL 3050*
 - **INDF**; *Buy on weakness – Buy area 6375-6425; TP 6750, 7200, 7375, 7525; SL 6250*
 - **BBTN**; *Buy on weakness – Buy area 2440-2460; TP 2750, 2800, 3000; SL break 2330*
 - **PTBA**; *Sell on strength – Sell area 4550-4580; Downside target 4220, 3750*
 - **CPIN**; *Sell on strength – Sell area 4850-4950; Downside target 4275, 4050*

Jakarta Composite Index

Elliott Wave Perspective



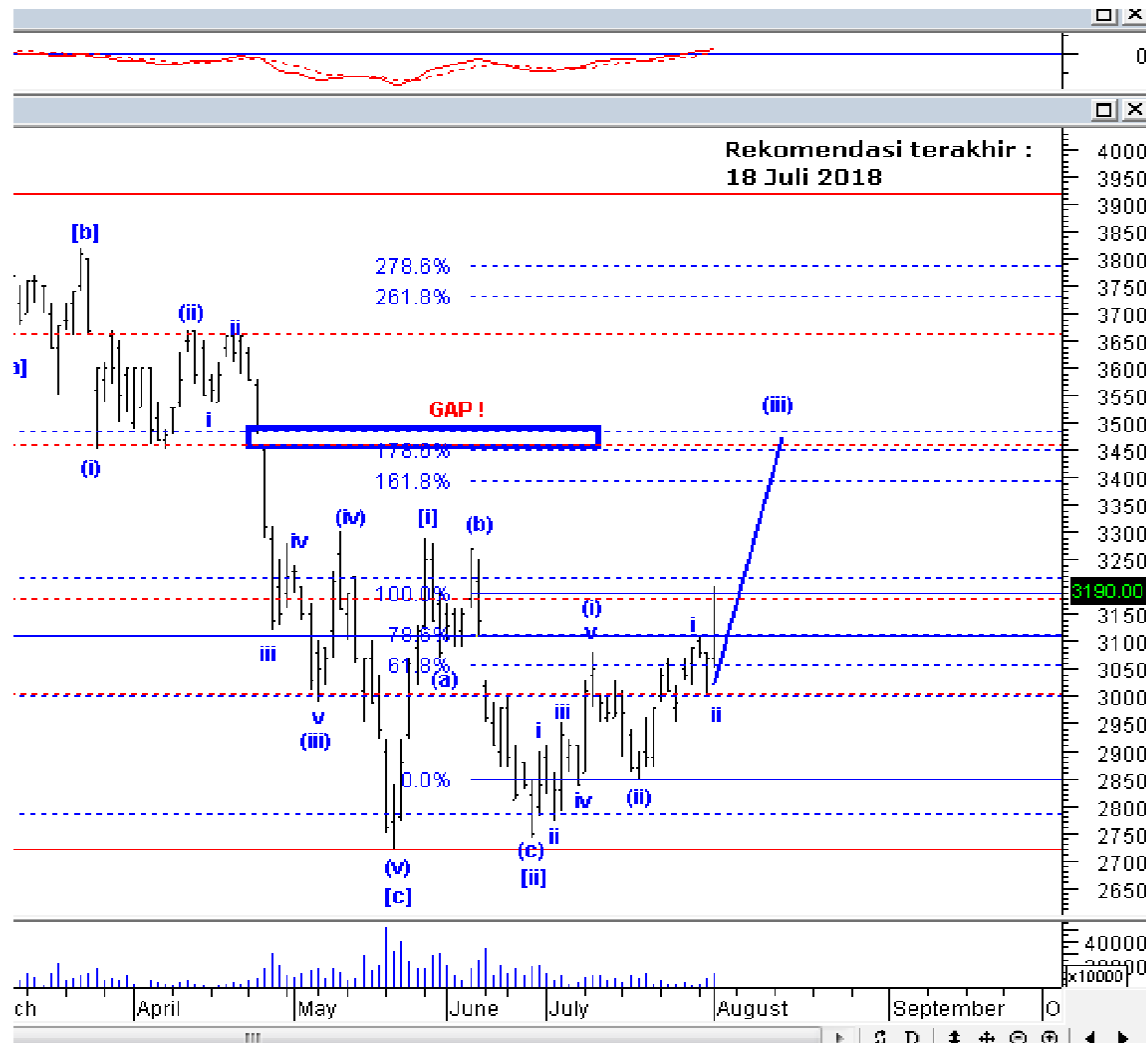
IHSG kemarin menguat ke level 6033, yang harusnya ini adalah bagian dari wave v dari wave (i) yang membentuk *leading diagonal*. Target akhir wave (i) tampaknya ada di sekitaran 6050-6100, setelah itu, kami melihat IHSG rawan terkoreksi lagi menuju 5900-5850.

Support : 5900, 5810

Resisten : 6050, 6090

Stock Recommendation for Today

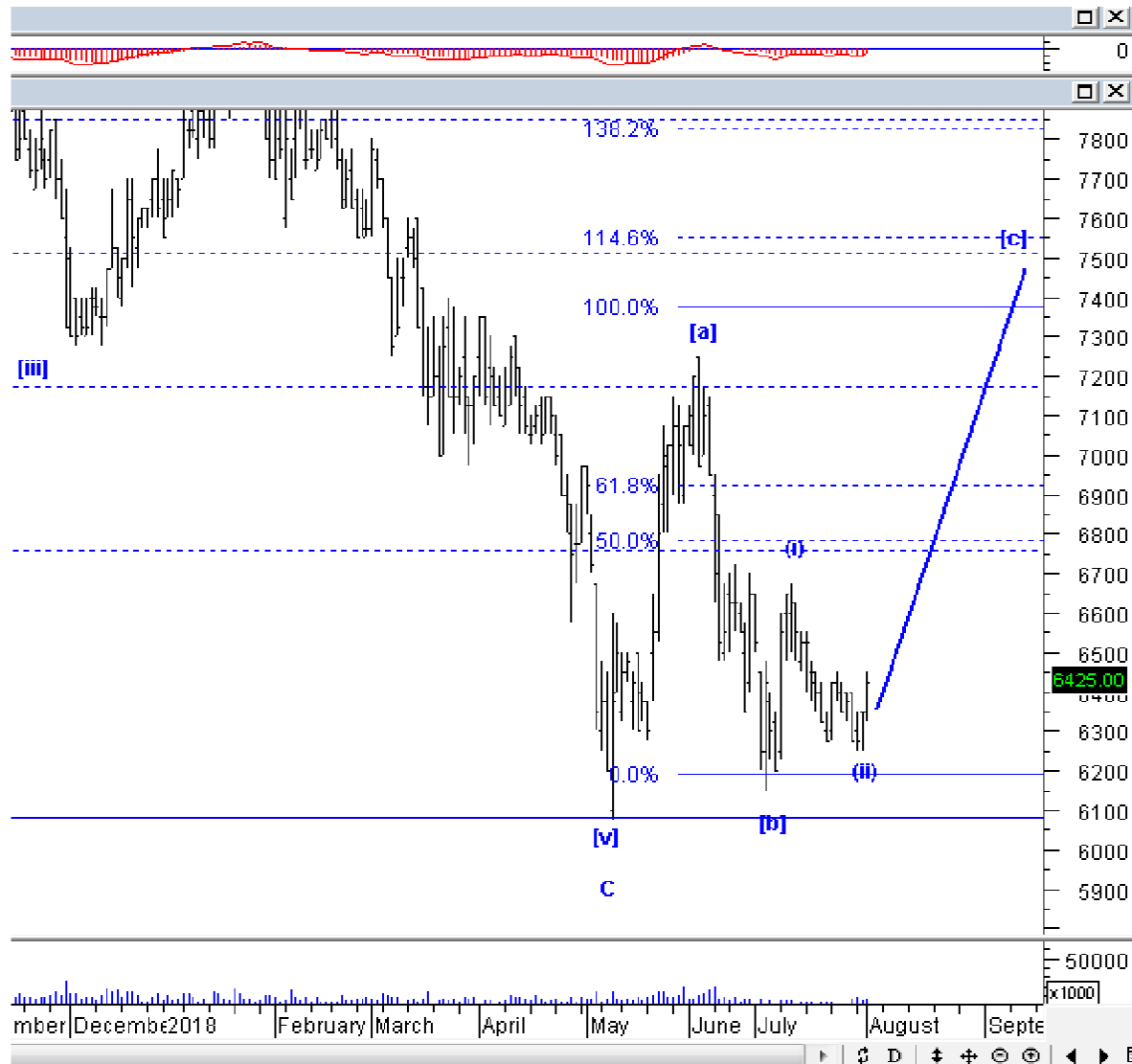
BBRI: Add position – Buy 3140-3170; TP 3450, 3650; SL 3050



BBRI pernah kami rekomendasikan di tanggal 18 Juli, dan kemarin BBRI menguat agresif, ini mengkonfirmasi bahwa BBRI sudah berada di wave iii dari wave (iii). Silakan menambah posisi pada BBRI.

Stock Recommendation for Today

INDF: Buy on weakness – Buy area 6375-6425; TP 6750, 7200, 7375, 7525; SL 6250



INDF kemarin menguat dengan volume besar, ini mengkonfirmasi bahwa INDF sudah berada di wave (iii) dari wave [c]. Silakan BoW INDF.

Stock Recommendation for Today

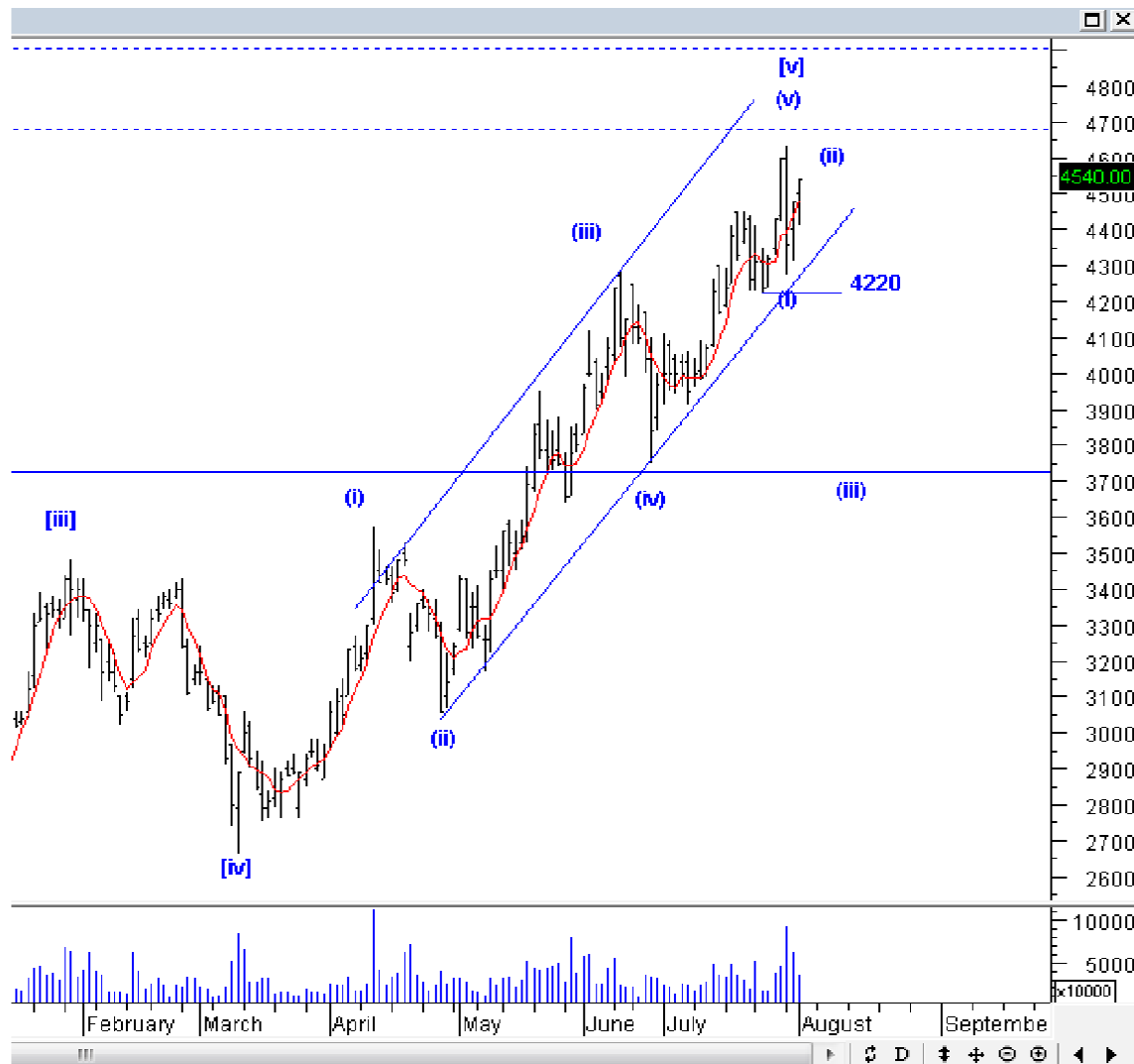
BBTN: Buy on weakness – Buy area 2440-2460; TP 2750, 2800, 3000; SL break 2330



BBTN kemarin menguat dan ditutup di level 2460, beberapa kali kami pernah rekomendasikan BBTN, Anda masih dapat melakukan penambahan posisi pada BBTN, mengingat BBTN sudah konfirm berada di wave [iii], resisten penting ada di level 2560, jika BBTN mampu break 2560, BBTN akan naik agresif dan menuju 2750-2800.

Stock Recommendation for Today

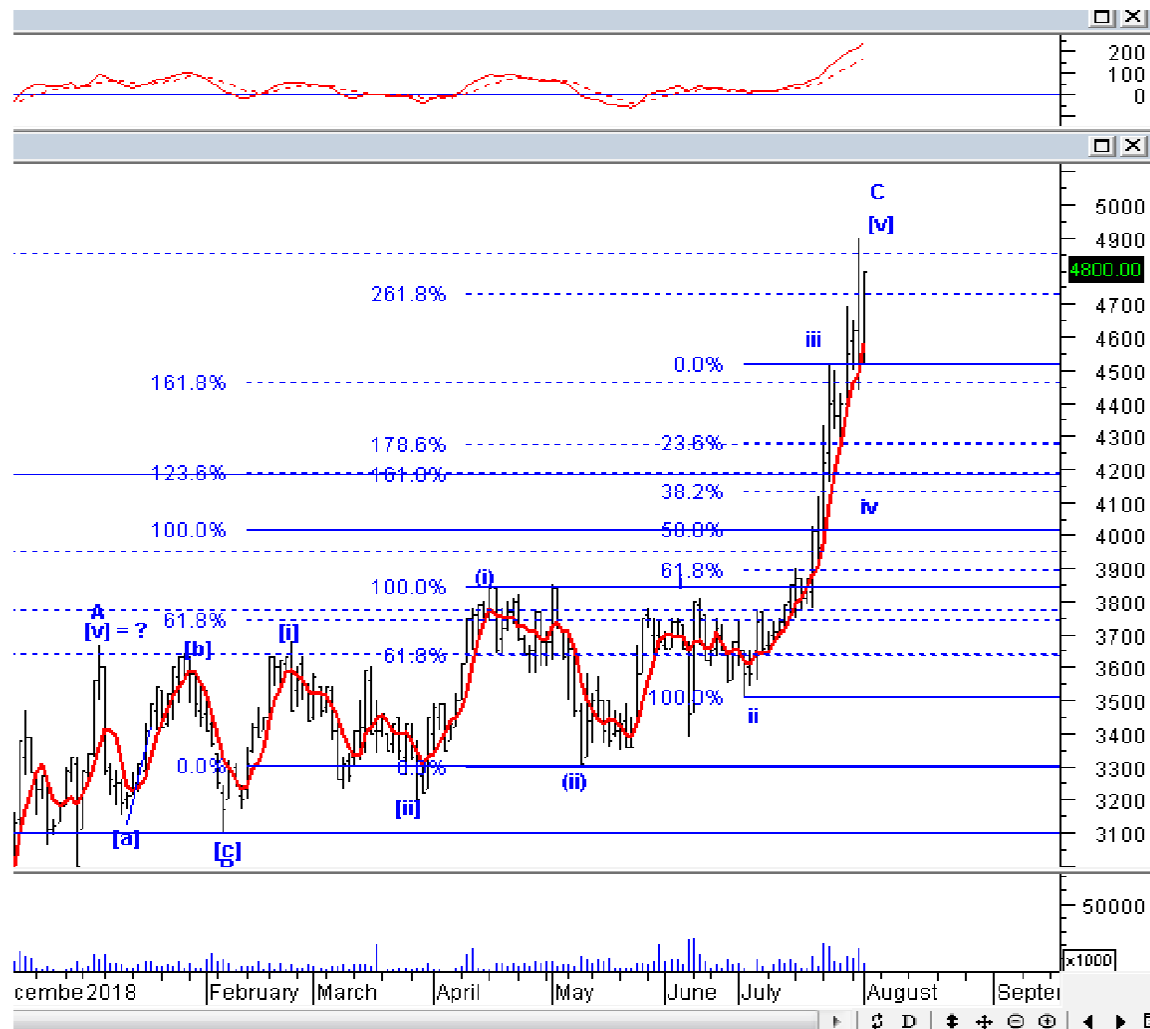
PTBA: *Sell on strength – Sell area 4550-4580; Downside target 4220, 3750*



PTBA memang kemarin menguat, tetapi tidak diikuti volume yang membesar, malah volume terus mengecil, kami melihat bahwa kenaikan ini sifatnya semu, sebagai bagian dari wave (ii). Oleh karena itu, kami tetap rekomendasikan SoS PTBA, karena PTBA rawan turun ke bawah 4220 lagi.

Stock Recommendation for Today

CPIN: *Sell on strength – Sell area 4850-4950; Downside target 4275, 4050,*



Posisi CPIN kami yakini sudah berada di akhir wave [v] dari wave C. Meskipun mungkin masih dapat menguat, tetapi CPIN rawan untuk turun agresif. Kami tetap rekomendasikan SoS dan hindari CPIN terlebih dahulu.

PT NISP Sekuritas
OCBC NISP Tower Lt. 21 (Head Office)
Jl. Prof. Dr. Satrio Kav. 25
Jakarta 12940 Indonesia
Phone. (021) 2935 2788 (hunting)
Fax. (021) 5794 4095
Email: info@nispsekuritas.com
Website: www.nispsekuritas.com

Branches	Address	Phone:	Fax:
Pluit Jakarta	Ruko Sentra Bisnis Blok C28 Jl. Pluit Sakti Raya No. 15 Jakarta Utara 14450	(021) 6667 5050 (hunting)	(021) 6667 5051

Rating Definitions

- Buy on Weakness (BoW) : We expect this stock could be bought below the last price.
Trading Buy : We expect this stock could be bought at the last price.
Sell on Strength (SoS) : We expect this stock could be sold above the last price.
Trading Sell : We expect this stock could be sold at the last price.

DISCLAIMER

This report was produced by PT NISP Sekuritas, a member of the Indonesia Stock Exchange (IDX). The Information contained in this report has been obtained from public sources believed to be reliable and the options, analysis, forecasts, projections and expectations contained in this report are based on such information and are expressions of belief only. No representation or warranty, express or implied, is made that such information or opinion is accurate, complete or verified and it should not be relied upon as such. This report is provided solely for the information of clients of PT NISP Sekuritas who has to make their own investment decisions without reliance on this report. Neither PT NISP Sekuritas nor any officer or employee of PT NISP Sekuritas accept any liability whatsoever for any direct or consequential loss arising from any use of this report or its contents. PT NISP Sekuritas may be involved in transactions contrary to any opinions herein to make markets, or have positions in the securities recommended herein. PT NISP Sekuritas may seek or will seek investment banking or other business relationships with the companies within this report. This report is a copyright of PT NISP Sekuritas. For further information please contact our number 62-21-29352788 or fax 62-21-57944095.